

S U M M E R 2 0 0 6

# LEAGUELOGS

A COMMUNITY PUBLICATION OF THE JUNIOR LEAGUE OF MONTGOMERY, INC.



**80 YEARS: A LEGACY**

I'm Italian. In style.

FACCI & POLLINI

Silk Weave Collection [www.robertocoin.com](http://www.robertocoin.com)

 **Bromberg's**  
*Alabama's Leading Jewelers Since 1836*

3150 McGehee Road • (334) 281.1595  
[brombergs.com](http://brombergs.com)

 **ROBERTO COIN**

## editor's notes



PHOTO BY ALLISON DAVIS

When I accepted the appointment as League Logs Editor for the 2005-2006 year, I was still fairly new to the League. I wasn't sure that I was the best person for the job since I didn't feel that I knew enough about the League to carry it out. What I soon discovered was that being Editor was possibly the best way for me to get to know the League, and most certainly, other members. By year's end, I have been left with a better understanding of the impact that our organization has had on the community, as well as some great new friends.

Unless you've been hiding under a rock, you know that the Junior League of Montgomery celebrated its 80th Anniversary this year, culminating in a Gala which took place on May 9th at the Capital City Club. In honor of this very special year, we searched our archives to find items to include in these issues that would reflect our history. What we found was overwhelming. Not just pictures and articles dating back to the 1920's, but files upon files of projects that had been carried out over the years. In the course of it all, I have gained a real respect for the energy and imagination of the women who came before. Women like Jean Kimball Daniel who joined JLM during WWII and is our oldest living President, and Julia Marks Dozier who was part of the first Provisional Class and President from 1941-1942 (*Everybody Was a Provisional* – p. 37). What a legacy these women, and the many others, have left us over the past 80 years!

As we welcome a new board, it's not hard to see the fruits of that legacy. The Junior League of Montgomery is stronger than ever and moving forward at a rapid rate, as evidenced by the new online Digital Cheetah service that will streamline our communications and enhance how we manage our memberships and placements (*Getting Better Connected is Going to be a Click Away* – p. 24-25).

As I close out this last issue of the year, and my last as Editor, I want to extend a hearty "thank you" to everyone who participated: the Staff, the Board, the Communications Council and Guest Writers. I have really enjoyed this time and look forward with fresh new eyes to continuing to do my part to build on the legacy.

Happy Summer!

A handwritten signature in black ink that reads "Brenda Dennis".

Brenda Dennis  
Editor



EDITOR - BRENDA DENNIS

CO-EDITOR - ALISON STRICKLER

LAYOUT EDITOR - BRENDA DENNIS

AD MANAGER - KATHY STERNENBERG

BUSINESS MANAGER - STEPHANIE HORNE

STAFF WRITERS - AMY C. BROWN, SHARON HIGGINS,

JENNIFER KORNEGAY, SUSAN MICKLER, NELL WEISENFELD

GUEST WRITERS - BETTY BOBBITT BYRNE, SUSANNAH CLEVELAND,

KRISTI GATES (NON-MEMBER), CARLA GILMORE,

ELIZABETH KENNEDY LAWLOR

CONTRIBUTING PHOTOGRAPHERS - ALLISON DAVIS,

DAVID ROBERTSON, JR.

ALABAMA DEPARTMENT OF TOURISM & TRAVEL

PRINTER - DAVIS DIRECT

### BOARD OF DIRECTORS

PRESIDENT - LAURA SELBY

PRESIDENT ELECT - BETTY BOBBITT BYRNE

RECORDING SECRETARY - SUSIE WHITE

COMMUNICATIONS COUNCIL VICE PRESIDENT -

ELIZABETH KENNEDY LAWLOR

COMMUNITY COUNCIL VICE PRESIDENT - LAURA STEVENSON

FINANCE COUNCIL VICE PRESIDENT - MONICA DILL

MEMBERSHIP COUNCIL VICE PRESIDENT - LEAH STEPHENS

NOMINATING CHAIRMAN - MITZI CHESSER

CORRESPONDING SECRETARY - JULIE GREEN

SUSTAINING ADVISOR - DEBBIE HOBBS

STRATEGIC PLANNING/ADVISORY PLANNING - ASHLEY HAMLETT

### MISSION STATEMENT

The Junior League of Montgomery, Inc. is an organization of women committed to promoting voluntarism, developing the potential of women, and to improving the community through the effective action and leadership of trained volunteers. Its purpose is exclusively educational and charitable.

The opinions expressed in this publication do not necessarily reflect those of The Junior League of Montgomery, Inc.

League Logs is published three times a year by The Junior League of Montgomery, Inc. Copyright 2006.

No reproduction is permissible in any form without written permission of the Editor, 3570 Carter Hill Road, Montgomery, AL 36111

Telephone 334-288-8816

[www.juniorleaguemontgomery.com](http://www.juniorleaguemontgomery.com)



JOHN HARDY

BATU SARI DIAMOND COLLECTION



© 2005 Diamond Champion Limited

K L E I N *&* S O N  
FINE JEWELERS SINCE 1893

Zelda Road • Montgomery, AL



# LEAGUELOGS

A Community Publication of The Junior League of Montgomery, Inc  
Volume 80 Number 3 SUMMER 2006

## 80 Years: A Legacy

### FEATURES

**Building on the Legacy** .....10-13  
By Jennifer Kornegay and Brenda Dennis

**80th Anniversary Gala** .....16-21  
By Alison Strickler, Nell Weisenfeld and Ivy Pittman

**Getting Better Connected** .....24-25  
By Elizabeth Kennedy Lawlor

**The HeART of the Matter** .....28-30  
By Amy C. Brown

**The Legacy**

**JLM Timeline** .....34-36  
    By Susan Mickler

**Everybody Was a Provisional** .....37  
    By Julia Marks Dozier

**Famous Junior League Members** .....38  
    By Brenda Dennis

### DEPARTMENTS

**Editors Notes** .....3

**President's Message** .....6

**Letter from Jean Kimball Daniel (Oldest Living President)** .....8

**League Life**

**One Team, One Dream** .....14  
    By Betty Bobbitt Byrne

**Girl Scouts Honor League Members** .....26  
    By Kristi Gates

**JLFD Donor Report** .....32

**Home Arts**

**Tips for the Season** .....40  
    By Carla Gilmore

**Summer Gardening Tips** .....41-42  
    By Amy C. Brown

**Recipes from "Southern Keepsakes"** .....43

**Top 10 Family Outings** .....44-46  
    By Jennifer Kornegay

**Provisional Report** .....47  
By Susannah Cleveland

**Provisional Profiles** .....47-50

**Index of Advertisers** .....50

**On the Cover:** The photo comes with little information and was found in the JLM Archives. According to the writing on back, it was taken about 1927 by Stanley Paulger in Montgomery, Alabama. It was donated to JLM by Phedora R. Nicrosi (President 1927-1928).

# Making a Difference



**P**eople in our community often tell me of the differences the Junior League is making in our city. It is so rewarding to know that I belong to an organization that makes a difference to people each day. Over the years, our successful fundraisers have provided a financial commitment to the Montgomery area that has totaled well over a million dollars. Our success and strength has come not just from our dollars, but from the enormous number of volunteer hours Junior League members have contributed to every project we champion. Approximately 20,000 hours of volunteer services are donated annually by our faithful members, through community placements. Proceeds raised by the Junior League of Montgomery support their work in the community through projects that improve the quality of life for families and children.

Robert Fulghum's book, *All I Ever Really Needed to Know I Learned in Kindergarten*, quotes and then remembers the book about Dick and Jane and the first word you learned, the biggest word of all: LOOK. Everything you need to know is in there somewhere; the golden rule and love and basic sanitation; ecology and politics and sane living. Think of what a better world it would be if we all--the whole world--had cookies and milk about 3 o'clock every afternoon and then lay down with our blankets for a nap. Or if we had a basic policy in our nations to always put things back where we found them and cleaned up our own messes. And it is still true; no matter how old you are, when you go out into the world, it is better to hold hands and stick together.

This excerpt from *Chicken Soup For the Soul* reminds me of our League members that stick together to reach our common goal for the community, making a difference to those less fortunate. It has been my honor and pleasure to serve as President of the Junior League and my prayer is that I have made a difference to someone this year. Thanks for "Blooming Where You Were Planted." Our garden is beautiful!

Laura Selby

Photography by the Robertsons

The Courtyard 277-2228



Emily Anne Shonk

daughter of

Mr. and Mrs. Chet Shonk



# Jean Kimball Daniel

*Dear Very Active Junior League,*

*The 80th Gala was not just a glamorous meeting, it was a revelation to many of us of the New Junior League. The size, vitality and effectiveness of your reports were overwhelming. Congratulations!*

*The old organization I remember can only claim distant kin but we were equally dedicated to the growth and enrichment of Montgomery. When I joined the League during World War II the assets were a gavel, several notebooks (kept under members' beds) and a small bank account. But we dreamed big.*

*One project I remember fondly was helping the museum board when the city gave them the use of an old school house. We were invited to meet there if we helped rehabilitate the building. This included personally painting walls.*

*The real accomplishment of the League, then as now, is the inspiring and training of members to be effective, willing civic workers. The presidents were just lucky enough to get most of the praise.*

*Best wishes to you as a group and to each one of you, use this special time to serve, have fun and make friendships. You are part of a fine tradition.*

*Blessings,*

*Jean Kimball Daniel*

*President 1957-1958*







# Building Our Future...

*At Colonial Bank, we believe in the spirit of community; being able to share our time with our neighbors.*

*Come to Colonial, where we give you the attention necessary to manage your assets and build your financial future.*

**Chantilly Corners Office**  
9120 Eastbase Parkway  
(334) 240-5515

**Colonial Financial Center**  
One Commerce St.  
(334) 240-5215

**Old Farm Office**  
2914 Carter Hill Road  
(334) 240-5303

**Perry Street Office**  
671 S. Perry St.  
(334) 833-3880

**Sturbridge Office**  
7990 Vaughn Road  
(334) 240-5220

**Taylor Crossing Office**  
7010 Atlanta Highway  
(334) 240-5200



**COLONIAL  
BANK**

[www.colonialbank.com](http://www.colonialbank.com) • Member FDIC



# Building on the Legacy

Profiles compiled by Jennifer Kornegay & Brenda Dennis  
Photography by Libby Weatherly



## BETTY BOBBITT LEE BYRNE

*President*

Betty is the President for the League for 2006-2007. She has been in the league for 10 years. Her favorite placements include chairing Teen Court and Community Research, and serving as Membership Council VP.

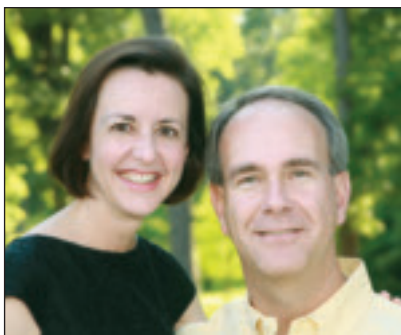
Betty practiced law for 10 years and is a graduate of Leadership Montgomery, Class XXII. She is a member of Young Meadows Presbyterian Church where she has served as President of Women in the Church, director of Vacation Bible School and taught Sunday School. Hobbies include travel, biking, tennis and reading.

She has been married to David B. Byrne, III for 13 years and has 2 children Betsy (8) and Bryson (5) who attend Trinity Presbyterian School.

## LEAH S. STEPHENS

*President-Elect*

Leah is the President Elect for the League for 2006-2007. Her hometown is Dothan, Ala. She moved to Montgomery after graduating from The University of Alabama and The University of Alabama School of Law. She and her husband Ken have been married for 15 years. Ken is originally from Grove Hill, Ala., and he works for Alfa Insurance Companies. Ken and Leah love to spend time with their families and take week-end trips to the beach as often as possible.



Leah love to spend time with their families and take week-end trips to the beach as often as possible.

She and Ken are active members of First Baptist Church where Ken teaches their couples Sunday school class and Leah teaches first grade choir.

Leah's prior League service

in the community includes tutoring at Brantwood, working on a Habitat for Humanity House build and Teen Court. She has also served as the League's Strategic/Advisory Chair, Recording Secretary, Provisional Chairman and Membership Council VP.

## CARLA C. GILMORE

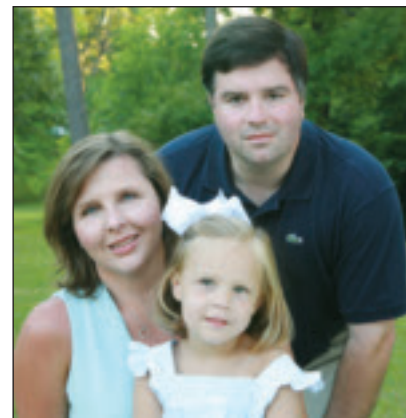
*Recording Secretary*

Carla is the Recording Secretary for the League for 2006-2007. Carla is a partner in the law firm of Kaufman & Rothfeder, P.C. She concentrates her practice in the areas of commercial litigation and employment law.

She is originally from Eufaula and graduated from The University of Alabama and The University of Alabama School of Law. Carla is married to Matt Gilmore, also originally from Eufaula. The Gilmore's have one daughter, Ellie, who is four years old.

Carla is active member of First United Methodist Church where she serves as an officer of her Sunday School class and teaches children's church.

Before serving as recording secretary of the League, Carla was the education/training chair. She has also served as the League's strategic/advisory planning chair and as the business manager for League Logs and League Lines.



## SUSAN O. MICKLER

*Communications Council VP*

Susan is the Communications Council Vice President for 2006-2007. She graduated from The University of Mississippi with BA in Marketing and has lived in Montgomery for seven years. Her husband, Rob, works



at WNCN Channel 32 as an Account Executive and co-hosts "Inside the Tide and Tigers" during the fall. Susan currently works for MetLife as the Recruiting Coordinator for the Birmingham and Montgomery offices. She and Rob have a son who is 21 months old, Randell Robert IV, "Drew".

She is also very active with the Montgomery Area Chamber of Commerce serving on the steering committee for the Ambassadors and as well with the New Member Ministry with Frazer United Methodist Church. She enjoys entertaining at home with family and loves Ole Miss sports.

Since joining the League, she has been involved with chairing and co-chairing the yearbook as well as working with League Logs as a staff writer. Recently recognized as a "Bloom Where You Are Planted" award winner as well as a "Women to Watch" for 2005.

*Continued on page 12*

This little light of mine,



I'm going to help her shine.

It's a big world. We believe in starting small giving little ones the patience and understanding that grows tender hearts and strong minds. Trinity Presbyterian School's educational program includes a balance

*1700 East Trinity Blvd., Montgomery, AL 36106*



We believe in nurturing the whole child and helping them to discover their unique talents. They are the future. We want to help light the way.

*334.277.0370 [www.trinitywildcats.com](http://www.trinitywildcats.com)*

Trinity Presbyterian School admits students of any race, color, religion, national or ethnic origins to all the rights, privileges, programs and activities generally accorded or made available to students at the school. It does not discriminate on the basis of race, color, sex, religion, national or ethnic origins in any of its educational policies, scholarship programs, athletics, or other school administered programs.

## board profiles

### ANNE MARCATO

#### *Community Council VP*

Anne is the Community Council Vice President for the League for 2006-2007. Anne is married to Mike Marcato and they have two children, Sam (5) and Fin (3). They own and operate two local contracting companies, Safety Guide of Alabama and Highway Solutions.

Anne is originally from Wetumpka. She attended Auburn University and graduated from AUM with a B.S. in Education and received a Masters degree from Nova Southeastern University in Physical Therapy. She practiced in neurological rehabilitation and pediatrics for five years before leaving to raise her children.

She is an active member of First United Methodist Church and also serves on the Advisory Board for Montgomery Education Foundation.

Before serving as Community Council VP, Anne served as Community Research chairman and Holiday Market personnel chairman. She is also currently serving on the Fundraising Ad Hoc committee.



### SHEILA BABCOCK

#### *Finance Council VP*

Sheila is the 2006-2007 Finance Council Vice President. Last year, she served as the Assistant Treasurer for the Junior League. She has also chaired the Publications Committee.

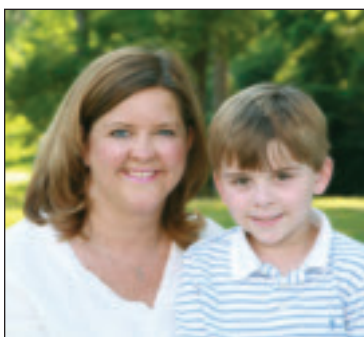
She earned a Bachelors degree in Accounting from Auburn University Montgomery.

Sheila is Director of Finance for Results, LLC, a Montgomery-based Governmental Affairs firm. She has also worked for the Business Council of Alabama, an organization representing more than 5,000 businesses in the state.

### SUSANNAH CLEVELAND

#### *Membership Council VP*

Having lived all over the world while her father served in the United States Air Force, Susannah considers both Auburn and Montgomery home. Susannah works as the Director of Admissions and Marketing at The Montgomery Academy where her seven-year-old son, Ford also attends school. A National Board



certified teacher, Susannah earned her B.A. in Political Science and her M.A. in Secondary Social Science Education from Auburn University. She also holds an Education Specialist Degree from Auburn University at Montgomery. Susannah is the former chairman of the National Kidney

Foundation of Alabama, and is a member of First United Methodist Church where she serves on the Children's Council. While in the Junior League of Montgomery, Susannah has served as a volunteer at Brantwood Children's Home, Christmas in April, Publications Chair, Education and Training Chair, Community Council Vice President, Communications Council Vice-President, and most recently as the Provisional Chairman.

### ALYCE ROBERTSON

#### *Advisory Planning/Education & Training*

Alyce Robertson is serving as on the board as the Advisory and Strategic Planning Chairman. She is also serving this year as the Chairman of Membership Education.

Last year, Alyce was the Merchant Chair for the 2005 Holiday Market. Before that, she worked two years on the Community Research Committee, which she describes as a League-changing experience in that she learned first-hand of the great need for the Junior League's financial and volunteer resources in the Montgomery area. Alyce also tutored for a year at Thelma Smiley Morris Elementary School.

Alyce is an Assistant Attorney General in the Office of Attorney General Troy King, where she practices civil litigation. She has two family members in the League — a sister, Molly and sister-in-law, Leslie. She is a member of Immanuel Presbyterian Church, where she volunteers as a youth advisor.



### LAURA STEVENSON

#### *Corresponding Secretary*

Laura has been in the Junior League for 10 years. She will serve as Corresponding Secretary for the 2006-2007 year.



She is originally from Kenilworth Ill., a suburb of Chicago. She obtained her undergraduate and Masters Degree from Spring Hill College, in Mobile. She is married to Young, and they have three children: Foy Catherine (11), Wilkie (9), and Maureen (7) who attend Montgomery Academy.

Laura has served in community placements as well as on the Community Research Committee and as the Community Council Vice President for 2005-2006. Her family attends St. John's Church where she teaches Kindergarten Sunday School.

### JODI TRAYLOR

#### *Fund Development Chair*

Jodi is the Fund Development Chair for the League for 2006-2007. Jodi is an Industrial and Systems Engineer with Big Lots, Inc. She is originally from Bay Minette and graduated from Auburn University. Jodi is married to Bryant Traylor, originally from Selma. The Traylor's have one daughter, Ella, who will be a year old in September.



Jodi is active member of First Baptist Church where she works in the nursery.

Before serving as Fund Development Chairman of the League, Jodi was the Fund Development Secretary and co-chair.

## STEPHANIE NORRELL

### *Nominating Chair*

Stephanie will be serving on the board as Nominating Chairman and has been a member of the Junior League of Montgomery since



1996. She has served on numerous in-league and community placements, including Pater-son school, fund develop-ment, strategic plan-ning and public affairs. Most recently, she served as chairman of the place-ment committee.

A native of Shelby, North Carolina, she

holds a bachelor of arts in economics from the University of North Carolina. She has held governmental affairs positions with AmSouth Bank and the Business Council of Alabama and currently works part-time as a consultant for McMillan and Associates.

She and her husband Billy have three boys – George, William and Walton. They are members of St. John's Episcopal Church, where she has served as chairman of the outreach committee and as a Sunday school and vacation bible school teacher.

## SHERI MCKEAN

### *Sustaining Advisor*

Sheri McKean will be serving on the board as Sustainer Advisor. She graduated from Auburn University. She is married to Rory McKean, owner of McKean & Associates, Architects, and they have one daughter, Landon, and one son, Rory.

Her many community involvements include: Leadership Montgomery Board member, Montgomery Area Council on Aging (MACOA) Board Member, Montgomery County Department of Human Resources Quality Assurance Committee, First Baptist Church Youth Sunday School Director and Girls' Missions' Teacher and Auburn Univers-ity's Alpha Gamma Delta Sorority Parents' Club Chairman. She is also a past president of the League, serving from 1998-1999.

Her many awards and recognition for her outstanding communi-ty service include: Girl Scout's 2005 Women of Distinction Award,



Montgomery Chapter of Daughters' of the American Revolution Outstanding Community Service Award (2003), 2000 Mathews-Alzheimer-Smith Award from Montgomery Area United Way Community Council and 2001 Sustainer of the Season for Junior League. 🏡



*"Catherine"*

*Daughter of Mr. and Mrs. Patrick Albrecht*

Photography by

# Libby Weatherly



Portraits available in

black and white,  
color, sepia & hand tinted

## 264-1258

# One Team, One Dream



*Betty Bobbitt Byrne, Leah Stephens and Laura Selby*

## THE AJLI ANNUAL CONFERENCE May 3-6, 2006, Salt Lake City, Utah

*By Betty Bobbitt Byrne*

Each year the Junior League of Montgomery sends its President, President Elect and President Elect-Elect to the annual conference of the Association of Junior Leagues International (A.J.L.I.) for training and networking. This year's conference was held in Salt Lake City, Utah which was also the host for the 2002 Winter Olympic Games. With 293 leagues in four countries being represented, attendance topped 1,000 for this year's conference where the theme was, appropriately, "One Team, One Dream".

Laura Selby, Leah Stephens and I each participated in different training tracks. Topics included "Growing Leaders Through Service", "Moving from Events to Donors" and "Presenting the League through Its Financial Statements" among others. The Junior League of Montgomery is also a member of the affinity group P.O.L.L. (Presidents of Large Leagues). We attended this session together and were able to dialogue with other leagues of similar size about relevant issues affecting both the Association and our individual leagues.

A highlight of the conference was keynote speaker and Olympic Champion Picabo Street. She was engaging and passionate as she told her story and spoke about the National Children's Alliance which provides services to over 500 Children's Advocacy Centers throughout the United States, including Child Protect in Montgomery—one of our own

partnering agencies.

In addition, we were honored to have Elizabeth Smart, who had just given her first live interview with her father on Larry King Live a few days before, serenade us with the harp. It was a truly remarkable performance.

It was an educational and informative conference and also a lot of fun. Because of our size and our history, the Junior League of Montgomery is able to give and receive when we come together with other leagues at this conference making it a truly worthwhile experience. 🏠



*2-Time U.S. Olympic Medalist Picabo Street  
poses with Betty Bobbitt Byrne*



A  
great  
bank is about  
people.

At Sterling Bank,  
we take a **personal**  
**interest** in helping clients  
realize their dreams.



**STERLING BANK**  
MEMBER FDIC

**In Montgomery**

4121 CARMICHAEL ROAD 279-7800 2005  
2655 TAYLOR ROAD 395-7272  
BAPTIST MEDICAL CENTER CAMPUS 290-7800

**In Prattville**

COBBE FORD ROAD 358-7800



*Strasburg Children®*

*...in the business of dressing Angels®*



The Shoppes at EastChase  
7056 Eastchase Pkwy. Montgomery, AL  
334-356-2730

[www.strasburgchildren.com](http://www.strasburgchildren.com)

**THE MONTGOMERY BALLET**

*Professional Company & School*

Established 1958

Priscilla Crommelin-Ball, *Executive Artistic Director*

Oskar Antunez, *Associate Artistic Director & Resident Choreographer*

**NOW REGISTERING!**

**'06 Summer Program**

*Beginning - Professional Level*

Pre-Registration Applications  
now being accepted for

**'06 Fall/Winter Program**

*FAMILY DISCOUNT AVAILABLE  
for families with more than  
one student enrolled in classes!*

Mark your Calendars!

The Thirty-First Annual

**Performance on the Green**

Friday, July 28<sup>th</sup> at 8:00pm

Blount Cultural Park



**For Information: (334) 409-0522**

6009 East Shirley Lane, Montgomery, AL 36117

[www.montgomeryballet.com](http://www.montgomeryballet.com)

If the Shoe Fits . . .

*Richardson's*  
*Pharmacy*  
*Serving Montgomery*  
*for over 40 years*



Invitations

Crane Fine Papers

Vera Bradley bags

CHRISTOPHER RADKO

Caspari Pewter

(334) 262-5775

Rx Gifts

and so much more.

1069 Woodley Road

Montgomery, AL 36106

# 80<sup>th</sup> Anniversary Gala

By Alison Strickler

**O**n May 9, 2006, the Montgomery Junior League gathered with friends and family at the Capital City Club to celebrate 80 years of volunteer work in the Montgomery community. The evening, sponsored by EastChase, was a real celebration of all that we have achieved and those whom we help. The evening was planned and executed by Gala Chairman Ivy Pittman and her great committee members including Heather Scott, Brantley Gregory, Toni Burnham, Kelly Colson, Tonya Gaston, Stephanie Brown, Christy Cronier, Nicole Mabry and Michelle Tucker.

After opening comments by JLM President Laura Selby and Chairman Ivy Pittman, the crowd was entertained by our very own League Larks who performed a series of 50's inspired love songs. Following the first of many fabulous door prizes given throughout the evening, Community Research Chair Anne Marcato presented checks to all of the recipients of our Junior League grants for the year. It was a real treat for all the League members to see how the dollars we work for are spent and the appreciation of the wonderful charities who benefit from our efforts.

The next award presented was "Sustainer of the Year" which was awarded to Cookie Knott, although she was unable to be present to receive it that evening. Membership Council Vice President Leah Stephens named the "Women to Watch" for their outstanding Leadership qualities. Each woman has worked beyond the expectations of their position and maintained a positive attitude. The honorees are Holly Bigham, Mandy Bailey, Summer Barrett, Kathy Burkett, Pamela Huntsberry, and Susan Mickler.

Next Leah Stephens honored the recipients of the Placement Awards. The Community Placement Award went to Sherri Stewart for her work at *Camp Smile-A-Mile*. The In League Placement Award went to Community Research Chair Anne Marcato and the In League Committee Placement Award went to Elizabeth Kennedy Lawlor and the Communications Council.

Susannah Cleveland was next on the evening's agenda. Susannah served as Provisional Chair this year and she recognized and inducted all of the provisional members to the status of active members. Leah Stephens also recognized all of the active members moving to sustainer status and thanked them for their years of dedicated service to the League.

President Laura Selby then came forward to thank the League for the great work they did during her year as President and passed the gavel to our President Elect Betty Bobbitt Byrne. Betty Bobbitt announced her slogan for the year of "Connect the Dots... Find Your Spot for Service in the Junior League" She said that she looked forward to a great year!

Finally, it was the time that everyone was waiting for, the announcement of the Favorite Past President. Presidents Committee Chairman Stephanie Brown and Gala Chairman Ivy Pittman came forward and recognized the service and dedication of being a League President and toasted all past presidents. The fundraiser for the event was a twenty-five dollar ticket to vote for the Favorite Past President from all past league presidents. With anticipation in the air, Ivy announced that by popular vote the winner was 1977-1978 Junior League President Winifred (Winnie) Stakely. Mrs. Stakely came to receive the honor and a very successful and wonderful evening came to a close.



Laura Selby



Ivy Pittman



Nicole Mabry, Tina Nixon, Becky Hayes



A photograph of a wine cellar. The wall is covered in a mosaic of irregular, light-colored stone tiles. Two black metal sconces with lit candles are mounted on the wall. In the foreground, a wooden table holds two wine bottles, a glass jar filled with wine corks, and three wine glasses filled with red wine. To the left, a metal wine rack is visible.

# TASTEful

Experience the Southeast's most unique collection of tile and stone.  
Schedule an appointment to have one of our representatives help make product selection simple and convenient.

**MONTGOMERY | 2940-I Zelda Road | 334.272.1600**  
**Zelda Place Shopping Center**  
**[www.claymetalandstone.com](http://www.claymetalandstone.com)**

*Clay*  
& **Metal**  
**Stone**<sup>®</sup>  
*Elevate Your Space*

ANN SACKS | ARTISTIC TILE | CASA DOLCE CASA | CROSSVILLE PORCELAIN STONE | EMIL CERAMICS  
LUNDA BAY GLASS | OCEANSIDE GLASSTILE | QUESTECH METALS  
SONOMA TILEMAKERS | STONE AND PEWTER ACCENTS | WALKER ZANGER

**Sustainer of the Year:**

The Junior League of Montgomery is proud to honor Cookie Knott as our sustainer of the year. Cookie served as an active member of the league for many years serving as Assistant Treasurer and Treasurer. She also worked through the League with AUM to develop a funding resource center. Cookie said “I believe in volunteerism. I think it is a vital part of American life, something that differentiates us from other nations.” Her belief continues today as she still actively works in the community volunteering at the Jubilee Community Center where she organized candlelight tours of Cottage Hills, and volunteered with their tax assistance program.

Placement Awards are given to those who exceed expectations during their placements and go above and beyond what is expected. This year’s recipient’s certainly meet that criteria.

**Community Placement Award**

Sherri Stewart received this award for her work at Camp Smile-A-Mile. Sherri is truly a dedicated League member. In addition to serving as Chair for the Camp Sam Placement, she also serves on the Community Research Committee and League Larks. However, it’s Sherri’s passion and dedication to Camp Sam that influenced all those involved to award her the honor of the Community Placement Award for this year.

**In League Placement Award**

Anne Marcato is a Junior League superstar! Her dedication and willingness to take on challenging tasks is never-ending. This year Anne served as Chairman of Community Research Committee, Holiday Market Personnel Chair, and served on the Fundraising Ad Hoc Committee. That is three full time In-League placements. It is exhausting just to think about!

**In League Committee Placement Award**

This award went to Elizabeth Lawlor and her Communications Council Committee. Elizabeth worked tirelessly this year with Public Relations efforts working to put the League in a more noticeable place in the community. Under her leadership her committee developed a series of Public Service Announcements and did incredible work on plans for upgrading the website. The Communications Committee members are Heather Sellers, Elise Hixon, Susan Mickler, Nicole Mabry, Mary Catherine Phillips, Summer Barrett, Brenda Dennis, Kelli Gant and Ashley Barganier.

**League Logs Recognition**

During the Gala, League Logs Editor Brenda Dennis presented a special award to Carolyn Gilbert of Davis Direct. Carolyn has been assisting with the design and printing of League Logs for 40 years. Thanks for all you do, Carolyn!

**8 0 T H     A N N I V E R S A R Y     G A L A     D O N O R S**

Abigail Nicholson Lowery  
 Alecia Bozeman  
 Alicia B. Robertson  
 Alyce Robertson  
 Amy & Steve Rutledge  
 Amy Connally  
 Andra Graydon  
 Angela Hurst  
 Anita B. Hardigree  
 Ann Oliver  
 Anna Cole Adams  
 Anna Root Wamsted  
 Anne B. Upchurch  
 Anne C. Norman  
 Anne Collet  
 (Your B.A.C.K. Friend)  
 Anne D. Palmer  
 Anne Hamner  
 Anne Marcato  
 Ashley Hamlett  
 Ashley Owen - Charleston House  
 Barbara W. Larson  
 Betty S. Meriwether  
 Billie Claire Mangum  
 Bonnie Shanahan  
 Brandy Rhodes  
 Brantley Gregory  
 Brenda Dennis  
 Carma W. Marks  
 Carmen Stegall

Carrie and Spears Rhodes  
 Charlene Holtsford  
 Charles A. Stakely  
 Charlotte K. Carey  
 Cindy Bishop  
 (Your B.A.C.K. Friend)  
 Corrie Willbanks  
 Courtney Albrecht  
 Cynthia & M. Clark Sahlie  
 Daisy Emmet Bear  
 Dell Hughes Saunders  
 Donna Knox  
 Dr. & Mrs. Stehen Davidson  
 Dr. Michelle Goodwyn  
 E.A. Thompson  
 Eleanor Clements Kohn  
 Elizabeth F. Acker  
 Elizabeth M. Barrington  
 Elizabeth Segrest  
 Elizabeth Smith  
 Elizabeth T. Emmet  
 Ethel W. Barnes  
 George Goodwyn, Jr.  
 Ginny Cumbus  
 Glenda Allred  
 Gus Clements  
 Heather & Chris McInnish  
 Heather Sellers  
 Helen Crump Wells  
 Hilda S. Brown  
 Holley C. Knowles

Holly & Jason Bigham  
 Isabel B. Barnes  
 Jan & Bill Hodgson  
 Jana A. Edmundson  
 Jane N. McFadden  
 Jane W. McConnell  
 Jean K. Daniel  
 Jennifer Fruin  
 Jennifer McDavid  
 Jill Wells  
 Jodi Nelson  
 Joy M. Howard  
 Judy & Perry Hooper  
 Julia Azar  
 Julie & Lanny Crane  
 Julie Green  
 Kaky Butler  
 Kam Patton  
 Karen Bear  
 Karen Vinson  
 Katherine A. Jackson  
 Katherine C. Peel  
 Kathy Burkett  
 Kathy Mahaney  
 Kay James  
 (Your B.A.C.K. Friend)  
 Kelly P. Colson  
 Kimberly G. Taylor  
 Larry Vinson  
 Laura M. Betts  
 Laura Stevenson  
 Leah Slawson  
 Lee Hayes  
 Leigh B. Brookhyser

Leigh Moorer Jones  
 Leigh Winslett  
 Linda Arrighi  
 Linda H. Hutchinson  
 Lisa C. Stephens  
 Lisa M. Farmer  
 Lt. Col. & Mrs. Jimmie N. Varnado  
 Marcia & Clinton Berry  
 Margaret Grant  
 Marilyn R. Taylor  
 Martha & Jeff Kirkland  
 Martha Demere on behalf of  
 The Children’s Museum of Alabama  
 Martha Kirkin Byrne  
 Marti Rice  
 Maureen & Don Brown  
 McKean & Associates,  
 Architects, LLC  
 Melissa C. George  
 Michelle Tucker  
 Minnie R. Gill  
 Misha Y. Mullins  
 Miss Anna Kate Lindsey  
 Mitzi Chesser  
 Molly Robertson  
 Monica Allen  
 Montgomery Advertiser  
 Montgomery Cancer Center  
 Mr. & Mrs. Chace Warmington

Mr. & Mrs. Charles Milner  
 Mr. & Mrs. David B. Byrne, III  
 Mr. & Mrs. Douglas Ingram  
 Mr. & Mrs. Frank Stakely  
 Mr. & Mrs. George B. Clements  
 Mr. & Mrs. I.R. Long, Jr.  
 Mr. & Mrs. Lewis Gayden, III  
 Mr. & Mrs. Mike Heartsill  
 Mr. & Mrs. Robert Sasser  
 Mr. & Mrs. Sean Strickler  
 Mr. & Mrs. Terry L. Sharp  
 Mr. & Mrs. Thomas T. Gallion  
 Mr. & Mrs. Tommy Andreades  
 Mr. & Mrs. Will Marks  
 Mr. & Mrs. Will Meachan  
 Mr. and Mrs. Adams F. Hudson  
 Mr. and Mrs. Jack Terry  
 Mr. and Mrs. William D. Dill  
 Mr. Bill Marks  
 Mr. Jennings M. Byrd  
 Mr. Mabry S. Phillips, jr.  
 Mr. Richard L. Kohn  
 Mr. Robert E. Sasser  
 Mrs. Carrie Williams  
 Mrs. Elizabeth N. Robinson  
 Mrs. Gloria D. Rawlings  
 Mrs. J. Wallace Tidmore  
 Mrs. Robert B. Kohn  
 Mrs. Warren H. Goodwyn  
 Nancy L. Seale

Nicole, Holland, & Clyde Mabry  
 Pam Swan  
 Patti Powell Burke  
 Paulette B. Thompson  
 Penelope Poitevint  
 Rebecca S. Bryan  
 Rep. David Grimes  
 Ressurrection Catholic Missions  
 Rhodes Condstuction  
 Rosalind Toles  
 Ruby P. Smith  
 Sara Cousins Sellers  
 Sara Elizabeth Burnham  
 Sara L. Wilder  
 Shawna M. Atwood  
 Sherri Ward Stewart  
 Sunny Swinhart Kalisky  
 Susan R. Patton  
 Susannah Cleveland  
 Tara Lanier  
 Terri & Mac Barnes; Buddy, Martin & Preston Barnes  
 The Gordy Mead Britton Foundation  
 Vickie Link Wilson  
 Victoria A. Wells  
 Virginia Mazyck  
 Vivian R. Barfoot  
 Wendy Anzalone  
 Winifred L. Stakely



*Women to Watch: Summer Barrett, Kathy Burkett, Holly Bigham, Mandy Wright Bailey, Susan Mickler*



*Placement Awards: Alice Maples, Charlotte Carey, Anne Marcato, Sherri Stewart, Tina Nixon*



*Kay Jones, David Byrne, Betty Bobbitt Byrne, Cindy Bishop*



*In League Placement Award: The Communications Council: Summer Barrett, Susan Mickler, Brenda Dennis, Elizabeth Kennedy Lawlor, Nicole Mabry, Heather Sellers*



*Past Presidents: bottom (l-r): Karen Vinson, Ethel Barnes, Jean Kimball Daniel, Charlene Holtsford. Top (l-r): Winnie Stakely, Sheri McKean, Anne Upchurch, Susan Patton, Laura Selby, Cindy Smith, Jan Hodgson, Burke Chambers*



*Past President with the most donations: Winnie Stakely*



*Brenda Dennis presents an award for 40 Years of working with League Logs to Carolyn Gilbert*



*Anne Upchurch and Winnie Stakely*



*Sustainer of the Year: Cookie Knott*

# Junior League Gala ...another view

By Nell Weisenfeld

This year the Junior League of Montgomery is celebrating its 80th Anniversary of giving back to the community. To celebrate, JLM hosted its 80th Anniversary Gala at the Capitol City Club on Tuesday, May 9th. Members invited their spouses, families and friends to attend the free reception on the terrace level of the Capital City club in the main Ballroom to help raise money for our community causes and to honor all past and present members of The Junior League of Montgomery.

Even though the weather outside was dark and stormy, the mood inside was light and festive. The League Larks had everyone in a great mood by singing fun love songs. Elvis was in the building singing with the League Larks and Sherry Stewart made sure the guests were having fun by dancing with many of them.

Doorprizes were in abundance and many of the gift certificates and prizes were from The Shoppes at Eastchase, the Grand Sponsor of our 80th Anniversary Gala. A representative from the new owners of EastChase was on hand to say a few words and thank the Junior League for everything we do.

The Gala was held in lieu of the General Membership meeting and Sustainer Tea so there was still some business to attend to amongst all the fun. Community Placement presented community grants to our funded community placements, our Women to Watch were named, provisionals and new sustainers were honored and Mitzi Chesser announced that Cookie Knott was Sustainer of the Year. All Past Presidents in attendance were given corsages and honored for their past involvement in the Junior League. The highlight of the evening came when Past President Winnie Stakely was named favorite Past-President of the Gala for having received the most donations in her name. In all, more than \$10,000 was raised to honor the Presidents of the Gala which the Junior League will be able to put back into the community.

The final order of business for the evening was the Passing of the Gavel. Laura Selby, our 2005-2006 President, passed the gavel to Betty Bobbitt Byrne. In addition to handing Betty Bobbitt the gavel, Laura also gave her a bit of advice on the qualities she will need to successfully be President of the Junior League. To show the Leagues appreciation for Laura's hard work,

Betty Bobbitt presented her with a beautiful silver tea pitcher. Betty Bobbitt gave a short speech and attributed her dedication to volunteerism to her parents, and the influence they have had on her by their active roles as community volunteers.

As the Junior League of Montgomery celebrates our past, we can also look forward to a bright future. The combination of dedicated members and strong leadership helps make our organization successful and a valuable asset to our community. Congratulations to The Junior League of Montgomery on our 80th Anniversary.



League Larks

A woman with wavy brown hair is the central figure, wearing a vibrant lime green long-sleeved button-down shirt with ruffles down the front and rolled-up sleeves. She is also wearing a white top underneath and dark brown pants. Her accessories include a necklace with white, black, and brown beads, and several bracelets on her right wrist. She is leaning against a light-colored wooden post. The background is a rustic interior with a thatched roof and wooden beams, bathed in warm, golden light.

so perfectly put together

**HAROLD'S**

the shoppes at eastchase, montgomery ■ 1.800.676.5373 for a catalog ■ order online and find additional summer outfit ideas at [harolds.com](http://harolds.com)

*T*hanks to all who came. I want to especially express my appreciation to my committee for all of their hard work! Thanks also goes to The Shoppes at EastChase for sponsoring the evening.

*It was wonderful to visit with past presidents, Sustainers, Actives and new members, who came to celebrate 80 years of Junior League community commitment. The League Larks entertained us, as always. Awards were handed out, checks were passed out to the community grant beneficiaries and the gavel was passed. To top off the evening we raised \$11,590.00 in honor or in memory of past JLM presidents. A big thank you goes to all who donated.*

*It is such an honor to be part of such a great organization, The Junior League of Montgomery!*

*Thanks so much,*

*Ivy Pittman,*

*80th Anniversary Gala Chairman*

# The 80th Anniversary Gala WAS A HIT!

## GALA COMMITTEE

Chairman	<i>Ivy Pittman</i>
Secretary	<i>Heather Scott</i>
Treasurer	<i>Brantley Gregory</i>
Decorations	<i>Toni Burnham</i>
Door Prizes	<i>Kelly Colson</i>
Personnel	<i>Tonya Gaston</i>
Presidents	<i>Stephanie Brown</i>
Publications	<i>Christy Cronier</i>
Publicity	<i>Nicole Mabry</i>
Sustainers	<i>Michelle Tucker</i>

*A special thank you to the Montgomery Advertiser for sponsoring the Sweets Table and Gala Photographer David Robertson, Jr. of Robertson Photography, Inc. for his generosity.*

*Special Thanks to all of our Gala Door Prize Donors*

<i>Barb's Gifts</i>	<i>The Paper Store</i>
<i>Jalapenos Mexican Restaurant</i>	<i>Doug's 2 Salon-Spa</i>
<i>Benjamin and Company</i>	<i>The Shoppes at EastChase</i>
<i>Derk's Filet &amp; Vine</i>	<i>El Rey Burrito Lounge</i>
<i>Lee Ann's Interiors</i>	<i>Richardson's Pharmacy</i>
<i>BoneFish Grill</i>	<i>Ed Price Floral Creations</i>
<i>Lillies of the Field</i>	<i>Rosemont Gardens</i>
<i>Capitol Filmworks, Inc</i>	<i>Fronduti's</i>
<i>Little Mountain Growers</i>	<i>Steaks DeVine</i>
<i>MAC Sporting Goods</i>	<i>Garrett's</i>
<i>Dillard's</i>	<i>Storkland/Name Dropper</i>
<i>Nobles/The Olive Room</i>	<i>Zoe's Kitchen</i>
<i>Down The Street</i>	

# Voted #1

According to the Montgomery Advertiser Readers' Choice Awards 2005



- ♦ Carpet & Upholstery Cleaning
- ♦ Tile Cleaning
- ♦ Oriental & Area Rugs (Pick-up, Delivery & Repairs)
- ♦ Nation's First IICRC Certified Rug Technicians
- ♦ Water Extraction
- ♦ Free Estimates
- ♦ Commercial Janitorial Services
- ♦ Cleanfax™ Magazine's 2005 National Industry Leaders Review Top 10 Listing
- ♦ Chamber of Commerce COSBE Small Business of the Year



## Peaches'n Clean

POWERFUL CARPET CLEANING

CALL TODAY!  
277-6937



www.peachesnclean.com

1-866-83POWER (76937)

840 LAGOON BUSINESS LOOP



Climate-Controlled  
Oriental Rug  
Cleaning Plant

## No matter where success might take you, it begins with confidence.

Everyone has different goals, different hopes for the future. But no matter which path leads you to success, they all start in the same place: confidence. And with Regions Morgan Keegan Private Banking, you have all the confidence of knowing we'll always go the extra mile to help you achieve your financial goals. Whether it's financing next year's vacation, your children's college education or a new business opportunity. Learn more at [www.regions.com](http://www.regions.com) or call:

Barry Prim | 334-832-8818

Diane McLaney | 334-832-8522

Karen South | 334-832-8218

Lewis Gayden | 334-832-8308

Millie Houston | 334-832-8206

Sherry Lobue DeBuzna | 334-832-8043



Everyday confidence.

REGIONS  MORGAN KEEGAN™  
PRIVATE BANKING

 © 2006 Regions Bank. Member FDIC. Investment services are provided through Morgan Keegan & Company, Inc., a subsidiary of Regions Financial Corporation and a member NYSE and SIPC. Trust services are provided through Regions Morgan Keegan Trust, a trade name for the Trust Division of Regions Bank. Securities sold through Morgan Keegan and Regions Morgan Keegan Trust are not FDIC-insured, not guaranteed by Regions Bank and may lose value.



# Getting Better Connected is Going to be a **CLICK** Away!

By Elizabeth Kennedy Lawlor

**Y**ou will see a new side – a more connected side – of the Junior League of Montgomery this September. A more accessible, flexible and informational JLM office is coming to your house soon!

## HOW?

We are launching a new virtual online office this fall. What is now the JLM website will become a one-stop-shop for every member to check on future events, update contact information, confirm obligation status, and pay dues. With the click of a computer mouse. It will be able to access a member-interactive-open 24/7-Junior League- website that will change how the JLM communicates with you.

This past Spring, the JLM signed on with Digital Cheetah, a nationally-known web products company, to upgrade and expand our website and communication tools. Our initial goal was to establish a user-friendlier website that offered more member services and allowed easier updating. We found a product, offered by Digital Cheetah, that will do so much more that it is likely to change how the JLM communicates and operates!

## DIGITAL CHEETAH – CONNECTING TECHNOLOGY

Founded in August 2001, Digital Cheetah works with companies and non-profits to build complete web and database solutions that are easy to maintain, highly functional, and affordable. They boast a technology team that has over twenty years of systems development experience and over ten years of high-end Web development experience.

For the Junior League of Montgomery, Digital Cheetah will provide us with a highly customized website that will be fast, functional and user friendly. The public site will be inviting and informative with events, pictures, and membership information.

The password-protected “Members Only” section will offer an overwhelming number of membership options and services that can be accessed anytime of the day or night.

## MEMBERS ONLY – CONNECTING PEOPLE AND PLACES

Have you ever tried to look up a JLM member in our Yearbook only to find their phone number changed or the e-mail address out of date? Have you ever moved and forgotten to let the JLM office know, thus not getting your dues-renewal letter on time? Have you ever needed to change your shift time for Holiday Market? Have you ever wanted to contact everyone on your placement committee, but didn’t know who all was serving on it? Have you ever been out of town or sick during Placement Days? Have you ever thought you had enough meeting credits, but found out in May that you didn’t?

If you answered yes to any of these questions, the “Members’ Only” section of our new website will make a difference for you. The virtual office will allow you to:

- Pay dues, make donations, and purchase Holiday Market tickets.
- Instantly update personal information such as name, address, phone numbers and e-mail addresses.
- Quickly search the membership database by a member’s name, placement, committee, or by other means, for other individual members or groups of members.
- Check obligations status for meeting credits, dues renewal, membership standing, Holiday Market ticket purchases and Rummage Sale donations (ways and means requirements), placement fulfillment and other membership obligations.
- Easily register for placements.
- Sign-up for Holiday Market Committees and shifts.
- Sign-up for Rummage Sale Committees and shifts.
- View a comprehensive event calendar that includes JLM events as well as all JLM board, council, membership, committee, placement and provisional meetings.

- Send e-mail to other members – individually or to a committee or group.

These options will be available to you anytime you need to use them. And this is just scratching the surface of the possibilities! *The more you use the tools on the website, the more informed and active you will be!*

## BUILDING THE FUTURE – CONNECTING PROCESS AND PROCEDURE

Of course, building a new website and virtual office doesn’t happen overnight. It has been a year-long effort that began with the Communications Council researching our Internet options over the past year. By working closely with the Board of Directors, a good, flexible product was chosen that can grow as the JLM grows and can adapt to our changing goals.

With the Board’s approval last spring, Digital Cheetah began working with the JLM to map out a timeline and plan for designing and implementing our new site. Over the summer, representatives from Digital Cheetah met with Board members and various committee and placement chairs to learn about our League’s processes and procedures so a very tailored site could be developed.

## INFORMATION – CONNECTING WITH JLM

The information and resources that will be offered on our new virtual office will only be as great as you make it. Accuracy and simplification are key components to the website’s success. Once the new site is rolled out and operating, you may get online and update your personal information anytime you need to. There will be new data items that have only been kept in a file. Information such as your profession and where you are employed will enhance the database search options for members and can be used as a means for connecting members more on their commonalities.



On the administrative side, your obligation information will also be more accurate and much easier to track. Each member's attendance at membership meetings and events will become computerized with bar codes and scanners to track your participation. This simple means of ensuring you get credit for everything you do will cut down dramatically on missed events and obligations errors. Review your information often, it will become our primary means for contacting you.

### THE ROLLOUT – CONNECTING VOLUNTEERS AND COMMUNITY


The target rollout is scheduled for our first 2006-2007 General Membership meeting in September. We anticipate publicizing our new online resource to the public as a gateway to our volunteer efforts in the Montgomery Com-munity. Men, women, businesses and organizations will get a much clearer picture of the JLM's mission and achievements. Ultimately, our visibility will increase and our support will, too.

As for our community supporters, our new virtual office will improve our ability to document contributors to the JLM – those who give financial support and those who offer in kind services and item donations. With the fund development tracking tool, we will not only be able to cultivate our fundraising targets more precisely, we will also eliminate multiple committees asking the same contributors for help without everyone's knowledge.

As for our team of volunteers, we look forward to expanding our members' knowledge and involvement in the JLM through the "Members Only" features. Getting connected and feeling connected is key to recruiting and retaining members and sustainers in the League. Our new website will link members better and link the community more efficiently.

### THE FUTURE – CONNECTING DOTS

The Junior League of Montgomery has hit numerous milestones in the past few years: expanding our provisional classes, increasing member retention and improving our membership flexibility. The zenith of our achievements has been completing our very first Signature Project: *Discovery Village Playscape* in Old Alabama Town. Now, we are reaching a new height that will make its mark for years to come.

Our bold step into the world of 21st century technology has the potential to revolutionize our Junior League. Please take advantage of our new technology and use these tools in everyday. The more you use it, the better it will be! 



# Two Junior League leaders honored by Girl Scouts

By Kristi Gates  
Communications Manager  
Girl Scouts of South Central Alabama, Inc.



This year's Distinctive Divas: A Celebration of Our Women of Distinction hosted by Girl Scouts of South Central Alabama, Inc. saw two Junior League of Montgomery members honored. Debbie Hobbs and Lee Sellers were feted at the event, held in March at the RSA Activity Center, for their positive impact on the community. This year's recipients, which also included Mary Briers, Paulette Moncrief, Judge Tracy McCooley and Girl Scout Volunteer of the Year Debbie Kasper, were nominated by their peers and chosen by a panel of former honorees. Former Women of Distinction also presented the awards to the ladies throughout the night, while a live auction was also held to raise money for the Girl Scout council.

Girl Scouts of South Central Alabama, Inc. has hosted this event annually since 1995 to recognize women who dedicate their time and talents to make an impact on their community, profession and family. Barbara Gilewicz, CEO, said, "It is important for us to honor women that will serve as role models for our members today, and provide them with examples of what can be accomplished if they are willing to be of service to their communities." 🏆



WE BUILT COTTAGES,  
PENTHOUSES AND A CLUBHOUSE.  
MOST IMPORTANT IS WHAT WE DIDN'T BUILD.



Some like to kick back on the porch. Others prefer sky-high views. Everyone wants room to breathe. So we preserved a seemingly endless stretch of dunes. Answered the big beach sky with a grassy village square. In these uncrowded spaces, only memories will be built.

[www.relaxingbeaches.com](http://www.relaxingbeaches.com) - 888.496.2160

*The Beach Club*  
GULF SHORES  
*What can we undo for you?*

*You can always recognize a future Dixie electrician.*

*A baby who loves booties just might grow up to be a Dixie electrician. You see, our electricians wear booties every day. Every time they enter a home. It's our way of keeping the carpets clean. And keeping our customers very, very happy.*

*So the next time you have an electrical problem, call Dixie. We'll be there with booties on.*

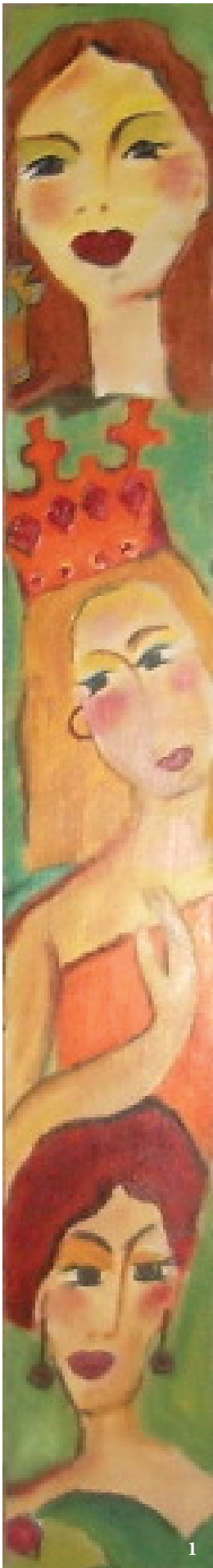
Light fixtures | Ceiling fans | Landscape lighting | Security lights  
New wiring systems | Same-day service | On call 24 hours a day  
Outfitted with state-of-the-art diagnostics and huge parts inventory  
Fair prices | Up-front pricing | 100% satisfaction guarantee

*Call Dixie, and it's done.*



 **DIXIE**  
electric co.  
Trusted electricians since 1988

262-2946 | Call 24 hours a day | 7 days a week  
Make an appointment online at [www.dixieelectricco.com](http://www.dixieelectricco.com)



## Holiday Market Sustainer Art Booth:

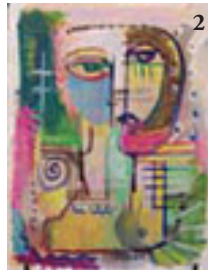
# The **HeART** of the Matter

By Amy C. Brown

*"Every artist dips his brush in his own soul, and paints his own nature into his pictures."*

—Henry Ward Beecher

The great thing about art is that it can be appreciated by anyone and everyone. One doesn't need any special knowledge to appreciate art. Art can comfort and excite and also can be a powerful motivator in behavior, thought, and beliefs. Art, through entertainment, is an educator. Since education is one of the core values of the Junior League of Montgomery, the League sponsors The Sustainer Art Booth at the Holiday Market. The Sustainer Art Booth features the work of local artists while at the same time raises much needed funds to continue the mission of the League, which is to serve the Montgomery Community. The Sustainer Art Booth adds a splash of interest and originality to the Market.



I do not claim to be an art expert nor an art critic but I can say I am a huge admirer and advocate of art's influence on one's well-being. The first time I can remember art striking a chord with me was when I was a senior in high school. I visited a friend who was babysitting at a neighbor's house. The walls were covered with boldly fanciful and vibrant child-like paintings. I felt so awake and energized and comforted by their presence. It was indeed a happy place. I asked my friend about the paintings and she told me that a local artist, Mose Tolliver, better known as Mose T, painted them. That was 1990. I've been hooked on art ever since. It was as if the world of color and expression through painting was introduced to me on that day.

Once I was introduced to Mose T's paintings my eyes were opened to all art around me, folk art in particular. I have since admired Annie T, Jimmy Sudduth, Mary Proctor, Howard Finster, Lee Harris (the

Renaissance Man), Woodie Long and R.A. Miller's work.

It was through my volunteering with the Junior League's Sustainer Art Booth, however, that I became acquainted with the overwhelming talent of local artists that we so fortunately have in Montgomery.



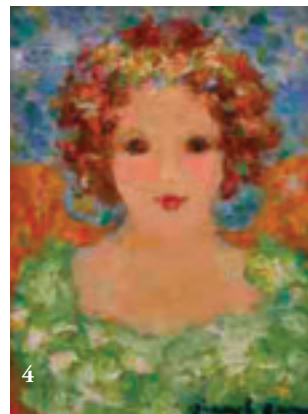
There is nothing like the spiritual connectedness I feel when gazing upon one of Camilla Armstrong's compassionate angelic faces or her simplistic yet emotional depictions of nature. Her ability to reinvent her spirituality in her work provokes great anticipation in viewing.

I am also in love with Deb Watson's fun and sassy feminine paintings sprinkled with bold and slightly masculine colors. Behind all her paintings I feel the inspiring presence of a strong woman.

I also deeply admire the work of Barbara Gallagher. Her combinations of color and pattern and expression convey magical realism to me. Her drive to overcome personal obstacles is an inspiration that is ever present in her bold display of artistic talent.

Barb Grimes work varies from the playful and fun to the highly detailed and dramatic. Her artistic talent suits a wide range of audience, from a child's fancy to the mature sophisticate.

Another one of our local artists is Clark Walker. I am always comforted and relaxed by the color schemes that Clark brings to life through his use of subtle brush



strokes. Upon closer view, the dreamy cohesive images Clark creates ironically consist of intricate details. Clark's combination of subtle and intricate evokes powerful response.

GinnyLu Greene paints entirely in oil and

*Continued on page 30*

# ALL ABOUT THE LEAGUE

## VISION STATEMENT

*The Junior League of Montgomery (the "League") is committed to strengthening families in our community by identifying and participating in programs that promote parenting skills, positive development and education of all children and youth—including those who face special physical and/or mental challenges and support of the elderly and the medically under-served.*

## COMMUNITY PLACEMENTS

Camp Sunshine  
College and Career Night  
Community Sampler  
Family Sunshine Center/  
Exodus Project  
Janice Capilouto Center  
for the Deaf  
League Larks

## IN-LEAGUE PLACEMENTS

Advisory Planning	League Lines
Arrangements	League Logs
Bulk Mail	Placement
Community Research	Provisional
Education Training	Public Relations/Publicity
Fund Development	Publications
Fund Raising Ad Hoc	Sunshine Committee
League Headquarters	Technology

## DID YOU KNOW?

The Junior League of Montgomery is a non-profit organization of trained women volunteers.

We are women committed to making a difference in our community.

We are women from different backgrounds sharing the common goal of strengthening families.

# A L L I N S P I R I N G !



*“Challenging the mind,  
nurturing Christian faith”*



Holy Cross Episcopal School • 4400 Bell Road • Montgomery, AL 36116  
(334) 395-8222 • [www.hcesal.com](http://www.hcesal.com) • [HCES@hcesal.com](mailto:HCES@hcesal.com)

*Holy Cross Episcopal School admits students of any race, color, religion, and national or ethnic origin.*

PRE-K THROUGH  
6TH GRADE

5



# The **HeART** of the Matter

her image creations, whether abstract or figurative, magically come together in thoughtful brush strokes. Her paintings of children capture the heart like none other.

Diddy Vucovich's angelic figures have always been highly sought after by the art booth customers. Diddy's talent is unlimited in its ability to move and inspire.

Mandy Bagwell's pottery is hip, bold, and whimsical, while imaginatively versatile. Mandy's paintings are just as fun and fanciful.

Craig Green has been one of the booth's newer artists. His abstractly real figures are entertainingly perplexing. They are constructed of bold colors and emotional imagery.

This year marks the eighth year of the Sustainer Art Booth and I am thrilled with the honor of chairing this booth this year. I invite you to consider choosing a selection of art to decorate your house, as a gift for Christmas, or to commemorate a birth, a birthday, an anniversary, promotion, or any special occasion. What could be a more original gift than a one of a kind piece of art? Not only will the recipient be appreciative of your creativity in gift selection but you will also be helping the community with your purchase. We invite you to visit our booth and enjoy the works of our familiar and newly found favorite local artists. Please visit us and let us entertain you for a while. Support the arts! 🏠



6

7



8



9



12



11



10

Annie T.

- 1. Deb Watson
- 2. Craig Green
- 3. Diddy Vucovich
- 4. GinnyLu Greene
- 5. Clark Walker
- 6. Camilla Armstrong
- 7. Barb Grimes
- 8. Barbara Gallagher
- 9. Barb Grimes
- 10. Annie Tolliver
- 11. Mandy Bagwell
- 12. Camilla Armstrong



### THE LOCKER ROOM

Montgomery's finest men's clothier for over 25 years

1717 CARTER HILL ROAD MONTGOMERY 262.1788

M O N - S A T 9 A M - 6 P M

[www.TLRClothiers.com](http://www.TLRClothiers.com)



Life is an Adventure.  
Dress Appropriately.



Festival Plaza, Vaughn Road, Mon-Sat 10a-6p, 420.8576, [tlroutdoors.com](http://tlroutdoors.com)



*"The only reason I got back home after seven months is because the people at Montgomery Veterinary recognized me."*

(a true story)

*"I strayed from my house and was lost for seven months. But a nice lady found me and took me to her vet, Montgomery Veterinary Associates. I'd lost my collar, but the people there recognized me and called my Mom. Now I'm home. Where I belong." Maude McQueen*

We're not an animal shelter, but we do know our clients and their pets. You see, we consider both part of our family. And take care of them accordingly, whether for routine pet care, state-of-the-art treatment, boarding or grooming.

We have two locations to serve you. Our Carter Hill

location has been open since 1960, and the Vaughn Road location since 2004.

So if you're looking for a veterinary practice, come to a place where your pet will be treated with competence, gentleness and respect. And where, after a short while, we'll probably recognize both of you on sight.



DR. J. WESLEY R. DUNN • DR. CHARLES T. MCLEMORE  
DR. RACHAEL E. WILLIFORD • DR. CADE ARMSTRONG

2039 CARTER HILL ROAD • 269.2508 8401 VAUGHN ROAD • 271.1003

# 2006 JLFD DONOR REPORT

## GRAND INVESTOR – \$10,000

Regions Bank

## GRAND BENEFACTOR – \$5,000

Publix Super Markets Charities

## BENEFACTOR – \$3,500

Aronov Realty

Blue Cross Blue Shield of Alabama

McConnell Imports

## GRAND PATRON – \$1,250-\$1,000

Harold's

The Shoppes at EastChase

Sterling Bank

Fine, Geddie & Associates

Alabama Farmers Federation

Alabama Power Foundation

Compass Bank

Harmon, Dennis & Bradshaw, Inc.

Judge and Mrs. Truman M. Hobbs, Jr.

Met Life Foundation

## PATRON – \$500

Pickwick Antiques, Inc.

Jack Ingram Motors, Inc.

Alagasco

AmSouth Bank

Bank Trust

Group Management Services

Jackson Thornton & Co., P.C.

Loeb and Company

Morgan Keegan & Co., Inc.

Morgan Stanley

Standard Roofing

Summit America, LLC

Sylvest Farms, Inc.

Wilson, Price, Barranco, Blankenship

## SPONSOR – \$250

Alabama Emergency Room

Administration

Anchor Mortgage Services, Inc.

Anzalone Liszt Research

Blount Parrish and Company, Inc.

Derk's Filet & Vine

Fastening Solutions, Inc.

Goodwyn, Mills & Cawood, Inc.

Merrill Lynch

Montgomery Family Medicine

Montgomery Veterinary Associates

Mr. James H. Anderson

Mr. Louis C. Cardinal, III

Nix, Holtsford, Gilliland, Higgins &

Hitson, PC

Palomar Insurance

Smith Barney/Citigroup

The Bloom Group, Inc.

The Frederick Agency

Treherm & Wells DMD, PC

Weil Brothers Cotton, Inc.

## CONTRIBUTOR – \$150-\$100

Bear Lumber Co., Inc.

Admiral Movers, Inc.

Alabama Roofing Supply LLC

Colonial Bank

Davis & Copeland Realtors

Express Oil Change

Greenville Motor

Kingry Orthodontics, P.C.

Legg Mason

New England Financial

Parnell and Crum

Randy Fulmer

Synovus Mortgage

The Cunningham Group

## SUPPORTER – \$150-\$100

Williams Pecan Company



**Grand Total  
\$49,269**

**Thank  
you**



*Seriously...*

*We Deliver.*



At Jackson Hospital, we've been making deliveries special for generations. Warm. Tender. Caring. Clean. Safe. These are some of the words parents and families have used over and over to describe their birthing experiences at Jackson. We offer a wide array of parenting preparation classes. Learn more about having a healthy

*"Seriously...* when you're expecting a special delivery, you want Jackson."

pregnancy, parenting, Lamaze, a C-section birth, breastfeeding and "Your Amazing Newborn." We even offer programs for grandparents and siblings. Family birthing suites and all private rooms will help make your birthing experience special. If you're planning a pregnancy, call us first for information on your pre-pregnancy, pregnancy programs and other options. For a tour of Jackson Hospital's OB Unit, or to help you find a doctor, call 334-293-8888.



1725 Pine Street • Montgomery, AL  
[www.jackson.org](http://www.jackson.org)

# Junior League of Montgomery

1925

1926 Junior League of Montgomery was established

1927

1928

1929

1930

1931

1932

1933

1934

1935

1936

1937

1938

1939

1940

1941

1942

1943

1944

1945

1946

1947

1948

1949

1950

1951

1952

1953

1954

1955

1956

1957

1958 First League Rummage Sale

1959

1960

1961

1962

1963

1964

1965



League Logs first published 1928



First League Logs cookbook compiled



by Susan Mickler

- **JANUARY 1925** – Ten girls called twenty more and got together for the first meeting of the “Junior Auxiliary”.
- **JANUARY 1926** – After just one year on probation, the Junior League of Montgomery was established. This happened just 15 years after the first Junior League is formed in New York.
- **MARCH 1927** – Children’s Theatre was established to add cultural enrichment to school children’s lives, and our first inroad to the public school system was established.
- **APRIL 1928** – League Logs was first published due to the fundraising of the editor and staff by candy and cake sales. The name League Logs came from one of our initial homes of a log cabin located near the Montgomery Curb Market.
- **FALL 1931** – Provisional Training Requirements – were to attend seven lectures, do written reports of three of these lectures, and an examination on the Constitution and By-Laws of the Montgomery League, among others.
- **SEPTEMBER 1934** – Ways and Means Committee established and the inaugural Follies which was quite the hit with acts sometimes including both members and their husbands, regardless of talent.
- **SPRING 1940** – First Junior League of Montgomery Cookbook is compiled and published and sold for \$2.
- **SEPTEMBER 1943** – Frances Marks takes office as President – Once quoted as saying, “The status of the League today is the direct result of work, precedents and practices established from the beginning, and our present day image reflects the best of those all those years”.
- **FALL 1944** – Lavinia Lee Cassels becomes President for two years. This began a brief period of our Presidents serving two years, from 1944 through 1952.
- **OCTOBER 1952** - First Rummage Sale held and raised more than \$5000.
- **1953** – Moved twice along the same street, from 1752 Boulter to 2748 Boulter. This latter location was right behind the current Sinclair’s in Cloverdale.
- **SPRING 1955** – “During that time, we moved from the first small office to rent-free rooms in the basement of the old museum which was located in an old school at High and Lawrence Streets,” remembered Mrs. Sue Ashley, President 1955-56, in the 60th Anniversary Edition of League Logs.

# Timeline

Junior League moves

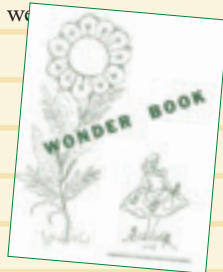


Junior League moves again

First League Larks (1960)



■ **DECEMBER 1961** – First issue of the Wonder Book. The book was compiled and published by the “career girls” and provided to hospitals and clinics where children were confined. It included games and puzzles for children to work on. Also saw top sales of \$8,857 from the Rummage Sale earlier that year.




■ **MARCH 1964** – The League again moved to Fairview Avenue. Dr. Grover Murchison donated the home to use. It was formerly the Alabama Cattlemen’s Association.

■ **SPRING 1968** – Membership requirements included a ‘proposer’ and two ‘endorsers’ to be considered by the Admissions Committee.


■ **1973** – Rummage Sale found a new home in Garrett Coliseum. The theme was “Rummage Sale Round-Up” and all the members dressed in western attire.



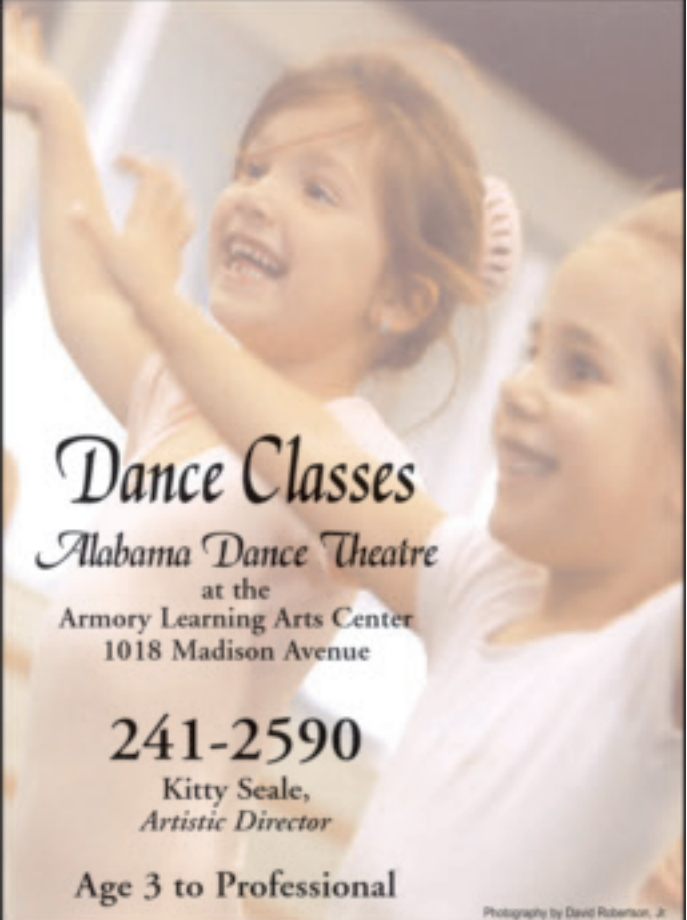
*Continued on page 36*

**Art Gallery Originals** 

EXCEPTIONALLY FINE OIL PORTRAITS AT AFFORDABLE PRICES



WWW.ARTGO.US  
TELEPHONE: (336) 723-0064  
EMAIL: INFO@ARTGO.US



**Dance Classes**  
*Alabama Dance Theatre*  
at the  
Armory Learning Arts Center  
1018 Madison Avenue

**241-2590**  
Kitty Seale,  
*Artistic Director*

Age 3 to Professional

Photography by David Robertson, Jr.

1966

1967

Horse Show

1968

1969

1970

1971

1972

1973

1974

1975

1976



# Timeline *continues*

- FALL 1978 – Horse Show becomes part of the Junior League and took an incredible amount of time to put on.
- SPRING 1979 – Provisional courses were a help, with meetings three times a week from 9:30 to 2pm for six weeks. A provisional would need seven sponsors and to pass the review of the Admissions Committee.
- EARLY 1980's – The Montgomery League was the only League to differentiate between working and nonworking Actives. There were separate meetings, requirement and of course placements.

1977

1978

1979

1980

1981

1982

1983



## *Holiday Market*

1984

1985

1986

1987

1988

1989

1990



Rummage Sale at the Coliseum

- FALL 1985 – Celebrating 60 years of service...League sponsors it's first College and Career Night at the Civic Center.
- SPRING 1988 – With the guidance of the Museum Task Force and \$30,000, the League introduced "ArtWorks".
- FALL 1989 – Holiday Market began with sixty merchants, a Preview Party and Silent Auction, Tea Room and lots of special events. Net proceeds with near \$62,000.
- SPRING 1990 – Rummage Sale is moved to the spring. Traditionally it was held in the fall to allow 'back to school' shopping.
- 1992-1993 – League was honored with the 1992 Media Award for our help in developing an advertising campaign to recruit new tutors for the Central Alabama Laubach Literacy Council.
- OCTOBER 1994 – Holiday Market, in it's sixth year, raises over \$113,000 and Rummage Sale raised \$51,000.

1991

1992

- NOVEMBER 1997 – Once considered a separate 'membership', by 1997 over 80% of the League have full or part time jobs.

1993

1994

1995

1996

1997

1998

1999

2000

2001

2002



- OCTOBER 1999 – Record setting Holiday Market earns \$195,000.
- JUNE 2000 – The League membership consists of 1053 members, with a welcoming of 103 new provisionals. This year also marked our 75th Anniversary.
- FALL 2002 – Voted to amend the Articles of Incorporation and bylaws of the League to no longer have an age limit for membership.
- SPRING 2005 – Discovery Village Playscape becomes a reality through the hard work of many volunteers and especially Tammy Eskridge, chairman.



*What happens next? Only you can write our accomplishments...*

2003

2004

2005

2006

*Thanks to Andrea Harris, Joanna McDonald and Catherine Davis for their wonderful 'records' in previous League Logs.*

*The following is reprinted from some original typed pages found in the Archives Room at the League Office. It was likely intended for an issue of League Logs sometime in the 1960's. What is fascinating about this article is the inside-look at some of the emotions surrounding the first election of officers during JLM's first year as a member of the National Association of Junior Leagues. While Mrs. Dozier (who was elderly when she wrote this) is careful not to name names, it is clear that the election left a lasting impression on her.*

# Everybody Was a Provisional

By Julia Marks Dozier

One day in January 1926 Ethel Salter (long since known to you as Mrs. Norman Gayle, Sr.) called me up and said, "Come to Mae Steiner's tomorrow. A few of us are getting up a little club called the Junior League."

I said, "Thank you; but what are you going to do? I don't know whether I want to join or not." (I knew I liked what the Tuesday card club did – eat and play a spasmodic game for bud vases and 25 cent handkerchiefs). "All [right]", she came back, but after tomorrow you have to be voted on." I was not a knowledgeable club woman at the time, but I had sense enough to hurry around to the corner of Hull and Alabam[a] (where Dr. Benkwith's office now stands) [the] next day.

Actually, our official name was [the] Junior Auxiliary. We were "on probation" for a year, "proving ourselves". Our avowed purpose was to become a member of the National Association of Junior Leagues. We were mighty happy when we were accepted. Some Leagues in the same boat with us did not make it for several years.

The first thing we did was to elect officers; and the second, to write a constitution, stressing mainly, so many hours of volunteer community service per month. Immediately we realized we needed more members to carry on all the good works we were planning, and to raise money.

That was a good year to learn what the word "blackball" meant. Those dear little old ladies (our grandmothers) did not have a committee to look up candidates' qualifications or their parents' contributions. Members just voted according to what they KNEW; and many knew that the others didn't know what they were talking about.

I remember one day, at our rooms down on Commerce St. – it was probably our first election. There was so much talking about what everybody knew and vice versa that the meeting had to be adjourned without any election. I really shouldn't tell you this, but when I get started on a confidence, it's hard to bridle my tongue. A meeting was called for a week later when one of the members was having a garden party and a certain group would be THERE. A nice smooth election took place that day.

I was Chairman of something called the Social Service Committee, which had its headquarters in a big old trunk on the Kohns' back porch on Court Street; but that's another story. ♪



# Famous Junior League Members

By Brenda Dennis

You need simply to look around you at a meeting or while working your placement to realize that you are in good company. You are a part of a network of women who have the desire to make a difference and are willing to increase their own busy schedules to volunteer their time and energy to improve communities all around the world. We come from all walks of life and our careers span the gamut. We are Mothers, Business Owners, Lawyers, Lobbyists, News Anchors and Career Volunteers, to name a few. When we come together on a task, we bring our talents and unique personalities to the table like pieces of a massive jigsaw puzzle; each one crucial to the whole. While you're pondering that, have a look at some famous names that have been in your shoes and ask yourself if you are in good company.

- ❖ **SHIRLEY TEMPLE BLACK** (b. 1928 – JL member in Palo Alto, CA) Former child actress and Diplomat
- ❖ **BARBARA BUSH** (b. 1925 – JL member in Houston, TX) Wife of former U.S. President George Herbert Walker Bush
- ❖ **LAURA BUSH** (b. 1946 – JL member in Austin, TX) Wife of current U.S. President George W. Bush
- ❖ **BETTY FORD** (b. 1918 – JL member in Grand Rapids, MI) Wife of former U.S. President Gerald Ford and founder of the Betty Ford Center for treatment of alcohol and drug addiction
- ❖ **KATHARINE HEPBURN** (b. 1907 – JL member in Hartford, CT) Academy Award winning film actress
- ❖ **SANDRA DAY O'CONNOR** (b. 1930 – JL member in Phoenix, AZ) First female Associate Justice of the Supreme Court of the United States from 1981 to 2006
- ❖ **NANCY REAGAN** (b. 1921 – JL member in Los Angeles, CA) Stage and screen Actress and wife of former U.S. President Ronald Reagan
- ❖ **ELEANOR ROOSEVELT** (b. 1884 – JL member in New York City) Wife of former U.S. President Franklin Roosevelt and noted advocate for human rights, serving after her husband's death in the United States Delegation to the United Nations General Assembly under President Truman
- ❖ **MARY HARRIMAN RUMSEY** (b. 1882 – JL member in New York City) At the age of 19, founded the Junior League for Promotion of the Settlement Movement in New York (now the Junior League)

Shirley Temple Black



Mary Harriman Rumsey



Barbara Bush



Laura Bush



Betty Ford



Katharine Hepburn



Sandra Day O'Connor



Nancy Reagan



Eleanor Roosevelt





**SNOOTY  
MISS MOODY'S**

FINE GIFTS FOR EVERY OCCASION

LOCATED IN D.W. MOODY • 3030 INGLEHEE ROAD  
MONTGOMERY, ALABAMA

CONTRACT SALES ♦ MARKETING ♦ PUBLIC RELATIONS



**Kathy Sternenbergh**

PHONE: 334-834-7999

EMAIL: STERNENBERG@KNOLOGY.NET

**Bill Davis  
Beverly Broach  
Prim Brown  
Jane Albright  
Leslie Sellers  
Staci Rogers  
Susan Cowart  
Bess Jenkins**

**Davis &  
Copeland  
Realtors**

2815-A Zelda Road  
Montgomery, AL 36106 Tel: 334.244.0550



You can also call for a free booklet, *"How to Find the Right Worship Home for You."*

**You can be more** of the person God wants you to be when you listen to His word.

He speaks to us everywhere: In the car. At work. In school.

But at Church, you can listen better. The "noise" of the world is out. The clarity of His message is in.

One thing's for sure: He wants you to be everything you can be.

Come worship with us this Sunday. Listen. What does God have to say to you?

**FIRST UNITED METHODIST CHURCH  
2416 W. Cloverdale Park • 334-834-8990**

*A Caring Community of Faith • [www.fumcmontgomery.org](http://www.fumcmontgomery.org)*



# Quick Ideas for Lazy Summer Afternoons

By Carla Gilmore, Education/Training Chair

Summer has really just started...school has been out only a few short weeks, vacation is still a month away, and the kids are already complaining that they're bored. The heat outside is becoming oppressive. Inside, boredom leads to irritability, whining, and fighting.

When little ones become tired and bored, parents need something engaging that requires minimal preparation and fuss. So, keep these quick ideas handy and have a little fun on a "boring" summer afternoon.

- **MAKE HOMEMADE ICE CREAM.** This is amazingly simple for such a special treat. Pick up a bag of ice, rock salt, a gallon of milk, and a can of sweetened condensed milk. Let your child mix the condensed milk, 1 and 1/2 cups of sugar, 1/8 teaspoon salt, and 1 tablespoon of vanilla extract with about two cups of milk. Stir until the sugar has dissolved, then pour into the freezer. Add more milk to the fill line, load it up with ice and rock salt, and let it run for about 40 minutes. Let your children prepare toppings that they like for an added treat.

- **TURN ON YOUR SPRINKLER.** Watermelons are so sticky and messy but they are too good to pass up on those hot summer afternoons. Rather than serving watermelon indoors, cut a whole melon into enough pieces for your children and their friends. Then send them outside and turn on the sprinkler. You don't even have to watch it, just let them loose to get as sticky and wet as they want.

- **GO TO THE LIBRARY.** Plan on staying for a while. Your children can discover new books and play on the computer, and you might even find a new read to brighten your afternoon. Check out a variety of books, audio, and video tapes to entertain the children for several days.

- **DISCOVER VIRTUAL TRAVEL.** Choose a U.S. Travel Scavenger Hunt at Education World. Print out the quiz sheet; point your browser to the U.S. National Park Service search engine at <http://www.nps.gov/parks.html> and let the kids take a virtual trip across the United States

- **START A NEIGHBORHOOD CO-OP.**

Round up parents of similar-aged children in your neighborhood and start a summer fun program for the kids. Parents can alternate care, and plan and carry out a fun outing for all participants for assigned days. There typically is no money that changes hands; the pay-off is that everyone equally takes turns and plans an enjoyable and safe day. Meeting and agreeing to a calendar of activities and events is advised.

Now you have some ideas for at least a few of the summer days ahead. Enjoy! 🏡





# Summer Time Gardening Tips

By Amy C. Brown

"Summertime and the living is easy.  
Fish are jumping and the cotton is high"

—Sam Cooke



It is officially summer. Gardening can be quite perplexing with the combination of heat, weeds, and insects. Here are some hot (no pun intended) summer gardening tips:

## PLANTING....

- Plant summer bedding plants that will give a rush of color all through the summer and often into autumn.
- Prepare the soil by removing any weeds, and applying fertilizer (either artificial or manure).
- Don't select plants in full bloom for planting. It is always better to choose plants that are about to flower because they will stand the shock of planting far better than those in full bloom.
- After planting, water the area heavily, and then water the plants frequently until the roots are established.
- Rock plants (Alpines) and herbaceous perennials (most garden flowers) can be grown from seed at this time of year, most types are relatively easy to grow and seeds are cheap. Herbaceous perennials are plants that bloom year after year. Their tops die back to the ground each fall, but their crowns and root systems remain alive (though dormant) during winter. They grow again from those roots and crowns when conditions are right the following spring.
- To maintain a bedding where plants are covered in flowers, you must feed the plants with a liquid feed. Be careful, as overfeeding encourages too much leaf growth as opposed



## SUMMER PERENNIAL TO LOOK FOR

### BLOOMING ALMOST ALL SUMMER:

Yarrow *Achillea*  
Baby's Breath *Gypsophila*  
Fern Leaf Bleeding Heart  
*Dicentra eximia*  
'Early Sunrise'  
*Coreopsis Coreopsis*  
Blanket Flower *Gaillardia*  
Pincushion Flower *Scabiosa*  
Blue Butterfly  
Stella D'Oro Daylilies  
*Hemerocallis*

### EARLY SUMMER

Woodland Phlox  
*Phlox stolonifera*  
Bearded and Siberian Irises  
Peonies (late may thru June)  
False Indigo *Baptisia*  
Jacob's Ladder *Polemonium*  
Astilbes, early  
Carnation *Dianthus*  
Bellflower *Campanula*  
Lady's Mantle *Alchemilla*  
Alliums, several varieties  
Blue Star *Amsonia*  
Primroses *Primula*  
Columbine *Aquilegia*  
Thrift *Armeria*  
Blue-Eyed Grass *Sisyrinchium*  
Cornflower *Centaurea*  
Delphiniums/Larkspur  
Gas Plant *Dictamnus*  
Foxglove *Digitalis*  
Fern Leaf Bleeding Heart  
Some Hardy Geraniums  
Avens *Geum*  
Meadowsweet *Filipendula*  
Foamy Bells *Heucher*  
Ornamental Grasses, Ferns,  
Hostas

Lungwort *Pulmonaria*  
Lady's Mantle *Alchemilla*,  
*Lamium* and *Ajuga*  
Groundcovers  
Lamb's Ears *Stachys*  
Coral Bells *Heuchera*  
Ginger *Asarum*  
Woolly Thyme *Thymus lanuginosa*, Solomon's Seal  
*Polygonatum ella*  
Lupine *Lupinus*  
Catchfly *Lychnis*  
Sundrops *Oenothera*  
Poppies *Papaver*  
Beardstongue *Penstemon*  
Meadow Rue *Thalictrum*  
Spiderwort *Tradescantia*

### MID SUMMER

Asiatic Lilies  
Daisy Fleabane *Erigeron*  
Globe Thistle *Echinops*  
Coral Bells *Heuchera*  
Goatsbeard *Aruncus*  
Butterfly Flower *Aesclepias*  
Astilbe most varieties  
Catchfly *Lychnis*  
Mallow Malva  
Shasta Daisy *Leucanthemum*  
Delphiniums, a few varieties  
Coneflower *Echinacea*  
Hostas  
Daylilies, most varieties  
Some Hardy Geraniums  
Perennial Sunflower *Heliopsis*  
Tansy *Tanacetum*  
Lavender *Lavandula*  
Gayfeather *Liatris*  
'The Rocket' *Ligularia*  
Flax *Linum*  
Bee Balm Monarda  
Catmint *Nepeta*

Sundrops *Oenothera*  
Sage Salvia  
Summer Phlox P. *paniculata*  
*and maculata*  
Balloon Flower *Platycodon*  
Thyme *Thymus*  
Goldenrod *Solidago*  
Veronica, some varieties

### LATE SUMMER

Goldenrod *Solidago*  
Veronica, some varieties  
Culvers Root *Veronicastrum*  
Daylilies some varieties  
Oriental Lilies  
Monkshood *Aconitum*  
Mallow *Malva*  
Catmint *Nepeta*  
Bee Balm *Monarda*  
Sage Salvia  
'Desdemona' *Ligularia*  
Cardinal Flower *Lobelia*  
Gooseneck Loosestrife  
*Lysimachia*  
Anemone some varieties  
Asters some varieties  
Hostas  
Astilbe a few varieties  
Coneflower *Echinacea*  
Perennial Sunflower *Heliopsis*  
Sneezeweed *Helenium*  
Gayfeather *Liatris*  
Joe Pye Weed *Eupatorium*  
Shasta Daisy *Leucanthemum*  
Snakeroot, Bugbane *Cimicifuga*  
Turtlehead *Chelone*  
Russian Sage *Perovskia*  
Summer Phlox P. *paniculata*  
Obedient Plant *Physostegia*  
Balloon Flower *Platycodon*  
Stonecrop *Sedum*  
Toad Lily *Tricyrtis*

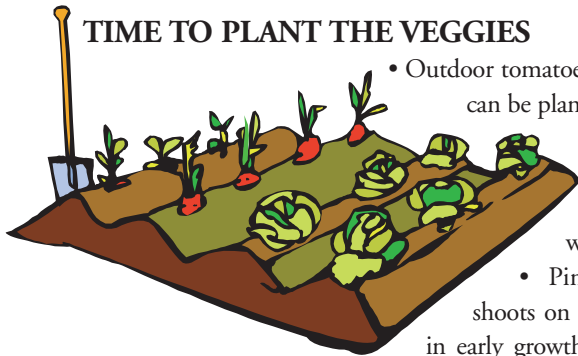
Continued on page 42

# Summer Time Gardening Tips

to desired flower growth. Hanging baskets and tubs need a weekly feed because the plant doesn't allow the roots to gather nutrients from the surrounding area when it is confined to a container.

- Remove the dead flowers on your bedding plants and other decorative plants. If the flowers are left to go to seed the plants will stop flower production.

## TIME TO PLANT THE VEGGIES



- Outdoor tomatoes and runner beans can be planted now.

- It is helpful to anchor and support the plants with garden canes.

- Pinch out the side shoots on your tomato plants in early growth to promote more growth and more flowers.

- Spray tomato plants lightly in the evenings to promote fruit setting. Do not wet the leaves during the day because in the heat of the day water can boil on the leaves and severely damage them.
- In August, pinch out the centre shoot of your tomato plants, in order to concentrate the plants' energy on filling out the existing tomatoes, rather than producing more growth
- Plant your late cauliflower, cabbage and brussel sprout plants.
- Prepare the ground well, remembering that vegetable plants are gross feeders, so they need a lot of feed mixed into the soil.
- Dust the stems with an anti cabbage root fly preparation soon after planting. Cabbage root fly lay their eggs in the stem, then the hatching maggots eat their way down to the roots and destroy the plant.

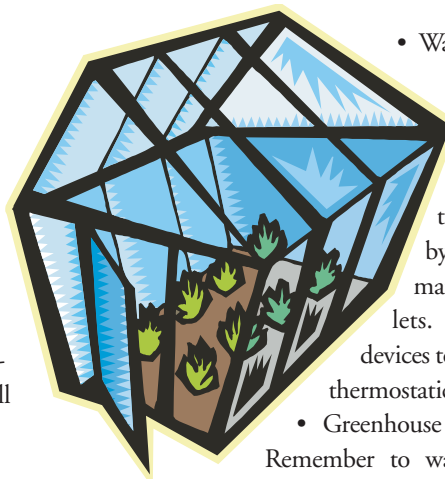
## IN THE GARDEN...

- Slugs and snails are ever present at this time of year, especially on your perennials. Eliminate them before they do too much damage.
- Keep an eye out for aphids on your plants. Aphids are any of the various small, soft-bodied insects that have mouthparts specially adapted for piercing. They feed by sucking sap from plants which leaves the plant dry and wilted. Aphids multiply fast at this time of year. There are sprays available to protect your plants. You can also wash them off with a weak mixture of detergent and water.



## IN THE GREENHOUSE...

- Harden off your hanging baskets, patio tubs, and any other plants you have grown for outside



- Watch out for pests. The insects warm up to the weather. Treat with a spray product as soon as infection is detected
- Off set the high temperatures that can occur in the greenhouse by shading. Many types of shading materials are available at retail outlets. You can also buy automatic devices to open glasshouse windows. Also, thermostatically controlled fans are available.
- Greenhouse plants need regular attention.

Remember to water tomatoes regularly because

irregular watering causes splitting.

## LAWN...

- At this time of year lawns take heavy punishment, the most important thing to remember is to maintain your lawn with attention.
- Pull out any weeds.
- Apply lawn fertilizer according to directions
- Make sure lawns receive at least six inches of rain (or watering) per week.
- Maintain lawn height at 2 1/2 inches

## FRUIT...

- Protect soft fruit from the birds' consumption by a bird-scarer. A great way to do this is by hanging CD disks in the surrounding trees. The CDs reflect the light in the breeze and scare the birds away.

## GOODBYE ROSES...

- Remove all flowers that are finished so they don't produce seed pods. If roses produce seed pods, the plant will not produce more flowers because it is using all its energy to produce seeds.
- Remove any flower buds that are failing to open and rotting as these buds can potentially carry disease.

## VACATION...

- Summer is traditionally filled with vacations. While you are away your plants may need some attention. Ask a neighbor or a friend to come by and give watering sessions. If you can't find anyone to help, spread wood chippings or peat around the plant roots, then soak them with water. This step will help prevent too much moisture evaporating during a hot summer day.

Please consult your local gardener for any questions you might have. You might also want to take advantage of the free weekly seminars hosted by Southern Homes and Gardens. You can find out the weekly topics by viewing their calendar at [www.southern-homesandgardens.com](http://www.southern-homesandgardens.com) 📅



## COLD BUTTERFLY SALAD

From *Southern Keepsakes* (p. 44)

Submitted by Mrs. Mike Jenkins

1 lb box farfalle (butterfly or shell shaped Italian pasta)      1 lb fresh peas or pkg. frozen peas  
2 tb oil      1 c sliced hearts of celery  
2 tb salt      3 green onions (green part also)  
1 c vinaigrette dressing (recipe below)      1 c chopped parsley

Bring water to a boil in large pot. Add oil and salt. Over high heat, add pasta. Stir. Cook 8 minutes until firm and drain. Put in large serving bowl and toss with 1/2 of the dressing to keep pasta from sticking together as it cools. Add salt and pepper. Boil peas until just done but firm and light green. Do not overcook if using frozen peas. Drain and add to pasta with other ingredients. Add rest of dressing. Toss well and season to taste. Serve at room temperature or cool but not cold.

### Vinaigrette Dressing

1/4 c wine vinegar  
3/4 c olive oil  
1 tsp dijon mustard  
salt  
freshly ground pepper

Yield: 12 servings

## STUFFED CRABS

From *Southern Keepsakes* (p. 54)

Submitted by Mrs. Robert E. Seibels, III

1 c crabmeat      2 T. melted butter  
1 c. saltine cracker crumbs      1 egg  
(not too fine)      2 T. lemon juice  
2/3 c. milk      1/2 t. salt  
1/8 t. tabasco sauce      4 saltine crackers  
1 t. worcestershire sauce      1/4 - 1/2 stick butter

Mix all ingredients well. Fill crab shells or ramekins. Crumble 1 additional cracker over each shell and dot with butter. Bake 20 minutes at 350.

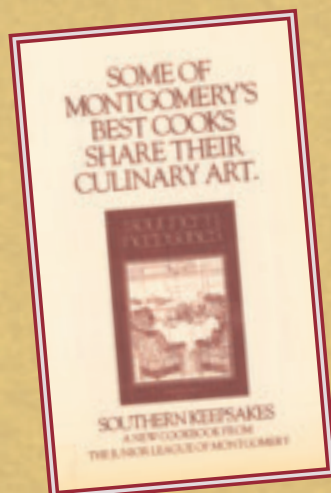
Yield: 3-4 servings.



# Cookbook on sale again!

*Cookbooks are on sale now at the League office for \$15.00.*

*Get your copy today and cook-up a little JLM culinary history tonight!*



# Top **10** Family Outings

By Jennifer Kornegay

*Our state is full of places to explore, things to see and adventures to try. There are so many fun, exciting and educational outings awaiting you and your family in Alabama, we simply don't have the space to list them all. So, instead, we picked 10 of our favorites, and we hope they'll help keep you and yours suitably entertained all summer long.*

## *Make Learning Fun*

### **MCWANE SCIENCE CENTER**

McWane Science Center in Birmingham is billed as “the South’s premier science center, aquarium and IMAX Dome Theater.” The museum spans four floors of exciting interactive science exhibits and displays and promises adventures galore with its many imaginative, hands-on activities. Permanent exhibits include: World of Water, ScienceQuest, Newsroom Studio, Just Mice Size and more.

In addition McWane Science Center constantly features traveling exhibits from other famous museums around the world. And, throughout the year, larger-than-life new films on the 5-story dome screen in the John W. Woods IMAX Theater transport you to far away places for an amazingly entertaining—and educational—experience.

[www.mcwane.org](http://www.mcwane.org)

## *Family Float*

### **THE CAHABA RIVER**

While it lacks the rush and thrill found in riding swift whitewater rapids, a canoe trip down the Cahaba, one of Alabama's lazier rivers, offers instead time to drink in the scenery and enjoy a conversation.

The docile Cahaba River near Birmingham has garnered attention in recent years after a botanist accidentally came upon eight totally new species of plant life while discovering the Cahaba's gentle waters for himself. The pale pink petals of Alabama gentian pinkroot, one of



MCWANE.: COURTESY KARIM SHAMSI-BASHA

the rarest plants in the world, were among the discoveries, and who knows what you and your family might find.

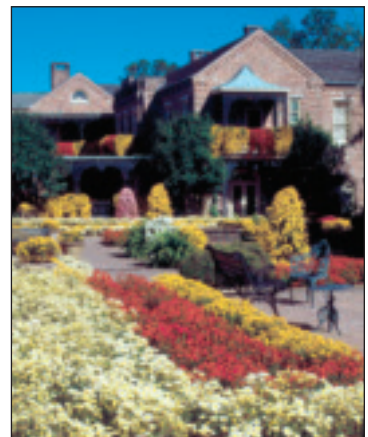
You can rent a canoe or kayak through Alabama Small Boats. (205) 424-3634.

## *How Green is the Garden*

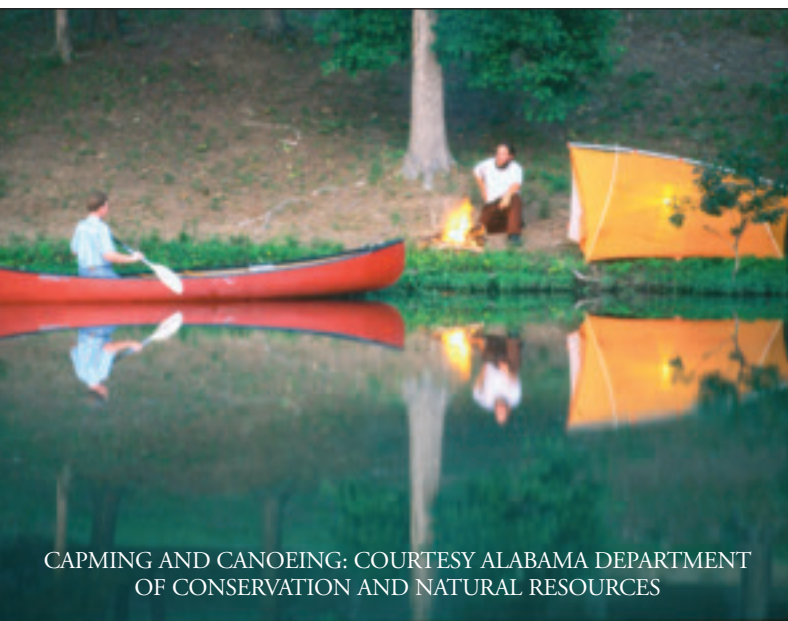
### **BELLINGRATH GARDENS**

There are spectacular gardens across Alabama, but among all the beauty, Bellingrath Gardens in Mobile stands out. Boasting a glorious array of flora (including over 250,000 Azaleas in spring), Bellingrath Gardens is in full bloom year-round. The gardens offer visitors 65 acres of landscaped loveliness among towering live oaks draped in Spanish moss. Points of interest include the Rose Garden, Conservatory, Great Lawn, Riverfront Walk, Chapel, Butterfly Garden, Rockery, Formal Gardens, Oriental- American Gardens and Mirror Lake, all making Bellingrath Gardens one of the most popular destination gardens in the United States.

Kids love the Ecological Bayou Boardwalk, which affords you an up-close-and-personal view of a peaceful bayou with its abundant fish and wildlife. The occasional alligator sighting makes the Bayou an unforgettable part of the visit. [www.bellingrath.org](http://www.bellingrath.org)



BELLINGRATH: COURTESY DAN BROTHERS



CAMPING AND CANOEING: COURTESY ALABAMA DEPARTMENT OF CONSERVATION AND NATURAL RESOURCES



### *You Are Go for Launch*

#### **THE U.S. SPACE AND ROCKET CENTER**

Make your Jetson family fantasies come true with a journey into outer space via The U.S. Space and Rocket Center in Huntsville. With exhibits and activities that bring out the inner astronaut in anyone, the Center is “out of this world” fun. Check out these highlights:

**Apollo Cockpit Trainer** — Get a true feel for the close quarters shared by astronauts in the APOLLO days as you sit inside the APOLLO Cockpit Trainer.

**IMAX®** — Get up close and personal as you watch an IMAX® film spectacular in our 67-foot, curved-screen Spacedome Theater. The giant screen fills your entire field of vision for an awe-inspiring, experience.

**Land the Shuttle** — You’re a pilot in this hands-on exhibit where you’ll reenter the Earth’s atmosphere and then land the Shuttle.

**Blackbird** — Check out the SR-71 Blackbird, the sleek U.S. Air Force spy plane, that flew coast-to-coast in less than 68 minutes.

**Rocket City Legacy** — Take a step back in time and discover Huntsville’s vital contribution to the U.S. Space Program as you tour Rocket City Legacy. [www.spacecamp.com](http://www.spacecamp.com)

### *On With the Show*

#### **ALABAMA SHAKESPEARE FESTIVAL**

We know. It’s right here at home, but that doesn’t mean it’s not a candidate for a fun, family outing. It’s the sixth largest Shakespeare theater in the world, with more than 200,000 visitors annually, and



ALABAMA SHAKESPEARE THEATER

hosts a variety of classical and contemporary theatrical productions year-round. A true family favorite, “To Kill A Mockingbird,” is playing through July 23. [www.asf.org](http://www.asf.org)

### *Fast Fun*

#### **BARBER MOTORSPORTS PARK**

The Barber Motorsports Park outside of Birmingham, all 740-acres of it, is a quick, easy trip from Montgomery, situated right of

*Continued on page 45*

# Top 10 Family Outings

I-20. The Park is an racing enthusiast's dream come true, thanks in part to the stellar Barber Motorsports Vintage Museum, packed with cars, motorcycles and racing memorabilia.

The museum boasts one of the best motorcycle collections in the United States, with 750 vintage and modern motorcycles. Car fans won't be disappointed either. The museum also has a substantial collection of Lotus and other racecars. But you don't have to be a die-hard race fan to enjoy a trip to the Park. The beautiful, green, undulating hills and huge, eye-catching sculptures leading into the Park make for a pleasant outdoor outing, and the museum is certainly family-friendly. [www.barbermotorsports.com](http://www.barbermotorsports.com)

## *Trekking Together*

### **CHEAHA STATE PARK**

At 2,407 feet above sea level, Cheaha Mountain is the highest point in Alabama. This 2,799-acre mountaintop retreat provides breathtaking scenery year-round. Enjoy hiking along the trails winding through the natural beauty and fresh air of the Cheaha Mountain area. [www.alapark.com](http://www.alapark.com)



## *It's a Natural*

### **ANNISTON NATURAL HISTORY MUSEUM**

Explore darkest Africa, immerse yourself in the natural wonders of North American wilderness, and unravel the mysteries of 2,000-year-old mummies in the seven fascinating exhibit halls of the Anniston Museum of Natural History in Anniston. It houses one of the oldest ornithology collections in the nation and it features more than 450 specimens of birds, including extinct and endangered species.

Don't miss the children's discovery room for hands-on experiences. Permanent exhibits include: Dynamic Earth, Sand to Cedars, Attack and Defense and Ancient Egypt.

The Changing Exhibit Gallery hosts temporary exhibits produced by the museum and by art councils and museums throughout the country. [www.annistonmuseum.org](http://www.annistonmuseum.org)

## *History Lives*

### **FORT MORGAN STATE HISTORIC SITE**

This massive brick fort, completed 1834, serviced the Civil War, Spanish-American War and both world wars. It played a major role during the Battle of Mobile Bay in 1864, when Confederate and Union naval forces fought for control of the harbor entrance.

Its rich heritage comes alive as guides and enactors explain how the Spanish used Fort Morgan in the 1500s, and then rebuilt it in the early 1800s as protection against Native Americans. Fort Morgan is 22 miles west of Gulf Shores on Highway 180. 251-540-7125

## *Get Your Sea Legs*

### **BATTLESHIP MEMORIAL PARK**

Battleship Memorial Park in Mobile is one of America's finest military parks and showcases the mighty USS ALABAMA. Here, along the shores of Mobile Bay, you'll experience heroism spanning more than seven decades from World War II to Desert Storm.

Along with the battleship, you can explore: The Submarine USS DRUM, and air-conditioned aircraft pavilion, a fight simulator ride, multiple military bombers and fighter planes, the B-52D "Calamity Jane", an A-12 Blackbird spy plane, Tuskegee Airmen's P-51d Mustang and more. [www.ussalabama.com](http://www.ussalabama.com)

*Photos courtesy Alabama Department of Tourism and Travel*



USS ALABAMA: COURTESY  
KARIM SHAMSI-BASHA

# Wrapping Up a Great Year: Provisional Class 2005-2006

By Susannah Cleveland (Outgoing Provisional Chair)

I know that one person can make a difference, and I strongly believe in that premise. However, throughout my life I have been more amazed by the impact that a group of hard-working people can make when they work together toward a common goal. That is just what this year's Provisional Class has begun to do in our community. These dynamic women have learned about the Junior League of Montgomery by attending monthly Provisional meetings, General Membership meetings, volunteering at the Holiday Market, Habitat for Humanity, The Montgomery Public Schools, and the Salvation Army, and raising nearly \$4,000 through their sale of Sally Foster gift-wrap. The class voted to give the Junior League this money to help defray the cost of updating its web-site and upgrading to Digital Cheetah, a program that will allow League members to better track their obligations, placement requirements, etc. What is most impressive is that nearly 77% of these women work and many of them have

families as well. One class member got married during the course of the year, and nine babies were born!

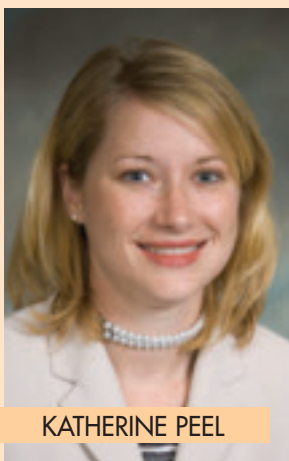
To celebrate the completion of their busy year, the Provisional Class was honored at an end-of-the-year dinner at Noble's restaurant downtown. This was a delightful evening in which the class could relax and celebrate the completion of the year and all of their hard work.

During the 80th Anniversary Gala and May meeting, members of the Provisional Class were recognized and officially changed their status to First Year Actives. These women are the future leaders of the Junior League of Montgomery, and many have already stepped into leadership roles next year. It is exciting to know that with the skills, talent, and drive that the women of the 2005-2006 Provisional Class possess, the Junior League is on the right path to continue to make a difference in the lives of families in Montgomery...by working together!

## provisional profiles

### KATHERINE PEEL

**Occupation:** Pharmaceutical Sales Representative, Takeda Pharmaceuticals  
**Hometown:** Selma, AL  
**College:** Troy University  
**Hobby:** Gardening  
**Favorite food:** Brownies  
**Favorite family tradition:** Baking cookies at Christmas



KATHERINE PEEL

### HEATHER (DAVIS) PINCKARD

**Occupation:** Homemaker  
**Hometown:** Trussville, AL  
**College:** Auburn University at Montgomery  
**Spouse:** Russ, CFO of ASECU  
**Children:** Drew, nine years old, and Sarah, three years old  
**Favorite food to prepare:** Rum cake  
**Favorite vacation spot:** Destin  
**Other Activities:** Sunday school teacher/vacation bible school



HEATHER PINCKARD

### STACIE (HAMMONDS) PELHAM

**Hometown:** Huntsville, AL  
**College:** Auburn University  
**Spouse:** Jerry, Self employed  
**Child:** Blair, one year  
**Hobbies:** reading, running, learning to play tennis  
**Favorite Book:** Gone With the Wind  
**Favorite weekend activity:** Going to the beach or farm with husband



STACIE PELHAM

### CHRISTY RHODES

**Occupation:** Communication, Department of Agriculture and Industries  
**Hometown:** Huntsville, AL  
**College:** Athens State  
**Favorite food:** Chocolate  
**Favorite weekend activity:** Sleeping in  
**Other Activities:** Artist in the MLA Program at AUM



CHRISTY RHODES

**provisional profiles**

**CATY (HOUSTON) RICHARDSON**

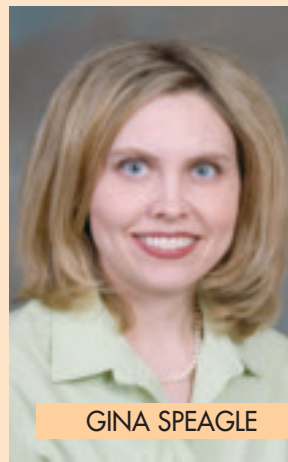
**Occupation:** Attorney, Capell and Howard, P.C.  
**College:** Alabama School of Law  
**Spouse:** Ed, Engineer, International Paper  
**Favorite food to prepare:** Desserts  
**Favorite painter:** Van Gogh & Local artists  
**Favorite sport to play:** Tennis  
**Favorite holiday activity:** Christmas Eve service and dinner  
**Hobbies:** exercising, reading, water skiing, writing



CATY RICHARDSON

**GINA (MAISE) SPEAGLE**

**Occupation:** Attorney/Homemaker  
**Hometown:** Gadsden, AL  
**College:** Birmingham Southern  
**Spouse:** Scott, attorney, Hill, Hill, Carter  
**Child:** Sydney Charlotte, two years  
**Favorite food to eat:** Mexican  
**Favorite musician:** Maroon 5  
**Hobbies:** Walking, reading, scrapbooking  
**Favorite holiday activity:** baking Christmas cookies



GINA SPEAGLE

**SALLY ROBINSON**

**Occupation:** Appointments manager for Governor Bob Riley  
**College:** Auburn  
**Favorite food to eat:** Pizza  
 Favorite Festival: Santuck  
**Favorite artist:** Dot Robinson (Grandmother)  
**Club memberships:** Chair of Capitol City Young Republicans, Senior Executive Board for Cancer Society

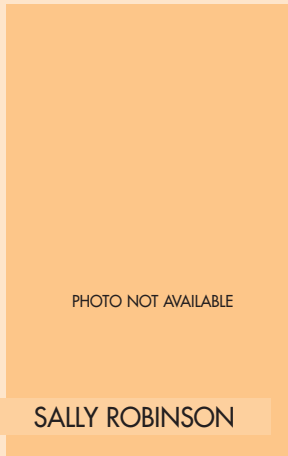
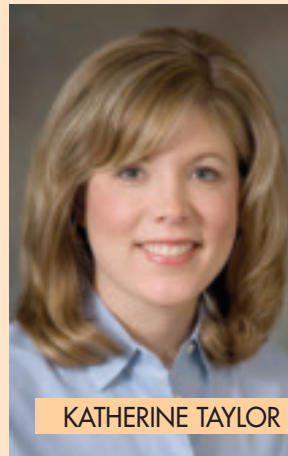


PHOTO NOT AVAILABLE

SALLY ROBINSON

**KATHERINE (MCLEAN) TAYLOR**

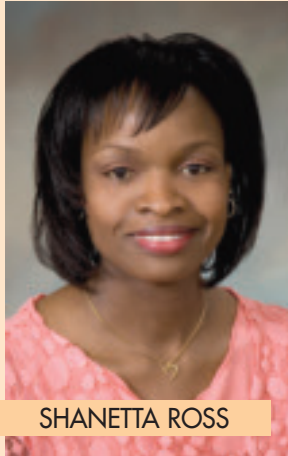
**Occupation:** Former Attorney/Homemaker  
**Hometown:** Vestavia Hills, AL  
**College:** University of Alabama  
**Spouse:** Roddy, Transmission Lines Supervisor, Alabama Power Co.  
**Child:** Abigail Taylor, two years old  
**Favorite food to eat:** Seafood  
**Favorite Musician:** Paul Simon  
**Favorite annual event:** Alabama/Auburn Football Game  
**Hobbies:** Playing piano for Sunday Brunch at the Wynfrey Hotel in Birmingham  
**Community service:** Arthritis Foundation, United Way Coordinator



KATHERINE TAYLOR

**SHANETTA (KNIGHT) ROSS**

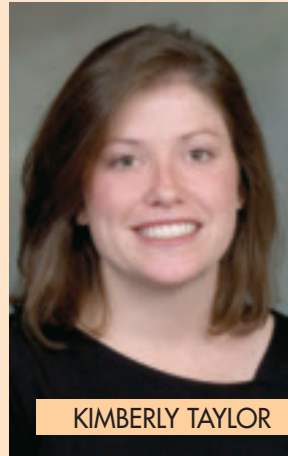
**Occupation:** Case Administrator, Chapter 13 Trustee's Office  
**College:** Faulkner University  
**Spouse:** SFC Bryant Ross, Recruiter, United States Army  
**Child:** Darrell Ross, eight years old  
**Favorite food to eat:** Crab legs  
**Favorite musician:** Nora Jones  
**Favorite weekend activity:** Sunday drive in the country  
**Favorite family traditions:** Annual family reunions  
**Hobbies:** Reading, traveling, and spending time with family



SHANETTA ROSS

**KIMBERLY (GEORGE) TAYLOR**

**Occupation:** Teacher, Montgomery Public Schools  
**College:** Auburn University  
**Favorite weekend activity:** Cooking out with friends  
**Favorite family activity:** Fishing at the beach  
**Favorite author:** John Grisham  
**Hobbies:** Exercise and reading  
**Other club memberships:** El Domino and Wynlakes



KIMBERLY TAYLOR

**RUBY (POWELL) SMITH**

**Occupation:** Staff Accountant, State of Alabama  
**College:** Tuskegee University  
**Spouse:** Darrell, State of Alabama  
**Child:** Dameyune, twelve years old  
**Favorite food to prepare:** Chicken salad  
**Favorite annual event:** Jubilee  
**Favorite vacation spot:** North Carolina  
**Community service:** Community Care Network



RUBY SMITH

**BRITTNEY (FLANNERY) THOMPSON**

**Occupation:** Pharmacist, Montgomery Cancer Center  
**Hometown:** Birmingham, AL  
**College:** Auburn University  
**Spouse:** Greg, engineer, AME Engineers  
 Favorite music: Oldies  
**Favorite annual event:** Strawberry Festival in Loxley, AL  
**Favorite vacation spot:** Lookout Mountain, TN  
**Favorite holiday activity:** The whole family wearing matching pajamas  
**Hobbies:** Tennis, reading



BRITTNEY THOMPSON



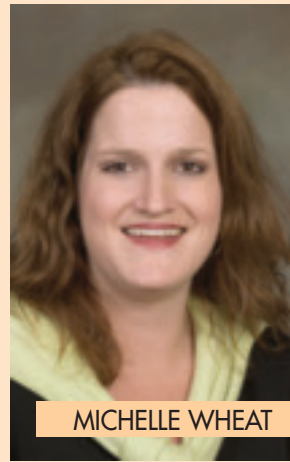
## provisional profiles

### ROSALIND TOLES

**Occupation:** Revenue Examiner, Department of Revenue  
**College:** Auburn University at Montgomery  
**Child:** Brendan, eight years old  
**Favorite food to prepare:** Breakfast food  
**Favorite musician:** Brian McKnight  
**Favorite annual event:** Flimp Festival  
**Hobby:** Shopping  
**Community Service:** Disciple Now Weekend, Gathering of Leaders  
**Board Member:** League of Women Voters, Clean City Commissioner



ROSALIND TOLES



MICHELLE WHEAT

### MICHELLE (HICKS) WHEAT

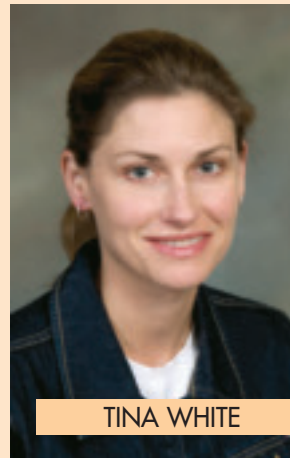
**Occupation:** Teacher, Elmore County Board of Education  
**Hometown:** Millbrook, AL  
**College:** Faulkner University and TSUM  
**Spouse:** Scott, Machinist, Owner of Met-Tech Machining  
**Favorite food to eat:** Cheesecake  
**Favorite weekend activity:** Shopping  
**Favorite annual event:** Shopping trip on the day after Thanksgiving  
**Favorite family holiday activity:** Baking with family members at Christmas

### JACQUELINE (HAHN) WALLER

**Occupation:** Interior designer, Barganier, Davis, Sims Architects  
**Hometown:** Mobile, AL  
**College:** University of Alabama  
**Spouse:** Chris, attorney, Ball, Ball, Mathews and Novak  
**Favorite food to eat:** Mexican  
**Favorite vacation spot:** Beach  
**Community service:** Junior executive for American Cancer Society and Development Commission for Children First Foundation



JACQUELINE WALLER



TINA WHITE

### TINA (CAIN) WHITE

**Occupation:** Guidance counselor, Montgomery Public Schools  
**College:** Auburn University  
**Hometown:** Mobile, AL  
**Spouse:** Richard, Attorney, District Attorney's Office  
**Favorite food to prepare:** Chicken salad  
**Favorite Author:** C.S. Lewis  
**Favorite vacation spot:** Any place tropical  
**Favorite sport to watch:** Auburn football  
**Hobby:** walking

### ANNA (ROOT) WAMSTEAD

**Occupation:** Learning specialist, Trinity Presbyterian School  
**College:** Samford University and Auburn University  
**Spouse:** Paul, Systems Analyst, Unisys  
**Favorite food to eat:** Salads  
**Favorite sport to watch:** College basketball  
**Favorite book:** Count of Monte Cristo  
**Favorite vacation spot:** Vancouver  
**Favorite family tradition:** Singing (with motions) the 12 days of Christmas at extended family Christmas Eve party



ANNA WAMSTEAD



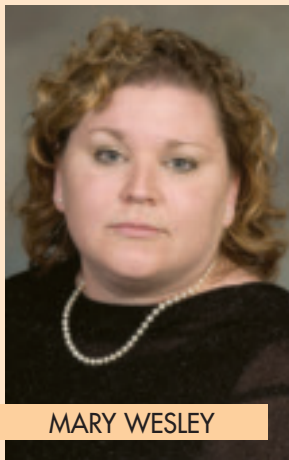
VICKIE WILSON

### VICKIE (LINK) WILSON

**Occupation:** Homemaker  
**Hometown:** Selma, AL  
**College:** Auburn University  
**Spouse:** Glen, Senior Technician, Southern Company  
**Favorite food to eat:** Chinese  
**Favorite musician:** Celine Dion  
**Favorite sport to watch:** NASCAR  
**Favorite holiday activity:** Spending Christmas at family beach house  
**Hobbies:** Cooking, reading, playing piano  
**Award received:** Dale Carnegie Highest Award for Achievement  
**Interesting Fact:** Can fly a plane

### MARY WESLEY

**Occupation:** Pre-school teacher, Director of MA+ at The Montgomery Academy  
**Hometown:** Roswell, New Mexico  
**College:** University of Texas, Arlington  
**Spouse:** Josh, Full-time student and Burleson Sporting Company  
**Favorite food to eat:** Mexican  
**Favorite weekend activity:** Sleeping  
**Favorite family holiday activity:** Gowin Christmas Eve Party  
**Favorite vacation spot:** New Mexico and California  
**Other community service:** MACOA, Montgomery AIDS Outreach



MARY WESLEY



LEIGH WINSLETT

### LEIGH (HALL) WINSLETT

**Occupation:** Attorney/Trust Officer, Regions Bank  
**Hometown:** Tallassee, AL  
**College:** AUM and Jones School of Law  
**Spouse:** Joel, Commercial Lender, Sterling Bank  
**Children:** Norah, five years old, McKenzie, three years old  
**Favorite food to prepare:** Pizza  
**Favorite musician:** Tim McGraw  
**Favorite annual event:** Fourth of July  
**Other club memberships:** Estate Planning Council Board, Secretary/Treasurer of Trust Division of the Alabama Bankers Association

**provisional profiles**

**MISHA (MULLINS) WHITMAN**

**Occupation:** Attorney

**Hometown:** Montgomery, AL

**College:** Transylvania University and University of Alabama School of Law

**Spouse:** Josh

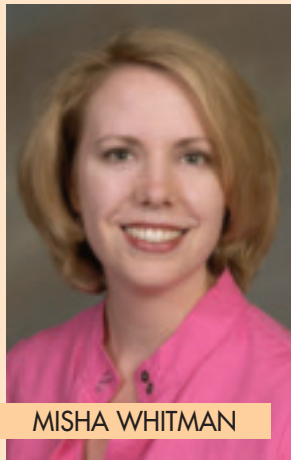
**Favorite food to eat:** Mexican

**Favorite Book:** Mystery and Suspense Novels

**Favorite weekend activity:** Yard work and biking

**Favorite vacation spot:** Brosnan Forest, South Carolina

**Hobbies:** Scuba diving and Geocaching



MISHA WHITMAN

PROVISIONAL PROFILES COMPILED  
BY SHARON HIGGINS  
PORTRAITS BY THE ROBERTSONS



**Rewrite the law of supply and demand.**

When demand for your marketing material is high, you need to be sure you've got an adequate supply and the means to distribute it. Davis Direct's comprehensive, fully customizable fulfillment service provides real-time inventory reports and tracking information so you can stay on top of your material.

Contact Davis Direct when it's time to get **Ready. Print. Go >>**



**d a v i s d i r e c t**

**Ready. Print. Go >>**

1241 Newell Parkway, Montgomery, AL 36110

Tel 334 277 0878 | Fax 334 277 2518

DAVISDIRECT.NET

# Thank you to our advertisers

ALABAMA DANCE THEATRE .....35  
 ART GALLERY .....35  
 BROMBERGS .....2  
 CLAY, METAL & STONE .....17  
 COLONIAL BANK .....9  
 DAVIS & COPELAND REALTORS .....39  
 DAVIS DIRECT .....50  
 DIXIE ELECTRIC .....27  
 D.W. MOODY TRUE VALUE HARDWARE .....39  
 EASTDALE MALL .....BACK COVER  
 FIRST UNITED METHODIST CHURCH .....39  
 HAROLD'S .....21  
 HOLY CROSS EPISCOPAL SCHOOL .....29  
 JACKSON HOSPITAL .....33  
 KLEIN & SON JEWELERS .....4

LIBBY WEATHERLY PHOTOGRAPHER .....13  
 THE LOCKER ROOM .....31  
 MONTGOMERY ACADEMY .....51  
 MONTGOMERY BALLET .....15  
 MONTGOMERY VETERINARY ASSOCIATION .....31  
 PEACHES'N CLEAN .....23  
 REGIONS BANK .....23  
 RICHARDSONS PHARMACY .....15  
 ROBERTSONS PHOTOGRAPHY .....7  
 STERLING BANK .....15  
 STERNENBERG M&C .....39  
 STRASBERG CHILDREN .....15  
 THE BEACH CLUB .....27  
 TLR OUTDOORS .....31  
 TRINITY PRESBYTERIAN SCHOOL .....11

# Sometimes our students lose their art homework. To museums.



The Montgomery Academy

NOT YOUR AVERAGE EDUCATION.

NOT YOUR AVERAGE ACADEMICS

NOT YOUR AVERAGE ATHLETICS

NOT YOUR AVERAGE ARTS

For more info contact Susannah Cleveland, Director of Admissions, at [cleveland.s@montgomeryacademy.org](mailto:cleveland.s@montgomeryacademy.org)

1-888-345-8210, 334-272-8210 or fax 334-277-3240.

[www.montgomeryacademy.org](http://www.montgomeryacademy.org)

The Montgomery Academy admits students of any race, religion, national or ethnic origin to all the rights, privileges, programs and activities generally accorded or made available to students of the school.

Junior League of Montgomery, Inc.  
3570 Carter Hill Road  
Montgomery, Alabama 36111  
www.juniorleaguemontgomery.com

Non-Profit Org.  
U.S. Postage  
PAID  
Permit No. 87  
Montgomery, AL



Spend Hot Summer Nights

in side!

Cool activities for the entire family every Friday  
and Saturday night this summer.

New entertainment and  
store discounts every weekend!

FREE *Ice Skating* for kids under 10\* every Friday and  
Saturday night 6pm - 8:30pm.

Visit [www.shopmalls.com](http://www.shopmalls.com) for more details!



E A S T D A L E  
M A L L

*Atlanta Highway & Eastern Boulevard*

Dillard's, JCPenney, Parisian Women, Parisian Men and Children,  
Sears and over 85 Specialty Shops!

\*accompanied by an adult.