

# League *Logs*

Summer 2014



A COMMUNITY PUBLICATION OF THE JUNIOR LEAGUE OF MONTGOMERY, INC.





# An education that opens doors.

CONGRATULATIONS TO THE CLASS OF 2014 AND THEIR RECORD-BREAKING  
**\$6.8 MILLION IN MERIT SCHOLARSHIPS!**

SAINT JAMES SCHOOL GRADUATES HAVE BEEN ACCEPTED TO THE FOLLOWING COLLEGES AND UNIVERSITIES:

Agnes Scott College  
 Air Force Academy  
 University of Alabama  
 University of Alabama, Birmingham  
 University of Alabama, Huntsville  
 American University  
 Appalachian State University  
 Arizona State University  
 University of Arkansas  
 Auburn University  
 Auburn University Montgomery  
 Baylor University  
 Belhaven College  
 Belmont University  
 Birmingham-Southern College  
 Boston College  
 Boston University  
 Brevard College  
 Brown University  
 Bryn Mawr College  
 California State Polytechnic Institute  
 Carnegie Mellon University  
 Case Western Reserve University  
 University of Chicago  
 The Citadel  
 Clemson University  
 College of Charleston

College of William & Mary  
 Colorado School of Mines  
 University of Colorado  
 Columbia University  
 Cornell University  
 Dartmouth College  
 Davidson College  
 University of Delaware  
 Drexel University  
 Duke University  
 Elon University  
 Embry Riddle Aeronautical University  
 Emory University  
 Emory & Henry University  
 Florida Atlantic University  
 Florida State University  
 University of Florida  
 Furman University  
 Georgetown University  
 George Mason University  
 George Washington University  
 University of Georgia  
 Georgia Institute of Technology  
 Grambling State University  
 Grinnell College  
 University of Hartford  
 Harvard University  
 Hollins University

Huntingdon College  
 Indiana University  
 Judson College  
 University of Kansas  
 University of Kentucky  
 Kettering University  
 LaSalle University  
 Liberty University  
 Lipscomb University  
 Louisiana State University  
 University of Louisiana-Lafayette  
 University of Louisiana-Monroe  
 University of Louisville  
 Loyola University  
 University of Maryland  
 Maryville College  
 University of Massachusetts  
 University of Miami  
 Millsaps College  
 Mercer University  
 Middlebury College  
 University of Mississippi  
 Mississippi College  
 Mississippi State University  
 University of Missouri  
 University of Mobile  
 University of Montevallo  
 Mount Holyoke College  
 University of Nebraska

New York University  
 University of North Alabama  
 University of North Carolina  
 North Carolina School for the Arts  
 University of Northern Iowa  
 Northern Arizona University  
 Northwestern University  
 University of Notre Dame  
 Oberlin College  
 Ohio State University  
 Oxford College  
 Oxford University, England  
 Pepperdine University  
 University of Portland  
 Princeton University  
 Providence College  
 Purdue University  
 Regents College, London  
 Rhodes College  
 Rice University  
 Ringling School of Art and Design  
 Rutgers University  
 Saint Louis University  
 Samford University  
 San Diego State University  
 Savannah College of Art and Design  
 Smith College  
 University of Southern California

University of Southern Mississippi  
 University of the South: Sewanee  
 University of South Alabama  
 University of South Florida  
 University of South Carolina  
 Spring Hill College  
 Stanford University  
 Sweet Briar College  
 University of Tennessee  
 University of Texas  
 Texas State University  
 Troy University  
 Tulane University  
 Tuskegee University  
 University of Virginia  
 United States Military Academy  
 United States Naval Academy  
 Vanderbilt University  
 Virginia Polytechnic Institute  
 Wake Forest University  
 Washington University in St. Louis  
 Washington and Lee University  
 Wesleyan College of North Carolina  
 Wesleyan University  
 University of West Florida  
 West Point Military Academy  
 Western Michigan University  
 Xavier University



**Saint James School**  
 for pre k3-12th grade admissions **334.273.2992**

6010 Vaughn Rd., Montgomery [stjweb.org](http://stjweb.org)

English as a second language (ESL) tutoring provided. Saint James School admits students of any race, color, national and ethnic origin to all the rights, privileges, programs and activities generally accorded or made available to students at the school.



**Distinguished School**

Recognized by Apple as a distinguished school for innovation, leadership, and educational excellence.





**2013-2014**  
one mission. one membership. one league.

Editor Cindy DeLongchamp

Co-Editor Jewell Dickson

Guest Photographer Photography by  
the Robertsons

Staff Photographers Candice Butterfield  
and Angela McCormick

Advertising Manager and Copy Editor  
Carmen McCullough

Business Manager Karen Herman

Writers Mary Margaret Carroll,  
Joyce Loyd-Davis, Jewell Dickson,  
Marcy Ingram, Jeanie Parnell,  
Leslie Pitman, Katy Sulhoff, Erin Turnham

Graphic Designer Leigh Ann Farrior

Printer Davis Direct

#### Board of Directors

President  
Dawn Stephens

President Elect  
Ashley White

Finance Council Vice President  
Anna Wilson

Community Council Vice President  
Jeanie Parnell

Membership Council Vice President  
Kimberly Baker

Communications Council Vice President  
Angela Foshee

Operations Council Vice President  
Felicia Long

Fundraising Council Vice President  
Kara Cosby

Advisory Planning Chairman  
Leslie Robertson

Governance Chair  
Wynn Dee Allen

Recording Secretary  
Jenny French

Nominating Chairman  
Deborah Moore

Member at Large  
Hayley Harris

Director at Large  
Melissa Bowman

Sustaining Advisor  
Laura Stevenson

#### Mission Statement

The Junior League of Montgomery, Inc. is an organization of women committed to promoting voluntarism, developing the potential of women and improving the community through the effective action and leadership of trained volunteers. Its purpose is exclusively educational and charitable.

The opinions expressed in this publication do not necessarily reflect those of the Junior League of Montgomery, Inc.

League Logs is published three times a year by the Junior League of Montgomery, Inc. Copyright 2014. No reproduction is permissible in any form without written permission of the Editor, 3570 Carter Hill Road, Montgomery, AL 36111.

334-288-8816 :: [www.jlmontgomery.org](http://www.jlmontgomery.org)

## Editor's Notes

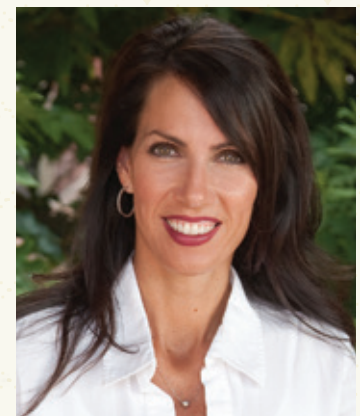
*"People will forget what you said. People will forget what you did. But people will never forget how you made them feel."*

-Maya Angelou

I've heard many things in the local and national media recently about "paying it forward," promoting giving and kindness in our society, where negative stories often seem to dominate the headlines. The Junior League plans to roll out its own initiative to promote goodwill with *one small act*, which you'll read about in this issue. After witnessing and personally writing about the League's community projects for several years, I see how our efforts change and enhance the lives around us. In this issue, we share heartwarming stories about our volunteers that work with Montgomery AIDS Outreach & Clefworks, among many others. In addition to our incredible volunteer force, we are thankful for our sponsors, donors and community partners that share our desire to make our community a better place and enhance the lives of our neighbors.

In this, my final issue as Editor, I want to thank my staff of writers and photographers, Angela Foshee for her guidance, and Carmen McCullough for her editing skills. Best of luck to our new Editor, Jewell Dickson, next year! On a personal note, I am excited to embark on my next stage of League participation by becoming a Sustainer. There are so many exciting things going on in the Junior League and I can't wait to watch the positive impact that the League continues to make in our community.

I may forget a few things that I've heard at the Junior League, and I may forget a few things that we have done, but I will never forget how this rewarding journey and the friendship of so many amazing women made me feel.





# League Logs

## SUMMER 2014 EDITION

Volume 88 Number 3

### Features

Sustainer Luncheon

PAGE 52

2014-2015  
Board of  
Directors

PAGE 38

Supporting  
Our  
Community

PAGE 30

*one mission. one membership. one league.*

### Promoting Voluntarism

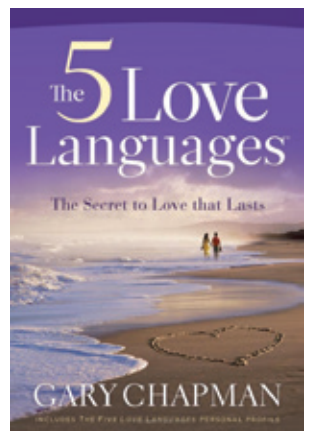
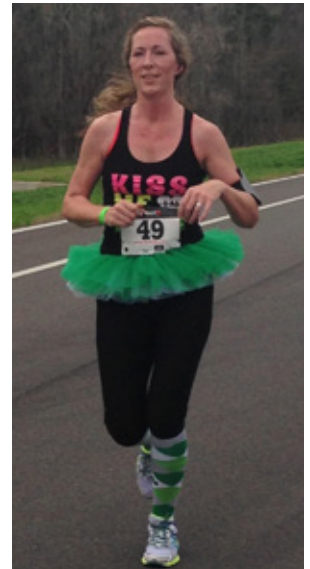
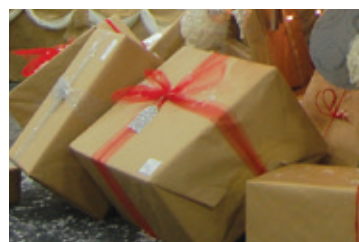
Final General Membership Meeting	14
2014-2015 Chairs Spotlight	24
Save the Date! Holiday Market 2014	36
2014-2015 Board of Directors	38
Sustainer Luncheon	52

### Developing the Potential of Women

One Small Act	28
Books on the Nightstand	46

### Improving the Community

Shamrock Shuffle	20
Supporting Our Community	30
Provisional Class	34
Montgomery AIDS Outreach	37
Mark Your Calendar	50
Donor Appreciation Luncheon	56
ClefWorks	61







## Departments

EDITOR'S NOTES	3
INDEX OF ADVERTISERS	5
PRESIDENT'S MESSAGE	6
SUSTAINER OF THE YEAR, LISA WEIL	10
THANK YOU, JLM	62



## FINAL GENERAL

# Membership Meeting

The annual final meeting of the membership is a time to reflect, look ahead, and celebrate the fruits of our labor by awarding grants to local non-profit organizations. *Story on Page 14*

### SUPPORT THOSE THAT SUPPORT US! THANK YOU TO OUR ADVERTISERS:

Alabama Dance Theatre	27	Eastdale Mall	64	Montgomery Catholic Preparatory School	23
Alabama River Region Ballet	8	Faulkner University	49	Peaches 'n Clean	55
Anna Kate Bowen, AEGIS-Michaud Properties	9	First United Methodist Church	49	PrimeSouth Bank	51
Answered Prayer Home Care	11	Holy Cross Episcopal School	26	Richardson's Pharmacy	8
Auburn Montgomery	35	ITEC	45	River City Church	63
Children's Clothing Exchange	35	Jack Ingram Motors, Inc	54	Saint James School	2
Cohens	7	Kingry Orthodontics	47	Southern Orthopaedic Surgeons	29
Davis & Copeland	55	The Maids	8	Tucker Pecan Company	27
Davis Direct	27	The Montgomery Academy	13	Women of Hope Support Group	26
Doug's 2 Salon & Spa	51	Montgomery Catering	23		



*While many things in our community have changed in the past 88 years, our focus has remained the same; the Junior League of Montgomery is dedicated to developing the potential of women, improving our community through the effective use of trained volunteers and promoting voluntarism.*



## President's Message

The Junior League of Montgomery is made up of women dedicated to their community. Over this past year, I have watched provisionals, actives, and sustainers give of their time, money, talents, and connections to help the League advance our mission. While many things in our community have changed in the past 88 years, our focus has remained the same; the Junior League of Montgomery is dedicated to developing the potential of women, improving our community through the effective use of trained volunteers and promoting voluntarism.

Our members who coordinated our fundraisers this year are amazing. They have given of their time and talents to make sure our events were successful. But the success of these fundraisers wouldn't happen if it wasn't for our members who give time to work at these events and our community who comes out to support our efforts. We saw increased attendance at most of our events this year. Our success at these fundraisers allows us to give back to our community through our grants process.

Thank you so much for the opportunity to serve as President of the Junior League this year. My journey in the League has been amazing and this year has been especially great as I am so proud of the things we have accomplished this year. I want to thank my Board of Directors for their support and all of you who have been encouraging and supportive to me this year. I couldn't have

done this job without all of you by my side. I'm honored to have worked with some amazing women. This organization has certainly helped develop the potential of me.

I specifically want to express my appreciation to a few people. Laura Stevenson, Sustaining Advisor, and Suzanne Davidson, Past-President, have both been great sounding boards and sources of strength this year. Jacque Foshee, our Donor Relations Director has finished her second year with us and several of our community sponsors have expressed that *this* has been their best year partnering with the League.

I'm excited for Ashley White, incoming President, and her year at the helm. I expect great things from her and have confidence she will be a great leader.

Thanks again for this opportunity and I look forward to continuing to serve my community.

Warmly,

A handwritten signature in dark ink, which appears to read "Laura Stevenson". The signature is fluid and cursive.

President  
Junior League of Montgomery

*one mission. one membership. one league.*





**We think  
DIY stores  
are terrific for  
picking up a  
couple bags of  
mulch and  
a lawn chair.**

But if you're looking for some of the best names in home appliances and electronics, there's really only one name you need to remember, Cohens. That's because all we eat, sleep, breathe and dream are home appliances and electronics. We can answer any question you might come up with. We offer some of the best prices in town. And we service what we sell. So if you're in the market for a leaf blower or a new pair of jeans, we're not your place. But if you're looking for quality home appliances and electronics, come to the place Montgomery's been coming for over 55 years now. We've got everything you need.


**Cohens**

*We deliver confidence.*



2515 Eastern Boulevard, Montgomery  
334-277-8890 • [www.thinkcohens.com](http://www.thinkcohens.com)



Weddings and  
Parties and Gifts...  
Oh, my!  
You need  
*Richardson's!*  
*Your* Pharmacy  
Gifts • Invitations  
Stationery  
*Rx and so much more!*  
1069 Woodley Road  334-262-5775

**IT'S TIME TO TAKE A**  
*vacation* **FROM CLEANING.**  
Give yourself a break, call the cleaning service  
most recommended to family and friends.

Proudly keeping homes cleaner  
and healthier since 1987  
**277-7749**  
[www.MAIDS.com](http://www.MAIDS.com)



Referred for a reason.

**ALABAMA**  
**RIVER REGION**  
*Ballet*  
**School & Youth Company**  
Priscilla Crommelin Ball, Executive Artistic Director  
Kyana Goodyear, School Director

Classes begin  
September 2!

Classes offered in Classical Ballet, Pre-Pointe, and Pointe. Additional classes are offered in Creative Movement, Children's Tap, Jazz, ages 2.5-18, and Adult Ballet, ages 18 and above.

**Telephone:**  
334-356-5460

**Email:**  
[riverregionballet@gmail.com](mailto:riverregionballet@gmail.com)

**Website:**  
[www.riverregionballet.com](http://www.riverregionballet.com)

**Festival Plaza**  
**7981 Vaughn Road**  
**Montgomery, AL 36116**







334-799-3597  
ingramak@gmail.com

**Prices are right, Interest rates are low!  
Make a smart move!  
Invest in Real Estate now!**

**Anna Kate Bowen**  
**2009, 2010, 2011, 2012, 2013**  
**Top Producing Sales Agent**  
**AEGIS-Michaud Properties, Inc.**



www.AegisMichaud.com

9



PIKE ROAD



**PREPARE TO BE IMPRESSED!**

Located on an acre +/- lot, this beautiful 5 BR, 3.5 BA home is in the coveted Noland Falls of Prattville. The island kitchen features a new Thermador gas cook top, double ovens, new dishwasher, SUB Zero fridge, granite & custom cabinetry. It has a huge laundry room. Wood floors accent the great room, dining rm & upstairs bonus rm. Deck overlooks large yard. \$369,000. Call Anna Kate at 799-3597.



**LOADED WITH UPGRADES & ENERGY EFFICIENT FEATURES**

Custom built, 3 BR, 3 BA builder's personal home. Wood floors in the great room w/ stone FP & island kitchen w/gas cook top, pot filler, granite counter tops, back splash & double pantries. HUGE master has a separate rm -can be used for study, work out rm or child's rm. Just off the south end of Hwy 231, it is convenient to Montgomery & Wetumpka! \$249,900. Call Anna Kate at 799-3597.



**LAKEFRONT LIVING MINUTES FROM TOWN!**

Kenny Hayes custom built home on 1.5 acre lot offers 4 or 5 BRS including a formal study & optional bonus rm w/full bath. Large great room w/15ft+ ceilings & extensive crown molding, gorgeous kitchen, breakfast room, sep. dining, large private master & covered back patio all over looking the lake! Go fishing, enjoy a sunset & relax w/this beautiful setting. \$389,000! Call Anna Kate @ 799-3597.



TOWNE LAKE



**THIS IS IT!!!**

Beautifully updated & upgraded in Halcyon Meadows! New roof & new wood floors. Fresh paint throughout! Granite counter tops & new appliances in the kitchen. Master suite is oversized w/den/sitting area & large walk ins. Dining area features new light fixtures, large great room & breakfast room. Fenced yard. 2 car garage! Located on a private cul de sac. \$179,000. Call Anna Kate at 799-3597.



**STOP & SMELL THE ROSES!**

This lovely 3 BR, 2 BA home is located off Carter Hill Rd just across from Rosemont Gardens. Bright & open, the living rm & separate dining rm have wood floors. Updated kitchen (fridge stays!) Large great room w/fireplace, new wood floors & great built-ins. Master has new wood floors & charming original tile in bath. Fully fenced, plus attached carport! \$135,500. Call Anna Kate at 799-4550.



**BETTER THAN NEW!**

Move-in ready with 2 inch blinds, large custom pergola, security system, sprinkler system, beautiful mature trees & landscaping, plus home is in immaculate condition. Floor plan offers separate dining room, large open kitchen with serving bar, bright breakfast room over looking backyard, large great room, spacious master, built in desk & two car garage! \$188,500. Call Anna Kate at 799-3597.



STURBRIDGE



EASTERN FOREST



**ENJOY PEACE & TRANQUILITY**

Located just 12 minutes from town this beautiful Pike Road property offers a gorgeous setting including a lake, wooded acreage in the back & nearly 10 acres to spread out on. Home offers a 2 car garage, bonus rm &/or 4th BR, large great room, huge kitchen & dining rm & a spacious master suite w/his & her walk in closets, separate dressing areas & sitting area. \$376,900. Call Anna Kate at 799-3597.



**HONEY STOP THE CAR**

Located at the corner of everything in east Montgomery, this charming 3 Br, 2 BA home has a large great room w/soaring ceilings, FP, open dining area & wonderful kitchen with pass thru. Third BR has been converted to study but can easily be converted back. Spacious master features a walk in closet. Spread out & relax in the sunroom. Backyard is just right! \$119,900. Call Anna Kate at 799-3597.



**IMMACULATE & MOVE IN READY!**

Located on a large cul-de-sac lot with sparkling pool, professional landscaping & mature trees. Located in Bell Meadows, the split floorplan offers 3 BR, 2 BA a separate dining rm with updated light fixtures, spacious great room with soaring ceiling & gas fireplace, a bright open kitchen with breakfast/serving bar, large utility room & abundant storage. \$174,900. Call Anna Kate at 799-3597.



DALRAIDA

**Call Anna Kate Bowen at 334-799-3597**



# Lisa Weil

## SUSTAINER OF THE YEAR

*By Jewell J. Dickson*



"If everyone would give just a little bit, our world would be an even better place to live."

—Lisa Weil

For the past 27 years, this motto has guided Lisa Weil in her commitment to the Junior League of Montgomery. Lisa was first introduced to the Junior League when her oldest son, Drew, presented a trophy at the Junior League Horse Show. After experiencing the graciousness and hospitality of the women she met, Lisa was invited to join the League in 1987, and so began an amazing journey.

Much of Lisa's involvement with the League has included development and fundraising. Her impact is most greatly felt at the annual Holiday Market. While working with Fund Development for the Holiday Market, Lisa found great pleasure in seeking contributions from area businesses because it gave her an opportunity to learn firsthand the impact that events like Holiday Market were making on her community. Her motto is, "If you don't ask, you don't get it, so it never hurts to ask!" This tenacity and commitment garnered Lisa the honor of being named one of the Sustainers of the Season in 2003. From her involvement with the League, Lisa has learned the most from the art of networking, getting along with others, and how to be a good listener. She feels that all of the women of the League are enthusiastic, smart, and have wonderful ideas. It has been her pleasure to see the organization grow and develop over the years and to see many of these ideas become a reality. Lisa's advice to current Junior League Actives: "Enjoy what you are

doing, even if it is not necessarily what you thought you were going to be doing, because you are making a difference in someone else's life. You are the better for it and they certainly are better off because you care."



Lisa's desire to do her part in making Montgomery a better place to live has extended to numerous organizations. She helped implement the Montgomery Ballet's first free performance of "Ballet and the Beasts" at the Montgomery Zoo to provide exposure to area citizens. She also assisted in the development of the first juried art show at Jubilee City Fest. Lisa serves on numerous community boards in Montgomery, some of which are the American Red Cross of Central Alabama, Alabama Shakespeare Festival, Family Guidance Center of Alabama, and Montgomery Garden Club. She is also actively involved with the Alabama Shakespeare Festival's Theatre Miracles Campaign Team, Clara Barton chairperson of the

American Red Cross of Central Alabama, the Family Sunshine Center annual fundraiser, Making Homes Safe Havens—"Playing for Hope and Healing," University of Alabama College of Communication and Information Sciences Board of Visitors, Camp Sunshine for Girls, Temple Beth Or Art and Decoration Committee Chair, Temple Beth Or Food Festival Sponsorship Co-



Chair, and for the past three years, the chair of the Temple Beth Or Sisterhood's Carnegie Deli cheesecake fundraiser.

Lisa continues to work as an Independent Consultant with Rodan and Fields Dermatologists; however, family is truly Lisa's greatest achievement. She has been married for 32 years to Adolph "Andy" Weil, III, who is a Director of AlaTrust, Inc., and River Bank and Trust, and they have three children. Their oldest son, Adolph "Drew" Weil, IV, a financial advisor with Merrill Lynch, lives in Birmingham and is married to Lauren (Sawyer), a realtor with LAH Realty. Their daughter, Amanda Weil Sokol, works for the Birmingham Jewish Federation, and is married to Kevin Sokol, a commercial realtor with Red Rock Realty in Birmingham. Dustin Kaufman Weil, their youngest son, graduated in May with a Bachelor of Arts in Advertising from Southern Methodist University. In her spare time, Lisa enjoys gardening, and growing fragrant roses and orchids. This is a tradition she inherited from her grandfather.

The motivation to serve comes from Lisa's family and her faith. From the very beginning, her parents, Harold and Joanie Blach of Birmingham, Ala., set an example of caring for others and giving of one's self, also called mitzvah, a core value of her Judaism faith. The example of doing good in the community continued from her in-laws, Jean and Bucks Weil, as well as her siblings whom she greatly admires. Due to his kindness and generosity, the person she admires most is her husband, who is also a loyal community volunteer. She feels that he has given her the inspiration to spread her wings and "reach for the sun, moon, and stars!"

When asked what she hopes her legacy will be, Lisa humbly states, "I can only hope that the work that I have done while being involved in the Junior League of Montgomery and this wonderful community will make life better. I hope I have been a good role model to others and that together we can make Montgomery an even better place to live and raise a family!" With the countless community and state agencies for which Lisa Weil has served, this goal is already becoming a reality.

*happy holidays!*

**Answered  
Prayer**

HOME CARE SERVICES

*When you need a helping hand.*

Answered Prayer Home Care Services' goal is to help our clients lead dignified, independent lifestyles in the comfort and safety of their own homes by carefully assessing and fully understanding their individual needs and selectively placing trained personnel to meet these needs.

## Company Services

- Errands
- Light Housekeeping
- Exercise Program
- Home Safety Evaluation
- Respite
- Medication Management
- Mental Health Assistance
- Meal Preparation
- AIDS Care Management
- 24 Hour Care
- New Mom Care/Infant Care
- Shopping Errands
- Nurse Visit
- Care Management
- Client Transportation
- Personal Care
- Chronic Disease
- Overnight Care Management
- Dementia Care Program
- Accompany to Physician Visits
- Fall Prevention Program



Your loved one can lead a dignified, independent lifestyle at home.

400 Interstate Park, Suite 415  
Montgomery, Al. 36109  
356-3911 office | 356-3944 fax  
[www.answeredprayerhomecare.com](http://www.answeredprayerhomecare.com)

## CONGRATULATIONS TO THE PROVISIONAL CLASS OF 2013-2014

# Welcome to the League!

Congratulations to the following women who persevered through their provisional year of membership and are now called Active members! We're so excited to see how you help us continue the mission of the Junior League of Montgomery!

Hollis Bosch

Jena DiPaolo

Holli Johnson

Ashley Penhale

Shannon Bowlin

Davita Duvall

Jessica Johnson

Vernetta Perkins

Christina Brown

Amanda Fallon

Allie Jones

Erica Pippins

Deniese Brown

Amy Floyd

Erica Lewis

Laura Rogers

Takisha Brown

Rebecca Fulks

Cheryl Lloyd

Sondra Sims

Erica Collins-Thomas

Marissa Gordon

Elizabeth Lyerly

Linda Ware

Georgia Conner

Kimberly Haynes

Amanda Mann

Vanessa Weatherspoon

Cecelia Cowart

DeAnna Henderson

Angie Martin

Kwan White

Caitlyn DeMouy

Kara Hendley

Brook Peavy

Carly Wilkins







## COLLEGE ACCEPTANCES 2014

81% of the 62 member Class of 2014 received merit-based scholarships totaling \$5.9 million.

With a  
**REMARKABLE**  
education, the  
opportunities  
are endless.

*Members of the Class of 2014  
were admitted to these  
colleges and universities.*

Auburn University  
Auburn University Montgomery  
Belhaven University  
Belmont University  
Birmingham-Southern College  
Brevard College  
Case Western Reserve University  
Clemson University  
College of Charleston  
Davidson College  
Dartmouth College  
Emory and Henry College  
Emory University  
Florida State University  
Fordham University  
Furman University  
George Mason University  
Georgia Institute of Technology  
Georgia State University  
High Point University  
Huntingdon College  
Indiana University  
King's College  
Louisiana State University  
Loyola University New Orleans  
Mercer University  
Millsaps College  
Mississippi State University  
Mount Holyoke College  
New York University  
Oxford College of Emory University  
Oklahoma State University  
Princeton University  
Purdue University  
Rhodes College  
Samford University

Savannah College of Art & Design  
Sewanee: University of the South  
Southern Methodist University  
Spring Hill College  
Texas A&M University  
Texas Christian University  
Troy University  
University of Alabama  
University of Alabama at Birmingham  
University of California, Davis  
University of Georgia  
University of Houston  
University of Illinois at Chicago  
University of Illinois at Urbana-Champaign  
University of Kentucky  
University of Louisiana at Lafayette  
University of Louisville  
University of Memphis  
University of Mississippi  
University of Mobile  
University of Montevallo  
University of New Orleans  
University of North Carolina at Chapel Hill  
University of North Carolina at Charlotte  
University of North Carolina at Wilmington  
University of Notre Dame  
University of Oklahoma  
University of South Alabama  
University of South Carolina  
University of Texas at Austin  
University of Tulsa  
University of Virginia  
University of Washington  
Washington & Lee University  
Western Kentucky University  
Wofford College



**THE MONTGOMERY ACADEMY**  
*The Pursuit of Excellence*

Contact Susannah Cleveland, Director of Admissions  
admissions@montgomeryacademy.org • 334.272.8210 • MONTGOMERYACADEMY.ORG

**FINANCIAL AID AVAILABLE**

The Montgomery Academy admits students of any race, religion, national or ethnic origin to all the rights, privileges, programs and activities generally accorded or made available to students of the school.

# FINAL GENERAL Membership Meeting

By Katy Sulhoff



The culmination of the Junior League year always comes down to one night—the final General Membership Meeting. It's a time to reflect on the past year, look ahead to the future, and celebrate the fruits of our labor by awarding grants to local non-profit organizations. The final General Membership Meeting is usually greeted with much fanfare and this year was no exception.

Outgoing President Dawn Stephens carefully selected the Episcopal Church of the Ascension in Montgomery's historic Garden District to conduct the League's final business of the year on May 13, 2014. The picturesque courtyard created an ideal setting for League ladies to enjoy social time over hors d'oeuvres and cool drinks on a particularly warm evening. After some time, League leadership encouraged ladies to proceed to the parish hall where the meeting would take place (always a challenge because League ladies do love to chat and catch up). President Stephens called the meeting to order and got right down the business. Members approved the previous minutes, voted on the 2014-2015 budget, and moved quickly to the focal point of the evening: grants and awards.

## Community Grants

The reason the League exists is to support and invest in the community. That's why League members work year-round to volunteer and raise money for a variety of causes in Montgomery, ranging from education and children's programs to women and health initiatives. The money raised from Taste of the River Region, Holiday Market, and the Shamrock Shuffle directly impacts the lives of children, men, and women in Montgomery. This year, the

League is proud to give **\$77,430 back to the community** in the form of grants.

## Sustainer of the Year

When Lisa Weil joined the League in 1987, she was looking for opportunities to volunteer in the community and network. She jumped right in and soon became instrumental in the long-range planning and development of the organization. "I don't mind being told no," Weil said, which was handy when the League counted on her to reach out to the community and raise money. Her commitment to service, dedication to the League, and demonstration as an exemplary volunteer are why she was named the 2013-2014 Sustainer of the Year. Nominating Committee Chair Jenny Thiessen described Weil as "a person who continues to fulfill the mission of the Junior League." The

announcement was a surprise, but Weil said she started getting suspicious when Thiessen was sent to pick her up for the meeting, "and I said, I'm too young for this! I am honored and touched. There are so many other women, so many deserving women." Her humble gratitude is the epitome of the League spirit, selfless service without expectation of recognition. Congratulations Lisa Weil, Sustainer of the Year!

The recipients of Junior League of Montgomery grants and new community placements for the 2014-2015 year are:

Brantwood Children's Home	\$12,000
City of St. Jude	\$16,100
Hope Inspired Ministries	\$13,560
Impact Alabama	\$5,000
Magic Moments	\$5,000
Medical AIDS Outreach	\$15,000
Montgomery Christian School	\$10,770









## Member and Placement Awards

Each year, the League identifies members with less than five years of service as the "Women to Watch." These up-and-comers have made their mark and caught the attention of League leadership. Congratulations to **Vanessa Weatherspoon, Emily Blades, Julie Spraggins, Michelle Roark, and Mitzi Cole!** One interesting fact that we discovered at the general membership meeting is that Vanessa, Julie and Michelle all attended the same high school, Our Lady Academy, in Bay St. Louis, Mississippi!

League members invested their hearts and countless hours into community projects throughout the year. Community placements are the cornerstone of the League's mission. One in particular

made a significant impact in the community. Membership Vice President Kimberly Baker announced **Life Time Resolutions** as **Community Placement of the year**. Life Time Resolutions is a holistic healing center for women. Also announced were:

**Community Placement Volunteer of the Year**  
Anne Ferrell Rhodes, Montgomery Christian School

**League Placement of the Year**  
Taste of the River Region

**League Placement Volunteer of the Year**  
Allison Bonds, Holiday Market





## Passing the Gavel

After an eventful meeting, the time came for the passing of the gavel. Outgoing President Dawn Stephens shared heartfelt remarks and graciously thanked her family and fellow members. "I'm amazed by the support, friendship, and love by the ladies in this room," Stephens said. "We pulled it off—y'all pulled it off."

The past presidents lined up in ascending order and carefully passed the gavel one at a time down the line until it fell in the hands of Ashley White, the 89th President of the Junior League of Montgomery. League members congratulated President White with applause and she shared her vision for the upcoming year. "With over 700 women in the League, our potential to make a

difference in the community is undeniable. In addition to fundraising and our work in the community, we will be revisiting our strategic plan for the year....This is a wonderful time to be involved in the League. The leaders before me paved the way to help this organization thrive. I am grateful to all of them and to you for this opportunity to serve."

And with that, League members took a breath...and got right back to working for the community.



# 2013-2014 Pacesetters

Thank you to the following for donating to the  
Junior League of Montgomery's Pacesetters Campaign.

## \$200+

Anonymous  
Leah Stephens <sup>PP</sup>

Crum Family Foundation  
Lisa Weil <sup>PP</sup>

## \$101-\$200

Ms. Lynda Borden

Sheri McKean <sup>PP</sup>

Sherry White

## \$51-\$100

Jean Belt <sup>PP</sup>  
Marcy Ingram  
Mrs. Kyle Kyser  
Susan Reed

Charlene Holtsford <sup>PP</sup>  
Dr. Melodie A. Jones  
Carol Loeb  
Mrs. Robert E. Sasser <sup>PP</sup>

Marilyn Hooper  
Mr. & Mrs. Richard L. Kohn <sup>PP</sup>  
Margaret Lowder  
Ann Winborne

## \$36-\$50

Wendy Anzalone  
Christine Cook  
Susan Patton <sup>PP</sup>  
Mr. and Mrs. Douglas Thiessen

Cheryl Baird  
Beth Dubina <sup>PP</sup>  
Gay Phillips <sup>PP</sup>  
Anne B. Upchurch <sup>PP</sup>

Patti Burke  
Cameron Freeman Napier  
LeCretia Snow

## \$35 and Under

Angie Ashcroft  
Shannon Bowlin  
Jodie Champion  
Laurel Floyd  
Mary Jane Guyton  
Melissa Johnson  
LeAnne Murphy  
Laura Rogers  
Ashley Tarrant

Mandy Bailey  
Melissa Bowman  
Daun Cioban  
Jenny French  
Jessica Hales  
Tamaya Knox  
Cassie Plunkett  
Nancy Seale  
Sonya Thompson

Allison Bonds  
Jennifer G. Brown  
Ruth Hutchinson Davis  
Helen Gary  
Anne Hamner  
Tammi Long  
Christy Rials  
Joy Stallings  
Anna Wilson

Anna Kate Bowen, *AEGIS Michaud Properties*  
Maureen Brown  
Cindy DeLongchamp  
Sandy Gayden  
Amanda Hayes  
Bethany McKee  
Michelle Roark  
Lisa Stevens  
Chacolby Burns-Johnson  
Shannon Ensley  
Marissa Gordon  
Kimberly Haynes  
Diane K. Mitchell  
Jennifer Rogers  
Molly Stone

## Honorariums/Memorials

In Memory of Virginia Belser (Leigh Anne Nevins)

In Memory of Mrs. Louise D. Larson (Mr. and Mrs. Richard L. Kohn )

In Honor of Dawn Stephens, President 2013-2014 (Michelle Mowery and Ashley White)

In Honor of Laura Stevenson (Dawn Stephens)

In Honor of Suzanne Davidson (Dawn Stephens)

In Honor of Sherry McKean (Dawn Stephens)

In Honor of 2013-2014 Board of Directors (Dawn Stephens)

<sup>PP</sup> Denotes Past President



# THANK YOU TO OUR Sponsors!

We appreciate all of our donors who contribute generously to the Junior League of Montgomery. With your donations, we are able to continue to give back to our community!

## Title Sponsor Baptist Health

### Gold

Beasley, Allen, Crow, Methvin,  
Portis & Miles, P.C.  
Blue Cross and Blue Shield of AL  
Gay Meadows Shopping Center  
Publix Super Markets, Inc.

### Silver

Alabama Power Company  
Loree & Owen Aronov  
AUM—Outreach  
Brewbaker Motors  
Dreamland BBQ  
McConnell Honda Acura  
New Park  
River Bank & Trust  
ServisFirst Bank  
Stivers Ford Lincoln Mercury

### Bronze

ALFA Insurance  
Associated Psychologists, LLC  
Cadence Bank  
Steve and Suzanne Davidson  
DJ At Large  
Harmon Dennis Bradshaw, Inc.  
Hyundai Motor Manufacturing Alabama, LLC  
Institute for Total Eye Care, P.C.  
Leigh Anne Nevins, DMD  
Sasser Sefton Brown Tipton & Davis PC

### Supporter

Alabama Artificial Limb  
& Orthopedic Service, Inc  
DR Horton  
Jackson Thornton

# THE 2ND ANNUAL Shamrock Shuffle

*By Erin Schovel Turnham*



On Saturday, March 15, 2014, the Junior League of Montgomery hosted the second Shamrock Shuffle 10K Race at Edward Thompson Ball Fields on Ray Thorington Road. Shuffling started at 7:30am and the weather was perfect!

In addition to the 10K race, the Shamrock Shuffle also consisted of a 2K "Fun Run." A standout feature of this race was inclusion of adaptive sports for persons with disabilities. More than 100 runners participated in Shamrock Shuffle and the Junior League raised almost \$10,000, which will be used to support community-based endeavors.

Nathanial Newton won the 10K race by completing the run in just 41 minutes. The full list of winners can be viewed on the Junior League website under EVENTS at [www.jlmontgomery.org](http://www.jlmontgomery.org).

For the second year, DJ At Large was the emcee for the event. After their run, racers enjoyed a party atmosphere courtesy of DJ At Large and relaxing massages from Virginia College. Publix of the Cornerstone Shopping Center provided a tent and packed it with healthy snacks and water for the participants, as they did last year. Nancy's Italian Ice offered contestants a colorful, frosty treat as well. Also for the second year in a row, New Park allowed race packet pickup at their office. Other snacks, beverages, prizes and giveaways were provided by event sponsors and community partners. Children also got in on the fun with face painting.

*A great big thank you goes out to this year's Shamrock Shuffle Committee for all of their hard work and dedication to the event.*

**Michaeline Fuller—Co-Chair**

**Wynn Dee Allen and Cindy DeLongchamp—Logistics Chairs**

**Tonda West—Philanthropic Chair**

**Joy Kaplan—Awards and Prizes Chair**

**Leslie Zeanah and Meg Fiedler—Entertainment Chairs**

**Laura Maxey—Registration Chair**

**Allison Bonds—Personnel Chair**

**Julia Henig—Media/Promotions Chair**

*Special thanks for all of their support to:*

**Dawn Stephens**

**Kara Cosby**

**Victoria Belton**

**Michelle Mowery**

**Jacque Foshee**

If you missed the run, but would still like to make a contribution, mail your donation to: Junior League of Montgomery, Attn: Shamrock Shuffle, Lazy Leprechaun, 3570 Carter Hill Road, Montgomery 36111.





## THANK YOU TO OUR GENEROUS SPONSORS!

### Thank You Vendor Partners!

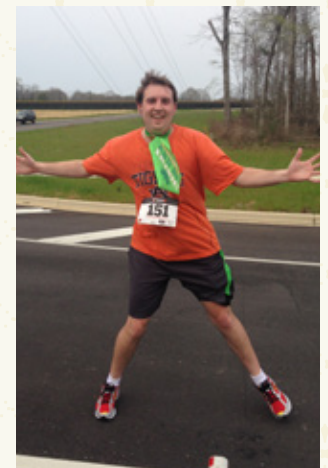
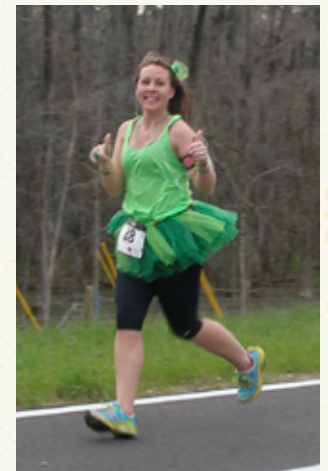
Advocare	Alabama Dumpster Service
Boosters Inc	City of Montgomery
Delta Printing	DJ At Large
Grandiose	Haynes Ambulance
Kwik Kopy	LogoBrander
Montgomery Automotive Group	Montgomery Biscuits
Nancy's Italian Ice	Publix
Steven Mackey Dermatologist	Virginia College
YMCA	

### Thank You Prize Donors!

Baptist Health	BioFreeze
BodyTrac Health & Fitness	Chantilly Veterinary Clinic
Chick-fil-A	Christian Brothers Automotive
Costco	Eastdale Mall
Fleet Feet Sports	Fresh Market
Gold's Gym	Montgomery Multisport
New Park	Palm Beach Tan
Spa Elia	

### Thank You Media Partners!

Al.com	Bell Media
Cumulus	Lamar Outdoors
River Region Living	WAKA
WSFA	







## TOP FEMALES OVERALL IN 10K DIVISION

MARY KATHERINE SKIPWORTH

Time: 49:15.95 Age:36

JULIE BLANKENSHIP

Time: 49:32.00 Age:40

JESSICA PITTS

Time: 50:50.31 Age: 30



## TOP MALES OVERALL IN 10K DIVISION

NATHANIAL NEWTON

Time: 41:45.81 Age: 25

CARTER CHANDLER

Time: 42:10.71 Age:13

WYATT FARACE

Time: 44:27.61 Age:14





Knowledge is profitable  
because wisdom gives life  
to those who possess it.

ECCLESIASTES 7:12

At Montgomery Catholic, our students flourish in a rigorous academic environment designed to fully develop their individual God-given gifts — while strengthening their lifelong walk in the Christian faith. Enroll now by calling 334-272-7221 ext. 32, or visit [www.montgomerycatholic.org](http://www.montgomerycatholic.org).



MONTGOMERY  
**Catholic**  
PREPARATORY SCHOOL

St. Bede Elementary Campus  
Holy Spirit Elementary Campus  
Middle School Campus  
High School Campus

**FAITH. EXCELLENCE. SERVICE. THIS IS CATHOLIC.**

[www.montgomerycatholic.org](http://www.montgomerycatholic.org)

*A City Tradition*



Call us today 269.0222 or visit our website!

Alabama Activity Center  
201 Dexter Avenue

RSA Plaza Terrace  
770 Washington Avenue

Commerce Center  
401 Adams Avenue



**MONTGOMERY**  
**CATERING**

MONTGOMERY CATERING, INC. | 334-269-0222 | [montgomery-catering.com](http://montgomery-catering.com)

# 2014-2015 JUNIOR LEAGUE Chairs Spotlight

24

By Jewell J. Dickson



Thank you to these ladies and their committee members for volunteering in each of these important areas of the Junior League. We look forward to another successful year!



**Jennifer Grant Brown**  
*Community Research  
Chair*

Jennifer Grant Brown is from Bethesda, Maryland and became a member of the League in 2007. She is married to Ronnie Brown and they have two beautiful daughters, Katie (8) and Anna (6). Jennifer works part time at Hands On River

Region, one of the League's partner non-profits, and runs the Christmas Clearinghouse program that helps families in need get "adopted" at Christmas. Jennifer will be serving as the Community Research Chairperson for 2014-2015. Her committee is responsible for receiving and reviewing applications from area non-profits who are applying to be selected as 2015-2016 League placements.



**Carrie Cauthen**  
*Provisional Chair*

Carrie Cauthen grew up in Prattville and joined the Junior League in 2010. She is married to Joey Cauthen and they have two beautiful children, Georgia (5) and Mack (4). She is a stay at home mom and works as an office assistant in her

husband's contracting business. Carrie will be serving as the Provisional Chairperson for 2014-2015. She and her committee will guide the provisional class through their first year of League participation. The goal is to use education, mentorship, and service to introduce the provisionals to all aspects of the League in preparing them for membership.



**Katie Richburg**  
*Placement Chair*

Katie was born in Auburn and joined the League in 2007. She is single and works for the Farm Service Agency as a Farm Loan Specialist. Katie will be the Placement Chair for 2014-2015. Her primary responsibility is to ensure that each member of the League has a placement and to help

in the resolution of any placement-related issues. One of the most important aspects of Katie's position is Placement Days, in which every member previews the upcoming year's community placement. This event will be held in March of 2015.



**Karen Herman**  
*Fund Development Chair*

Karen Herman was born in San Francisco and throughout her childhood traveled across the United States and Europe with her military family. Karen joined the League in 2008. She is married to David Herman and they have one daughter, Mallory, who works in

advertising and lives in Chicago. In January of 2013, Karen retired as the chief accountant for the State of Alabama Office of the Attorney General. Karen is serving as the Fund Development Chairperson for 2014-2015. She will be working with the Donor Relations Director and the Fundraising Council Vice-President to partner with businesses and individuals in our area. The purpose of this committee is to centralize the fundraising sources within our community to better support all outreach facets of the League.





**Shena Davidson**  
*College & Career Night*

Shena Davidson is originally from Cleveland, Mississippi. She joined the League in 2009. Shena is married to Gary Davidson and they have two beautiful children, D.J. (13) and Kennedy (8). She works for Regions Bank and serves as the Vice President/ Humans Resources Generalist. Shena

is the College & Career Night Chairperson for 2014. The 30th Annual College and Career Night is scheduled for September 15, 2014, at the Renaissance Montgomery Hotel & Spa at the Convention Center. Shena and her committee are planning for a record number of area students to learn about college and career opportunities.



**Becky Farace**  
*Taste of the River  
Region Chair*

Rebecca (Becky) Farace is from Fairfax, Virginia. She joined the League in 2010. Becky is married to Dave Farace and they have three beautiful children, Wyatt (14), Campbell (13), and Bodin (11). She teaches preschool at First United

Methodist Church. Becky is the Taste of the River Region Chairperson for 2014. The Taste of the River Region will be celebrating its 10th anniversary and she and her committee are collaborating with the Alabama Restaurant and Hospitality Alliance to make this event extra special. This is a wonderful fundraiser for the provisional classes and each class allows input in how the funds are utilized to help the community. The event will be September 28, 2014, at the Renaissance Montgomery Hotel & Spa at the Convention Center.



**Lindsey Jinright**  
*Holiday Market Chair*

Lindsey Jinright traveled across the United States as part of a military family. She lived in Florida, North Carolina, Japan, Washington, Virginia, Missouri, Georgia and Delaware before she settled in Alabama and joined the League in 2006. Lindsey is married to Bo

Jinright and the have a beautiful son, Charlie (2). She works as the Development Manager at the Alabama Shakespeare Festival. Lindsey will serve as the Holiday Market Chair for 2014. The Holiday Market is the League's largest fundraiser with approximately 10,000 people attending each year. Lindsey and her committee have already begun soliciting merchants, and are anticipating adding 30 new merchants this year, totaling more than 100. The event will be held October 16-18, 2014, at the Cramton Bowl Multiplex, near downtown Montgomery.



**Michaeline Fuller**  
*Shamrock Shuffle Chair*

Michaeline Fuller is from Millbrook. She joined the League in 2010. Michaeline graduated from the University of Alabama with a degree in elementary education and is in her sixth year of teaching at Coosada Elementary. She is single and loves Alabama football and

Braves baseball. Michaeline is the Shamrock Shuffle chair for 2015. She and her committee will be planning, organizing, and executing the race in March of 2015. This will be the third year for this event with plans to make it bigger, better, and more inclusive for all citizens in the River Region.



Childhood goes by in  
a moment. Make sure  
it's a teachable one.



HOLY CROSS EPISCOPAL SCHOOL PROVIDES A  
CHALLENGING ACADEMIC ATMOSPHERE IN A LOVING, CHRISTIAN ENVIRONMENT.

334-395-8222 • [www.holycrossmontgomery.org](http://www.holycrossmontgomery.org) • SACS ACCREDITED 4400 BELL RD • MONTGOMERY, AL 36116



FAITH • ACADEMICS • ARTS



PLEASE CONTACT US FOR MORE INFORMATION

334-220-4599

[womenofhope@charter.net](mailto:womenofhope@charter.net)

[thewomenofhope.org](http://thewomenofhope.org)

Facebook

## FREE SUPPORT

Women of Montgomery *Embracing  
and Nurturing Hope* of Prevention  
and Eradication of Breast Cancer

Women of Hope offers a support group meeting the 2nd Tuesday of each month free of charge to any breast cancer patient/survivor, caregiver, family member, friend, or anyone interested in becoming a part of this compassionate journey.

Frazer United Methodist Church, Room 8114 | 5:30 PM | Light Refreshments

We encourage you to bring a friend and join us as we pledge to give hope, promote healing and advance our community for the cause!

*Hope is the assurance that one day we will be able to live cancer free.*





Visit us Downtown—350 N. McDonough St.  
Monday–Friday 8am–4pm ☎ 334.262.4470

Don't forget the Pecans & Candies—Order Online  
**TUCKERPECAN.COM**

Take your party wherever the fun is happening.

CELEBRATE SUMMER WITH BRIGHT ACCESSORIES  
AND TOTES FROM TUCKER PECAN COMPANY.



FOLLOW US ON Facebook Get the latest news, specials and more!



Rewrite the law of supply and demand.

When demand for your marketing material is high, you need to be sure you've got an adequate supply and the means to distribute it. Davis Direct's comprehensive, fully customizable fulfillment service provides real-time inventory reports and tracking information so you can stay on top of your material.

Contact Davis Direct when it's time to get Ready. Print. Go >>



**davisdirect**

ready. print. go >>

1241 Newell Parkway, Montgomery, AL 36110  
Tel 334 277 0878 | Fax 334 277 2518  
davisdirect.net

## Alabama Dance Theatre Classes

1018 Madison Ave.

[www.alabamadancetheatre.com](http://www.alabamadancetheatre.com)

Kitty Seale,  
Artistic Director  
at the Armory  
Learning Arts  
Center

Age 3 to  
Professional

**241-  
2590**



Photography by David Robertson, Jr.

# One Small Act

*By Jeanie Parnell*



Have you ever wondered if you can really make a difference in the lives of those around you? Perhaps you have wondered if your vote matters, if your generosity is noticed, or if your kindness even helps. I believe all of these things make a difference, because I believe that everything we ever do matters.

Think about how harmful even the smallest acts of cruelty, dishonesty, and disloyalty can be. Consider how even small remarks can be incredibly hurtful. If one mean remark or cruel comment can cause such pain, what can a compliment do? Is it just as powerful?

There is something called the butterfly effect which theorizes that a hurricane can be caused by one butterfly flapping its wings just once, weeks before, on the other side of the world. This sounds ridiculous, but the truth is that even a tiny movement of air moves other particles of air, creating a sequence of events that can escalate and eventually lead to a hurricane. This theory was initially laughed at in scientific circles (and possibly even by you reading it just now!), but it has been proven possible.

If one tiny act of a butterfly's wings can create such mayhem, and one unkind remark can be so harmful, what can one small act of kindness do? Can one small act of kindness generate a storm of goodness? Can it help create a better day for someone,

a happier afternoon, a relief, a reminder of love and kindness? Can it help negate the bad?

The Junior League of Montgomery aims to find out. We have allocated \$1000 specifically earmarked for random acts of kindness in our community. Our members are giving them out as opportunities arise, and it is our hope that it will start something big; something good and loving and kind. We want to improve someone's day, make someone smile, and help someone see the good in the world. We want to continue our mission to improve our community; we want to promote goodness. Women at the Junior League of Montgomery know that even the smallest actions matter; that everything we do makes a difference, and we want to make a difference in the lives of those around us.

I believe in random acts of kindness. Do you? Be on the lookout for something that changes your day, something that makes you smile, something that lightens your burden. And if you can, pass it on!



# Commemorative Giving

The Junior League of Montgomery has been creating large and small acts of kindness since 1926. You can help the League to continue making a difference in the community by honoring a special person who has enriched your life through a tax-deductible gift to The Junior League of Montgomery.

In Honor of (Name) \_\_\_\_\_

In Memory of (Name) \_\_\_\_\_

Please send an acknowledgement card to (Name) \_\_\_\_\_

Address \_\_\_\_\_ City/State/Zip \_\_\_\_\_

Signed \_\_\_\_\_

Please send a confirmation card to (Name) \_\_\_\_\_

Address \_\_\_\_\_ City/State/Zip \_\_\_\_\_

Please make checks payable to The Junior League of Montgomery, 3570 Carter Hill Road, Montgomery, AL 36111

**Accidents** and sports injuries can happen any time...  
even after regular business hours.

When they do, finding  
**immediate,  
expert care**  
is critical.

Southern  
Orthopaedic  
Surgeons

Montgomery's only urgent care center specializing in orthopaedics now offers speedy, specialized after-hour care as an alternative to crowded ERs and long wait times. Now open Monday-Saturday at our new building located at 454 Taylor Road, just 1 mile north of I-85. All ages are treated and no appointments or referrals are needed.

[www.sos-ortho.com](http://www.sos-ortho.com) • 334.613.9000

**Urgent Ortho**  
at Southern  
Orthopaedic  
Surgeons *llc.*



SUPPORTING  
OUR  
COMMUNITY

# Sponsorship Opportunities

## MAKING AN IMPACT

The Junior League of Montgomery has been serving the Montgomery area for 88 years. We have volunteered and financially contributed over three million dollars to organizations since our inception in 1926.

Because of our emphasis on volunteer hours and Request for Proposal format for financial contributions, the Junior League is the perfect partner for your company or agency's charity dollars. We can do the work for you and show our appreciation by showcasing your company or agency at our highly attended and respected fundraisers.

Even in these tough economic times, the Junior League of Montgomery is donating over \$70,000 and \$435,000 worth of volunteer hours to the

following organizations in 2014-2015:

- Brantwood Children's Home
- City of St. Jude
- Hope Inspired Ministries
- Impact Alabama
- Magic Moments
- Medical AIDS Outreach
- Montgomery Christian School

We want to partner with companies in the River Region to have a larger impact on our community in both funds given and in volunteer hours. We need your help to have that impact.

Please carefully consider how your company or agency can join the Junior League of Montgomery in providing a better community for future generations.

[www.jlmontgomery.org](http://www.jlmontgomery.org)

TO LEARN MORE, CONTACT

**The Junior League of Montgomery is a registered 501(c)(3) organization. Gifts are tax-deductible.**

Junior League of Montgomery  
Jacque Foshee • Donor Relations Director  
334.288.8816 • [jacquefoshee@jlmontgomery.org](mailto:jacquefoshee@jlmontgomery.org)



## FUNDRAISING & COMMUNITY EVENTS

The dramatic success of the League's annual fundraisers has made possible a financial commitment to the Montgomery area that has totaled well over a million dollars in the last ten years alone. These fundraisers include:

### HOLIDAY MARKET

Since 1989, Holiday Market has been a Fall staple. With more than 100 merchants, Holiday Market has more than 10,000 shoppers coming to Montgomery each year. Holiday Market is considered a must for most Christmas and Holiday shoppers. This is a great sponsorship opportunity to get your company's name out to a large number of people who are primary purchasers.

### TASTE OF THE RIVER REGION

Since 2010, JLM has partnered with the Alabama Restaurant and Hospitality Association to host Taste of the River Region. This fundraiser showcases local restaurants at the Renaissance downtown. We have more than 700 attendees and approximately 40 restaurants and suppliers on hand for this fun event. This is a great sponsorship opportunity for companies that work with restaurants and other hospitality companies. This evening can be a perfect welcome or thank you for new employees or customers.

### RUMMAGE SALE

Starting in 1952, the JLM Rummage Sale sells gently used clothes and household goods. We have more than 1,200 attendees during our 2-day sale. This is a great sponsorship opportunity for companies that have missions to help the needy in the tri-county area.

### SHAMROCK SHUFFLE 10K RUN

Starting in 2013, the JLM hosted our first 10K run. We are seeking sponsors to partner with us in making this a yearly professional and fun family event that reaches all of the River Region. The sponsorship opportunities are widespread for this event.

### COLLEGE & CAREER NIGHT

Since 1985 JLM has hosted this event for high school students and their parents. Colleges, universities, technical schools and military organizations have tables with representatives to help these 2,500 students and parents find scholarships for furthering their education. Financial aid seminars are held. This is a great sponsorship opportunity for companies that need a strong labor force in the Montgomery area and an excellent opportunity to showcase a company's internships, scholarships and work program opportunities.



Proceeds raised by the Junior League of Montgomery support our work in the community through projects that improve the quality of life for families and children.

Through partnerships with corporate and community leaders, we are helping to make Montgomery a better place to live and work.

## SPONSORSHIP BENEFITS

ALL DONORS RECEIVE printed name recognition on donor wall at Holiday Market, TORR, College & Career Night, Shamrock Shuffle and Rummage Sale, as well as printed name recognition in Junior League of Montgomery publications, on Junior League of Montgomery website and on social media. Sponsorship must be received on or before August 15 to be guaranteed inclusion in fall Junior League publications. Please note not all events are held every year.

SPONSORSHIP	DONATION	HOLIDAY MARKET		TASTE OF THE RIVER REGION		COLLEGE & CAREER NIGHT
		Preview Party Tickets	Gen. Adm. Tickets	Tables (for 10)	Gen. Adm. Tickets	Magazine Advertisement
		Attendance: 400	Attendance: 10,000	Attendance: 700		Attendance: 2,500
Grand Investor	\$20,000	40	60	2	-	Full Page Ad
Title Investor	\$15,000	30	50	2	-	Half Page Ad
Premier Investor	\$10,000	16	30	1	-	Half Page Ad
Gold Investor	\$5,000	8	20	1	-	Quarter Page Ad
Silver Investor	\$2,500	6	10	1	-	Quarter Page Ad
Bronze Investor	\$1,500	4	4	1	-	
Supporter	\$500	2	4	-	4	

SPONSORSHIP	DONATION	SHAMROCK SHUFFLE	RUMMAGE SALE	LEAGUE LOGS MAGAZINE	EDUCATIONAL TRAINING SESSION
		Runners	Gen. Adm. Tickets	3 Times/Year	By Request
		Attendance: 500	Attendance: 700	Circulation: 4,000 +10% Discount on Additional Ads	Attendance: 20-50 Members Limited to 4/Year
Grand Investor	\$20,000	20	20	3 Full Page Ads + Feature	1
Title Investor	\$15,000	15	15	2 Full Page Ads + Feature	1
Premier Investor	\$10,000	10	10	Full Page Ad	1
Gold Investor	\$5,000	8	8	2 Half Page Ads	1
Silver Investor	\$2,500	6	6	Half Page Ad	
Bronze Investor	\$1,500	4	4	Quarter Page Ad	
Supporter	\$500	4	4		

## SPONSORSHIP FORM

Date \_\_\_\_\_

Company Name \_\_\_\_\_

Contact Name \_\_\_\_\_

Address \_\_\_\_\_

City \_\_\_\_\_ State \_\_\_\_\_ Zip \_\_\_\_\_

Phone \_\_\_\_\_ Email \_\_\_\_\_

☐ \$20,000 Grand Investor ☐ \$500 Supporter☐ \$15,000 Title Investor ☐ \$250 Patron☐ \$10,000 Premier Investor ☐ \$100 Friend☐ \$5,000 Gold Investor☐ \$2,500 Silver Investor☐ \$1,500 Bronze Investor☐ Other: \_\_\_\_\_

☐ Check here if you do NOT wish to receive any benefits of tickets for your sponsorship. You will still be recognized in JLM publications.

☐ I wish for my gift to be anonymous.

WE WOULD LIKE OUR ANNUAL GIFT TO SUPPORT

☐ Holiday Market ☐ Shamrock Shuffle☐ Taste of the River Region ☐ Rummage Sale☐ College & Career Night

Indicate Desired Area(s) of Recognition:

\_\_\_\_\_

\_\_\_\_\_

## PAYMENT OPTIONS

☐ Check or money order (payable to Junior League of Montgomery)☐ Please charge my: ☐ Visa ☐ MasterCard ☐ American Express

Card Number \_\_\_\_\_ Exp. \_\_\_\_\_ Security Code \_\_\_\_\_

Name \_\_\_\_\_ Signature \_\_\_\_\_

Return completed form with gift to: Jacque Foshee, Donor Relations Director,  
Junior League of Montgomery, 3570 Carter Hill Road, Montgomery, AL 36111



## AREAS OF RECOGNITION

In addition to the benefits, you may choose from below up to your donation amount. The opportunities are first come and first choice is given to previous year sponsor.

### HOLIDAY MARKET

- |   |   |
|---|---|
| ■ Grand Investor: \$20,000                | <ul style="list-style-type: none"> <li>• Recognition as the top sponsor on publicity &amp; promotions</li> <li>• Opportunity to include ad on the brochure given to 10,000 attendees</li> <li>• Opportunity to tailor program to suit your marketing needs</li> </ul> |
| ■ Title Investor: \$15,000                | <ul style="list-style-type: none"> <li>• Recognition as a high level sponsor on publicity &amp; promotions</li> <li>• Opportunity to tailor program to suit your marketing needs</li> </ul>   |
| ■ Preview Party & Silent Auction: \$5,000 | <ul style="list-style-type: none"> <li>• Recognition on publicity and promotions</li> <li>• Recognition on brochure given to 10,000 attendees</li> <li>• Recognition on Preview Party tickets</li> </ul>  |
| ■ Girls' Night Out: \$5,000               | <ul style="list-style-type: none"> <li>• Recognition as evening sponsor on publicity and promotions</li> <li>• Recognition on brochure given to 10,000 attendees</li> </ul>   |
| ■ "How to" Seminars: \$5,000              | <ul style="list-style-type: none"> <li>• Recognition on publicity and promotions</li> <li>• Recognition on signage at seminar location</li> <li>• Recognition on brochure given to 10,000 attendees</li> </ul>  |
| ■ Ticket Sponsor: \$2,500                 | <ul style="list-style-type: none"> <li>• Company listed on General Admission tickets</li> </ul>   |
| ■ Street Sponsor: \$2,500                 | <ul style="list-style-type: none"> <li>• Recognition on sign in exhibit hall</li> <li>• Recognition on map in the brochure given to 10,000 attendees</li> </ul>   |
| ■ Wrap/Info Booth: \$2,500                | <ul style="list-style-type: none"> <li>• Recognition by Gift Wrap &amp; Information booth in exhibit hall</li> </ul>  |
| ■ Café: \$2,500                           | <ul style="list-style-type: none"> <li>• Recognition listed by Café at the entrance to exhibit hall</li> </ul>  |
| ■ Santa's Workshop: \$1,500               | <ul style="list-style-type: none"> <li>• Recognition by Santa's workshop</li> <li>• Recognition on the brochure given to the 10,000 attendees</li> </ul>  |
| ■ Sustainers' Art Booth: \$1,500          | <ul style="list-style-type: none"> <li>• Recognition as sponsor at entrance to popular Sustainers' Art Booth</li> </ul>   |
| ■ Lanyard Sponsor: \$1,500                | <ul style="list-style-type: none"> <li>• Recognition on Lanyards worn by 300+ vendors for 4 days</li> </ul>   |

### SHAMROCK SHUFFLE (DOES NOT OCCUR EVERY YEAR)

- |                                  |  |
|----------------------------------|--|
| ■ Name Sponsor: \$10,000         | <ul style="list-style-type: none"> <li>• Recognition as the top sponsor on all publicity &amp; promotions</li> <li>• Opportunity to tailor program to suit your marketing needs</li> </ul> |
| ■ Bib Sponsor: \$5,000           | <ul style="list-style-type: none"> <li>• Recognition on the bibs for the 500+ runners</li> </ul>   |
| ■ 2K Sponsor: \$5,000            | <ul style="list-style-type: none"> <li>• Listed as sponsor for the 2K race on promotion &amp; publicity</li> </ul>   |
| ■ Start Line Sponsor: \$2,500    | <ul style="list-style-type: none"> <li>• Recognition on the banner at the Start line</li> </ul>  |
| ■ Finish Line Sponsor: \$2,500   | <ul style="list-style-type: none"> <li>• Recognition on the banner at the Finish line</li> </ul>   |
| ■ Packet Pickup Sponsor: \$2,500 | <ul style="list-style-type: none"> <li>• Runners come to your location for packet pickup for 2 days prior to event</li> </ul>  |
| ■ Water Stop Sponsor: \$500      | <ul style="list-style-type: none"> <li>• Opportunity to decorate and staff a water station (6 available)</li> </ul>  |

### COLLEGE & CAREER NIGHT

- |                             |  |
|-----------------------------|--|
| ■ Name Sponsor: \$5,000     | <ul style="list-style-type: none"> <li>• Recognition on publicity &amp; promotions</li> <li>• Recognition in Guide given to 2,500+ students, parents, college representatives</li> </ul> |
| ■ Refreshments: \$1,500     | <ul style="list-style-type: none"> <li>• Signage recognition at dinner for college representatives</li> </ul>  |
| ■ Breakout Sponsor: \$1,500 | <ul style="list-style-type: none"> <li>• Signage recognition at breakout seminar</li> </ul>  |

### RUMMAGE SALE (DOES NOT OCCUR EVERY YEAR)

- |                           |  |
|---------------------------|--|
| ■ Name Sponsor: \$5,000   | <ul style="list-style-type: none"> <li>• Recognition on promotion &amp; publicity</li> </ul>     |
| ■ Preview Party: \$2,500  | <ul style="list-style-type: none"> <li>• Recognition on promotion &amp; publicity</li> </ul>     |
| ■ Ticket Sponsor: \$1,500 | <ul style="list-style-type: none"> <li>• Company listed on tickets to 1,500 attendees</li> </ul> |
| ■ Moving Company: \$2,500 | <ul style="list-style-type: none"> <li>• Recognition on promotion &amp; publicity</li> </ul>     |

### TASTE OF THE RIVER REGION

- |   |
|---|
| ■ Sponsorships in conjunction with Alabama Restaurant & Hospitality Association. Contact JLM for details. |
|---|

# UPDATE FROM THE Provisional Class

*By Mary Margaret Carroll*



The 2013-2014 Junior League of Montgomery's provisional class had a successful year. Their important involvement in many of the League's activities directly exposed them to the fundraising operations, administration, and direct community service efforts in Montgomery and the surrounding area.

In September 2013, the provisional class kicked off their year with its annual fundraiser, Taste of the River Region, a relatively new tradition that has become increasingly popular each year. The Taste of the River Region unites the League with the Alabama Restaurant Association to host a showcase of local food at the Renaissance Hotel and Convention Center. This past year, 30 local eateries and caterers offered their most delicious dishes and signature items for ticket-holders to sample during a night of fellowship and fun. A range of vendors were present such as Casa Napoli, a Wetumpka favorite known throughout the region; Super Suppers, the casserole connoisseur; and Liger's Bakery, a Montgomery staple. New institutions Chicken Salad Chick and Cupcakes by Tish also participated. Revenue generated from booth and ticket sales allowed the provisional class to award two grants of \$2,500 each. One grant was awarded to Dream Court, Inc., a non-profit partner of the City of Montgomery. The program introduces tennis to promote physical activity for physically-disabled individuals, with the objective of improving the quality of life for those individuals. The other recipient was

Child Protect of Montgomery, which provides one-on-one support to victims of various forms of child abuse, and advocates on behalf of those victims.

This provisional class is the first class in the history of the Junior League of Montgomery to be involved with all *three* of the League's major fundraisers—**Holiday Market**, **Rummage Sale**, and the **Shamrock Shuffle**—during their inaugural year in the League. The three unique events provided each provisional with a close-up opportunity to learn how the League works, while building relationships among those in their class. More importantly, they were able to meet and interact with active members who could offer advice and counsel on their experience.

Additionally, the ladies visited the Montgomery Area Council on Aging offices and pantry to better understand its operations, to provide an example of what a Junior League "signature project" looks like. This visit was instrumental in helping the provisionals make their service placement choices for the coming year.





# CHILDREN'S CLOTHING EXCHANGE

SHOP MONTGOMERY'S FINEST  
CONSIGNMENT EVENT SALE

**The sale is held every February and September**

Find incredible values on children's clothing (including smocked & trunk show items), as well as shoes, toys, furniture and baby equipment; also women's purses, jewelry and accessories

Home furnishings too from kitchen items and home décor to small electronics and furniture

**Become a consignor and make some money!**

Owners Heidi Pruett & Anne Tippet invite you to join the mailing list by going to the website,  
[www.childrensclothingexchange.com](http://www.childrensclothingexchange.com)

## AUM.edu



**SURROUNDED  
BY FACES**



**SURROUNDED  
BY FRIENDS**

**Don't want to be a face in the crowd  
at one of those giant universities?**

At Auburn Montgomery you'll find an easy campus vibe that promotes friendship and getting to know one another. And smaller classes with hands-on learning mean you'll get to know your professors better too. So why compete for attention when you don't have to? Call us today and plan your campus visit to see why AUM is a better choice.

WHERE LEARNING MATTERS MOST  **APPLY NOW 334-244-3615**

**NOW ENROLLING FOR SPRING CLASSES!**





# SAVE THE DATE FOR Holiday Market

Who's making a list and checking it twice? Smart shoppers...that's who! One of Montgomery's biggest shopping events is already in the planning stages so be sure to mark it on your calendar.

Thursday, October 16th from 9am-9pm

Friday, October 17th from 9am-9pm

Saturday, October 18th from 9am-5pm

Located at the Cramton Bowl Multiplex,  
220 Hall Street, near downtown Montgomery

*Tickets go on sale in September!*

Tickets are \$5 in advance and \$10 at the door

Get a sneak peek and jump start  
on your shopping by attending the  
*Preview Party & Silent Auction*

Wednesday, October 15th 6-9pm  
(Auction ends at 8pm)

Tickets are \$40

This event attracts almost 10,000 people and raises approximately \$150,000 for the Junior League of Montgomery to support community projects each year. In 2013, Holiday Market included 126 merchants. This year, over 30 merchants have already signed up, including 30 new ones! Vendors who are interested in participating may sign up at [www.jlmontgomery.org](http://www.jlmontgomery.org). Merchants and individuals interested in donating items for the Silent Auction can email [holidaymarket@jlmontgomery.org](mailto:holidaymarket@jlmontgomery.org).

Tickets will be available at the Junior League office,  
3570 Carter Hill Road and other locations [to be announced.]





## PLACEMENT SPOTLIGHT

# Montgomery AIDS Outreach

By Joyce Loyd Davis



Montgomery AIDS Outreach (MAO) is a non-profit organization serving individuals living with HIV/AIDS. The organization services over 1,000 patients living in Montgomery and surrounding counties.

MAO has been a vital part of the community, offering medical services, counseling, social service support and nutritional assistance. They have an established food pantry, which provides supplements to their clients' grocery supply.

The Junior League of Montgomery has partnered with MAO for the last two years to offer volunteer assistance with their food pantry project. This year, a committee of 31 members, chaired by Christine Cook, provided over 475 volunteer hours to make the food pantry a success. Junior League volunteers stock the pantry, organize supplies, and pack boxes for the MAO clients to pick up each week. These boxes contain nutritional items that patients should use to supplement their own household grocery supply. Produce is provided as well, and given in a cold bag to protect the freshness. This also works as a great incentive for the client to return to MAO for their regular check-up.

The MAO committee began their work June 1, 2013, and continued until May 31, 2014. This placement is uniquely operated year-round to provide this service. Christine Cook has two co-chairs and they organize the group according to their schedules to provide hours in quarterly intervals. However, the entire committee meets quarterly to share experiences, ideas and thoughts relative to the project. Christine also indicated this is just a good time to meet everyone and engage in the team spirit to complete the project. Christine states, "A testament to the placement itself is the same people signing up again for the placement next year. This speaks volumes to the servitude spirit that committee members possess after their experience. We are serving a population of people in need and making a difference in their lives."

MAO has been very pleased with the success of the food pantry and the relationship with Junior League. MAO recently hired a manager to oversee the food pantry, which is available Monday through Friday, with extended hours on Wednesday. The Junior League also helps provide the food for the boxes, which is purchased from the Food Bank. Christine notes that this has been a great partnership between all entities involved to make the food pantry a success. It often takes many people, organizations, groups and leaders working together to yield optimal outcome of any project. The synergy of all parties involved in this project is a fine depiction of producing the optimal results.

Thank you to Committee Chair person, Christine Cook, co-chairs Julia Schneider and Susan Hunt and committee members:

Sheena Allen  
Amanda Seals Bersinger  
Rebecca Boykins  
B.B. Burnett  
Shannon Ensley  
Monica Gailles  
Keina Houser  
Keyosha Jones-Shuford  
Tamara Knight-Fleming  
Tina Nixon  
Danita Rose  
Kristen Ryan  
LeCretia Snow  
Casey Thornton

Angie Ashcraft  
Meredith Bishop  
Kay Brummal  
Belle Cauthen  
Laura Eubank  
Elizabeth Hawke  
Gina Izer  
Melody Kitchen  
Tamaya Knox  
Michelle Patterson  
Deise Russell  
Tondra Shambray  
Melinda Stallworth  
Christa Wren



2014-2015

# Board of Directors

PRESIDENT ASHLEY WHITE



Ashley Killian White is the President of the Junior League of Montgomery for 2014-2015. She is originally from Birmingham, and moved to Montgomery after graduating from Auburn University and Cumberland School of Law. She is married to Nowell White and they have a daughter, Killian Adams White, who is 7 years old, and a son, Cooper Thomas White, who is 3 years old.

Ashley currently works as a senior staff attorney for Judge Beth Kellum on the Alabama Court of Criminal Appeals. She is a

graduate of Leadership Montgomery, Class XXVI, serves on the Leadership Montgomery Board of Directors, serves on the Advisory Council of the Family Sunshine Center, and also serves on the Advisory Board for the Landmarks Foundation.

Ashley has previously served as President of the Family Sunshine Center Board of Directors, as Chair of the 2013 Bazaar D'Art fundraiser for the Montgomery Museum of Fine Arts and as a member of the Live Auction committee for the Montgomery Museum of Fine Arts. She has also served as a member of the Board of Hands On River Region.

In 2010, Ashley participated in the Alabama Leadership Initiative and in 2011 completed a training course with the Nonprofit Board Leadership Institute. In 2012, Ashley received the Estelle Popkin Volunteer of the Year Award for her work with the Family Sunshine Center.

Ashley and her husband are members of First United Methodist Church where Ashley has served on the Children's Council. In addition to church activities, Ashley enjoys volunteering in the community, family walks, traveling, and spending time with friends.

Since joining the League in 2002, Ashley has served as a volunteer for Rebuilding Together and MACOA. She has also served on the Arrangements Committee, the Holiday Market steering committee, as chair and co-chair of both the Community Research committee and the Placement committee, as well as Operations Council Vice President. Before serving as President-Elect, Ashley served on the Junior League Board of Directors as the Community Council Vice President.





President-Elect  
**KIMBERLY BAKER**

Kimberly Baker grew up in Philadelphia, Penn., and has her Bachelor of Science degree from Auburn University. Kimberly is married to Benjamin E. Baker, Jr., a shareholder at Beasley Allen. They have three children: Isabella (12), Benjamin (10) and Liam (4).

Kimberly has served the Junior League in many different areas. She has been the Membership Vice President, Nominating Vice President, Member at Large, as well as served on Community Research, Membership Council and Fund Development Committees. She has chaired and co-chaired Taste of the River Region. Kimberly has volunteered with and chaired various placements throughout the years such as Medical Outreach Ministries, DHR Back to School, ClefWorks and Brantwood Children's Home.

In her spare time, Kimberly serves on the Medical AIDS Outreach Advisory Board, Hands On River Region Board, Montgomery Music Project Advisory Board, and is the past president, vice president, outreach chair and artistic chair of the ClefWorks Board of Directors. She is a USTA tennis captain and volunteers at her children's school.

Kimberly attends Christchurch where she volunteers as a Sunday School teacher and VBS volunteer. She enjoys running, any kind of exercise, and spending time with family and friends.



Recording Secretary  
**MITZI COLE**

Mitzi Cole, originally from Madison, Wisconsin, relocated to Montgomery in 1999. Mitzi serves as the Director of Human Resources for the United Methodist Children's Home, and celebrated her ten-year anniversary in May 2014. She received her master's degree in Human Resource Management from Troy State University and her bachelor's degree in Communication Arts from the University of Wisconsin – Madison.

A member of the Junior League of Montgomery since 2009, Mitzi has served as the chairman for the Impact Alabama placement and on the Membership Council. She has just completed serving as the board of directors as Corresponding Secretary. She has completed Impact Alabama and Taste of the River Region placements. Mitzi was recognized as one of the League's "Women to Watch" during our May 2014 general meeting.

Outside of the League, Mitzi has been an active member of Alpha Kappa Alpha Sorority, Incorporated® for sixteen years. A member of the Montgomery Chapter since 1999, she currently serves as the Corresponding Secretary, Protocol chairman and chairman of the Ivy Foundation. She recently began service to the River Region United Way as a member of their Board of Directors.

In her spare time Mitzi enjoys going to the gym, reading and shopping. Mitzi has a husband, Lawrence Cole, and a son, Lawrence Timothy 'Clay' Cole.





Finance Council VP

**AMY BURNS**

Originally from Meridian, Miss., Amy graduated from the University of Alabama with an Accounting degree, and from the University of Alabama at Birmingham with a Masters of Accountancy. She has lived in Montgomery for 13 years.

Since joining the League in 2006, Amy has served in many areas including College & Career Night and Impact Alabama. She has served on the Finance Council for the past three years, working as Assistant Treasurer and League Logs Business Manager.

Amy and her husband, Clarke, have one son, Anderson (7). They attend First United Methodist Church where they actively serve in various areas. When she is not working or spending time with family, Amy enjoys reading, sewing, traveling and playing tennis.



Community Council VP

**JENNIFER ROGERS**

Jennifer Bolen Rogers is a graduate of Louisiana Tech University, where she received her Bachelor of Arts degree, and she received a Masters of Education from Auburn Montgomery. Jennifer's past work within the League includes serving on the Board of Directors as Member at Large, Placement Chair, and Community Research. Other League positions include Bloomingdeals Committee and Chair, Holiday Market Committee and Tickets Chair, Group Homes for Children, and Decorator Show House.

Jennifer notes that one of her greatest joys about being part of the League is getting to know so many wonderful women in the community. While serving in the League, she has witnessed the mission of developing women and promoting volunteerism first hand. Each year she continues to be impressed by the talented and smart women who volunteer with the League. Their dedication and service inspire so many.

Jennifer's husband, Brian, is an Assistant Manager at Hyundai Motor Manufacturing. Jennifer is currently working at home with their three children: Samuel, Harrison and Frances Ann. Jennifer and Brian enjoy travelling with their children, especially to New Orleans for Mardi Gras every year. Jennifer enjoys cooking, reading works from Southern writers, and spending time with friends and family.





Communications Council VP  
**VICTORIA BELTON**

Victoria is a native of Montgomery, and is a 2004 graduate of the University of Alabama where she received her degree in Marketing and Advertising. Currently, Victoria is the Marketing Director for the Montgomery Area Transit System (MATS), which provides fixed route and para-transit service within the city limits.

Victoria joined the league in 2010 and has served on the Communications Council since 2012. During her time with the Communications Council, she has managed publicity for Taste of the River Region (2012 and 2013) and Shamrock Shuffle (2013 and 2014). During the 2013-2014 year, Victoria was the Publicity Chair for the League. In addition to serving with the Communication Council, Victoria also worked with the Montgomery Area Campaign to Prevent Teen Pregnancy, and Brantwood Children's Home placements. In addition to Junior League, Victoria is actively involved with several community organizations in Montgomery. Presently, she serves as Vice President of Projects for the Public Relations Council of Alabama. Victoria is also the Marketing and Communications Committee Chair for the River Region United Way and she serves on the Hands on River Region Board. Victoria is a graduate of the 2009 inaugural EMERGE Torchbearers Leadership Class. During her time with EMERGE she served as the Marketing Committee Chair and Secretary. She also worked on the planning committees for the LEAD Summit Young Professionals Conference and the Young Professional of the Year Award.

Victoria is also a member of Alpha Kappa Alpha Sorority, Incorporated, Beta Nu Omega Chapter, where she is serving as Publicity Chair. When she can find a little spare time, Victoria likes to read, shop and dabble with photography!



Fundraising VP  
**MICHELLE MOWERY**

Born within the shadow of the Rose Bowl in Pasadena, California, and raised a Yellow Rose of Texas, Michelle George Mowery came to Alabama for the first time as a student at the University of Alabama. As a member of Pi Beta Phi, she capped her time at the Capstone by winning the Southeast Regional Competition for Collegiate Ad Teams, and attended The National Competition with The Alabama Ad Team. Michelle graduated with Honors in 1999 with a degree in Public Relations and Communications. She began her career in Public Relations in Atlanta with a job at global top 5 firms Golin-Harris and Ketchum Public Relations.

While attending the wedding of a pledge sister, and fellow board member Mandy Bailey, Michelle met her future husband David. Michelle and David decided to settle in Montgomery, where she continued her work for CIBA Vision, A Novartis Company, and he started a thriving political consulting and public relations firm, The Mowery Consulting Group.

In 2009, Michelle gave birth to their first son Matthew George, who was joined by his little brother Davidson Mays in 2012. She continues her career as a salesperson with two children under five, because of her passion for the job, her clients, and a desire to set a strong example for her children and the children of Montgomery who come in contact with the programs of the Junior League. Michelle continues her career in the field of medical sales with Alcon Vision Care.

Michelle joined the League in 2006, and was swiftly brought into the fold via placements with Holiday Market and Media Relations. In 2011, she expanded her purview into Fund Development, and along with partner, Jacque Foshee, has brought a newfound results-oriented solicitation process, and with it record funding for the League.





Membership Council VP  
**FELICIA LONG**

Felicia Long will serve as the Membership Council Vice President for 2014-2015. Felicia is from Montgomery and practices law with Hill, Hill, Carter, Franco, Cole, & Black, P.C., representing clients in a variety of civil litigation and insurance defense matters.

Felicia's past Junior League placements include Operations Council Vice President, Governance Chair, the Holiday Market Steering committee (Secretary, Gift Wrap chair, and Food Solicitations chair), the Bridge Builders committee, and the S.T.E.P. Ballet Foundation committee. In the community, Felicia serves on the Board of Directors for the Metro YMCA, Board of Directors for the Britton YMCA (former chairman), Board of Directors for the Jimmy Hitchcock Memorial Award (past president), Board of Directors for the Red Cross, and Board of Trustees for Frazer United Methodist Church. She is also on the Board of Directors for the Montgomery County Bar Association, where she chairs the bar association's annual charity event. Felicia enjoys coaching student teams who participate in Alabama's Youth Judicial Program each year, which provides high school students an opportunity to learn about the judicial branch of government through the preparation and presentation of a mock case.

Felicia is married to Bobby Long, who is an Equity Analyst at Retirement Systems of Alabama. They have a Yorkshire Terrier named Samson, and enjoy traveling and the outdoors.



Operations Council VP  
**JENNY FRENCH**

Jenny French is a native of Birmingham. She attended Auburn University for two years and graduated from the University of Alabama at Birmingham with a Bachelor of Science Degree in Nursing. Jenny moved to Montgomery in August of 2007 and is currently a stay at home mom to her four children.

Jenny just completed her year as Recording Secretary. She has chaired the MACOA placement and the Arrangements Committee. She has also served in the community as a member of Montgomery-Autauga-Elmore County Medical Alliance. She attends St James United Methodist Church, where she is an active volunteer for VBS and the Youth Department. Jenny is also very active in her children's schools serving as Room Mother and a Chair on the PTO.

Jenny is married to Stan French, a radiologist with Montgomery Radiology Associates. They have four children, Lauren (13), Hayley (10), Morgan (6), and Luke (5) who attend Trinity Presbyterian School. Besides taking care of her children, Jenny enjoys cooking, traveling, reading, attending Auburn football games, and the company of good friends.





Nominating Chair  
**JENNY THIESSEN**

Jenny Thiessen and her husband Doug moved to Montgomery in 2007 from Lubbock, Texas. Jenny graduated with a B. A. in History from The University of Texas at Austin. She worked as an Office Manager for a law firm in Lubbock. Currently, her passion is to serve her new community as a volunteer. She volunteered as a docent at the Montgomery Museum of Fine Arts, where she also chaired the 2011 Bazaar d'Art. Jenny served on the birdhouse committee for the Family Sunshine Center's 2012 Making Homes Safe Havens. Jenny currently serves on the River Region Council for Magic Moments and on the Board for ClefWorks.

Jenny recently received the "Women to Watch" award from her peers in the Junior League. She has previously served on the Board of Directors as Communications Council VP. She has participated in many placements, including Nominating Committee Co-Chair, *League Logs* editor and co-editor, *League Lines* co-editor, IMPACT Alabama, Holiday Market Publications and Set-up Chair, League Logs staff writer and Camp Smile-A-Mile.

Jenny and Doug attend Frazer United Methodist Church. When she's not volunteering in the community, Jenny enjoys reading, shopping and exploring Alabama and the Southeast.



Governance Chair  
**KELLI WISE**

Kelli Wise, a native of Geneva County, spent her childhood in Daleville, and her teenage years in Prattville. She graduated from Auburn University with a degree in Biology/Nursing. Kelli received her JD from Jones School of Law and also holds a Masters of Public Administration from Auburn Montgomery. She was elected to the Alabama Court of Criminal Appeals in 2000 and served as Presiding Judge until her election to the Supreme Court of Alabama in 2012.

Kelli joined the Junior League of Montgomery "too many years ago to remember" and has served on various committees including Teen Court, Child Protect, Meals on Wheels, Public Affairs Chair, Holiday Market Decorations Chair and Preview Party Chair, Rummage Sale Steering Committee, MANE, Community Research Co-Chair /Chair and Communications Council VP. She is active in the community, serving on the Family Sunshine Center Board of Directors, MAX Credit Union Board of Directors, Vintage Affair Committee, Museum of Fine Arts Bazaar d'Art and Art Auction committees, Alabama Juvenile Justice Task Force, and various professional and political organizations.

Kelli is married to former Montgomery County District Court Judge Arthur Ray, who is originally from Huntsville and currently serves as legal counsel for the Alabama Department of Labor. They are the proud parents of Hanah-Mathis, a rising 9th grader at St. James School. The family attends St. James United Methodist Church where Kelli has taught Sunday school and Vacation Bible School. In her free time, Kelli enjoys spending time at the lake and Jordan-Hare stadium.





Advisory/Strategic Planning Chair  
**LARA WILSON LEWIS**

Lara Lewis is originally from Montgomery and graduated from Auburn University with a degree in Public Relations/Communications. She is married to Hunter Lewis, who is a Sales Associate for SYSCO of Central Alabama. She and Hunter have a son, Wilson "Pierce" (2) and a four-legged baby, a miniature schnauzer named Moxley (8).

Lara currently works as the Vice President of Marketing and Membership for the YMCA of Greater Montgomery where she provides internal strategic consulting expertise on association-wide marketing, membership and communication activities. She provides vision and direction to the branding and marketing communications and serves as administrator of all strategies to achieve membership development, membership sales and retention, and corporate membership leads.

Lara is a graduate of EMERGE Torchbearer's Leadership Class I, and currently serves as the President of the State Public Relations Council of Alabama. She has previously served as past President of the Montgomery Chapter of the Public Relations Council of Alabama, as a member of the Alabama Shakespeare Armchair Auction Committee, and as a member of the Montgomery Symphony League.

Lara and her husband are members of First Baptist Church in Montgomery where they serve the preschool ministry together.

Since joining the League in 2007, Lara has served as a volunteer for the Boys and Girls Club and as the co-chair of Bloomingdeals Rummage Sale, but has spent most of her time as the public relations chair for several years. Lara most recently served on the Junior League Nominating Committee for the past two years.



Member-at-Large  
**MANDY BAILEY**

Mandy Wright Bailey grew up in Shelbyville, Tennessee. She attended the University of Alabama and graduated with a Bachelor of Science degree in Psychology. After moving to Montgomery in 2000, she pursued her studies at Auburn Montgomery where she graduated with a Masters in Public Administration with a certification in Healthcare Administration and Policy. She currently works full time as a Women's Health Account Manager for Solstas Lab Partners.

Mandy joined the Junior League of Montgomery in 2003, and has served on various committees including: Fund Development, Back to School Shoppers, Bloomingdeals (Personnel Chair), Decorator Showhouse (Personnel Chair), Community Research, Nominating Committee and Holiday Market (Chair, Personnel Chair, Preview Party Chair, Merchant Co-Chair). An active member of First United Methodist Church, she teaches the three-year old Sunday School class and serves as one of the church's wedding coordinators. She sits on the Board for the Ascension Day School, serving as Secretary and is also involved as the Pi Beta Phi Alum ACRIC for the Montgomery area.

Mandy is married to Justin Bailey, a lobbyist with the Alabama Association for Justice. They have two children, Maggie Clark (4) and Jack (6 months). Mandy enjoys spending time with her family, traveling, volunteering at her children's school, and is an avid University of Alabama football fan.





Sustaining Advisor  
**SUZANNE DAVIDSON**

Suzanne Davidson grew up in Opelika and graduated from Samford University with a degree in Public Administration. She also holds a Masters in Public Administration from the University of Alabama at Birmingham.

Suzanne's past Junior League experience includes placements with Medical Outreach Ministries and the Janice Capilouto Center for the Deaf. She has served as Fund Development Chair and Co-Chair, Fundraising Council Vice President, Membership Council Vice President, President Elect and President. Suzanne attends First United Methodist Church where she has served on the Administrative Board and as Chair of the Fall Bazaar. She is a past President of the Montgomery-Autauga-Elmore Medical Alliance and is President of the Board of the Children's Museum of Alabama. She has also served on the Board of Hands on River Region.

Suzanne is married to Stephen Davidson, an oncologist at the Montgomery Cancer Center. They have two children, Wyatt (14) and Lela (9). Suzanne loves spending time at Lake Martin with her family, playing tennis and reading.



**Institute for Total Eye Care. P.C.**

Your  
**TOTAL  
EYECARE  
FACILITY**



Roy T. Hager, M.D., F.A.C.S. James D. Izer, M.D.  
Charles N. Robbins, M.D. Richard M. Murphy, O.D.

We offer complete services from comprehensive medical eye examinations, diagnosis and treatment of medical and surgical eye and lid disease and disorders, prescription glasses and contact lenses as well as LASIK and facial cosmetic surgery to include BOTOX.

**MONTGOMERY** 4255 Carmichael Court North  
334.277.9111  
**WETUMPKA** 8007 U.S. Highway 231  
334.567.9111  
1.800.255.3012 • [www.eyes-itec.com](http://www.eyes-itec.com)

# Books ON THE Nightstand

Compiled by Marcy L. Ingram

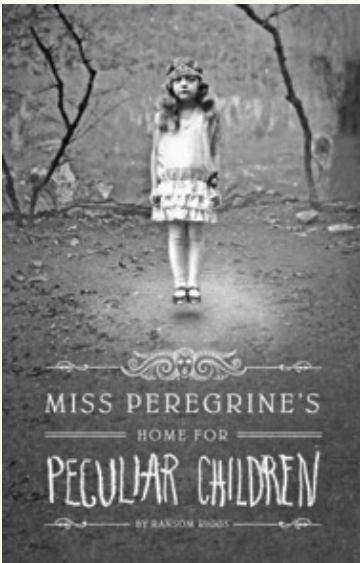


This edition of Books on the Nightstand features six diverse books that are courtesy of four Provisional members of the League, so read over their bio information and get acquainted with each lady! Writing this article this year has truly been a

pleasure for me. As an avid reader, I have enjoyed the books reviewed and the League members who shared their reviews of each. Getting to know what inspired them to read certain books or how a book affected their lives has been gratifying.

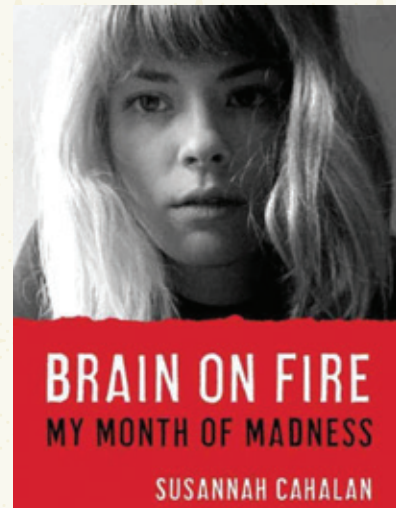


**Allie Jones** is a stay at home mom of two daughters, ages 11 and 8, and has been married to Damon Jones for almost 15 years. She worked at ALFA Insurance for 14 years, but left in 2012 to take care of her father who has Alzheimer's. Her hobbies include entertaining family and friends, and volunteering at her children's school. Allie also volunteers and participates in fundraising and educating the public about CHARGE Syndrome.



*Miss Peregrine's Home for Peculiar Children* by Ransom Riggs

What caught my eye in the bookstore were the actual photos this book contains, and the story is excellently written. The story is set in modern day; Jacob finds a "loop" in a crumbling house that takes him back to World War II where he finds these peculiar children who relive the day the house was bombed (think of the movie Groundhog Day). Jacob discovers he is "peculiar" too, when he learns he can sense the bad creatures that are after the children for their hidden abilities. I enjoyed this book so much that I was at the bookstore to purchase *Hollow City: the Second Novel of Miss Peregrine's Peculiar Children*, on the day it was released!



*Brain on Fire: My Month of Madness* by Susannah Cahalan

Susannah Cahalan was a reporter for the New York Post before her brain started to deteriorate and she began to lose her memory. She was twenty-four years old when she developed an autoimmune disease. Through the help of her family, boyfriend and a wonderful doctor, Dr. Najjar, the problem was identified and treated with surgery and antibiotics. As part of her trying to put all the pieces back together, she researched all her medical records, her diary and her father's journal to write this book. I could not put it down; I read it in a record four days!





**Ashley Penhale** is an attorney at the law office of Copeland, Franco, Screws & Gill where she has worked for the past five years. Ashley loves her job because she can help people on a daily basis, often during difficult situations. She received her undergraduate degree at Troy University and she attended law school in Montgomery. Ashley is the middle child in her family and has one older brother and one younger brother who both live in Birmingham. Her hobbies include volunteering, working in her garden and playing with a two-year old niece. Ashley passed the Georgia Bar exam in February 2014.

*Bossypants* by Tina Fey

I have always preferred reading biographies and autobiographies because I love learning about other people, their life experiences, and how those experiences have shaped their lives. For that reason, *Bossypants* is the perfect combination of two things I love: biographies/ autobiographies and Tina Fey. Though *Bossypants* is less of an autobiography than I anticipated, it is every bit as entertaining as I hoped. I have always enjoyed Tina Fey's sarcastic, witty, sassy sense of humor, and *Bossypants* is no exception to her humor.

I, like most people, don't usually have hours upon hours of uninterrupted time to leisurely read; so, I particularly appreciated that the chapters in *Bossypants* are really more like a series of short stories. This makes the book

easy to read, even if you only have a few minutes. Fey uses her own life experiences as a platform to discuss issues such as institutionalized sexism, female body image and diversity; but, she does so by using humor to lighten the conversation on subjects that are often otherwise difficult to discuss. On the subject of diversity, Fey says, "Only in comedy, by the way, does an obedient white girl from the suburbs count as diversity." I also especially related to Fey's stories about the male-dominated field of comedy—it's no secret that the practice of law is also a male-dominated field. For instance, Fey humorously explains that, "Some people say 'Never let them see you cry.' I say, if you're so mad you could just cry, then cry. It terrifies everyone."

Fey also devotes a chapter to lessons learned from Lorne Michaels, Saturday Night Live creator and writer, one of which I found particularly applicable to my own work. Fey says that, "The show doesn't go on because it's ready; it goes on because it's 11:30." Fey further explains that, "It's a great lesson about not being too precious about your writing. You have to try your hardest to be at the top of your game and improve every joke you can until the last possible second, and then you have to let it go." For a perfectionist, type-A personality like myself, Fey's words serve as a reminder to me to give all that I can to my work, but to also learn to let it go.



## Creating Smiles For Life!

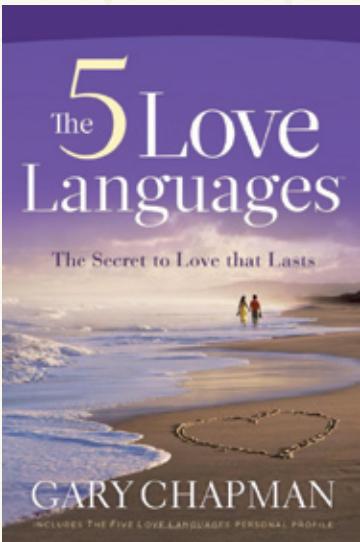
Kingry Orthodontics  
8101 Seaton Place Suite A  
Across from Peppertree Center  
**334.272.4900**  
kingryorthodontics.com

**Kingry**  
orthodontics, p.c.  
G. Mark Kingry, D.M.D.



**Christina Brown** recently graduated from Auburn Montgomery with a Master's Degree in Education Counseling. She finished her internship at Montgomery Catholic Preparatory School at the end of May. She currently teaches K-4 in the St. James School Extended Day Program. Christina is in pursuit of a career in the counseling field and will be getting married this December!

*The Five Love Languages*  
by Gary Chapman



In the book, Gary Chapman reveals how people express love in different ways: quality time, words of affirmation, gifts, acts of service or through physical touch. This book provides a key to understanding the needs of each individual. This understanding allows one to be able to express his or her love and feel truly loved in return. *The Five Love Languages* has made a significant impact on how I deal with those close to me and how I interact with others on a daily basis. During my daily routine at work, I come across many unique individuals. In order to create an empathetic relationship with others, I have found that understanding the different love languages one expresses allows for a deeper understanding in connecting with others.

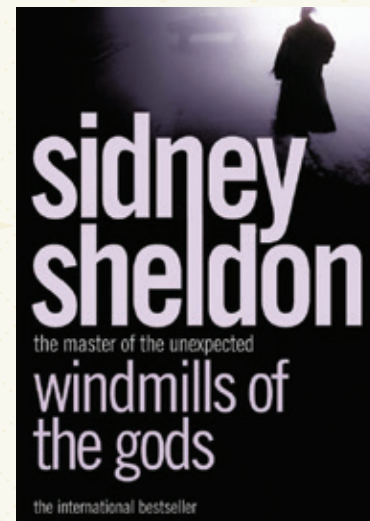
*One Thousand Gifts* by Ann Voskamp



This book was given to me by a dear friend two years ago. This book calls for you to release your control and abandon yourself to God, who leaves your cup overflowing with blessings. Voskamp writes of her own moments of grace and teaches you how to turn your pain into blessings. She also shows you how to create a lifestyle of radical gratitude, and how to catch God in moments of our hurried daily routines. *One Thousand Gifts* was given to me during a time I was searching for direction in my education, career and relationships. I learned to stop and be content in whatever situation I found myself, whether it was good or bad. It taught me how to perceive things and turn them into praises. This helped change my attitude and how I now see things in my life and daily routine.



**Brook Peavy** is a native of Auburn, Ala. At Auburn University, she received her B.A. in Public Relations and met her husband of two years. Brook and her husband have lived in Montgomery for a year, and she has been an Account Executive with Group Management Services for the past three years. When Brook is not reading, she enjoys golf, traveling and time with friends and family.



*Windmills of the Gods* by Sidney Sheldon

The President of the United States calls on Professor Mary Ashley, who is a widow, mother of two, and small town professor, to become the United States Ambassador in Romania. She has never left Kansas and has definitely never been involved in politics. I like to pattern my life around strong women, and this book is inspiring because it shows true female heroism, as Mary Ashley gracefully jumps into a high-power job while still being a caring mother and maintaining her values.





FAULKNER UNIVERSITY PRESENTS AN EVENING WITH  
**Dr. BEN CARSON**  
2014 BENEFIT DINNER | OCTOBER 2  
MONTGOMERY RENAISSANCE  
CONVENTION CENTER  
Purchase your tickets today!  
**faulkner.edu**  
**386-7257**



Faulkner University  
A CHRISTIAN UNIVERSITY



*First United*  
METHODIST CHURCH

Sunday Morning Worship Services  
8:45 & 11 am

Chapel Service & Holy Communion  
Wednesdays | 5:30 pm

View live stream of Sunday services at  
[www.fumcmontgomery.org/livestream](http://www.fumcmontgomery.org/livestream)

Dr. R. Lawson Bryan | Senior Minister  
2416 W. Cloverdale Park Montgomery, AL 36106  
334.834.8990 [fumcmontgomery.org](http://fumcmontgomery.org)

Join us in September for our  
185<sup>th</sup> Anniversary celebration!





# Mark Your Calendar!

Junior League of Montgomery Upcoming Dates to Remember!



August 19  
1st Provisional Meeting  
6:30 pm



September 9  
General Membership Meeting  
6:30/7:00 pm  
  
Day Meeting 11:30 a.m.



September 15  
College and  
Career Night  
6:00-8:00 pm



September 28  
Taste of the  
River Region  
6:00-8:00pm



Check the League  
calendar for upcoming  
Education and  
Training events.



October 15  
Holiday Market  
Preview Party  
6:00 pm



October 16-18  
Holiday Market  
at the Multiplex  
9am-9pm



November 11-12  
General Membership  
Speak Up Meetings  
Time to be Announced



December 11  
12th Day of Giving  
5:30-7:00





# PrimeSouth BANK


Helping Families Since 1958.

Thank you to the many customers and friends who helped us make an impact in our communities!

During our "Make an Impact" community service project, PrimeSouth Bank employees gave nearly 60 hours of time, touched 750 lives in the community and gave a total of \$5600 to the organizations they served.

Tallassee | Wetumpka | Pike Road

[www.primesouthbank.com](http://www.primesouthbank.com) | (334) 387-1655

Member FDIC 



# smashbox

C O S M E T I C S

*exclusively at*



**DOUG'S 2  
SALON - SPA**

8131 Vaughn Road • 334-396-7120



# 2014 Sustainer Luncheon

*By Cindy DeLongchamp*



Each spring, the Junior League of Montgomery hosts its annual Sustainer Luncheon to honor the special ladies who continue to support the League after their many years of community service. Volunteers can earn the honor of sustainer status after actively serving the League for ten years, and then continuing financial support through annual dues.

This year, to thank these ladies for their ongoing patronage, the League Relations Chairwoman, Carmen McCullough, enlisted the help of hostess Betty Bobbitt Byrne, who graciously opened up her beautiful Wynlakes home on April tenth to welcome the group.

Betty Bobbitt, a former president of the Junior League of Montgomery and current sustainer, called in a favor to Mother Nature, who provided the most spectacular afternoon of sunshine and perfect temperatures for the guests. President Dawn Stephens, president-elect Ashley White, and Jacque Foshee, donor relations director, greeted the ladies as they arrived. The guests filed in, one after the other, dressed in their lively spring colors, passing by two stunning fresh-flower wreaths that adorned Betty Bobbitt's front doors. Leatherwood Nursery provided not only the wreaths intertwined with yellow and lavender daisies, but also lovely Grecian urns that were overflowing with colorful flowers and greenery on the back patio. Betty Bobbitt's open concept home allowed the visitors to roam indoors and outside with ease. Ashley Miller, of Ashley Miller Design, provided floral centerpieces for the outdoor tables draped in white tablecloths, as well as inside the home. The color palette included bright coral accents on the napkins and cups which coordinated with the lilies, roses and tulips in the floral arrangements.

Maria Hill, Junior League sustainer and owner of the catering company, the King's Creations, prepared a tasty and beautiful menu for the day. The ladies were offered their choice of a delicious southern mint tea punch, citrus water or white wine for

their refreshments, which were served alongside Maria's signature cheese lace wafers. The soft buzzing sound of old friends catching up with each other was quieted only when hostess Betty Bobbitt officially welcomed the guests and offered a prayer before lunch. For the main course, Maria Hill prepared Mediterranean chicken pasta with herbs, artichokes, olives and sun-dried tomatoes along with a mixed green salad with fruit and honey-ginger lime dressing. A medley of asparagus, green beans, honey carrots and stuffed squashed along with warm yeast rolls completed the buffet. The tiered dessert tray included bite-sized lemon tarts, pecan pies, apricot squares and triple chocolate brownies.

As the luncheon wrapped up and sustainers began to depart, Molly Stone, editor of the Junior League newsletter, *League Lines*, thanked each guest for attending and gave everyone a parting gift of a blueberry-lemon loaf from Louisa's Bakery, individually wrapped in a bright pink box. Former placement chair of the League and current Junior League sustainer Diane Chappell noted as she left, "This was such a nice day! We had a charming setting, delicious food and wonderful fellowship with caring and lovely friends."

**Sustainers who attended the luncheon included** Beverley Amberg, Sheila Babcock, Cheryl Baird, Carol Ballard, Bonnie Gay Bear, Jean Belt, Lynn Beshear, Carolyn Bowman, Beverly Broach, Mary Lou Brown, Betty Bobbitt Byrne, Gypsy Capell, Marcia Chambliss, Jodie Champion, Diane Chappell, Mae Cohen, Heather Coleman, Elizabeth Crum, Katherine Crum, Laura Crum, Ruth Davis, Marnie Dillon, Beth





Dubina, Patty Franco, Anne Freeman, Tina Gamble, Lulie Grant, Julie Green, Ashley Hamlett, Anne Hamner, Maria Hill, Stacey Hill, Carol Hodges, Jan Hodgson, Sharon Hubbert, Vera Jordan, Elizabeth Killingsworth, Anne Kimzey, Cookie Knott, Donna Knox, Trish McLaney, Mary McLemore, Margaret McNeill, Cameron Napier, Leigh Anne Nevins, Susan Patton, Gay Phillips, Ivy Pittman, Judy Rigdon, Millie Rocheleau, Carolyn Sasser, Jean Schloss, Nancy Seale, Jennifer Seymour, Bonnie Shanahan, Joy Stallings, Laura Stevenson, Pam Stevenson, Amy Strickland, Dianne Teague, Paulette Thompson, Karen Vinson, Clare Watson, Sally Wilder, Vickie Wilson and Sharon Windham.







## Five incredible cars, one incredible buying opportunity. The Mercedes-Benz Summer Event.

### The 2014 GLK 350

**\$419\***  
FOR A 36 MONTH LEASE

\$419	FIRST MONTH'S PAYMENT
\$3,399	CAPITALIZED COST REDUCTION
\$795	ACQUISITION FEE
\$4,613	CASH DUE AT SIGNING

**2.99%\*\* APR**  
FOR 24 TO 72 MONTHS

Offer Ends July 31, 2014

Right now is the best time to finally get the Mercedes-Benz you've always dreamed of. Take advantage of exceptional Summer Event offers on the stunning CLA, the exhilarating C-Class, the versatile GLK, the innovative E-Class or the protective M-Class. All incredible vehicles that helped make Mercedes-Benz the 2014 ALG Residual Value Award Premium Brand winner. Hurry—there are so many choices, but so little time. See your authorized Mercedes-Benz dealer today. [MBUSA.com/SummerEvent](http://MBUSA.com/SummerEvent)

Summer Event



Mercedes-Benz

Jack Ingram Motors, Inc.  
227 Eastern Blvd., Montgomery, AL  
(334) 274-4900

Optional equipment shown. \*Available only to qualified customers through Mercedes-Benz Financial Services at participating dealers through July 31, 2014. Not everyone will qualify. Advertised 36 month lease payment based on MSRP of \$41,855 less a suggested dealer contribution resulting in a total gross capitalized cost of \$40,206. Dealer contribution may vary and could affect your actual lease payment. Includes Destination Charge and Premium 1 Package. Excludes title, taxes, registration, license fees, insurance, dealer prep and additional options. Total monthly payments equal \$15,084. Cash due at signing includes \$3,399 capitalized cost reduction, \$795 acquisition fee and first month's lease payment of \$419. No security deposit required. Total payments equal \$19,278. At lease end, lessee pays for any amounts due under the lease, any official fees and taxes related to the scheduled termination, excess wear and use plus \$0.25/mile over 30,000 miles and a \$595 vehicle turn-in fee. Purchase option at lease end for \$23,857 plus taxes (and any other fees and charges due under the applicable lease agreement) in example shown. Subject to credit approval. Specific vehicles are subject to availability and may have to be ordered. See participating dealer for details. \*\*Rate applies only to select Mercedes-Benz Model Year 2014 vehicles. 2.99% APR financing for 24 months at \$42.98 per month, per \$1,000 financed, 2.99% financing for 36 months at \$29.08 per month, per \$1,000 financed, 2.99% APR financing for 48 months at \$22.13 per month, per \$1,000 financed, 2.99% financing for 60 months at \$17.96 per month, per \$1,000 financed or 2.99% financing for 72 months at \$15.19 per month, per \$1,000 financed. Excludes leases and balloon contracts. Must take delivery of vehicle by July 31, 2014. Not everyone will qualify. ALG is the industry benchmark for residual values and depreciation data. [www.alg.com](http://www.alg.com). ©2014 Authorized Mercedes-Benz Dealers

For more information, call 1-800-FOR-MERCEDES, or visit [MBUSA.com](http://MBUSA.com).



Bill Davis  
Jane Albright  
Leslie Sellers  
Staci Rogers  
Susan Cowart  
Phelps Reid  
Ed Webb  
Missy Mathis

# Davis & Copeland Realtors

2815-A Zelda Road • Montgomery, AL 36106  
Tel: 334.244.0550 • [www.davisandcopeland.com](http://www.davisandcopeland.com)

*Put your company  
in front of our  
vast audience!*

Through advertising, we are able to share with a broader audience our mission of helping families by spotlighting the many community agencies that we support. And our broader audience means more reach for your company! Contact us today to see how you can place an ad in League Logs.

**Contact**  
CARMEN STEGALL McCULLOUGH,  
ADVERTISING MANAGER  
334-396-2276 :: Fax: 334-288-8944 ::  
[CEStegall@aol.com](mailto:CEStegall@aol.com)

*Providing exceptional floor care  
services to central Alabama for  
over 25 years!*

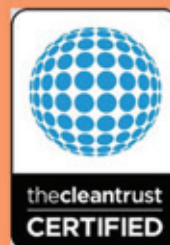


Call today **(334)277-6937** or visit us

On the web

***www.PeachesNClean.com***

- \*CARPET \*TILE \*UPHOLSTERY \*HARDWOOD
- \*STONE POLISHING
- \*24HR EMERGENCY WATER EXTRACTION
- \*COMMERCIAL JANITORIAL SERVICES



# 2ND ANNUAL Donor Appreciation Luncheon

*By Cindy DeLongchamp*



In April, the Junior League of Montgomery hosted its 2nd annual Donor Appreciation Luncheon, inviting over 40 of the League's current and prospective community partners to a special luncheon in their honor.

The incoming League President, Ashley White, addressed the diverse group of community leaders at Central Restaurant in downtown Montgomery. Ashley began her introduction by telling the group "who" the Junior League of Montgomery is. "We are judges, attorneys, HR executives, doctors, sales reps, CPA's, CFO's, executives, dentists, secretaries, teachers, financial advisors and women who keep their households running. We are 700 women strong with members from age 21 to 90, in all walks and stages of life." Ashley expressed her thanks to the group for their ongoing support and noted that she looks forward to continuing the relationships that will strengthen our community through our common goals.

Dawn Stephens, 2013-2014 President, thanked the sponsors for their support and attendance. She reviewed the major fundraising accomplishments of the League during the 2013-2014 year.

- **Holiday Market** boasted 10,000 attendees and a net profit just shy of \$150,000.
- **College and Career Night** hosted almost 2500 participants and netted a \$9,000 profit.
- **Taste of the River Region** was a sold out event and netted close to \$17,000.
- Spring fundraisers, the **Shamrock Shuffle** and **Rummage Sale** earned about \$20,000 in total.

The Junior League of Montgomery gave over \$77,000 and 20,000 volunteer hours to the 2013-2014 local projects that were selected by committees and voted on by the League's general membership.

Dawn Stephens also addressed the group about the importance of community partners and sponsors for the advancement of local initiatives. She offered a special thanks to Jacque Foshee, the League's Donor Relations Director, for organizing the day's event and all of her efforts in the advancement of the League's fundraising endeavors. Dawn also thanked the members of the Community Advisory Board for their attendance at the luncheon. This board is comprised of five prominent professionals in the community who lend their advice and counsel as the League develops ongoing plans and direction to make a positive impact in Montgomery.

Burton Ward, one of the Community Advisory Board members, attended the luncheon. Burton also serves as President of the Central Alabama Community Foundation, a nonprofit philanthropic foundation created by and for the people of central Alabama. While Burton was an active member of the Junior League, she served in many capacities, including on the Board of Directors as the Membership Chair. "I'm honored to be able to continue to be involved with the Junior League. Today's lunch is a great step in continuing to build on relationships between the League and community leaders."

Julia Henig, Tommy McKinnon and several other employees from the Junior League's 2013-2014 Title Sponsor, Baptist Health, were in attendance at the luncheon. Julia is not only a Baptist Health employee but an active member of the Junior League. Julia joined the League seven years ago and has served on several committees, including the newest fundraiser, Shamrock Shuffle, for which she has been an active part of for the past two years. "As a healthcare leader in our community, I believe it is important





for Baptist Health to support the Junior League. I know the League will uphold the values of service, relations and commitment. We can attach our brand to the Junior League of Montgomery and know that we both strive to make a positive, local impact. Sponsoring the League is also a great way to put the initiatives of Baptist Health in the forefront."

Michelle Mowery, the 2014-2015 Fundraising Vice President, also addressed the group and reiterated the benefits associated with the various levels of League sponsorship. She pointed out the large mobile banners in the room which list each of our sponsors, and are displayed at all membership meetings, fundraiser events and League functions. She mentioned that the league wide

sponsorship was a success last year. The feedback received from donors was that they benefited from being a sponsor at each of the League four fundraisers. Michelle introduced a new marketing brochure and reviewed the various levels of sponsorship. She also discussed how the League tailors its publicity to suit the needs and market for the donors – to put their initiatives in front of the audience that they want to reach. Some levels of sponsorship also include an ad in League Logs, the magazine created by the Junior League and is mailed three times a year to all members, sustainers, chamber members and area businesses.

Each table in the private dining room included at least one League member who is serving a leadership role in 2014-2015.





These ladies were available to answer questions and expand on their specific roles for the donors and potential donors who were seated at their tables.

- Karen Herman, Fundraising Chair
- Dawn Owens, College and Career Night Co Chair
- Becky Farace, Taste of the River Region Chair
- Victoria Belton, Communications Vice President
- Lindsey Jinright, Holiday Market Chair
- Cindy DeLongchamp, Editor, *League Logs*

Robert Burns, the Senior Manager of Public Relations at Hyundai Motor Manufacturing of Alabama commented, "Through our sponsorship of the Junior League, we look forward to touching a wide audience; this is a great organization and by partnering with the Junior League of Montgomery, we are able to work together to make a difference in the community. We are on the same page."

*If your company could benefit from partnering with the Junior League of Montgomery, please contact Jacque Foshee, Donor Relations Director at 334.288.8816 or cell 334.462.0434. The full list of sponsorship levels and benefits is listed on pages 30-32.*





59









## PLACEMENT SPOTLIGHT

# ClefWorks

By Katy Sulhoff



61

For many children in Montgomery, exposure to quality music is limited. It may not be played at home and music education in schools is waning. That's why the Junior League of Montgomery selected ClefWorks as one of its community placements.

My sister and I called it "mommy music" growing up. Driving down I-85 to get us to ballet, my mother would blare her favorite NPR program featuring some symphony from who knows where, despite Sarah's and my grumblings. We were about to get our fill of classical music in the dance room and that was enough for us. "Mommmyyyy, puleeeeeeze turn on something else! Anything else." But she didn't. She continued to play her mommy music on the way to ballet, to the grocery store, and in the house on Saturday afternoons. Clearly she was not "with it," Sarah and I thought. Now that my mother and I can level with each other about her manipulative maternal ploys, I've learned she knew exactly what she was doing. She was instilling in us an appreciation for good music. Not a fascination with the latest Disney star turned singer or recent winner of The Voice (although it was Star Search in those days); but to have regard for quality music. As every good Southern girl knows, mother is always right.

ClefWorks is a non-profit organization with a mission to provide opportunities for community members of all ages to experience the timeless, yet evolving art form of chamber music in an approachable way. They bring the music to you by hosting concerts at venues where people already commonly gather like local hot spots (129 Coosa and Tipping Point, for example) and private homes. Chief of these concerts is the ClefWorks Outreach Series where League volunteers focused their attention.

During the nine-month school year, nine League ladies led by Committee Chair Liz Quin, helped coordinate four concerts featuring the Troy University Faculty Jazz Quartet, "Jazz Comes Home," at four different venues: Flowers Elementary School, Montgomery Christian School, E.D. Nixon Elementary School and at Baldwin Middle Magnet School's YMCA Goodtimes program.

The mission of the Outreach Series is to bring the power of music to life for children in the River Region who are often underserved

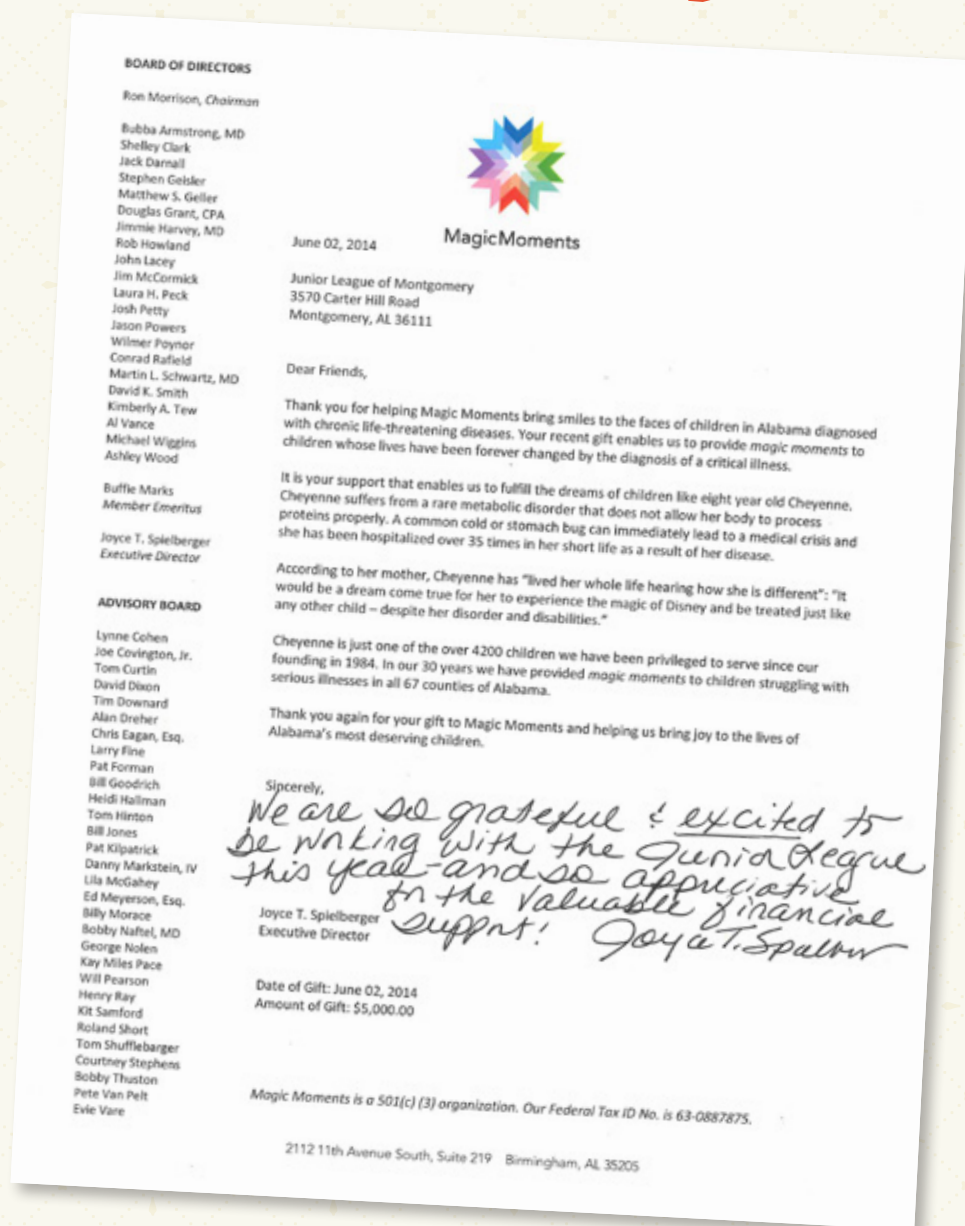
when it comes to the arts. League volunteer Mia Kreimeier worked closely with the program. "Every concert was performed by musicians who are also teachers, professors and artists. They took the time to explain different pieces, styles and facts -- bolstering the educational experience for the students," she said. The students also learned concert etiquette, music history, and got hands-on experiences through what ClefWorks calls "the petting zoo." During this time, kids could meet the musicians and explore the instruments.

The placement didn't come without its set of challenges. Planning four concerts in four different venues requires a tremendous amount of thought and coordination. The League had to work around school schedules and within the budget. While challenging at times, it was rewarding. "Interacting with the kids and knowing that you're making an impression on them through music is its own reward," Kreimeier said. "You are giving them tools that will take them far in life, in all kinds of different ways. Even if they don't do music, the discipline, focus and commitment can help them succeed in every subject."

The League's commitment to ClefWorks opened up a whole new world for the students, like my mother did when she played her "mommy music." It exposed them to something new that in turn advances the League's goal and mission of investing in and connecting with our diverse community.

As Stevie Wonder sang, "Music is a world within itself; With a language we all understand; With an equal opportunity; For all to sing, dance and clap their hands." Nothing quite like music has the ability to connect people. No matter where you're from; music is something everyone understands, even if you're not familiar with the tune.

# Thank You JLM!



Thank you to David Robertson of Robertson Photography for your years of service and support of the Junior League of Montgomery. You always made us and our families look our best. We will miss your talents and wish you all the best in your retirement.



YOU ARE INVITED!  
JOIN US AT 10:30AM  
ON SUNDAYS  
RELAXED ATMOSPHERE



# RIVER CITY CHURCH


real people. real lives. real church.

A **NEW** UNITED METHODIST CONGREGATION

A diverse, Christ-centered fellowship, reaching people  
with the love of God through the power of the Holy Spirit

301 Dexter Avenue

[www.rivercityumc.com](http://www.rivercityumc.com)

 River City Church Montgomery

Rev. Tony McCullough, Minister | Ty Erb, Worship Leader





Junior League of Montgomery, Inc.  
3570 Carter Hill Road  
Montgomery, Alabama 36111  
[www.jlmontgomery.org](http://www.jlmontgomery.org)

Non-Profit Org.  
U.S. Postage  
**PAID**  
Permit No. 87  
Montgomery, AL



EASTDALE  
MALL

ATLANTA HIGHWAY & EASTERN BOULEVARD  
 [EASTDALE-MALL.COM](http://EASTDALE-MALL.COM)

**85**  
OF YOUR  
FAVORITE  
STORES

BELK, JCPENNEY, SEARS, DILLARD'S  
BUILD-A-BEAR WORKSHOP  
CHUCK E. CHEESE'S  
ICE SKATING  
CAROUSEL & MORE



THE  
**IN**  
PLACE FOR  
FAMILY  
FUN

