



THE JUNIOR LEAGUE OF MONTGOMERY PRESENTS

DARE TO *Dream*



# College & CAREER FAIR

## 2023-2024 Scholarship and Financial Aid Guide

*Thank you to our sponsors*





U.S. AIR FORCE



USSF

---

# THE FUTURE IS WHERE YOUR STORY BEGINS

SSgt Jermiah Charles

334-202-7789

1-800-423-USAFA

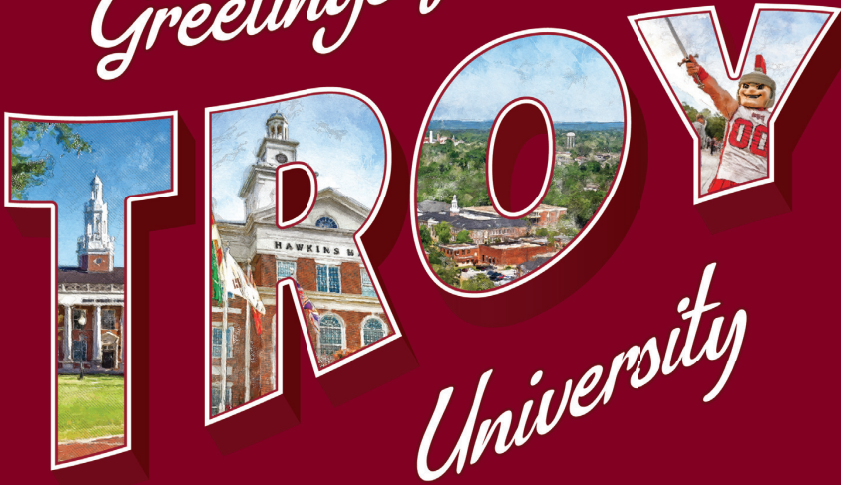
694 McQueen Smith Road North, Prattville, AL 36066

AIR FORCE CAREERS

Elevate your future, in uniform and out, in the U.S. Air Force. With over 200 careers, a great benefits package, and part-time and full-time options, there's no limit to how high you can go. To learn more, visit [airforce.com](https://airforce.com), [spaceforce.com](https://spaceforce.com).



*Greetings from*



*University*

We're teaching a new generation to lead. At Troy University, we offer leadership opportunities from day one. Choose from more than 170 majors and minors or build your own program to make your dreams real. Be part of a family of leaders with more than 175,000 alumni worldwide. Now is your time to learn to lead.

**Plan a campus tour.**

**Our Admissions team is here to answer all of your questions!**

**[troy.edu](http://troy.edu) | 1-800-586-9771**

**TROY**  
UNIVERSITY™



*City of* **Montgomery**, *Alabama*

Greetings:

On behalf of the City of Montgomery, I want to welcome you to the “Dare to Dream: College and Career Day” presented by the Junior League of Montgomery in collaboration with Montgomery Public Schools. The 39<sup>th</sup> Annual College & Career Fair will be a remarkable event that promises to empower and inspire our community’s future leaders.

This event provides a platform that bridges education and professional pathways as we strive to equip students with the tools and insights they need to carve their unique paths toward success. The partnership between the Junior League of Montgomery and Montgomery Public Schools underscores a shared commitment to nurturing the aspirations of our youth.

As the Mayor of Montgomery, I commend the organizers, participants, and sponsors for their dedication to making this event a reality. To the students embarking on their academic journeys and the professionals who continue to shape our workforce landscape, I encourage you to seize this opportunity to Dare to Dream – to envision your potential and chart a course that aligns with your goals.

Thank you for being a part of this exciting event!

Sincerely,

A handwritten signature in black ink, appearing to read 'Steven L. Reed', written in a cursive style.

Steven L. Reed



Dear Students, Families, and Educational Leaders,

Welcome to the Junior League of Montgomery's Dare to Dream: College and Career Fair! It is with a heart full of gratitude and excitement that we celebrate our 39th College and Career Fair, an event that embodies the spirit of a servant's heart and the pursuit of intentional, bold, and inspiring paths. We are truly appreciative of our College and Career Fair sponsors: Auburn University at Montgomery, Alabama Power Company, Hyundai Motor Manufacturing Alabama, Publix Super Market Charities, and Walmart. The Junior League of Montgomery is also grateful for the partnership with Montgomery Public Schools.

As you navigate the thresholds of your high school journey and stand at the precipice of your collegiate and career pursuits, I am deeply inspired by the incredible potential and enthusiasm that radiates from each of you. The theme of this year's fair, "Dare to Dream," resonates powerfully in a world where you should never stop dreaming. We believe in you and those dreams. Hosting the College and Career Fair free to our community is one way to encourage those dreams. To further encourage those dreams, we will be giving away two \$1000 scholarships to two deserving Alabama High School Seniors planning to attend college.

To the juniors and seniors, you are the embodiment of boldness and courage. You are stepping into a world of endless possibilities, and I encourage you to approach this fair with an open mind and an eagerness to explore. Seize this opportunity to engage with representatives from various colleges and industries, to ask questions, to learn, and to envision the path that aligns with your passions and aspirations. Remember, a bold step today can lead to an inspiring journey tomorrow.

May this fair be a platform for intentional conversations and connections, sparking the flames of inspiration that will light the way towards fulfilling careers and meaningful lives. Whether you leave with a clearer sense of direction or with more questions than answers, know that each step you take is a step forward, and that the journey itself is a testament to your courage and determination.

Since 1926, Junior League of Montgomery has been known as an organization of women committed to volunteering and giving back to our community. This year's College and Career Fair's success is largely in part because of the hard work of Jennifer DeBoer, Beth Warren and other committee members. They have worked tirelessly to ensure the College and Career fair was filled with a variety of colleges, universities, and career opportunities. We are so grateful for each of them!

Thank you for being a part of this incredible event. Let me take a moment to encourage you to participate in our other events this year: Holiday Market, October 18-21, 2023, Rummage Sale, March 23, 2024, and Tulips and Juleps, May 4, 2024. By supporting the Junior League of Montgomery, you are helping the League to support our community. If you are interested in more information or membership, please visit our website at [www.jlmontgomery.org](http://www.jlmontgomery.org).

With warm regards and heartfelt appreciation,

Quenita D. Mitchell

*Quenita D. Mitchell*

2023-2024 President  
Junior League of Montgomery



334-288-8816

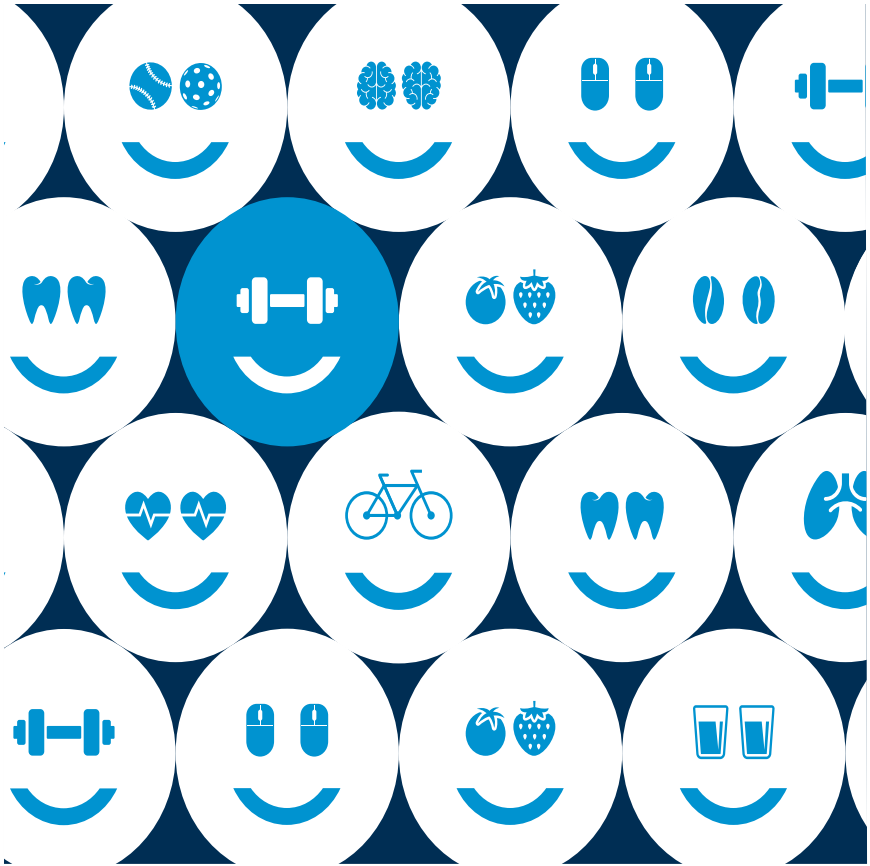


3570 Carter Hill Road  
Montgomery, AL 36111



[information@jlmontgomery.org](mailto:information@jlmontgomery.org)





## Find what makes you the healthiest, **happiest version of yourself.**

Blue Cross and Blue Shield of Alabama provides you with health tips and access to the largest network of doctors in the state so you can become the best version of yourself. Learn more about getting healthier and happier at [AlabamaBlue.com/Happy](https://alabamablue.com/happy).



# PROMISES MADE, PROMISES KEPT

[WWW.MARCHEJOHNSON.COM](http://WWW.MARCHEJOHNSON.COM)





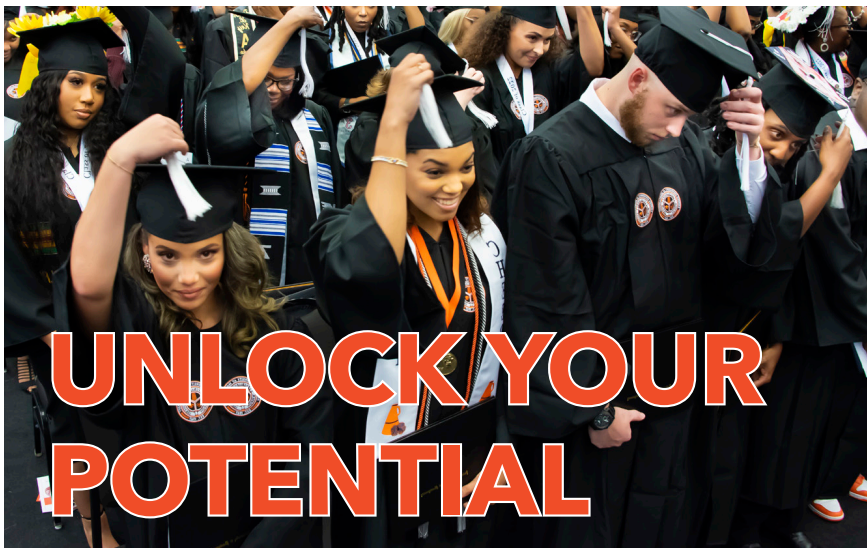
*There's more  
with **MPS***



**MONTGOMERY  
PUBLIC SCHOOLS**

[www.mps.k12.al.us](http://www.mps.k12.al.us)





# UNLOCK YOUR POTENTIAL

**YOUR JOURNEY TO EXCELLENCE BEGINS HERE!**

Scholarships  
starting at **18+ ACT** at **\$1,000**  
**up to \$10,000 per year**  
[aum.edu/jlm](http://aum.edu/jlm)



**Lower Tuition, Higher Scholarship**  
**More than 90 degrees.**  
**AUM - A University in Motion**

**AUM**

**AUBURN UNIVERSITY  
AT MONTGOMERY**

P.O. Box 244023  
Montgomery, AL 36124-4023  
[admissions@aum.edu](mailto:admissions@aum.edu) | [aum.edu](http://aum.edu)  
334-244-3000 • 1-800-227-2649

# Paying for College: Grants, Loans, and Other Financial Aid Sources

Finding financial aid can seem overwhelming when you're trying to get ready for college or career school.

The U.S. Department of Education's Office of Federal Student Aid recommends:

## Preparation

Scholarships and state aid can help cover the cost of college or career school, but you may find yourself in need of federal assistance.

1. Start with savings. Begin saving early.
2. Scholarships – Look for scholarships through your state or college as well as national and community organizations.
3. State Aid – Many states have college funding programs. Ask a guidance counselor or your college financial aid office for more information.

## FAFSA

The FAFSA is the Free Application for Federal Student Aid and is the only way to apply for federal student aid. Many universities, colleges and trade schools REQUIRE you to fill out the FAFSA in order to be eligible to apply. The schools you list on your application will use FAFSA information to evaluate your financial need and determine how much federal aid you are eligible to receive. Many states and colleges also use information from your FAFSA to provide their own financial aid.

- Each October 1, the FAFSA is available for the upcoming school year. It is best to fill it out as early as you can because some aid is first come, first served.
- When you complete the FAFSA, you'll need to provide personal and tax information. If you've filed your taxes already, you may be able to automatically retrieve the information from the IRS. If you haven't, just estimate your tax information and update it later.
- Complete the FAFSA online at <https://studentaid.gov/h/apply-for-aid/fafsa>. Make sure to fill out and submit the FAFSA each year you are in college. There is NEVER a fee to fill the FAFSA out online, do not pay

*Disclaimer: Scholarship types and award amounts are subject to change at any time at the discretion of the institution awarding the scholarship. Please confirm the details of the scholarship prior to applying.*

for FASFA serves or companies that advertise that they can help you get FASFA money. The only legal and true way to get FASFA money is to apply directly to them.

- After you submit your FAFSA, you'll receive your Student Aid Report (SAR). Your SAR summarizes the information on your FAFSA. Review it and make corrections if needed.
- Your FAFSA helps your school determine the types of federal student aid you are eligible to receive.

## TYPES OF FEDERAL STUDENT AID

As the largest provider of financial aid, the U.S. Department of Education's Office of Federal Student Aid provides grants, loans, and work-study funds.

**Grants:** Grants are free money that does not have to be repaid.

**Loans:** Student loans are real loans (like a car or home loan) that need to be repaid with interest. Be sure to look for pay back dates and rates if you are planning to secure funding through this method.

**Work-Study:** A work-study job gives you the opportunity to earn money to help pay your educational expenses.

## GRANTS

A grant is a form of financial aid that doesn't have to be repaid (unless, for example, you withdraw from school and owe a refund, or you receive a TEACH Grant and don't complete your service obligation). A variety of federal grants are available, including:

- Pell Grants,
- Federal Supplemental Educational Opportunity Grants (FSEOG),
- Teacher Education Assistance for College and Higher Education (TEACH) Grants, and Iraq and Afghanistan Service Grants.

More information about grants can be found at <https://studentaid.gov/understand-aid/types/grants>



## SCHOLARSHIPS

Many nonprofit and private organizations offer scholarships to help students pay for college or career school. This type of free money, which is sometimes based on academic merit, talent, or a particular area of study, can make a real difference in helping you manage your education expenses.

More information about scholarships can be found at <https://studentaid.gov/understand-aid/types/scholarships>

## WORK-STUDY JOBS

The Federal Work-Study Program allows you to earn money to pay for school by working part-time. You'll earn at least the current federal minimum wage. However, you may earn more depending on the type of work you do and the skills required for the position. Your total work-study award depends on

- when you apply,
- your level of financial need, and
- your school's funding level.

More information about work-study can be found at <https://studentaid.gov/understand-aid/types/work-study>

## LOANS

A loan is money you borrow and must pay back with interest. If you apply for financial aid, you may be offered loans as part of your school's financial aid offer. When you receive a student loan, you are borrowing money to attend a college or career school. You must repay the loan as well as interest that accrues. It is important to understand your repayment options so you can successfully repay your loan.

For more information about loans, visit <https://studentaid.gov/understand-aid/types/loans>

## AID FOR MILITARY FAMILIES

There are special aid programs or additional aid eligibility for serving in the military or for being the spouse or child of a veteran.

### **Learn About Aid for Military Families:**

<https://studentaid.gov/understand-aid/types/military>

*Disclaimer: Scholarship types and award amounts are subject to change at any time at the discretion of the institution awarding the scholarship. Please confirm the details of the scholarship prior to applying.*

## AID FOR INTERNATIONAL STUDY

Federal student aid may be available for studying at a school outside the United States, whether you're studying abroad or getting your degree from an international school.

### **Learn About Aid for International Study:**

<https://studentaid.gov/understand-aid/types/international>

## APPLY FOR FINANCIAL AID

Federal student aid from ED covers such expenses as tuition and fees, room and board, books and supplies, and transportation. Aid can also help pay for other related expenses, such as a computer and dependent care. Thousands of schools across the country participate in the federal student aid programs; ask the schools you're interested in whether they do!

Apply for federal student aid using the *Free Application for Federal Student Aid* (FAFSA®) form. And remember, the first F in "FAFSA" stands for "free" – you shouldn't pay to fill out the FAFSA form! (<https://studentaid.gov/resources/scams>)

- grants (<https://studentaid.gov/understand-aid/types/grants>)
- work-study (<https://studentaid.gov/understand-aid/types/work-study>),
- loans (<https://studentaid.gov/understand-aid/types/loans>)

**Complete a FAFSA form at <https://studentaid.gov/h/apply-for-aid/fafsa>**

## AID AND OTHER RESOURCES FROM THE FEDERAL GOVERNMENT

Besides aid from the U.S. Department of Education (ED), the federal government offers a number of other financial aid programs. These programs include

- tax benefits for education <https://studentaid.gov/resources/tax-benefits>
- education awards for community service with AmeriCorps <https://www.americorps.gov/>
- educational and training vouchers for current and former foster care youth <https://studentaid.gov/sites/default/files/foster-youth-vouchers.pdf>;
- and/or scholarships and loan repayment programs through the Department of Health and Human Services' Indian Health Service (<https://www.ihs.gov/loanrepayment/>), National Institutes of Health

*Disclaimer: Scholarship types and award amounts are subject to change at any time at the discretion of the institution awarding the scholarship. Please confirm the details of the scholarship prior to applying.*

(<https://www.lrp.nih.gov/>), and National Health Service Corps (<https://nhsc.hrsa.gov/>).

Federal student aid from ED covers such expenses as tuition and fees, room and board, books and supplies, and transportation. Aid can also help pay for other related expenses, such as a computer and dependent care. Thousands of schools across the country participate in the federal student aid programs; ask the schools you're interested in whether they do!

Apply for federal student aid — grants, work-study, and loans — using the *Free Application for Federal Student Aid* (FAFSA) form.

You can estimate your eligibility for federal student aid and your Expected Family Contribution (EFC) with our Federal Student Aid Estimator. Be sure to use the tool before you fill out the FAFSA form.

### **AID FROM STATE OF ALABAMA**

Other than federal aid, you might be eligible for financial assistance from the State of Alabama. Check out Alabama Commission On Higher Education: <https://ache.edu/>

### **AID FROM YOUR COLLEGE OR CAREER SCHOOL**

Many schools offer financial aid from their own grant and/or scholarship funds. Find out what might be available to you:

- Visit your school's financial aid page on its website, or contact the financial aid office.
- Ask at the department that offers your course of study; they might have a scholarship for students in your major.
- Fill out any applications your school requires for its own aid programs, and meet your school's deadlines.

### **HELPFUL INFORMATION**

<https://studentaid.gov/>

Federal Student Aid Information Center at (800) 433-3243

*Disclaimer: Scholarship types and award amounts are subject to change at any time at the discretion of the institution awarding the scholarship. Please confirm the details of the scholarship prior to applying.*



## *Committed to energizing communities.*

We love our community. At Alabama Power, we share your passion for all that makes our state more accessible and inclusive. For over 100 years, it's also what energizes us each day. We're fully committed to the belief that, when we work together, the best is yet to come. Just look at those smiles. **It's Power for a Better Alabama.**



Foundation

[alabamapower.com](http://alabamapower.com)

© 2023 Alabama Power Company

**In-State Four-Year Colleges & Universities**  
**ALABAMA STATE UNIVERSITY**

**Welcome to  
Hornet Nation!**

**ASU**



**ALABAMA STATE  
UNIVERSITY**

*Disclaimer: Scholarship types and award amounts are subject to change at any time at the discretion of the institution awarding the scholarship. Please confirm the details of the scholarship prior to applying.*



## Choose your major from one of seven academic colleges offering 62 degrees!

### Percy J. Vaughn Jr. College of Business Administration

- Accounting and Finance
- Computer Information Systems
- Management
- Marketing

### College of Education

- Elementary Education
- Early Childhood Education
- Secondary Education
- Collaborative Teacher (Special Education)
- Music Education
- Physical Education
- Recreational Therapy

### College of Health Sciences

- Health Information Management
- Rehabilitation Services with a Concentration in Addiction Studies

### College of Liberal Arts and Social Sciences

- Communications (Includes Print Journalism, Public Relations, Radio/Television, Recording Industry, Recording Technology)
- Criminal Justice (Corrections, Juvenile Justice, Law Enforcement)

- English
- Psychology
- Political Science and History
- Social Work

### College of Science, Technology, Engineering and Mathematics

- Biology (Marine Biology, Pre-Health Professional)
- Computer Science
- Marine Biology
- Mathematics
- Chemistry
- Forensic Chemistry
- Forensic Biology
- Biomedical Engineering

### College of Visual and Performing Arts

- Music
- Theatre Arts
- Art
- Dance

### University College

- Interdisciplinary Studies

### Division of Aerospace Studies—Air Force ROTC

Apply online at [www.alasu.edu](http://www.alasu.edu)

### Admissions Requirements

High school diploma from an accredited high school

GPA	ACT/SAT
2.00 - 2.49	18/940-970
2.50 - 2.99	17/900-930
3.00 - 3.49	16/860-890
3.50 or higher	15/810-850

#### >> Now test optional

Have your official high school transcript and ACT or SAT scores sent to:

**Alabama State University**  
**Admissions and Recruitment**  
**P.O. Box 271 | Montgomery, AL 36101**

or email to [admissions@alasu.edu](mailto:admissions@alasu.edu)

### Financial Aid

**Free Application for Federal Student Aid (FAFSA)**  
 Go to [www.fafsa.ed.gov](http://www.fafsa.ed.gov) | School code: 001005

### Scholarships

**Application Dates: October 1-February 15**

**To apply, visit [www.alasu.edu/scholarships](http://www.alasu.edu/scholarships)**

■ **Presidential Academic Scholarship**  
**3.76 GPA | 26 ACT or 1240 SAT**

Full tuition, books, required fees and on-campus room and board for a maximum of eight semesters.

■ **Academic Excellence Scholarship**  
**3.51 GPA | 22 ACT or 1160 SAT**

Full tuition, required fees and books for a maximum of eight semesters.

■ **Academic Incentive Scholarship**  
**3.0 GPA | 20 ACT or 1020 SAT**

Full tuition and \$500 for books for a maximum of eight semesters.

■ **Black & Gold Scholarship**  
**2.75 GPA | 18 ACT or 940 SAT**

\$2,000 - \$4,000 for tuition, required fees and/or on-campus room and board for a maximum of eight semesters.

■ **President's Promise Scholarship**  
**2.75 GPA | No Application Needed**

\$8,328 – applied to the out-of-state portion of tuition. (For out-of-state students only.)

### Annual Cost of Attendance

ASU	In-State	Out-of-State
Undergraduate Tuition (12-18 hours)	\$8,328	\$16,656
Room/Board (estimate)	\$6,788	\$6,788
Athletic Fee	\$100	\$100
Health Insurance	\$80	\$80
General University Fee	\$2,740	\$2,740
<b>Total</b>	<b>\$18,036</b>	<b>\$26,364</b>

>> Payment plans available

[www.alasu.edu](http://www.alasu.edu)

Under the “STUDENTS” menu, click “UNDERGRADUATE ADMISSIONS”



### Contact us!

**Office of Admissions**  
**334-229-4291 | 1-800-253-5037**  
**[admissions@alasu.edu](mailto:admissions@alasu.edu)**



@asuadmissions (FB) | @ALASStateAdmis (Twitter)  
 @ASU\_Admission (Instagram)

*Disclaimer: Scholarship types and award amounts are subject to change at any time at the discretion of the institution awarding the scholarship. Please confirm the details of the scholarship prior to applying.*

# AUBURN UNIVERSITY

**Contact:** Office of University Scholarships  
108 Mary Martin Hall  
Auburn, AL 36849

**Phone:** (334) 844-7570

**Email:** scholar@Auburn.edu

**Websites:** www.auburn.edu | <https://auburn.edu/scholarship/index.php>

To ensure maximum consideration, it is imperative that students are knowledgeable of the specific deadlines associated with all scholarships awarded. Scholarships will be awarded to first-year students November to late March and to transfer and current students in late March.

Visit <https://auburn.edu/scholarship/index.php> for all deadlines.

A comprehensive list of all scholarships awarded by Auburn University is located here: <https://auburn.academicworks.com/>

## Competitive Merit Scholarships

Competitive merit scholarships are renewable for four years. First-year students must enroll summer or fall immediately following high school graduation to receive consideration. First-year students accepted for admission by mid-January receive automatic consideration. A scholarship application is not required. Consideration is based on high school GPA and standardized test score. Verify Auburn has received your most recent academic information in the Applicant Portal. Auburn will accept the ACT Superscore Report. Auburn will also calculate a superscore for the SAT and any individual score reports from ACT. Only your best testing result will be used for scholarship consideration. Updated highest scores must be received by Auburn by January 10. Scores received after this deadline will not be reviewed for competitive merit scholarship consideration.

• **Spirit of Auburn Presidential Scholarship:** Minimum High School GPA Required 3.5; Minimum ACT Score Required 33-36; Estimated Annual Award Amount \$11,000

• **Spirit of Auburn Founders Scholarship:** Minimum High School GPA Required 3.5; Minimum ACT Score Required 30-32; Estimated Annual Award Amount \$9,000

• **Spirit of Auburn University Scholarship:** Minimum High School

*Disclaimer: Scholarship types and award amounts are subject to change at any time at the discretion of the institution awarding the scholarship. Please confirm the details of the scholarship prior to applying.*



GPA Required 3.5; Minimum ACT Score Required 28-29; Estimated Annual Award Amount \$5,000

### **National Merit**

National Merit Finalists receive a stipend of \$4,000 over four years at \$1,000 per year. Depending on eligibility as determined through completion of the FAFSA, eligible students may receive an additional \$1,000 annually. National Merit Finalists who are Alabama residents may receive the National Scholars Presidential Scholarship valued at \$42,000 over four years at \$11,000 per year, which will replace a previously awarded competitive merit scholarship.

## **AUBURN UNIVERSITY AT MONTGOMERY**

Contact: Office of Admissions  
P.O. Box 244023  
Montgomery, AL 36117  
Phone: (334) 244-3615  
Email: [admissions@aum.edu](mailto:admissions@aum.edu)  
Website: [www.aum.edu/admissions/scholarships-and-financial-aid/scholarships](http://www.aum.edu/admissions/scholarships-and-financial-aid/scholarships)

### **Freshman Academic Scholarships**

AUM offers a variety of scholarships for students of all types and in all colleges. We strive to make education affordable for everyone, and scholarships are a great way to do that. A scholarship is a financial aid option that does not need to be repaid. We offer various different types of scholarships to help make college more attainable no matter your stage of life.

### **Outstanding Scholars Award**

- Requires a minimum ACT superscore score of 30 (1400 SAT) & a minimum high school GPA of 3.0.
- Award totals \$40,000-\$10,000 per academic year (\$5,000 per semester).

### **Principal Scholarship**

- Requires a minimum ACT superscorescore of 29 (1350 SAT) & a minimum high school GPA of 3.0.
- Award totals \$32,000-\$8,000 per academic year (\$4,000 per semester).

*Disclaimer: Scholarship types and award amounts are subject to change at any time at the discretion of the institution awarding the scholarship. Please confirm the details of the scholarship prior to applying.*

### **Vice Principal Scholarship**

- Requires a minimum ACT superscore score of 28 (1310 SAT) & a minimum high school GPA of 3.0.
- Award totals \$28,000-\$7,000 per academic year (\$3,500 per semester).

### **Counselor Scholarship**

- Requires a minimum ACT superscore score of 27 (1280 SAT) & a minimum high school GPA of 3.0.
- Award totals \$24,000- \$6,000 per academic year (\$3,000 per semester).

### **Warhawk Scholarship**

- Requires a minimum ACT composite score of 25 (1200 SAT) & a minimum high school GPA of 3.0.
- Award totals \$20,000 - \$5,000 per academic year (\$2,500 per semester).

### **Achievement Scholarship**

- Requires a minimum ACT composite score of 23 (1130 SAT) & a minimum high school GPA of 3.0.
- Award totals \$12,000 - \$3,000 per academic year (\$1,500 per semester).

### **Recognition Scholarship**

- Requires a minimum ACT superscore score of 20 (1020 SAT) & a minimum high school GPA of 3.5.
- Award totals \$6,000 - \$1,500 per academic year (\$750 per semester).

### **Opportunity Scholarship**

- Requires a minimum ACT superscore score of 18 (950 SAT) & a minimum high school GPA of 2.5.
- Award totals \$4,000 - \$1,000 per academic year (\$500 per semester).

### **AUM State Scholarship**

- Requires a minimum ACT superscore score of 20 (1020 SAT) & a minimum high school GPA of 3.0.
- Scholarship is limited in number and competitive.

### **Freshman Housing Scholarships**

A limited number of scholarships are available for new freshmen applying to live on campus. To be considered for this one-time award, students must first be admitted to AUM and submit this application by April 1. The Freshman Housing Scholarship covers 50% of student's housing cost for Spring 2024 term and 100% of housing costs for the Summer 2024 term

*Disclaimer: Scholarship types and award amounts are subject to change at any time at the discretion of the institution awarding the scholarship. Please confirm the details of the scholarship prior to applying.*

(students will be responsible for Fall 2023 housing costs). Private or semi private rooms are excluded from this scholarship. For more information, visit <https://www.aum.edu/scholarship/freshman-housing-scholarship/>

### **Blount Presidential Endowed Scholarship**

The Blount Presidential Endowed Scholarship is established by the Blount Foundation, Inc. of Montgomery, Alabama. This scholarship is awarded to outstanding graduating high school seniors in the state of Alabama. Blount Presidential Scholarships shall be limited to full-time students enrolled in the pre-engineering curriculum at Auburn University at Montgomery. Pre-engineering students at Auburn University at Montgomery must be committed to fields of either civil engineering or mechanical engineering. This scholarship is a one-year award totaling \$5,000. This scholarship is competitive and limited in number. A separate application is required and the deadline is March 1.

For additional scholarship opportunities and information, visit: <https://www.aum.edu/scholarships-and-financial-aid/scholarships/>

## **BIRMINGHAM-SOUTHERN COLLEGE**

**Address:** Office of Admissions  
900 Arkadelphia Road  
Box 549008  
Birmingham, AL 35254

**Phone:** (800) 523-5793

**Website:** <https://www.bsc.edu/>

More than two-thirds of first-year students qualify for scholarships based on their scholarly achievement and extracurricular record. You'll be considered automatically when you apply; no additional application form is required for our general merit scholarships.

These scholarships are calculated based on standardized test scores, GPA, class rank, leadership potential, and engagement and accomplishments beyond the classroom. They are renewable annually for full-time students who maintain the required GPA.

More scholarship information can be found here: <https://www.bsc.edu/admission/academic-scholarships.html>

*Disclaimer: Scholarship types and award amounts are subject to change at any time at the discretion of the institution awarding the scholarship. Please confirm the details of the scholarship prior to applying.*

## **Special Scholarships**

BSC offers a broad range of scholarships based on your achievements, interests, background, or selected major. These special scholarships often stack on top of academic scholarships. All are renewable all four years, provided you meet the GPA requirements and other renewal criteria.

All special scholarship forms and required materials must be submitted by February 15 by 11:59 p.m. CT. Special scholarship applications open on October 1.

## **Abroms Scholarship for Jewish Student Leaders**

The Judy and Harold Abroms Legacy Scholarship is awarded to two first-year Jewish students actively involved in their local Jewish communities. For consideration, candidates must have a minimum GPA of 3.00, demonstrated involvement and ability as assessed by scholarship committee, and a willingness to serve on BSC's Hillel Student Advisory Board.

## **Bonner Leader Program**

The Bonner Leader Program is a leadership development program for students who are committed to community and civic engagement. This program will offer you a chance to work in a community-based organization and to experience a wide array of enrichment activities that will enhance your college experience and help you grow as a person.

## **Comer Education Scholarship**

The Comer Scholarship is awarded to an admitted first-year student who is a resident of Alabama and intends to major in Education.

## **Distinguished Scholars Awards**

These competitive scholarships providing up to full tuition are based on outstanding achievement in and out of the classroom. Recipients will receive consideration for the invitation-only scholarship competition held in early spring before your entry fall. You must complete an application for admission no later than February 1. Scholarships are awarded based on high school transcripts, standardized test scores, extracurricular activities, and essay, in addition to an interview completed during the Scholarship Day event.

## **Harrison Honors Program**

The Donald C. Harrison Honors Program is designed to foster students' intellectual curiosity, their oral and written communication skills, and

*Disclaimer: Scholarship types and award amounts are subject to change at any time at the discretion of the institution awarding the scholarship. Please confirm the details of the scholarship prior to applying.*

their ability to think and study independently. The program looks for students who have a willingness to take risks and are just as interested in the route they take to their academic goals as the goals themselves.

### **Cultural Diversity Scholarship**

The Cultural Diversity Scholarship recognizes the value of inclusion and diversity that is essential to the mission of the college and awards scholarships to newly admitted students. Candidates must be admitted, first-year students. Students need to have demonstrated fit and ability in their admission application and have a willingness to be student leaders in multicultural student activities on campus.

### **Stump Entrepreneurship Scholars Program**

The Stump Entrepreneurial Scholars Program is for students who have demonstrated an exemplary entrepreneurial spirit through their work in and out of the classroom and who are interested in business as a career. To be eligible for this program students must have an anticipated major of Business Administration or Accounting. Scholarships are awarded on a financial need basis. Entrepreneurial Scholarships and the Entrepreneurship Scholars Program are endowed by BSC graduates Jane and Kevin Stump, with support from an existing fund created by Joseph S. Bruno.

### **United Methodist Church Scholarships**

BSC is a national leader in providing financial assistance to United Methodist students, clergy families, and those called to ministry. All nominations must come from the student's local church with confirmation of membership.

### **Visual and Performing Arts Scholarship Competition**

These renewable scholarships are given to students who have been admitted to the college and plan to study or participate in theatre, musical theatre, media & film, art, art history, architectural studies, or music. High school seniors and transfers must either send in audition tapes, submit a digital portfolio, or interview with Visual and Performing Arts Faculty to be considered.

# FAULKNER UNIVERSITY

**Address:** Office of Admissions  
5345 Atlanta Hwy.  
Montgomery, AL 36109

**Phone:** (334) 386-7200

**Email:** [admissions@faulkner.edu](mailto:admissions@faulkner.edu)

**Websites:** [www.faulkner.edu](http://www.faulkner.edu) | <https://www.faulkner.edu/admissions/scholarships/>

To qualify for a scholarship, award or grant, a student must be in the traditional program and classified as a traditional student. Adults who are classified as traditional students are not eligible for the scholarships, awards, or grants herein described.

All supplemental material (essays, letters of recommendation, etc.) should be submitted when making applications for scholarships.

Full-time enrollment (at least 12 semester hours) is required for any scholarship.

Students receiving a scholarship or award from Faulkner University whose financial aid packages exceed the direct cost of education (tuition, fees, room, and board) will not receive a credit or a refund. In these cases, the amount of the scholarship or award from Faulkner will be adjusted to preclude the awarding of a credit or refund.

\*Unless otherwise noted, scholarships and award amounts are for one academic year. One half of the total amount will be awarded in the fall term, and the other half will be awarded in the spring term. Unless otherwise noted, all scholarships are renewable upon meeting the continuation criteria for up to nine semesters. All students receiving scholarships or awards are required to apply for all available federal and state aid.

## **Scholarships (Freshmen Applicants Only)**

### **Founder's Award:**

- ACT scores of 30 and over (SAT of 1360 and above, CLT of 98 and above).
- Amount: \$13,000 per year

### **Trustee's Award**

- ACT scores of 25-29 (SAT of 1200-1350, CLT of 79-91)
- Amount: \$11,000 per year

*Disclaimer: Scholarship types and award amounts are subject to change at any time at the discretion of the institution awarding the scholarship. Please confirm the details of the scholarship prior to applying.*

### **President's Award**

- ACT scores of 20-24 (SAT of 1030-1190, CLT of 61-76)
- Amount: \$10,000 per year

### **Dean's Award**

- ACT scores of 18-19 (SAT of 960-1020, CLT of 54-58)
- Amount: \$9,000 per year

### **Faulkner Merit Award**

- ACT scores of 17 & below (SAT of 950 & below, CLT of 50 & below)
- Amount: \$6,000 per year

### **National Merit Finalist/Semi Finalist Scholarship**

- Must be confirmed as a National Merit Finalist and have listed Faulkner University as their first-choice university with the National Merit Corporation.
- Finalists will receive funding equal to full tuition, room, board, and mandatory fees when coordinated with state, federal, and institutional scholarships and awards.
- Semi-Finalists will receive funding equal to full tuition when coordinated with state, federal, and institutional scholarships and awards.

For more scholarships, visit <https://www.faulkner.edu/admissions/scholarships/>

## **HUNTINGDON COLLEGE**

**Address:** Office of Admission  
1500 E. Fairview Ave.  
Montgomery, AL 36106

**Phone:** (334) 833-4497

**Email:** [admissions@hawks.huntingdon.edu](mailto:admissions@hawks.huntingdon.edu)

**Website:** [www.huntingdon.edu](http://www.huntingdon.edu)

### **Presidential Scholars Program**

- Provides a \$19,000 scholarship award
- Minimum requirements: 23 ACT (super-scored by Admissions) and 3.0 GPA in high school or transfer coursework.
- Participate in the Presidential Scholars program
- For more information, consult the Presidential Scholars information on the website.

*Disclaimer: Scholarship types and award amounts are subject to change at any time at the discretion of the institution awarding the scholarship. Please confirm the details of the scholarship prior to applying.*



- The Presidential Scholars program requires campus residency.
- Because of the time commitment for this program, students who participate in NCAA-III intercollegiate sports, cheerleading, or band are not eligible for the Presidential Scholars program.

**Corporate Alliance Award** - \$12,500. Employee or employee dependent employed by Alabama Power, ALFA, Baptist Health, or Regions (Corporate Alliance Award Application required).

**Cross and Flame Award**—\$12,500. Must be an active member of a Methodist church and be recommended by Methodist clergy.

**Military and Dependent Survivor Awards**—\$12,500. Contact the Office of Admission for details.

**River Region Awards**—\$12,500. Must live within 45 miles of the Huntingdon campus.

**AISA Award**—\$12,500. Must have graduated from an AISA school.

**Hawk Award** - \$12,000. Unconditional admission.

**Huntingdon Grant** - \$9,000. Must meet admission requirements.

**Participation Scholarships and Awards:** (No special application, but tryouts or auditions may be required. Not stackable. Renewable for up to three additional years and students may receive ONLY ONE scholarship/award). Must meet admission requirements.

**Scarlet & Grey Choir Scholarship** — \$14,000; must participate in choir, cannot be involved in NCAA-III athletic teams, campus residency required. Must meet admission requirements.

**Scarlet & Grey Band Award** — \$14,000. Must participate in Marching Scarlet & Grey and the Huntingdon Winds Concert Band. Must meet admission requirements.

**Scarlet & Grey Cheer Award** — \$14,000. Must make the Hawks Cheer Squad (tryouts required).

**Huntingdon Military Science Scholarship** — \$12,500. Must participate in Army ROTC or Air Force ROTC.

*Disclaimer: Scholarship types and award amounts are subject to change at any time at the discretion of the institution awarding the scholarship. Please confirm the details of the scholarship prior to applying.*



# HUNTINGDON COLLEGE

## MONTGOMERY, ALABAMA



### Huntingdon Highlights

- Laptop, books and information resources provided.
- Flexible Fridays—classes meet M–Th.
- Career and vocational exploration with a focus on ethics begins in the freshman year.
- The Huntingdon Village provides a warm, friendly, and welcoming college community most students refer to as “home.”
- Huntingdon’s Know and Be Known tradition is small classes, a family atmosphere, and a place where every student makes a difference.
- The Hawk Spirit is like no other, providing abundant opportunities to get involved, serve, lead, and make friendships that will last a lifetime.
- **21 NCAA-Division III Athletic Teams | Esports | Cheer | Dance Team**  
**50+ Clubs and Organizations | Dynamic Band & Choir Programs**

[www.huntingdon.edu](http://www.huntingdon.edu)

Huntingdon College, in accordance with Title IX and Section 106.8 of the 2020 Final Rule under Title IX of the Education Amendments of 1972, other applicable federal and state law, and stated College policy, prohibits discrimination on the basis of sex. Similarly, it prohibits discrimination on the basis of actual or perceived race, color, ethnicity, gender, gender identity, sexual orientation, disability, religion, age and/or national origin in its education program or activity, including admission and employment. For more information, see [www.huntingdon.edu/misconduct](http://www.huntingdon.edu/misconduct).

## JACKSONVILLE STATE UNIVERSITY

**Address:** Financial Aid  
107 Angle Hall  
700 Pelham Road North  
Jacksonville, AL 36265

**Phone:** (256) 782-5006

**Email:** [admissions@jsu.edu](mailto:admissions@jsu.edu), [scholarships@jsu.edu](mailto:scholarships@jsu.edu)

**Websites:** [www.jsu.edu](http://www.jsu.edu)  
<http://www.jsu.edu/financialaid/scholarships/new-student-merit-based-scholarships.html>

### Merit Scholarships

First-Time Freshmen will be considered automatically for merit scholarships upon admission to JSU.

For more information about available scholarships, visit <https://www.jsu.edu/financialaid/scholarships/new-student-merit-based-scholarships.html>

## SAMFORD UNIVERSITY

**Address:** Office of Admissions  
800 Lakeshore Drive  
Birmingham, AL 35229

**Phone:** (205) 726-3673

**Websites:** [www.samford.edu](http://www.samford.edu) | [www.samford.edu/go/scholarships](http://www.samford.edu/go/scholarships)

Samford merit awards are designed to recognize high achievement in academics, service or community engagement. Recipients embody Samford core values and are valuable contributors to the university community. Students fully admitted to Samford will receive consideration for the awards below. All freshman merit awards are guaranteed for 8 semesters or until notification of degree completion (graduation), whichever comes first. Specified expectations within the scholarship descriptions must be maintained. Transfer scholarships are awarded per semester, for the expected number of semesters remaining to obtain a Samford undergraduate degree. Some scholarships could require additional information. Please read descriptions carefully. If you submitted the Common App or Samford application for admission to Samford University, you have your own custom Application Status Page where you can view and submit all eligible scholarship applications.

For more information, please visit [www.samford.edu/go/scholarships](http://www.samford.edu/go/scholarships)

*Disclaimer: Scholarship types and award amounts are subject to change at any time at the discretion of the institution awarding the scholarship. Please confirm the details of the scholarship prior to applying.*

## **Crosland Scholarship**

Named for Samford University's first Rhodes Scholar in 1910, applicants considered for this scholarship display a high level of academic achievement. Recipients of the Crosland Scholarship are among an elite group of students chosen for their outstanding scholarly achievements, their character, commitment to others and to the common good.

The average award for a Crosland Scholar is \$17,500 and can be combined with other scholarships at Samford including the Davis and Marvin Mann Legacy. However, this scholarship cannot be combined with the Marion Scholarship. Competitive freshmen applicants for this scholarship will have an ACT of 26 or higher (SAT of 1240 or higher) and 3.5 minimum GPA. Freshmen applying without a test score will be considered for the Crosland Scholarship using a recalculated, weighted GPA on a 4.0 scale. Competitive transfer applicants have a minimum college GPA of 3.5 and have earned at least 24 credits of undergraduate coursework. No additional application required. Crosland Scholarship recipients are expected to maintain a minimum 3.0 GPA on all Samford University course work and uphold Samford's code of values.

## **Davis Scholarship**

Major Harwell G. Davis was Samford University's 15th President and one of its most transformational leaders. Best known for his efforts in guiding then Howard College to its current location in Homewood, AL in 1957, Major Davis embodied the strength, care for others and love of God that Samford University is known for. Davis Scholarship recipients are students who have demonstrated outstanding community engagement and service to others throughout their high school years.

For entering freshmen. Additional application required. Davis Scholarship recipients are expected to maintain a minimum 2.5 GPA on all Samford University course work and uphold Samford's code of values. The applicants must be competitive by December 1 of their senior year. The Davis Scholarship is a \$2000 annual scholarship.

## **Marion Scholarship**

Founded in 1841 as Howard College in Marion, Alabama, Samford University is now home to more than 5,600 students. During the over 175-year history, Samford and its people have shown strength, perseverance, and dedication to excellence. The Marion Scholarship is awarded to individuals who will continue the tradition of holding steadfast to the values of Samford University while aspiring to make a positive impact in their communities and throughout the world.

*Disclaimer: Scholarship types and award amounts are subject to change at any time at the discretion of the institution awarding the scholarship. Please confirm the details of the scholarship prior to applying.*

The average award for a Marion Scholar is \$13,000 and can be combined with other scholarships at Samford including the Davis and Marvin Mann Legacy. However, this scholarship cannot be combined with the Crosland Scholarship. Competitive freshmen applicants for this scholarship will have a 3.0 minimum high school GPA and be fully admitted to Samford. Competitive transfer applicants have an average college GPA of 3.0 and have earned at least 24 credits of undergraduate coursework. No additional application required. Marion Scholarship recipients are expected to maintain a minimum 2.5 GPA on all Samford University course work and uphold Samford's code of values.

### **Marvin Mann Scholarships**

Mann Scholarships expand access to high-caliber students from a variety of backgrounds. With a transformational \$100 million gift, Marvin Mann '54, is the largest single donor to any higher education institution in the state of Alabama.

For more information about the Marvin Mann Scholarships and other scholarship opportunities, visit <https://www.samford.edu/admission/scholarships>



**Build something remarkable.**  
Hyundai Motor Manufacturing Alabama



Scan the QR code for website



## **SOUTH UNIVERSITY, MONTGOMERY**

**Address:** Office of Financial Aid  
5355 Vaughn Road  
Montgomery, AL 36116

**Phone:** (334) 395-8800

**Websites:** [www.southuniversity.edu](http://www.southuniversity.edu)  
<https://www.southuniversity.edu/paying-for-college/high-school-grants>

### **High School Grants**

South University will now offer new Local High School Grants for all eligible high school, GED and Home School graduates to receive help with tuition and fees to make higher education more accessible.

At South University, our goal is to be a good local partner and to support our school systems and students on the pathway to graduation.

To qualify for the Local High School Grants, you must be a graduate of an eligible county high school, GED or Home Schooling as well as a first-time college student (no prior post-high school college enrollment or credits; high school dual-enrollment students are eligible), and have a cumulative GPA of 2.0 at high school graduation. To continue receiving the grant after your first term, you must maintain eligibility.\*

Discover the extensive program offerings, along with flexible learning options including day, evening, and online courses. Learn and grow in a welcoming environment with supportive faculty and staff who provide one-on-one attention and mentorship from enrollment through graduation. Our goal is to help you to build practical, in-demand skills for pursuing and growing your career.

Contact the admissions teams below at South University to learn more about our programs and your financial aid options\*\*, including the Local High School Grants offered by each of our locations.

\*to maintain eligibility for High School Grants additional measures are required and will be outlined by the student's Academic Counselor. \*\* Financial aid is available to those who qualify.

### **Institutional Grants**

Provided to students who demonstrate financial need and are full-time students. Eligibility for the Institutional Grant is determined on these student qualification factors including:

- Have an official Expected Family Contribution (EFC), as determined by the U.S. Department of Education, based on completion of the Free Application for Federal Student Aid (FAFSA) for the applicable

*Disclaimer: Scholarship types and award amounts are subject to change at any time at the discretion of the institution awarding the scholarship. Please confirm the details of the scholarship prior to applying.*

award year. The Students' EFC will determine the Maximum Grant Amount.

- Is enrolled in an undergraduate program of study.
- Maintain Satisfactory Academic Progress as defined in the school catalog and be in good academic standing.
- Attend a minimum of 10 credit hours per quarter.
- Maintains full-time enrollment status past the midpoint of the quarter.
- Speak with an admission representative to discuss full eligibility requirements.

Get started today. South University - The right direction for a brighter future.

## STILLMAN COLLEGE

**Address:** Office of Scholarship Programs  
3601 Stillman Blvd.  
Tuscaloosa, AL 35401

**Phone:** (205) 366-8893

**Email:** [scholarships@stillman.edu](mailto:scholarships@stillman.edu)

**Website:** <https://stillman.edu/scholarships/>

In order to be considered for a scholarship, a student must submit a completed scholarship application to [scholarships@stillman.edu](mailto:scholarships@stillman.edu). All questions should be directed to the Office of Scholarships at (205) 366-8893 or [scholarships@stillman.edu](mailto:scholarships@stillman.edu). \*Scholarship awards subject to change without notice.

Priority deadline for scholarships: April 1st annually

Academic Scholarships are awarded based upon the applicant's academic record. The scholarships awarded cannot exceed full tuition and fees. Students receiving tuition remission benefits or other awards from the college or any other source must adhere to this policy. Students must apply for these scholarships online. Priority will be given to those who have completed all requirements by June 1.

Stillman College offers a variety of scholarships, including: academic, athletic, band, choir, departmental, visual arts, alumni, endowed, transfer, and international.

For additional information regarding available scholarships, visit <https://stillman.edu/scholarships/>

*Disclaimer: Scholarship types and award amounts are subject to change at any time at the discretion of the institution awarding the scholarship. Please confirm the details of the scholarship prior to applying.*



# TROY UNIVERSITY

**Address:** Office of Admissions  
111 Adams Administration Building  
Troy, AL 36082  
**Phone:** (800) 414-5756  
**Websites:** [www.troy.edu](http://www.troy.edu)  
[www.troy.edu/scholarships-costs-aid/scholarships/index.html](http://www.troy.edu/scholarships-costs-aid/scholarships/index.html)

At TROY, we believe in providing students with incredible scholarship opportunities. Whether you're eligible for scholarships with GPA requirements or something as specific as geographical location, area of study or essay-writing abilities, TROY has plenty of scholarship opportunities available for you. Pursue the degree that will lead you to the career of your dreams, and do it with the help of TROY's amazing donors and sponsors.

Students will find a wide range of undergraduate and graduate scholarships offered at our TROY campuses and through TROY Online. To find out which opportunities are available for you, visit <https://www.troy.edu/scholarships-costs-aid/scholarships/index.html> to find the option that best applies to you.

Undergraduate students at TROY are eligible for several scholarship opportunities that assist to make college more affordable. While ACT/SAT scores are not required for admission to TROY, students must have at least a 20 ACT or 1030 SAT and 3.0 GPA to apply for freshman scholarships.\*

Merit scholarships are awarded based on high school academic merit. The application for these scholarships opens every year on Sept. 1 and closes on Dec. 1.

Foundation scholarships are awarded to students who meet the requirements set by the donating party. These can range from the academic program students are studying to where students live. Applications for Foundation Scholarships open every year on Jan. 1 and close on March 1.

\*TROY University will consider scholarship applicants without their ACT scores through a review of the total student record, however, to ensure eligibility and maximize award value, students should submit all ACT/SAT testing records.

**The Scholars Award:** Students with a 30-32 ACT/1360-1440 RSAT and a 3.7 GPA will receive tuition and basic housing

*Disclaimer: Scholarship types and award amounts are subject to change at any time at the discretion of the institution awarding the scholarship. Please confirm the details of the scholarship prior to applying.*

**The Scholars PLUS Award:** Students with a 33-36 ACT/1450-1600 RSAT and a 3.7 GPA will receive tuition, full housing and meal plan

**The Sorrell Scholars Award:** The Sorrell College of Business, in conjunction with the TROY Office of Admissions, seeks to identify and enroll academically superior students who plan to pursue the undergraduate degree in Accounting, Economics or Global Business. Through the Sorrell Scholars Program, five entering freshmen will be named each year with the distinction of being a Sorrell Scholar. Sorrell Scholars will be selected out of The Scholars Award recipients. Sorrell Scholars will serve as student ambassadors for the Sorrell College of Business and be exposed to many of the operational aspects of the College.

Sorrell Scholars will receive additional scholarship monies through an endorsement from Sorrell College in the amount of \$1500 - \$3000.

**The Chancellor's Scholarship:** The award amount varies from \$6,000- \$10,000 annually

Requirements are 26-29 ACT / 1230-1350 RSAT and 3.5 GPA.

**The Trojan Leadership Scholarship:** The award amount varies from \$2,000-\$4,000 annually.

Requirements are 20-25 ACT or/ 1030-1220 RSAT with 3.0 GPA.

### **Auxiliary Scholarships**

- **The Alabama Girls and Boys State Scholarship:** \$1,000 Non-Renewable. Requires student to be unconditionally admitted with at least a 3.0 GPA/4.0 scale. Must be or have been a participant & attendee of Alabama Girls State Program or Alabama Boys State Program.

- **TROY Legacy Scholarship:** This is a one-time \$1,000 award and is non-renewable. Requirements are 3.0 GPA/4.0 scale and at least 20 ACT/1030 RSAT. Applicants must have a parent/grandparent that is a member of the National Alumni Association and/or a local Alumni Chapter.

To apply for these scholarship opportunities and find additional information about other scholarships, visit <https://www.troy.edu/scholarships-costs-aid/scholarships/undergraduate-scholarships.html>

## THE UNIVERSITY OF ALABAMA

**Address:** Undergraduate Scholarships  
203 Student Service Center  
Box 870109  
Tuscaloosa, AL 35487-0109

**Phone:** (800) 933-BAMA

**Email:** [scholarships@ua.edu](mailto:scholarships@ua.edu)

**Website:** <http://scholarships.ua.edu>

The University of Alabama offers some of the most generous scholarship opportunities in the country. Serving all qualifying prospective and current students across two broad scholarship categories: automatic merit and competitive scholarships.

There are two ways students can be eligible for scholarships under UA's current test optional admission policy.

**Competitive Scholarships:** The competitive scholarship application is part of your application for admission. Students are eligible for competitive scholarship consideration if their application for admission and all supporting documents are received by the Competitive Scholarship Deadline.

**Automatic Merit Scholarships:** To qualify for automatic merit scholarships, students must provide a test score and official transcript. Applicants may indicate that they do not want their test scores included in the review of their application for admission and still submit test scores for automatic merit scholarship consideration.

For information on scholarship deadlines and policies, visit [afford.ua.edu/scholarships](http://afford.ua.edu/scholarships)

For complete information on scholarships for In-State Freshmen Students go to <https://scholarships.ua.edu/freshman/in-state/>

For other departmental scholarships, go to the colleges' and schools' individual websites here: <https://www.ua.edu/academics#colleges>

# UNIVERSITY OF ALABAMA AT BIRMINGHAM

**Address:** UAB Office of Undergraduate Admissions  
Box 99, 1720 2nd Ave. S  
Birmingham, AL 35487-0231

**Phone:** (205) 934-8221

**Email:** chooseuab@uab.edu

**Websites:** www.uab.edu | www.uab.edu/students/paying-for-college/  
financial-aid

UAB is pleased to offer a variety of scholarships to assist in meeting students' educational goals.

## **2024 In-State Freshman Scholarships**

UAB awards merit scholarships for a wide range of academic achievements. Current high school seniors who apply to UAB with test scores or as test-optional will be considered for merit scholarships. Students must be U.S. citizens, permanent residents, or onshore students on select visa types to receive a merit scholarship.

Scholarship Deadline: Apply for Admission by December 1, 2023.

### **Presidential Scholarship**

- Annual amount: \$11,000
- 30-36 ACT or 1360-1600 SAT and 3.5 GPA or higher

### **Provost Scholarship**

- Annual amount: \$7,000
- 27-29 ACT or 1260-1350 SAT and 3.5 GPA or higher

### **Provost Scholarship**

- Annual amount: \$7,000
- 30-36 ACT or 1360-1600 SAT and 3.0-3.49 GPA

### **Green & Gold Scholarship**

- Annual amount: \$4,000
- 24-26 ACT or 1160-1250 SAT and 3.5 GPA or higher

### **Green & Gold Scholarship**

- Annual amount: \$4,000
- 27-29 ACT or 1260-1350 SAT and 3.0-3.49 GPA

*Disclaimer: Scholarship types and award amounts are subject to change at any time at the discretion of the institution awarding the scholarship. Please confirm the details of the scholarship prior to applying.*

### **Blazer Scholarship**

- Annual amount: \$3,000
- 22-23 ACT or 1100-1150 SAT and 3.5 GPA or higher

### **Blazer Scholarship**

- Annual amount: \$3,000
- 24-26 ACT or 1160-1250 SAT and 3.0-3.49 GPA

For additional information about scholarship applications and other scholarship information, visit <https://www.uab.edu/admissions/cost/scholarships/in-state-students>

## **UNIVERSITY OF MOBILE**

**Address:** Office of Financial Aid  
5735 College Parkway  
Mobile, AL 36613

**Phone:** (251) 442-2222

**Email:** [askfinancialaid@umobile.edu](mailto:askfinancialaid@umobile.edu)

**Websites:** [www.umobile.edu](http://www.umobile.edu) | <https://umobile.edu/financial-aid/>

Once you complete the admissions process you are automatically considered for an academic scholarship award. In addition to academic merit awards, UM also offers a variety of talent-based scholarships. Our enrollment counselors can help guide you in applying for a variety of grants, loans and work-study programs that can help lower your out-of-pocket college payment.

### **Presidential Scholarship Award**

- \$13,000 per year.
- Based on academic achievement.
- Automatic renewal if a student maintains a cumulative GPA of 3.0 and enrolls in at least 12 hours per semester.
- Receivable up to eight semesters.

### **Founder's Scholarship Award**

- \$11,000 per year.
- Based on academic achievement.
- Automatic renewal if a student maintains a cumulative GPA of 2.75 and enrolls in at least 12 hours per semester.
- Receivable up to eight semesters.

*Disclaimer: Scholarship types and award amounts are subject to change at any time at the discretion of the institution awarding the scholarship. Please confirm the details of the scholarship prior to applying.*

## **Dean's Scholarship Award**

- \$10,000 per year.
- Based on academic achievement.
- Automatic renewal if a student maintains a cumulative GPA of 2.0 and enrolls in at least 12 hours per semester.
- Receivable up to eight semesters.

## **Be Known Community Scholarship Award**

- \$7,000 per year.
- Based on academic achievement.
- Automatic renewal if a student maintains a cumulative GPA of 2.0 and enrolls in at least 12 hours per semester.
- Receivable up to eight semesters.

For more information on scholarships, contact the Office for Enrollment Services at [umenrollment@umobile.edu](mailto:umenrollment@umobile.edu) and (251) 442-2222.

## **UNIVERSITY OF MONTEVALLO**

**Address:** Office of Admissions  
Reynolds Hall Station 6030  
Montevallo, AL 35115

**Phone:** (205) 665-6030

**Email:** [admissions@montevallo.edu](mailto:admissions@montevallo.edu)

**Website:** <https://www.montevallo.edu/admissions-aid/undergraduate-admissions/>

It's important to remember that a college education is an investment in your future, and here at the University of Montevallo, we think it's equally important to invest in our students.

All entering freshmen and transfer students admitted to UM by the scholarship priority deadline will be included in the scholarship evaluation for merit-based scholarships. In addition to merit-based awards, scholarships are also available based on financial need, leadership, community service, choice of major and other miscellaneous criteria.

For more information, visit: [www.montevallo.edu/admissions-aid/undergraduate-admissions/scholarships/](http://www.montevallo.edu/admissions-aid/undergraduate-admissions/scholarships/)

*Disclaimer: Scholarship types and award amounts are subject to change at any time at the discretion of the institution awarding the scholarship. Please confirm the details of the scholarship prior to applying.*

## UNIVERSITY OF NORTH ALABAMA

**Address:** Office of Student Financial Aid  
University of North Alabama  
UNA Box 5014  
318 Commons Building  
Florence, AL 35632  
(256) 765-4278

**Email:** [sfins@una.edu](mailto:sfins@una.edu)

**Website:** <http://www.una.edu/financial-aid/>

### **Excellence Scholarships**

These scholarships are awarded based on a student's high school unweighted GPA, scores on the SAT/ACT, or both. To be automatically considered for this Scholarship, a student must apply for admission to UNA by the deadline and with all of their available academic credentials on record.

- Amount: Up to \$12,000 + housing
- Learn More: <https://www.una.edu/financial-aid/scholarships-excellence.html>

### **Scholarships of Distinction**

Students majoring in Accounting, Computer Science, Information Technology, Computer Information Systems, Occupational Health Science, and Engineering Technology are eligible to apply for the Scholarship of Distinction, which covers up to full cost of tuition, fees, room, and board.

- Amount: Up to \$20,718/year
- Learn More: <https://una.academicworks.com/opportunities>

For more scholarship opportunities, visit <https://www.una.edu/affordable/index.html>

*Additional Terms: The University of North Alabama will not be liable for errors and misprints in publications outside our control. Decisions on scholarship eligibility and amounts will be determined by the UNA Director of Student Financial Aid.*

## UNIVERSITY OF SOUTH ALABAMA

**Address:** Office of Scholarship Services  
390 Alumni Circle  
Meisler Hall, Ste. 1225  
Mobile, AL 36688-0002

**Phone:** (251) 461-1958

**Email:** [scholarships@southalabama.edu](mailto:scholarships@southalabama.edu)

**Website:** [www.southalabama.edu](http://www.southalabama.edu)

At USA, we recognize the importance of a quality education and are dedicated to helping you find realistic and workable ways to achieve your higher education goals. Last year, USA awarded more than \$27 million in scholarship dollars, through a variety of programs.

To ensure consideration for USA Scholarships, incoming freshman should apply for admission by the priority deadline of their senior year. Priority Admission Deadline date is February 15. Freshman Scholarship Application deadline date is February 15.

### **USA Freshman Admission Scholarship Programs**

All high school graduates, who have been admitted as first-time freshman by the priority deadline date, will be considered for one of the freshman admission scholarship programs, depending on their selected admission route.

For information about Alabama Freshman Resident Scholarships and other scholarship opportunities, visit <https://www.southalabama.edu/departments/financialaffairs/scholarships/freshscholarships/>

*Disclaimer: Scholarship types and award amounts are subject to change at any time at the discretion of the institution awarding the scholarship. Please confirm the details of the scholarship prior to applying.*



# UNIVERSITY OF WEST ALABAMA

**Address:** Office of Admissions and Enrollment Management  
Station 4  
Livingston, AL 35470

**Phone:** (205) 652-3400 or (888) 636-8800

**Email:** [scholarships@uwa.edu](mailto:scholarships@uwa.edu)

**Website:** [www.uwa.edu](http://www.uwa.edu)

## **Trustee Academic & Leadership Scholarships Requirements**

To be considered for academic, leadership, or alumni scholarship assistance, a student must meet unconditional Admissions standards (19 or higher ACT or 990 or higher SAT and 2.0 or better GPA) and apply for admission and scholarship by April 15.

Trustee awards are not available to online students or to international students who are attending UWA through a partnership program or memorandum of agreement with another university or college and/or who have special UWA scholarship provisions.

## **Trustee Academic Awards**

Awards are made to entering on campus freshmen (or transfers with less than 24 credit hours) with a 21 or higher ACT/ 1060 or higher SAT or 3.0 GPA. Scholarships range from \$2,000 to \$12,000 per year and are renewable for up to four academic years with the maintenance of a minimum 3.0 GPA. On-campus residency is required for two years to maintain the full value of Trustee scholarships.

## **Trustee Valedictorian & Salutatorian**

Valedictorian and Salutatorian scholarships are available to on campus freshmen that have been recognized by their high school as one of the top two students in their graduating senior class. Students must meet unconditional admissions standards (19 or higher ACT/ 990 SAT). On-campus residency is required for the first two years at UWA for recipients.

## **Trustee Leadership Awards**

These awards are available to entering on campus freshmen (or transfer students with less than 24 credit hours) demonstrating outstanding leadership ability as demonstrated through high school, community, or religious activities. Students must meet unconditional admissions standards (19 or higher ACT/ 990 SAT or a 2.5+ GPA). On-campus

*Disclaimer: Scholarship types and award amounts are subject to change at any time at the discretion of the institution awarding the scholarship. Please confirm the details of the scholarship prior to applying.*

residency is required for the first two years at UWA for recipients. Must submit online UWA Scholarship Application. Awards vary, up to \$2,500 per year. Activities that warrant consideration include: SGA President, Senior Class President, or Club President; Other SGA, Class, or Club Officer position; Recognition in the Hugh O'Bryan Youth Scholarship (HOBY) program; Participation as a Distinguished Young Woman; Election as your school's Boys or Girls State representative; Participation in the Youth Leadership Development Program

For additional scholarship information and application details, visit <https://www.uwa.edu/admissions/undergraduate/scholarships>

# We're dreaming of...

# *Holiday Market!*

Join us at the  
35th Annual Holiday Market

October 18-21, 2023

Multiplex at Cramton Bowl  
220 Hall St.  
Montgomery, AL 36104

Mark your calendars for another year  
of holiday shopping for one of a kind  
gifts with family and friends!





**IMMEDIATE INJURY  
TREATMENT**

- ▶ BAPTIST HEALTH
- ▶ SOUTHERN ORTHOPAEDIC SURGEONS
- ▶ PROIMPACT PHYSICAL THERAPY

**Walk-ins Welcome**  
8am-8pm | Mon-Sat

Urgent Ortho Care,  
Physical Therapy & Sports  
Medicine—all in one new facility.

**EastChase Across from Target**

 **Baptist OrthoNow**

**[BaptistOrthoNow.org](http://BaptistOrthoNow.org) | 334.747.4030**

# Out-of-State Four-Year Colleges & Universities

## BELHAVEN UNIVERSITY

**Address:** Financial Aid Office  
1500 Peachtree Street  
Jackson, MS 39202  
**Phone:** (601) 968-5940  
**Email:** admission@belhaven.edu  
**Website:** www.belhaven.edu

All entering first-year and transfer students at our Jackson, Mississippi campus are eligible for Belhaven University scholarships. These scholarships are the foundation of your financial aid package.

### **Academic Scholarships**

Academic Scholarships, also known as merit-based scholarships, reward you for high academic achievement. We evaluate all full-time students seeking their first bachelor's degree in the on-campus, undergrad program.

**President's Scholarship for First-Year Students:** You qualify for this award if you are a first-year student with a high school cumulative GPA of 3.5 or above and an ACT of 26 or above.

**Dean's Scholarship for First-Year Students:** You qualify for this award if you are a first-year student with a high school cumulative GPA of 3.5 or above and an ACT of 20-25.

**Advantage Scholarship for First-Year Students:** You qualify for this award if you are a first-year student with a high school cumulative GPA of 2.75 or above and test scores are not required for this scholarship.

**Achievement Grant for First-Year Students:** You qualify for this award if you are a first-year student with a high school cumulative GPA of 2.5 or above and test scores are not required for this scholarship.

For more information about scholarship opportunities, visit <https://www.belhaven.edu/admission/undergrad/aid/scholarships.html>

*Disclaimer: Scholarship types and award amounts are subject to change at any time at the discretion of the institution awarding the scholarship. Please confirm the details of the scholarship prior to applying.*

# COLUMBIA INTERNATIONAL UNIVERSITY

**Address:** 7435 Monticello Road

Columbia, SC 29203

**Phone:** (800) 777-2227

**Website:** <http://www.ciu.edu/>

## Undergraduate Scholarships & Grants

Generous friends and alumni have been supporting CIU students for years through a variety of grants and scholarships. The Financial Aid Office works with each student individually to determine the best overall financial aid package based on eligibility at the time of admission. CIU Scholarships and Grants are available to students enrolled full-time for the fall and spring semesters and are not awarded for summer courses.

## CIU Merit Scholarships

Merit scholarships are for full-time undergraduate students and are based on high school GPA (4.0 scale) or college GPA for transfer students that have completed 12 or more college credits post high school.

Visit <http://www.ciu.edu/undergraduate-scholarships-grants> to use the appropriate calculator to determine the scholarship you could qualify for as a full-time enrolled student and to view other scholarship opportunities.

For more information about available scholarships, visit <https://www.ciu.edu/financial-aid>



WIND CREEK®

WindCreek.com | Play for FREE in the Casinoverse app! | ©2023 Wind Creek Hospitality

# EMMANUEL UNIVERSITY

**Address:** 139 Lions Place  
Franklin Springs, GA 30639  
**Phone:** (800) 860-8800  
**Email:** admissions@ec.edu  
**Website:** https://eu.edu/

A scholarship is a financial aid award that does not need to be repaid. Scholarships are a form of merit-based aid, meaning they are offered based on merit or achievement in a specific area. Below is a list of the scholarships currently available\* at Emmanuel College.

\*Student-Athletes receiving athletic scholarships cannot receive additional EC Scholarships other than academic scholarship. In order to receive academic scholarship in addition to athletic scholarship, student athletes must meet the NCAA exempted Academic Aid criteria.

The following Scholarship Grids are a helpful tool in determining what academic scholarship you may be eligible for based on your grade point average (GPA). We use a standard 4.0 GPA scale when calculating scholarships.

GPA	Amount
4.0+	\$ 4,000
3.75-3.99	\$ 3,000
3.25-3.74	\$ 2,000
3.0-3.24	\$ 1,000
Not Eligible	\$ -

amounts subject to change

## Freshman Scholarship Calculator

Students who are first-time freshmen or transfers who have attempted less than 24 hours are subject to this awarding matrix.

## Valedictorian Scholarship-Up to \$9,000

The Valedictorian Scholarship is an institutional program that recognizes superior academic performance. Incoming freshmen and transfer freshmen who have attempted less than 24 credit hours in college, have been selected as valedictorian of their graduating class, have minimum test scores of 1170 on the old version of the SAT (taken prior to March 2016), 1240 on the new version of the SAT (taken March 2016 or later), or 26 on the ACT, and are entering a degree program at Emmanuel College are eligible for this scholarship. (The graduating class must have at least ten graduates and must meet regular acceptance requirements.)

## Church Matching Scholarship-Up to \$1,000 total

A matching scholarship is provided to full-time, degree-seeking students who receive a contribution from their local church (any denomination). The recipient must regularly attend their local church. (It is the student's

*Disclaimer: Scholarship types and award amounts are subject to change at any time at the discretion of the institution awarding the scholarship. Please confirm the details of the scholarship prior to applying.*



responsibility to inform his or her church of any guidelines pertaining to this scholarship.) Emmanuel will match up to \$500 per year.

### **Legacy Scholarship-\$500**

The Legacy Scholarship is an institutional scholarship given to new full-time degree seeking students enrolling for the first time, whose parent(s) attended Emmanuel College. The award is up to \$250 per semester or up to \$500 per year. This scholarship is not available during the summer semester. Students beginning enrollment during the spring semester are eligible to receive this scholarship.

### **EC Impact Scholarship-Up to \$2500**

The EC Impact Scholarship (ECI Scholarship) is an institutional program that recognizes mission-fit incoming first-year students with a heart for leadership, evangelism, and discipleship. For 2023-2024, the award is up to \$2,500 per year or \$1,250 per semester. Awards are given to full-time, degree-seeking freshmen each year.



[eu.edu](http://eu.edu)  
[online.ec.edu](http://online.ec.edu)



NOW OFFERING ONLINE, GRADUATE, AND TRADITIONAL ON-CAMPUS EDUCATION EXPERIENCES.

*Disclaimer: Scholarship types and award amounts are subject to change at any time at the discretion of the institution awarding the scholarship. Please confirm the details of the scholarship prior to applying.*

## Other Scholarship opportunities

There are many other scholarship opportunities at Emmanuel College including:

Hollinshead Future Educator's  
Graphic Design Scholarship  
Yearbook Staff Scholarship  
Endowed Scholarships  
Athletic Scholarships

\*NOTE: For more information or clarification, please contact the financial aid office at (706) 245-2844 or email us: [financial\\_aid@ec.edu](mailto:financial_aid@ec.edu)

## FORT VALLEY STATE UNIVERSITY

**Address:** Office of Recruitment and Admissions  
1005 State University Drive  
Fort Valley, GA 31030-4313

**Phone:** (478) 825-6520

**Email:** [admissions@fvsu.edu](mailto:admissions@fvsu.edu)

**Websites:** [www.fvsu.edu](http://www.fvsu.edu) | <https://www.fvsu.edu/futurestudents>

The Office of Financial Aid (OFA) is a resource for prospective and current undergraduate and graduate students seeking scholarship funding. The primary task of the Office of Financial Aid is to administer university-wide merit-based scholarships. In addition, we serve as a clearinghouse for scholarships awarded by academic departments and outside agencies. Our goal is to support the University's mission of recruiting and retaining high-achieving students who help to enrich and diversify the academic environment of The Fort Valley State University. Unless noted, the scholarships listed are awarded for the fall semester and assume students will be in residence for a full academic year after the scholarship is awarded.

The Fort Valley State University has several scholarships that have been made available through the generous donations of alumni and friends of the University. The scholarships listed are available for incoming freshmen who plan to attend Fort Valley State University. Students who wish to be considered for scholarships must file a Free Application for Federal Student Aid (FAFSA) by the March 1 priority deadline. Scholarships are then awarded based upon merit and available funding. Scholarship eligibility, criteria, and amounts may change at any time without prior notice.

For more information about scholarships, visit <https://www.fvsu.edu/scholarships>

*Disclaimer: Scholarship types and award amounts are subject to change at any time at the discretion of the institution awarding the scholarship. Please confirm the details of the scholarship prior to applying.*



FIND YOUR SPARK AT  
FORT VALLEY STATE UNIVERSITY

**#1** THE **PUBLIC  
HBCU IN  
GEORGIA!**

**DON'T MISS OUT ON OUR  
SCHOLARSHIP OPPORTUNITIES:**

**FVSU BORDER  
WAIVER**

The FVSU Border Waiver is a scholarship offered to residents of states bordering Georgia, such as Alabama, Florida, North and South Carolina, and Tennessee. The scholarship waives out-of-state fees, allowing students to pay in-state tuition costs.

**PRESIDENTIAL  
EXCELLENCE  
SCHOLARSHIP**

The USDA 1890 Scholarship is a \$32,480 offered over four years to students interested in studying agriculture, food, natural resources sciences, and other agriculture-based disciplines.

**USDA 1890  
SCHOLARSHIP**

The USDA 1890 Scholarship is a \$32,480 offered over four years to students interested in studying agriculture, food, natural resources sciences, and other agriculture-based disciplines.



For more information on scholarships and tips on how to apply to FVSU visit [FVSU.edu/Apply](https://www.fvsu.edu/Apply)



## FREED-HARDEMAN UNIVERSITY

**Address:** 158 East Main Street  
Henderson, TN 38340

**Phone:** (800) FHU-FHU1

**Websites:** <https://www.fhu.edu/> | <https://www.fhu.edu/finaid/scholarships>

The following information is about scholarships and discounts that are offered by the University. Unless otherwise stated, scholarships and discounts are subject to an institutional cap of \$15,000 per year on total unfunded institutional aid per student. All awards are subject to the availability of funds. Criteria are subject to change at any time.

Please be mindful of our discount application deadline. April 15 for first-time freshmen.

*Disclaimer: Scholarship types and award amounts are subject to change at any time at the discretion of the institution awarding the scholarship. Please confirm the details of the scholarship prior to applying.*

## **Merit Scholarships**

Merit scholarships range from \$3,000 to \$11,000 per year. All applicants with a minimum national ACT composite score of 19 (990 SAT: Reading/Writing and Math) and at least a 3.00 high school GPA are automatically considered for this scholarship. The following forms must be submitted to the Office of Admissions:

1. Completed application for admission
2. A three-year transcript from high school
3. National ACT or SAT test score (No residual score)

Awarding is subject to the availability of funds and preference will be given to those that submit their required forms early. Early awarding begins in August or September of the senior year of high school. First-time Freshmen and students who transfer fewer than 30 hours (not including dual enrolled, CLEP, or AP hours) must maintain at least a 2.75 cumulative GPA during the first academic year to maintain merit scholarship money. Upperclassmen and students who transfer more than 30 hours must maintain a 3.0 cumulative GPA. The student's college cumulative GPA is reviewed after each semester. Cannot be combined with athletic scholarships.

## **Trustees' Scholarship**

The Trustees' Scholarship is \$15,000 per year. All applicants with a minimum national ACT composite score of 30 (1360 SAT; Reading/Writing and Math only) and a 3.00 high school GPA. The Trustees' scholarship will be applied to a maximum of eight regular semesters, provided the student maintains a 3.4 college cumulative GPA which is reviewed at the end of each semester.

The required forms (application for Admissions, 3-year transcript, and ACT/SAT test scores) must be submitted to the Office of Admissions. Awarding is subject to the availability of funds. Students receiving this award must be full-time and live in university housing or a lesser award will be given. Cannot be combined with athletic scholarships.

## **National Merit Finalists**

Students receiving this honor will receive the Trustees' scholarship. To receive this scholarship please send your official report to the Office of Admissions. Students awarded this scholarship must maintain a 3.4 cumulative GPA that will be reviewed at the end of every semester. Students receiving this award must be full-time and live in university housing or a lesser award will be given. Awarding is subject to the availability of funds.

*Disclaimer: Scholarship types and award amounts are subject to change at any time at the discretion of the institution awarding the scholarship. Please confirm the details of the scholarship prior to applying.*

## **FHU Promise**

The FHU Promise program guarantees that qualified, first-time freshman and transfer students will not have to pay or owe more than \$9,500 their freshman year after all other scholarships, discounts, and grants have been applied. This amount will be adjusted based on Stafford Loan eligibility in subsequent years. All applicants that have a minimum national ACT composite score of 21 (1060 SAT; Reading/Writing and Math), achieve a 3.0 high school GPA, receive a federal PELL grant award, and be admitted before April 15 will be automatically considered for this scholarship. Cannot be combined with athletic scholarship or employee remission. Awarding is subject to the availability of funds.

## **Participating School Discount**

The University awards up to a \$5,000 discount annually to any student who graduates from or whose parent is full-time faculty or staff at one of the k-12 schools with membership in the National Christian School Association (NCSA). Any student who graduates from and has a parent who is a full-time employee of a participating k-12 school, is eligible for up to a \$5,000 discount annually. Any student whose parent(s) is full-time faculty/staff at a participating christian college/university is eligible for up to a \$10,000 discount annually. Students are eligible for one discount. These discounts may be combined with other institutional awards (excluding discounts) up to \$15,000 annually. The form for the parent portion of the discount is linked here.

Please be mindful of our discount application deadline. April 15 for first-time freshmen and June 15 for transfers. Awarding is subject to availability of funds and cannot be combined with athletic scholarships.

## **Christian Ministers Discount**

The University awards up to a \$5,000 discount to students who are children of full-time Church of Christ pulpit or youth ministers. Full-time means a 40 hour per week paid position. This generally excludes “vocational” ministers who are ministers with other full-time gainful employment. Ministers must have been employed full-time as a minister at least five years prior to receiving the discount. The Christian Ministers Discount Form must be completed and signed by two elders of the respective congregation. The form must be submitted to the Office of Student Financial Services by April 15. Students are eligible for one discount. These discounts may be combined with other institutional awards (excluding discounts) up to \$15,000 annually. Awarding is subject to availability of funds and cannot

*Disclaimer: Scholarship types and award amounts are subject to change at any time at the discretion of the institution awarding the scholarship. Please confirm the details of the scholarship prior to applying.*

be stacked with athletic scholarships. The student must be full-time and live on-campus, meaning they live in University housing and participate in a meal plan. Graduate students are not eligible.

### **Church Scholarship Matching Program**

The FHU Church Scholarship Match Program will match any scholarship awarded by a church to a first-time student (incoming freshman or transfer student) up to a total of \$2,500 a year.

To be eligible for this award, the student must meet the following criteria:

- Be admitted to FHU as a new full-time freshman or transfer student living on-campus after Spring 2016.
- Enroll in an undergraduate degree program.
- The church scholarship must be awarded for the same academic year and as part of a bona fide scholarship program operated by the church (i.e., the scholarship should not be funded solely by the student or relatives of the student). Tuition payments by the student or the relatives of the student to a church with instructions to forward the funds to FHU or other “pass-through” arrangements are not eligible for a match.
- This award may be stacked above the institutional aid cap up to the comprehensive charge. If a combination of this award and any other scholarship or discount exceeds the cost of the comprehensive charge at FHU (Henderson), this award may be reduced or canceled. The maximum amount that a student can receive in the FHU Church Scholarship Match Award is \$2,500. If a student receives more than \$2,500 in church scholarships, the FHU Church Scholarship Match Award will not exceed \$2,500.

This matching award is renewable for up to four years, and is subject to review and adjustment by the Office of Student Financial Services each year. The student must continue to receive a church scholarship equal to or greater than the matching award, take at least 12 hours each semester and maintain at least a 2.75 cumulative GPA during the first academic year, and at least a 3.0 cumulative GPA each year thereafter.

### **Endowed Scholarships**

Endowed scholarships are available and awards are given based on criteria designated by the donor. All students are automatically considered for

*Disclaimer: Scholarship types and award amounts are subject to change at any time at the discretion of the institution awarding the scholarship. Please confirm the details of the scholarship prior to applying.*

Endowed Scholarships. There is not an additional application process for these scholarships. Endowed Scholarships' purpose is to support merit awards and do not stack on top of merit awards. Amounts and recipients of these awards will not necessarily be the same from year to year. Some of the endowed scholarships are need-based as well. The Office of Student Financial Services will match students to endowed awards based on the criteria specified by the donor. To be eligible for the Endowed Scholarships, the FAFSA must be completed.

### **Honors Scholarship Competition**

The Honors Scholarship is stackable on top of the Trustees' Scholarship up to the total cost of FHU's Comprehensive charge (\$25,000 for the 2023-2024 school year).

This scholarship is awarded based on a competition held each Fall semester. To be eligible to participate in the FHU Honors Scholarship Competition, students must:

Apply to FHU as a new full-time, residential incoming freshman on the Henderson campus.

Submit an official high school transcript and official results of either the SAT or the ACT.

Qualify for the Trustees' Scholarship by achieving: An overall weighted minimum 3.00 high school GPA, AND a minimum of a 30 ACT Composite Score (1360 SAT), exclusive of the essay and optional subject area battery tests.

Apply for the Honors Program by submitting the Freshman Honors Application. Cannot be combined with athletic scholarship or employee remission.

For more information about scholarship opportunities, visit <https://www.fhu.edu/finaid/scholarships>

## FURMAN UNIVERSITY

**Address:** Office of Admissions  
3300 Poinsett Hwy  
Greenville, SC 29613

**Phone:** (864) 294-2030

**Email:** [enroll@furman.edu](mailto:enroll@furman.edu)

**Website:** [www.furman.edu](http://www.furman.edu)

As a Furman student, there are a number of scholarships that you can pursue to fund your education. These types of aid are gifts, meaning you do not have to repay them after graduation.

We offer a number of scholarships to students who demonstrate a strong ability to succeed based on their academic achievements, commitment to the community, passion for leading, or exemplary talents. Furman's scholarships recognize those students who show the potential and promise to make an impact in Furman's community.

**Merit Scholarships:** Merit-based scholarships support students who show great potential to make a positive impact on the Furman community. In awarding merit-based scholarships, we consider:

- GPA
- Strength of curriculum
- Test scores (if submitted)
- Essay
- Co-curricular activities

Your application for admission also serves as your application for merit-based scholarships.

For more information about merit scholarships, visit <https://www.furman.edu/financial-aid/aid-types/merit-based-scholarships/>

For information about additional scholarships, visit <https://www.furman.edu/financial-aid/aid-types/other-scholarships/>

# GEORGIA SOUTHWESTERN STATE UNIVERSITY

**Address:** 800 GSW State University Drive  
Americus, GA 31709

**Phone:** (877) 871-4594

**Websites:** [www.gsw.edu](http://www.gsw.edu)  
<https://www.gsw.edu/financial-aid/scholarships>

Georgia Southwestern offers numerous scholarships for freshmen that are funded through the generosity of our alumni, parents, former faculty members, and friends of the university. To apply for non-guaranteed scholarships, an incoming freshman must be accepted to Georgia Southwestern and complete the Beginning Freshmen Scholarship Application.

## **Freshmen Scholarships**

With over \$1 million in scholarships disbursed each year, Georgia Southwestern offers one of the most generous scholarship programs in the state. Beginning freshmen have the opportunity to apply for numerous scholarships funded through the generosity of our alumni, parents, former faculty members, and friends of the University.

To apply for scholarships, the student must be accepted and complete the appropriate application through the Scholarship Application Portal using their GSW CanesNet credentials unless otherwise noted.

## **President Jimmy Carter Leadership Program — Mix Scholars:**

The President Carter Leadership Program honors the life and legacy of GSW alumnus and former U.S. President Jimmy Carter. Admitted freshmen students who have demonstrated a strong academic, service and leadership background are strongly encouraged to apply. Students accepted into this unique, four-year honors program become Mix Scholars and receive a \$2,000 scholarship. Recipients must meet program requirements, maintain a 3.0 grade point average or higher, and live on campus the first two years in order to extend the scholarship annually for all four years. Leadership Program Requirements: Minimum of 1100 total on the SAT or a composite score of 22 on the ACT; 3.0 High School GPA; and Completion of the Carter Leadership Application by February 1st deadline

## **Goizueta Latino Student**

The Goizueta Foundation of Atlanta established a scholarship to provide need-based assistance annually to Hispanic/Latino students whose

*Disclaimer: Scholarship types and award amounts are subject to change at any time at the discretion of the institution awarding the scholarship. Please confirm the details of the scholarship prior to applying.*

families currently reside in the United States. Students must complete the GSW Scholarship Application. Scholarship is available to both documented and undocumented students; \$1000 - \$1500 per academic year and renewable with application; Application deadline is May 15th; Awards are based partially on Financial need.

For more scholarship opportunities, visit <https://www.gsw.edu/financial-aid/scholarships-aid/scholarships/freshman-scholarships>

## KENNESAW STATE UNIVERSITY

**Address:** Office of Undergraduate Admission  
3391 Town Point Drive, MD 9111  
Suite 1000  
Kennesaw, GA 30144

**Phone:** (770) 423-6300

**Email:** [KSUadmit@kennesaw.edu](mailto:KSUadmit@kennesaw.edu)

**Website:** [www.kennesaw.edu](http://www.kennesaw.edu)

### Scholarships

Kennesaw State University is proud to offer scholarships to incoming freshmen, incoming transfer and currently enrolled students.

Kennesaw State University scholarship funds come in two forms:

Internal funds provided by donors directly to support Kennesaw State University students.

External funds that are not specifically tied to KSU but are open for all eligible students to apply.

Researching and applying for scholarships can be daunting, so KSU has provided a tool that makes this process much simpler: ScholarshipUniverse. ScholarshipUniverse is a one-stop-shop search tool that allows you to find and apply for scholarship funds.

While reviewing ScholarshipUniverse, you will see scholarships that mention phrases such as “need-based” and “merit-based.” Need-based scholarships are awarded to students who demonstrate financial need, as identified by completing the FAFSA. Merit-based scholarships are awarded based on academic achievement, leadership skills, extracurricular activities and community service.

To explore scholarship opportunities, application information, and deadlines, visit ScholarshipUniverse at <https://www.kennesaw.edu/financial-aid/scholarships/students.php>

*Disclaimer: Scholarship types and award amounts are subject to change at any time at the discretion of the institution awarding the scholarship. Please confirm the details of the scholarship prior to applying.*



## MISSISSIPPI COLLEGE

**Address:** Financial Aid  
200 S Capitol Street  
Clinton, MS 39056

**Phone:** (601) 925-3000

**Email:** financialaid@mc.edu

**Website:** www.mc.edu

Freshmen are awarded academic scholarships based on a combination of their standardized test score (ACT/SAT/CLT) and their high school GPA.

There is no deadline for academic scholarships, meaning this award can increase, according to our matrix, up until the time you enroll. For that reason, we encourage students to take standardized tests multiple times up until the point of enrollment.

Amounts below are awarded to students per year as long as the student maintains a minimum of a 2.5 GPA.

We understand the obstacles that can get in the way of making your dreams a reality. Funding shouldn't be one of them. MC offers the Speed Scholarship to Mississippi residents, but we know not everyone will qualify. That's why we also offer academic scholarships to incoming freshmen and transfer students. You're working hard to reach your goals and we want to reward you for it. There's something available to students of all achievement levels. Use the calculator below to determine the academic scholarships that you qualify for. You may just discover other scholarship opportunities available to you.

Find the calculator here: <https://www.mc.edu/offices/financial-aid/scholarships/academic-scholarships#calculator>

Additional scholarship opportunities are the MC Select Scholars Competition, Transfer Scholarship Competition, Need-Based Grants, and Music/Band Scholarships. For more information on scholarship opportunities available, visit: <https://www.mc.edu/offices/financial-aid/scholarships>

*Disclaimer: Scholarship types and award amounts are subject to change at any time at the discretion of the institution awarding the scholarship. Please confirm the details of the scholarship prior to applying.*

## PIEDMONT COLLEGE

**Address:** Office of Financial Aid  
1021 Central Avenue  
Demorest, GA 30535

**Phone:** (800) 277-7020

**Email:** [finaid@piedmont.edu](mailto:finaid@piedmont.edu)

**Website:** <https://www.piedmont.edu/>

Across Piedmont's 20 undergraduate campuses, approximately 4,100 first-year students receive a University scholarship. One of the most dynamic small-colleges in the Southeast, Piedmont's 100-acre residential campus is in Demorest, Georgia, in the foothills of the north Georgia mountains. Our Athens campus is designed for commuting students and is in the heart of Georgia's Classic City. Founded in 1897, Piedmont is a comprehensive liberal arts institution and offers a variety of career-oriented majors in the arts and sciences, business, education, and nursing. Total enrollment at both campuses is approximately 2,600 students.

Piedmont offers the personal and immersive benefits of a small, private college education at the cost of a large flagship public school.

Financing your college career is a collaborative effort here at Piedmont. Merit scholarships can assist with the overall cost of your college degree. Nearly 1,900 students, upon acceptance, received academic scholarships, grants, and part-time work-study aid valued at approximately \$12.5 million in the most recent academic year.

### **Institutional Scholarship Programs**

The scholarship and grant program at Piedmont University is designed to assist a wide range of students from various backgrounds. Funds are awarded annually to undergraduate students who exhibit exceptional academic and leadership skills, as well as to those who are in need of financial support and have demonstrated an enthusiasm for learning. Any scholarships above the cost of room, board, and tuition will be returned to the scholarship fund. Annual awards are based on the availability of funds.

At Piedmont University, institutional scholarships and grants are primarily awarded to undergraduate students. Undergraduate institutional scholarships cannot be applied to programs that lead to a master's degree. Students enrolled in programs that move from undergraduate to graduate-level without graduating with a bachelor's degree such as Athletic Training will have aid based on their current academic level.

*Disclaimer: Scholarship types and award amounts are subject to change at any time at the discretion of the institution awarding the scholarship. Please confirm the details of the scholarship prior to applying.*

## **Athens Scholarship**

This scholarship was established by the President of Piedmont University. The number of recipients varies from year to year. Undergraduate recipients are required to enroll full time, attend the Athens Campus and be actively involved on campus. To be eligible for renewal, students are required to maintain a 2.5 cumulative GPA at the end of each semester.

## **Academic Major Scholarships**

The School of Arts and Science, Education, Business, and Nursing offer scholarships based on academic performance and dedication to the field of study. All Demorest undergraduate students can apply for these scholarships after they have declared a major. Full-time enrollment is required. A scholarship committee within each school will determine recipients upon the approval of the Vice President for Academic Affairs.

## **Century Scholarship**

In recognition of Piedmont University's 124-year history, this award recognizes undergraduate boarding students for their outstanding academic and extra-curricular accomplishments. Annually renewable, the scholarship rewards students who actively participate in classroom, campus, and community activities that demonstrate good citizenship and character development during their high school or college careers. Specific award amounts and the number of recipients may vary depending on available institutional resources and individual qualifications. To continue receiving this award, students must maintain a minimum 2.5 cumulative GPA each semester, reside on campus, and continue active involvement in campus and community activities throughout their undergraduate years at Piedmont University.

## **Deans Scholarship**

This scholarship was established by the Board of Trustees of Piedmont University. The number of recipients varies on a yearly basis. Undergraduate recipients are required to live in campus housing and be actively involved on campus. To be eligible for renewal, students are required to maintain a minimum 2.75 cumulative GPA at the end of each semester.

## **Departmental Scholarships**

The School of Arts and Science, Education, Business, and Nursing offer scholarships based on academic performance and dedication to the field of study. Departmental scholarship yearly allocations are depended on budget approval. Full-time enrollment is required. A scholarship committee within each school will determine recipients upon the approval of the Vice President for Academic Affairs and Director of Financial Aid.

For more scholarship opportunities and information, please visit <https://www.piedmont.edu/admission-aid/financial-aid/scholarships/>

*Disclaimer: Scholarship types and award amounts are subject to change at any time at the discretion of the institution awarding the scholarship. Please confirm the details of the scholarship prior to applying.*

# SAVANNAH COLLEGE OF ART AND DESIGN

**Address:** Office of Admissions  
P.O. Box 2072  
Savannah, GA 31402  
**Phone:** (912) 525-5100  
**Email:** admissions@scad.edu  
**Website:** www.scad.edu

The Savannah College of Art and Design was founded in 1978 by Richard G. Rowan, Paula S. Wallace, May L. Poetter, and Paul E. Poetter to provide college degree programs not previously available in southeast Georgia and to create a specialized professional art college to attract students from throughout the United States and abroad. The curriculum was established with dual goals of excellent arts education and effective career preparation for students. Today, with multiple locations and online distance education offerings, SCAD continues to assiduously adhere to these goals.

Incoming students may be offered a scholarship or other awards from SCAD based on demonstrated academic and/or co-curricular achievement, including leadership, volunteer work, community service or involvement, and artistic accomplishment. Scholarships are available to U.S. and non-U.S. citizens. Students who wish to be considered for achievement scholarships may be asked to provide additional materials as part of their application for admission.

Financial need, as indicated by completion of the FAFSA or other documentation, is also taken into consideration for need-based scholarships and awards.

Recipients may accept additional scholarships and awards from other sources, as well as additional forms of financial aid, if qualified.

## **SCAD academic scholarships**

- Amount: Varies
- Criteria: Must demonstrate academic achievement.

## **SCAD achievement scholarships**

- Amount: Varies
- Criteria: Must demonstrate overall achievement.

SCAD Scholarships for entering students: <https://www.scad.edu/admission/financial-aid-and-scholarships/scholarships>

*Disclaimer: Scholarship types and award amounts are subject to change at any time at the discretion of the institution awarding the scholarship. Please confirm the details of the scholarship prior to applying.*

## THE BAPTIST COLLEGE OF FLORIDA

**Address:** 5400 College Drive  
Graceville, FL 32440  
**Phone:** (850) 263-3261  
**Website:** <https://www.baptistcollege.edu/>

The Baptist College of Florida participates in the full range of state and federal aid programs. In addition, several other programs are offered to help students meet the cost of attending the college. Financial assistance offered can be in the form of grants, employment, loans, or scholarships. The applicant's financial need, academic achievement, community and school service, and potential achievement may be considered in determining eligibility for different programs.

Institutional funds include scholarships from the Florida Baptist Convention and The Baptist College of Florida (Florida Ministerial Aid), and over 100 institutional scholarships. Christ is Our Salvation Loan fund and BCF short-term loans are available to qualifying students.

Outside sources include Alabama Baptist Foundation, Georgia Baptist Foundation, Lois B. & John F. Hipps Scholarship, L. Don Miley Scholarship, Alabama and Florida Prepaid Tuition Programs.

Veterans Administration and Vocational Rehabilitation benefits are accepted at our institution.

Tuition Assistance (TA) is accepted at our institution. To begin this process, service members must speak with a counselor from their branch of the military. The counselor will help establish an education plan so the service member can move along to the next step of his/her personal and professional journey.

For more information about available scholarships, visit <https://www.baptistcollege.edu/scholarships>

# THE UNIVERSITY OF MISSISSIPPI (OLE MISS)

**Address:** Office of Financial Aid  
257 Martindale-Cole Student Services Center  
University, MS 38677

**Phone:** (800) OLE-MISS

**Email:** [admissions@olemiss.edu](mailto:admissions@olemiss.edu)

**Websites:** [www.olemiss.edu](http://www.olemiss.edu) | [www.finaid.olemiss.edu/scholarships](http://www.finaid.olemiss.edu/scholarships)

The University of Mississippi has many scholarships that have been made available through the generous donations of alumni and friends of the university. The scholarships listed below are available for incoming freshmen and transfer students that plan to attend The University of Mississippi beginning Fall 2023-2024.

Transfer students should submit a University of Mississippi Admission application, and submit the online Community College Transfer Scholarship Application, and submit a transcript that includes three semesters of grades. All students must be admitted to The University of Mississippi to be considered for scholarships. Some departmental and professional school awards are not included in this listing. Scholarship eligibility, criteria, and amounts may change at any time without prior notice. These awards are not eligible for students with a prior bachelor's degree.

We are proud to award students who have achieved academic excellence. We hope that for all students, you will progressively grow and succeed in both your personal and academic endeavors while at The University of Mississippi.

## Academic Merit Scholarships

**Award Amount:** Please see the charts at <https://finaid.olemiss.edu/scholarships/#8> for award amounts, based on your residency status. These awards are fixed amounts that are renewable for up to four years as long as all terms and conditions are met. Also note:

- At the 32 and 33+ ACT levels, the non-resident scholarship will be set to the value of the non-resident fee in Year One and capped at that amount for all undergraduates (including Pharmacy) for the life of the scholarship.
- Similarly, at the 33+ ACT level, the scholarship stipend will be set to the value of tuition in Year One and capped at that amount for all undergraduates (including Pharmacy) for the life of the scholarship.)
- Mississippi residents who earn at least a 3.5 high school GPA and 23

*Disclaimer: Scholarship types and award amounts are subject to change at any time at the discretion of the institution awarding the scholarship. Please confirm the details of the scholarship prior to applying.*

ACT score (or the SAT/SAT-R equivalent) are eligible for the additional 1848 scholarship. These award amounts are included on the Mississippi Residents chart.

- **Eligibility:** Entering Freshman with minimum 3.0 high school GPA and 23 ACT score for Mississippi residents or 25 ACT score for non-residents (or the SAT/SAT-R equivalent). Beginning in the 2021-2022 academic year, the university will accept super scores (highest subject tests from ACT/SAT when scores from multiple test dates are submitted for admission). Subject test scores must be from the same exam type (ACT or SAT) to create a super score.

- **How to Apply:** Gain admission to The University of Mississippi.

- **Deadline:** Qualifying tests must be taken prior to enrollment as a new freshman at The University of Mississippi.

### **Academic Excellence Scholarship National Merit Semifinalist/Finalist Award**

**Award Amount:** Includes full tuition scholarship and the standard cost of a double occupancy room in a campus residence hall. Also covers full non-resident fee, if applicable. Please be advised that these awards are renewable for up to four years as long as all terms and conditions are met. These cannot be stacked with the Academic Merit awards.

- **Eligibility:** Entering freshmen with National Merit Semifinalist/Finalist status and a 3.0 or higher GPA.

- **How to Apply:** Gain admission to The University of Mississippi. Provide documentation of National Merit standing.

- **Deadline:** Follows National Merit announcement timeline.

### **National Merit Finalist Award**

**Award Amount:** \$4,000 (\$1,000 per year)

- **Eligibility:** Entering freshman with finalist status and selection of Ole Miss as first choice and who are not receiving a National Merit Corporate award

- **How to Apply:** Gain admission to The University of Mississippi. Select Ole Miss as first-choice school with National Merit office.

- **Deadline:** Follows National Merit announcement timeline.

*Disclaimer: Scholarship types and award amounts are subject to change at any time at the discretion of the institution awarding the scholarship. Please confirm the details of the scholarship prior to applying.*

## **Barnard Scholarship**

**Award Amount:** \$20,000 (\$5,000 / year)

- **Eligibility:** Entering freshmen who have achieved National Merit Finalist status and have a 3.0 or higher high school GPA.
- **How to Apply:** Gain admission to The University of Mississippi. Provide documentation of National Merit standing.
- **Deadline:** Follows National Merit announcement timeline.

For more scholarship information, visit <https://finaid.olemiss.edu/scholarships/>

## **THE UNIVERSITY OF SOUTHERN MISSISSIPPI**

### **Hattiesburg Campus:**

118 College Drive  
Hattiesburg, MS 39406-0001  
(601) 266-1000

### **Gulf Park Campus:**

730 East Beach Blvd  
Long Beach, MS 39560  
(228) 865-4500

**Website:** <https://www.usm.edu/>

The General Application and all university scholarships for the 2024-2025 academic year, including admission-awards, will be available October 1, 2023. We encourage students still needing funding for the 2023-2024 academic year to utilize iGrad for additional scholarships.

The GO System houses a variety of scholarship opportunities for incoming and continuing students at Southern Miss at both the undergraduate and graduate level. Once admitted, all students can search, review requirements, apply and accept their University scholarships in one web portal! Just log in with your SOAR credentials to get started.

The general application and all recommended opportunities should be completed each year by FEBRUARY 15TH to be considered for scholarships funded through the USM Foundation, including

*Disclaimer: Scholarship types and award amounts are subject to change at any time at the discretion of the institution awarding the scholarship. Please confirm the details of the scholarship prior to applying.*



scholarships for specific majors, interest groups, campus involvement, and the Southern Miss Alumni Association. Students can complete the General Application beginning each October 1st to be considered for awards for the upcoming academic year.

For more information about scholarships, visit <https://www.usm.edu/undergraduate-scholarships/index.php>

## UNIVERSITY OF WEST GEORGIA

**Address:** University of West Georgia  
Office of Undergraduate Admissions  
1601 Maple Street  
Carrollton, GA 30118

**Phone:** (678) 839-5000

**Email:** [admissions@westga.edu](mailto:admissions@westga.edu)

**Website:** [www.westga.edu](http://www.westga.edu)

A University of West Georgia education is an investment in your career, and your goals, and your future. You've got the drive to make it happen, and we've got the resources to put it within reach. Start the scholarship application process by completing your FAFSA.

### EDGE Scholarship

The EDGE Scholarship is available to any incoming first-time, full-time freshman student who:

- Has a 2.5 or higher academic high school GPA
- Is a permanent resident of Alabama, Florida, North Carolina, South Carolina, or Tennessee and provides verification of lawful presence
- Enrolls at UWG directly from high school

#### Award Amounts

In addition to in-state tuition, EDGE scholarship recipients will receive awards based on GPA.

For more information on qualifications for merit scholarships, visit <https://www.westga.edu/student-services/financialaid/scholarships.php>

For additional scholarship opportunities, visit [https://westga.scholarships.ngwebsolutions.com/CMXAdmin/Cmx\\_Content.aspx?cpId=896](https://westga.scholarships.ngwebsolutions.com/CMXAdmin/Cmx_Content.aspx?cpId=896)

*Disclaimer: Scholarship types and award amounts are subject to change at any time at the discretion of the institution awarding the scholarship. Please confirm the details of the scholarship prior to applying.*

## WOFFORD COLLEGE

**Address:** Director of Admissions  
429 North Church Street  
Spartanburg, SC 29303-3663

**Phone:** (864) 597-4135

**Website:** [www.wofford.edu](http://www.wofford.edu)

All students are considered for merit-based scholarships through submission of the completed application for admission. Scholarships range from \$5,000 to \$30,000 per year and are renewable for up to three years after your first year, if eligibility requirements defined in the student's financial aid award letter are met. These awards are based on academic merit, leadership and service to the community.

All students are considered for merit-based scholarships. The following special scholarships, however, require either a separate application or an invitation or nomination to apply.

- Army ROTC
- Bonner Scholars
- International Scholars
- Fine and Performing Arts Scholarships
- The Rosaline Sallenger Richardson Fine Arts Endowed Scholarship Fund
- Richardson Family Scholarship

For more information about scholarships, visit <https://www.wofford.edu/admission/scholarships>

### **Becoming a Wofford Scholar**

Wofford Scholars is the largest merit-based scholarship program at Wofford College. Each February, high school counselors are invited to submit nominations for the Wofford Scholars Program. The nomination period for qualified students begins in February of the junior year and should be completed by September 15. Extensions to the nomination deadline can be made on a case by case basis. (Note: To receive Wofford Scholars Nominee certificates for junior awards days, we must receive your nominations by April 1.) To qualify as a Wofford Scholar nominee, a student should be ranked in the top 10 percent of the class and have achieved a combined score of 1300 (Critical Reading and Math) on the SAT/PSAT or a 28 on the ACT/PLAN.

*Disclaimer: Scholarship types and award amounts are subject to change at any time at the discretion of the institution awarding the scholarship. Please confirm the details of the scholarship prior to applying.*

## **Program Information**

Since 1949, outstanding high school students have been competing at Wofford for scholarships based on leadership, academic achievement and character. Each year the college receives nominations for the Wofford Scholars Program from guidance counselors across the United States. From these nominees, students are selected and invited to compete for a variety of scholarships. Wofford's faculty/staff, students and alumni eagerly anticipate meeting the best and brightest young people in the country on Scholars Day.

To be competitive, nominees should:

- Rank in the top 10 percent of their class
- Score at least 1300 on the SAT/PSAT or 28 on the ACT/PLAN
- Be active in leadership and service roles in their school and/or community

### **Becoming a Wofford Scholar**

Apply Early Decision or Early Action and submit all application materials by the corresponding deadline. While still eligible for many merit scholarship options, Regular Decision applications will not be considered for Wofford Scholars.

Complete a Wofford Scholars Interview in November 2023 (registration to open in September).

To be eligible, nominees must submit the following items:

- The Common Application (including Secondary School Report Form)
- An official transcript
- A letter of recommendation

If you are a high school junior, you will find that the Wofford Scholars Program can be an excellent way to learn more about the Wofford community and gain assistance in financing your education at an outstanding academic institution. If you are a high school counselor, you have the opportunity to help seniors in your school compete for scholarships worth between \$60,000 and \$250,000 over a four-year period.

For more information on the Wofford Scholars Program, visit <https://www.wofford.edu/admission/scholarships/wofford-scholars>

# IN-STATE COMMUNITY COLLEGES

## ENTERPRISE STATE COMMUNITY COLLEGE

**Address:** ESCC Admissions Office  
600 Plaza Drive  
Enterprise, AL 36331  
**Email:** admissions@escc.edu  
**Telephone:** (334) 347-2623  
**Website:** <https://www.escc.edu/admissions/>

Enterprise State Community College and the ESCC Foundation offer a rich variety of scholarship opportunities to outstanding students. Scholarships are awarded for academic performance, technical promise, career interests, and participation in the fine arts, and leadership activities.

Successful applicants must submit a complete scholarship application packet before the deadline, March 1st. Applicants are urged to complete their application packets one week before the deadline to avoid last-minute processing problems.

Visit <https://escc.edu/admissions/scholarships/> for information about available scholarships, application information, and deadlines.

### ESCC SCHOLARSHIPS

#### **Presidential, Academic, Career, and Technical**

The College offers a variety of scholarships open to students entering the College directly from high school as well as those returning to college. Criteria for these scholarships vary but generally include academic performance and/or field of study.

Presidential Scholarships are reserved for valedictorians and salutatorians of high schools in the College's service area. Academic Scholarships are awarded to students who plan to receive an A.A. or A.S. degree from ESCC and/or transfer to a four-year institution pursuing a bachelor's degree. High school students must be ranked in the top 25% of their graduating class. Current and past ESCC students must have completed at least 12 semester credit hours at ESCC and have earned at least a cumulative 3.0 GPA.

Career and Technical Scholarships are awarded to students who plan a career

*Disclaimer: Scholarship types and award amounts are subject to change at any time at the discretion of the institution awarding the scholarship. Please confirm the details of the scholarship prior to applying.*

in one of the career or technical fields of study offered at ESCC. Students must have at least an 80 average in their high school grades or have passed the GED test. Current and past ESCC students must have completed at least 12 semester credit hours at ESCC and have earned at least a cumulative 3.0 GPA.

These scholarships may be awarded for up to two academic years, provided the recipient maintains the required grade point average and completes the minimum required credit hours per semester. Scholarship renewal for the sophomore year is not automatic. Students who wish to renew their scholarships must reapply each year by March 1.

### **Fine Arts**

Students talented in music, visual arts, and theatre are invited to apply and audition for a Fine Arts Scholarship. Enterprise State Community College offers scholarships for participation in the ESCC Concert Band, ESCC Concert Choir, Entertainers Show Choir, Theatre, and Visual Arts. These fine arts activities provide cultural enrichment for the College and surrounding communities.

Students must take a minimum of 12 credit hours and must maintain a cumulative grade point average of 2.5.

### **Leadership**

ESCC offers leadership scholarships to a limited number of students who are interested in participating in student leadership organizations. Recipients are required to maintain at least a 2.50 cumulative GPA.

The W.O.W. Team (Welcoming Orientation Weevils) conducts orientation activities for new students on the Enterprise Campus.

The ESCC Ambassadors are the official College student hosts and hostesses for the Enterprise campus, giving tours and serving in a multitude of capacities both on the Enterprise campus and in the community.

The ESCC Aviators serve as the official College hosts and hostesses on the Alabama Aviation College, A unit of ESCC campus at Ozark.

### **Athletics**

These scholarships are available for students attending classes at the Enterprise Campus only. Athletic scholarships in men's and women's basketball, men's baseball, and women's softball are awarded to students

*Disclaimer: Scholarship types and award amounts are subject to change at any time at the discretion of the institution awarding the scholarship. Please confirm the details of the scholarship prior to applying.*

who demonstrate ability in these sports. Tryouts are required.

If awarded, these scholarships are for one year (renewable) and only applicable if the recipient participates in and is declared eligible in the sport for which he or she is signed. Students on athletic scholarships must abide by the same satisfactory academic progress standard expected of all students on financial aid.

### **THE ESCC FOUNDATION SCHOLARSHIPS**

The Enterprise State Community College Foundation was established in 1982 for raising private funds to help meet the needs of the college. The foundation annually provides scholarships that are based on the same general criteria as the ESCC academic scholarships. Additionally, several named scholarships with specific criteria have been established by foundation supporters in honor or in memory of specific individuals or organizations.

For information about ESCC Foundation Scholarships, visit <https://esc.edu/admissions/scholarships/>



OUR NAME IS OUR MISSION.

Main Office  
One Commerce Street, Suite 200  
Montgomery, AL 36104  
334.223.5800

Montgomery East Banking Center  
7256 Halcyon Park Drive  
Montgomery, AL 36116  
334.223.5600

[www.servisfirstbank.com](http://www.servisfirstbank.com) | Member FDIC | Equal Housing Lender

*Disclaimer: Scholarship types and award amounts are subject to change at any time at the discretion of the institution awarding the scholarship. Please confirm the details of the scholarship prior to applying.*

## SHELTON STATE COMMUNITY COLLEGE

### **Martin Campus**

9500 Old Greensboro Road  
Tuscaloosa, AL 35405  
(205) 391-2211

### **C.A. Fredd Campus**

3401 Martin Luther King Jr. Blvd.  
Tuscaloosa, AL 35401  
(205) 391-2611

**Email:** [admissions@sheltonstate.edu](mailto:admissions@sheltonstate.edu)

**Websites:** <https://www.sheltonstate.edu/>  
<https://www.sheltonstate.edu/admissions-financial-aid/>

Shelton State offers both instructional and athletic scholarships to qualified students. Learn more about scholarship application deadlines, and determine your eligibility at <https://www.sheltonstate.edu/admissions-financial-aid/financial-aid/scholarships/>

## SOUTHERN UNION STATE COMMUNITY COLLEGE

### **Campuses:**

**Wadley:** 750 Roberts Street, Wadley, AL 36276 (256) 395-2211

**Opelika:** 301 Lake Condry Road, Opelika, AL 36801 (334) 745-6437

**Valley:** 321 Fob James Drive, Valley, AL 36854 (334) 756-4151

**Website:** [www.suscc.edu](http://www.suscc.edu)

Southern Union State Community College offers a number of different scholarships for incoming freshmen and currently enrolled students. Scholarship details are posted on our homepage, [www.SUSCC.edu](http://www.SUSCC.edu), or within the financial aid tab. Scholarship applications will be available late–November.

Students may be able to obtain assistance in the form of scholarships granted on the basis of academic/technical achievement, participation in extracurricular and leadership activities, and exhibited talents of the fine arts.

For more information about available scholarships and applicable deadlines, visit <https://www.suscc.edu/about-suscc/scholarships.cms>

*Disclaimer: Scholarship types and award amounts are subject to change at any time at the discretion of the institution awarding the scholarship. Please confirm the details of the scholarship prior to applying.*

## TRENHOLM STATE COMMUNITY COLLEGE

**Address:** 1225 Air Base Blvd.  
Montgomery, AL 36116  
P.O. Box 10048  
Montgomery, AL 36108

**Phone:** (866) 753-4544 or (334) 420-4200

**Websites:** [www.trenholmstate.edu](http://www.trenholmstate.edu)  
[www.trenholmstate.edu/future-students/financial-aid/](http://www.trenholmstate.edu/future-students/financial-aid/)

Trenholm State Community College (TSCC) offers a limited number of scholarships to students entering as freshmen and to currently enrolled students. Trenholm State Institutional Scholarships are awarded on a competitive basis by a selection committee. In addition, there are a limited number of transfer scholarships available for Trenholm students. The types of scholarships awarded at the College are: Institutional, Transfer, Ambassador, and Counselors.

For information regarding the 2024-2025 scholarship application cycle, watch the following website for details and application requirements: <https://www.trenholmstate.edu/current-students/student-resources/scholarships/>

Any questions regarding Institutional scholarships should be directed to [scholarships@trenholmstate.edu](mailto:scholarships@trenholmstate.edu) or 334-420-4317.

Additional information about Scholarships can be found at: <https://www.trenholmstate.edu/future-students/financial-aid/scholarships/>.

## WALLACE COMMUNITY COLLEGE SELMA

**Contact:** Office of Admissions  
3000 Earl Goodwin Parkway  
Selma, AL 36702

**Phone:** (334) 876-9295

**Email:** [admissions.records@wccs.edu](mailto:admissions.records@wccs.edu)

**Websites:** <https://www.wccs.edu/>  
<https://www.wccs.edu/admissions/student-admissions>

There are a limited number of scholarships available to qualified students. To qualify for these scholarships, students must first be admitted to the

*Disclaimer: Scholarship types and award amounts are subject to change at any time at the discretion of the institution awarding the scholarship. Please confirm the details of the scholarship prior to applying.*



institution, complete a scholarship application, submit a transcript, verification of ACT scores, and two letters of recommendation from non-relatives. Scholarships are awarded to first-time freshmen and recipients of scholarships are notified in writing by the Scholarship Committee Chairperson. The deadline for submission of complete application packets is April 1.

### **Presidential Scholarship**

To qualify for a Presidential Scholarship that covers tuition and fees, a student must have a composite ACT score of at least 24. To renew the scholarship for a maximum of four semesters, the student must be enrolled in a maximum of 12 to 15 hours each semester and maintain a 3.25 GPA.

### **Academic Scholarship**

To qualify for an Academic Scholarship that covers tuition and fees, a student must have a composite ACT score of at least 20. To renew the scholarship for a maximum of four semesters, the student must be enrolled in a maximum of 12 to 15 hours each semester and maintain a 2.75 GPA.

For more information about scholarships, visit <https://www.wccs.edu/financial-aid/scholarships>

For additional questions regarding scholarships, contact Chantae Dosey at [chantae.dosey@wccs.edu](mailto:chantae.dosey@wccs.edu) or (334) 876-9410.

# Other Scholarship Opportunities

## ALABAMA AUTOMOTIVE MANUFACTURERS ASSOCIATION

**Website:** <https://dreamitdoitalabama.com/aama/>

\$4,000 scholarship:

Use your scholarship at any one of the 23 eligible community colleges in the state.

Steps:

- Complete application with resume.
- A maximum 500-word essay telling why you want to work in Alabama's automotive industry.
- One signed reference letter.
- Either an unofficial high school or a college transcript.
- A headshot photo.

Requirements:

- Must be a resident of Alabama.
- High school senior or college freshman.
- Must have a 2.5 overall GPA.
- Plans to pursue an automotive manufacturing related career in Alabama.
- Applicants must have a declared major in one of the approved scholarship related programs:
  - Automotive Manufacturing Technology
  - Automotive Manufacturing
  - Automotive Service Technician
  - Computer Numerical Control
  - Engineering Technology
  - Industrial Electronics Technology
  - Industrial Maintenance Technology
  - Injection Molding
  - Logistics
  - Machine Shop/Tool Technology
  - Manufacturing Technology
  - Mechanical Design Technology
  - Mechatronics
  - Welding Technology

*Disclaimer: Scholarship types and award amounts are subject to change at any time at the discretion of the institution awarding the scholarship. Please confirm the details of the scholarship prior to applying.*

— Other automotive related programs may be considered.

- Applicants must submit required application documentation by stated deadline (includes headshot photo).
- Applicant must be willing to participate with his or her assigned mentor.
- Applicant is required to communicate with AAMA and ACCS to provide pertinent information.



*This* is what scoring  
the right price looks like.

Meet Dave. Dave has Alfa Insurance, and he's celebrating like he won it all. The truth is, when you save this much money on an auto policy, every day feels like game day. He's not stressing from the sidelines. That's someone else's job. He's in the zone, catching every play, cheering like there's no tomorrow. Why? Because Dave's undefeated on the road, that's why.

THAT'S *Life* WITH  
**Alfa Insurance**  
AlfaSatisfaction.com

# ALABAMA FARMERS FEDERATION ASSOCIATION (ALFA)

**Address:** Alabama Farmers Federation  
2108 E. South Blvd.  
Montgomery, AL 36116

**Phone:** (334) 288-3900

**Website:** <https://alfafarmers.org/resources/scholarships/>

*The application period for 2024 begins November 1, 2023, and runs through February 1, 2024.*

## **Alfa Foundation Scholarship**

The Alfa Foundation will award 100 scholarships for \$1,000 each to students attending Alabama colleges, universities and technical schools.

## **Alabama Farmers Agriculture Foundation Scholarship**

The Alabama Farmers Agriculture Foundation will award up to 67 scholarships for \$1,750 each to students majoring in agriculture or forestry at Auburn University and Alabama A&M University.

**See the website above for requirements and to apply.**

## **ALABAMA LAW FOUNDATION, INC.**

**Address:** Alabama Law Foundation, Inc.  
P.O. Box 4129  
Montgomery, AL 36103

**Phone:** (334) 781-6343

**Website:** <https://www.alabamalawfoundation.org/scholarships/kids-chance/>

**The Kids' Chance Scholarship:** Kids' Chance scholarships fund college tuition or technical training to young people whose parent or parents have been permanently and totally disabled or killed on the job. The death or disabling injury of a parent in an on-the-job accident usually means that a family's standard of living is permanently lowered. Without help from Kids' Chance, these young people might not have the opportunity to continue their education. Scholarships are announced once a year, and students may apply every year they attend classes. Scholarships range from \$500 to \$2500. Conceived by the Workers' Compensation Section of the Alabama State Bar in 1992, Kids' Chance is administered by the Alabama Law Foundation. Kids' Chance scholarships are funded solely by contributions from corporations, organizations and individuals.

*Disclaimer: Scholarship types and award amounts are subject to change at any time at the discretion of the institution awarding the scholarship. Please confirm the details of the scholarship prior to applying.*

## AMERICAN LEGION AND AUXILIARY SCHOLARSHIPS

**Address:** The American Legion Department of Alabama  
Education and Scholarship Chairperson  
P.O. Box 606  
Montgomery, AL 36104-1176

**Phone:** (334) 262-1176

**Email:** americanlegionaux1@juno.com

**Websites:** <https://www.legion-aux.org/scholarships>  
<https://www.legion.org/scholarships>

The American Legion offers a number of scholarships and other resources to assist young people in their pursuit of higher education. There are opportunities for everyone, including kin of wartime veterans and participants in Legion programs.

Visit their website links above for application links, requirements and deadlines.

### **Children of Warriors National Presidents' Scholarship**

<https://www.legion-aux.org/Scholarships/Children-of-Warriors>

It is important to acknowledge the sacrifices of our service members who preserve our freedom, but that is not enough. The sacrifices of the children of those who served should also be honored. Providing funds to assist these children so they can pursue higher education is a concrete way of showing how much we, as a nation, care.

The American Legion Auxiliary sponsors the Children of Warriors National Presidents' Scholarship to support the children of our warriors. These scholarships are awarded to 15 students annually who excel in academics and volunteer in their communities.

### **Scholarships Awarded**

Three \$5,000 scholarships are awarded annually per geographic division, for a total of 15 scholarships. These scholarships are for undergraduate study only at a four-year accredited college or university, and may be used for tuition, books, fees, room, and board.

Scholarship Deadline: March 1 of each calendar year

### **Non-Traditional Student Scholarship**

One \$2000 scholarship is awarded annually per Auxiliary geographic division. Applicant must be pursuing training in a certified trade,

*Disclaimer: Scholarship types and award amounts are subject to change at any time at the discretion of the institution awarding the scholarship. Please confirm the details of the scholarship prior to applying.*

professional, or technical program, or a two-year or four-year degree program.

Scholarship Deadline: March 1 of each calendar year

### **Spirit of Youth Scholarship Fund**

The Spirit of Youth Scholarship Fund is an umbrella that supports three separate scholarship opportunities for participants in American Legion Auxiliary programs. One is for American Legion Auxiliary Junior members, another for the Honorary National Junior Division Vice Presidents, and one is for participants in the American Legion Auxiliary Girls Nation program.

Scholarship Deadline: March 1 of each calendar year

### **Junior Member Loyalty Scholarship**

American Legion Auxiliary Junior members are the future of our organization. To reward those who retain their membership into adulthood, the American Legion Auxiliary offers the Junior Member Loyalty Scholarship to current college students. Ten scholarships, in the amount of \$2,500 each, will be awarded to current college students. Two scholarships will be awarded in each division of the American Legion Auxiliary divisions. The scholarship is a grant, not a loan.

Scholarship Deadline: March 1 of each calendar year

## **SAMSUNG AMERICAN LEGION SCHOLARSHIP**

**Website:**      <https://www.legion.org/scholarships/samsung>

Worldwide electronics leader Samsung endowed a scholarship fund of \$5 million to be administered by The American Legion in 1996. Meant to show appreciation for U.S. veterans who came to Korea's aid during its struggle against communist forces in the Korean War, the Samsung American Legion Scholarship Program established a series of scholarships derived from interest and other income from the principal amount. As of 2019 the Samsung American Legion Scholarship has awarded more than \$6.5 million in college scholarships to 2,266 applicants since its inception in 1996.

The application window for the Samsung American Legion Scholarship opens February 1st each year.

### **Deadline**

Scholarship applicants must complete and submit their online application prior to 11:59 (local time) of Day 1 of their respective American Legion Boys State or American Legion Auxiliary Girls State program. All applications

*Disclaimer: Scholarship types and award amounts are subject to change at any time at the discretion of the institution awarding the scholarship. Please confirm the details of the scholarship prior to applying.*

must be submitted using the online application system and may not be modified after the due date or given a deadline extension under any circumstance.

Participants should check their individual program coordinator as to whether or not the coordinator desires them to bring a hard copy of their submitted application materials. If a hard copy is required, participants will need to complete their application PRIOR to arrival at their respective program.

### **Award Amounts**

Samsung scholarships may be used for undergraduate studies and applied toward tuition, books, fees, and room and board. Winners are selected according to academic record, involvement in school and community service.

- Ten National Scholars receive \$10,000 each (two from each region)
- Ten National Runners-Up receive \$5,000 each (two from each region)
- Remaining Department Finalists receive \$1,250 each guaranteed

### **Eligibility**

Scholarship applications are limited to students between their junior and senior years of high school who attend the current session of either an American Legion Boys State or American Legion Auxiliary Girls State program and are a direct descendant - i.e. child, grandchild, great grandchild, etc. - or a legally adopted child of a wartime U.S. military veteran who served on active duty during at least one of the periods of war officially designated as eligibility dates for American Legion membership. Applicants who are direct descendants of Korean War Era Veterans will receive three bonus points.

### **The American Legion Legacy Scholarship**

**Website:** <https://www.legion.org/scholarships/legacy/about>

The American Legion Legacy Scholarship is a needs-based scholarship designed to fulfill a financial gap remaining after all federal and state educational grants/scholarships available to an eligible applicant have been utilized.

Children of U.S. military members who died while on active duty on or after Sept. 11, 2001. Children of post-9/11 veterans having been assigned a combined disability rating of 50 percent or greater by the Department of Veterans Affairs also qualify.

*Disclaimer: Scholarship types and award amounts are subject to change at any time at the discretion of the institution awarding the scholarship. Please confirm the details of the scholarship prior to applying.*

Each needs-based scholarship provides up to \$20,000 for children of the fallen, and up to \$5,000 for children of the disabled for undergraduate or post-graduate college. Recipients may reapply for additional annual awards up to six times.

The application deadline is April 15, annually. Scholarship awards must be used within one year. Winners are announced each May.

### **National High School Oratorical Contest Scholarship**

**Website:** <https://www.legion.org/scholarships/oratorical>

Scholarships are awarded to the three finalists. First place receives \$25,000, second gets \$22,500 and third takes \$20,000.

Each individual state winner certified into and participating in the first round of the national contest receives a \$2,000 scholarship.

Each first-round winner who advances, but does not qualify for the finals, receives an additional \$2,000 scholarship.

Oratorical scholarship recipients will be eligible to receive their scholarships upon enrollment to an accredited trade school, college, or university within the United States. All scholarship claims are a two-party check: to the student AND the school.

Scholarship recipients must utilize the total award within eight years, excluding active military duty or religious mission.

Additionally, the winner of the National Oratorical Contest will travel to join the Youth Champion Delegation of The American Legion that is honored each August at the annual National Convention of The American Legion.

Since this program starts at the local level, scholarships could be awarded to participants by posts, districts, counties and departments during earlier levels of competition.

### **American Legion Eagle Scout of the Year Scholarship**

**Website:** <https://www.legion.org/scholarships/eaglescout>

The American Legion Eagle Scout of the Year nomination window is from

*Disclaimer: Scholarship types and award amounts are subject to change at any time at the discretion of the institution awarding the scholarship. Please confirm the details of the scholarship prior to applying.*



November 1 to March 1, annually. Nomination packets must be received by each applicant's respective American Legion department (state) headquarters no later than March 1. Then each respective American Legion Department (state) Selection Committee will determine the Eagle Scout judged to be the best in their Department (state). The Department (state) will then send that packet, along with a list of the members serving on that Selection Committee, to The American Legion National Headquarters no later than April 1.

The American Legion Eagle Scout of the Year will receive a \$10,000 scholarship. Three runner-up scholarship awards will be granted in the amount of \$2,500 each. The scholarship recipients will be eligible to receive their scholarship immediately upon graduation from high school (public, parochial, military, private, or home school) and must utilize the total award within four years of their post high school graduation date, excluding active military duty or religious mission.

Additionally, the American Legion Eagle Scout of the Year will travel to join the Youth Champion Delegation of The American Legion that is honored each August at the annual National Convention of The American Legion.

Applicants having questions or seeking additional information about their application or the application process should contact their respective American Legion department (state) headquarters. Contact information for American Legion department (state) headquarters may be obtained at [www.legion.org/departments](http://www.legion.org/departments).

### **Junior Shooting Sports Scholarship**

**Website:** <https://www.legion.org/scholarships/shooting>

Annual American Legion 3-Position Junior Air Rifle Championship

Two Categories:

- Precision: Winner will receive \$5,000 in college scholarships
- Sporter: Winner will receive \$5,000 in college scholarships

These scholarships are provided in part by The American Legion and The Sons of the American Legion.

Second place finishers in each category will each receive \$1,000 in college scholarships generously provided by The American Legion Auxiliary.

Junior Shooting Sports scholarship recipients will be eligible to receive their scholarships upon enrollment to an accredited trade school, college, or university in the United States. All scholarship claims are a two-party check: to the student AND to the school.

*Disclaimer: Scholarship types and award amounts are subject to change at any time at the discretion of the institution awarding the scholarship. Please confirm the details of the scholarship prior to applying.*

Scholarship recipients must utilize the total award within eight years, excluding active military duty or religious mission.

The winners in both Precision and Sporter category will receive an expense paid trip to The American Legion National Convention where they will be honored as part of the Youth Champions Delegation.

## AMERICAN RED CROSS

**Website:** <https://www.redcrossblood.org/hosting-a-blood-drive/learn-about-hosting/why-host-a-blood-drive/leaders-save-lives.html>

### **Leaders Save Lives Scholarship Program**

Sign up to host a blood drive while school is out of session and join the impressive group of youth across the nation who are helping save lives with the American Red Cross. You could earn leadership skills, volunteer hours, a gift card and be entered to win a scholarship. The scholarship drawing and gift card amount will be based on the number of pints collected at your blood drive.

- Sign up to host a blood drive while school is out of session. Winter 2023-24: Dec. 15, 2023 - Jan. 15, 2024
- Form a recruitment committee to help make your blood drive a success.
- Recruit your friends, family and the community to donate at your blood drive.
- Collect 25 pints or more at your blood drive and you will earn a gift card and be entered to win a scholarship.

## CAPITAL CITY KIWANIS FOUNDATION

**Address:** Capital City Kiwanis Foundation – Scholarship Chair  
United Ways of Alabama  
8 Commerce Street  
Montgomery, AL 36104

**Website:** [www.cckiwanis.org](http://www.cckiwanis.org) or <https://www.cckiwanis.org/Page/13295>

**Email:** [cckcscholarships@gmail.com](mailto:cckcscholarships@gmail.com)

To be considered, please submit:

- Application (found on the above website)
- One page essay/letter telling of your tentative educational and career plans and goals, how you will attain them and other pertinent or interesting information which may aid the judges in selection.
- Resume or list of academic and leadership awards and/or honors

*Disclaimer: Scholarship types and award amounts are subject to change at any time at the discretion of the institution awarding the scholarship. Please confirm the details of the scholarship prior to applying.*

received since ninth grade year. List any leadership positions, community and school service work for your junior and senior years. Indicate time frames involved with all awards, honors, leadership and service. Give only sufficient detail to put this information in appropriate perspective. Consideration will be given to all awards, honors, leadership and service, but weighted toward those accomplished in the junior and senior years.

**The Charles M. Read Scholarship** may be awarded to a member of the senior class from one of the Montgomery County Public, Independent or Private High Schools. The minimum amount of this cash grant, which is presented in May of each year, is \$2,000. Two criteria govern selection: high academic achievement and demonstrated leadership and service in school, church and/or community.

**The Junius Smith/Phillip Poundstone Needs based Scholarship** may be awarded to a member of the senior class from one of the seven Montgomery County Public High Schools. The minimum amount of this cash grant, which is presented in May of each year, is \$2,000. Two criteria govern selection: high academic achievement and demonstrated leadership and service in school, church and/or community.

**The Henry McNeill Memorial Scholarship** may be awarded to a high school senior from a Montgomery Public, independent, or private high school. The minimum amount of this cash grant, which is presented in May of each year, is \$1,000. Two criteria govern selection: high academic achievement and demonstrated leadership and service in school, church and/or community. This scholarship particularly seeks a student who has shown a strong work ethic as demonstrated by outside employment or significant volunteer activity.

Applicants will be judged solely on evidence of academic and leadership achievement without regard to race, creed or sex. Every applicant will be acknowledged; finalists may be asked to appear for a personal interview with the selection committee. For more information, please email [cckcscholarship@gmail.com](mailto:cckcscholarship@gmail.com).

## CENTRAL ALABAMA COMMUNITY FOUNDATION

**Contact:** Jackie Johnson, Vice President – Customer Service

**Email:** Jackie.johnson@cacinfo.org

**Phone:** (334) 264-6223

**Website:** <https://cacinfo.org/scholarships/>

Through its scholarship funds, the Central Alabama Community Foundation assists area students to attain their academic goals by offsetting their postsecondary educational expenses. Apply for scholarship funds beginning December 1 with a deadline of March 1, with the exception of The Wayne Hawkins Memorial Scholarship which has a deadline of March 15.

Qualifying criteria varies broadly by program with the bulk of scholarship funds targeting graduating seniors. In an effort to make the process as efficient as possible, one application form can be completed to apply for multiple programs.

At the website, <https://cacinfo.org/scholarships/> select the foundation closest to you to see scholarships offered in your area.

- Central Alabama serves Butler, Cullman, Lowndes, Macon, Montgomery, and Pike Counties; and includes statewide scholarships;
- Autauga Area serves Autauga County;
- Elmore County serves Elmore County;
- Southeast Alabama serves Coffee, Dale, Geneva, and Houston Counties.

## COCA-COLA SCHOLARSHIPS

### **The Coca-Cola Scholars Program Scholarship**

**Website:** <https://www.coca-colascholarsfoundation.org/apply/>

*The 2024 application is now open for students who will graduate during the 2023-2024 academic year. The deadline to apply is Monday, October 2, 2023, by 5pm Eastern.*

The Coca-Cola Scholars Program scholarship is an achievement-based scholarship awarded to students in their final year of high school. Students are recognized for their capacity to lead and serve, as well as their commitment to making a significant impact on their schools and

*Disclaimer: Scholarship types and award amounts are subject to change at any time at the discretion of the institution awarding the scholarship. Please confirm the details of the scholarship prior to applying.*

communities. With the 35th class in 2023, the Foundation has provided over 6,750 Coca-Cola Scholars with more than \$81 million in educational support. 150 Coca-Cola Scholars are selected each year to receive this \$20,000 scholarship.

### **The Coca-Cola Community College Academic Team**

The Coca-Cola Scholars Foundation proudly supports two-year colleges through the Coca-Cola Community College Academic Team Program, administered by Phi Theta Kappa.

Get application details at [www.ptk.org](http://www.ptk.org).

### **Coca-Cola Leaders of Promise**

Coca-Cola Leaders of Promise is Phi Theta Kappa's first scholarship program available to its members to be used during the time they are enrolled in community colleges. 200 scholarships of \$1,000 each will be awarded based on applications submitted by members.

Get application details at [www.ptk.org](http://www.ptk.org).

## **COLLEGECOUNTS SCHOLARSHIP**

**Address:** Office of Alabama State Treasurer  
600 Dexter Avenue, Room S-106  
Montgomery, AL 36104

**Phone:** (800) 309-1198 for assistance with an application

**Email:** [collegecounts@applyists.com](mailto:collegecounts@applyists.com)

**Website:** <http://treasury.alabama.gov/collegecounts-scholarship/>

College can be the best time of your life. But paying for college isn't easy. In fact, the cost of college can make some students afraid to even try. The CollegeCounts Scholarship provides funding assistance to Alabama high school students who demonstrate a financial need and are planning to attend an Alabama college.

### **Eligibility**

- Applicants must meet all of the following criteria to be eligible for this scholarship:
- Be a high school senior or first-time college freshman beginning in fall 2023
- Be a U.S. citizen
- Be an Alabama resident
- Planning to enroll in an Alabama eligible educational institution in fall 2023

*Disclaimer: Scholarship types and award amounts are subject to change at any time at the discretion of the institution awarding the scholarship. Please confirm the details of the scholarship prior to applying.*

- Demonstrate financial need
- Have a minimum GPA of 2.75
- Have an ACT score of 26 or below (applicants attending a two-year school will not be required to submit ACT scores)

#### Award Details

- Awards of \$4,000 for four-year college enrollees and \$2,000 for two-year college enrollees.
- Award is one-time, non-renewable and granted on a semester basis in the first academic year.

## **DISTINGUISHED YOUNG WOMEN OF ALABAMA**

**Website:**      <https://distinguishedyw.org/scholarships>

Distinguished Young Women is the oldest and largest scholarship program for high school girls. Last year, more than \$1 billion in cash tuition and college-granted scholarships were available nationally.

Scholarships are available in two ways: cash tuition scholarships (which can be used at any accredited institution of higher learning) and college-granted scholarships (over 100 colleges and universities offer scholarships to program participants – several scholarships are available just for taking part in a local or state program!)

### **Cash Scholarships**

Last year, participants received more than \$2.1 million in cash scholarships through our programs across the nation. This money can be used for tuition, room and board, books, or other educational expenses (like lab fees or a computer). Interested in competing for college scholarships? APPLY today! Remember, it costs nothing to enter!

### **College-Granted Scholarships**

Distinguished Young Women also works with over 100 colleges and universities across the country to provide opportunities for our participants to further their education. Some scholarships are available to any participant that takes part in a local or state program.

### **HUNTINGDON COLLEGE - Montgomery, AL**

Four-year, full-tuition renewable scholarships to: Any State Winner (limited to 5 awards per year)

*Disclaimer: Scholarship types and award amounts are subject to change at any time at the discretion of the institution awarding the scholarship. Please confirm the details of the scholarship prior to applying.*



- **Canva & Etsy Files**
- **Graduation Invites**
- **Holiday Cards**
- **Announcements**
- **Personalized Gifts**
- **Graduation Banners**
- **Graduation Yard Signs**
- **Custom Stoles**

Order online at: **LetDeltaDolt.com**

-Scholarship is not stackable

Contact: Leanne Mallory Carroll, Vice President for Enrollment Management, at 334-833-4453.

### **TROY UNIVERSITY - Troy, AL**

– \$10,000 Chancellor’s scholarship and \$1,250 Study Abroad Scholarship  
to: Any State Winner

– \$3,500 DYW Scholarships (to include a \$1,250 Study Abroad Scholarship)  
to: Any Alabama local program winner with a 3.0 GPA and 23 ACT

– Four-year, renewable Trojan Opportunity Expanded Scholarship, valued at the out-of-state portion of tuition costs for four years with maintenance of 2.7 GPA to: Any State Winner with a 3.0 GPA and 22 ACT

Contact: Korrie Lynn Williamson, Senior Director of Enrollment Services at 334-808-6707.

*Disclaimer: Scholarship types and award amounts are subject to change at any time at the discretion of the institution awarding the scholarship. Please confirm the details of the scholarship prior to applying.*

## **UNIVERSITY OF ALABAMA - Tuscaloosa, AL**

– Four-year, Presidential scholarship, \$5,000 freshman year housing scholarship, and \$5,000 study abroad stipend to: Distinguished Young Woman of America

– Four-year, Presidential scholarship to: Any State Winner

– Four-year, Presidential scholarship plus a \$5,000 freshman year housing scholarship to: Distinguished Young Woman of Alabama and Alabama's Overall Scholastics Winner

If a student receives an Automatic Merit Scholarship or an UA Competitive Admissions Scholarship that is less than the In-State or Out-of-State Presidential, this designation will bump them to the respective presidential-equivalent award. A student cannot receive both a merit based award and program-based award. Should a student already be receiving a Presidential Scholarship, they will receive a \$2,000 per year stipend, \$300 per year book scholarship, and one-time \$3,000 study abroad stipend. If the National Representative has already received a Presidential Scholarship, she will only receive the housing scholarship and study abroad stipend.

Contact: Simone Willis, Assistant Director of Undergraduate Scholarships, at [Simone.willis@ua.edu](mailto:Simone.willis@ua.edu) or 205-348-8201

## **UNIVERSITY OF ALABAMA AT BIRMINGHAM - Birmingham, AL**

– One-time, stackable scholarship of \$1,000 to: Any State Winner

– One-time, stackable scholarship of \$750 to: Any Local Alabama Winner and Up to 2 participants who are nominated by the Distinguished Young Woman of Jefferson County (AL) Program

See Distinguished Young Women website for more details.

## **UNIVERSITY OF MOBILE - Mobile, AL**

– Four-year, renewable full-tuition and fees scholarship with maintenance of a 3.0 GPA to: Distinguished Young Woman of America

– Four-year, renewable half-tuition scholarship with maintenance of a 3.0 GPA to: Any Distinguished Young Woman participant with a minimum 27 ACT and 3.0 high school GPA

\*The priority deadline for application submission is May 1st. A student cannot receive both a merit-based award and DYW program-based tuition award. To be considered for these awards, you must enroll full time to the

*Disclaimer: Scholarship types and award amounts are subject to change at any time at the discretion of the institution awarding the scholarship. Please confirm the details of the scholarship prior to applying.*



University for the fall semester immediately following your high school graduation and be a residential student.

Contact: Charity Wittner, Vice President for Enrollment Services at [cwittner@umobile.edu](mailto:cwittner@umobile.edu).

### **UNIVERSITY OF SOUTH ALABAMA - Mobile, AL**

– Four-year, renewable full-tuition and fees scholarship with maintenance of a 3.0 GPA to: Distinguished Young Woman of America, Distinguished Young Women of Alabama, National Overall Scholastics Winner, and any State winner with 30 ACT or 1360 SAT and 3.0 GPA

Contact: Brennen Mallet, Assistant Director for Enrollment Services, at 251-460-6494

### **UNIVERSITY OF WEST ALABAMA - Livingston, AL**

– Four-year, renewable \$2,500 four-year, renewable Trustee Leadership scholarship with maintenance of a 3.0 college GPA to: Any local or state participant with a 19 ACT and 2.0 high school GPA

\*Additionally, Trustee Academic Scholarships at UWA start at a 27 composite ACT and 3.0 high school GPA and can be stacked with the DYW award.

Contact: Libba Baker, Interim Director of Admissions, at 205-652-3578

## **MONTGOMERY AREA CHAPTER MILITARY OFFICERS ASSOCIATION OF AMERICA**

**Website:** [www.macmoaa.org](http://www.macmoaa.org)

**Contact:** MAMO Scholarship Foundation  
3066 Zelda Road, PMB # 392  
Montgomery, AL 36106

**Email:** [macmoaa@macmoaa.org](mailto:macmoaa@macmoaa.org)

For more information, visit [www.macmoaa.org/home/scholarship](http://www.macmoaa.org/home/scholarship)

## NATIONAL YOUNG ARTS FOUNDATION

**Address:** National Young Arts Foundation  
2100 Biscayne Blvd.  
Miami, FL 33137  
**Phone:** (800) 970-2787  
**Website:** <https://youngarts.org/apply/>

The 2024 YoungArts application closes on October 13, 2023 at 11:59 PM ET.

## NATIONAL SOCIETY OF BLACK ENGINEERS MAE SCHOLARSHIP

**Address:** NSBE-MAE Scholarship Program  
Earnest Colvin  
P.O. Box 210176  
Montgomery, AL 36121  
**Phone:** (334) 626-8589  
**Website:** <https://nsbe-mp.org/>

Each year, the Montgomery Professionals Chapter of the National Society of Black Engineers (NSBE-MP) gives out scholarships to students in the River Region that are pursuing or plan on pursuing a degree in a STEM or engineering related field.

Students must be a resident of Autauga, Elmore, or Montgomery counties in Alabama and meet other stated requirements in order to qualify for this award.

For more details, visit <https://www.nsbe-mp.org/scholarship/>

## NATIONAL SOCIETY DAUGHTERS OF THE AMERICAN REVOLUTION

**Website:** <https://www.dar.org/national-society/scholarships>

Each year the National Society Daughters of the American Revolution (DAR) awards multiple scholarships to students showing dedication to the pursuit of higher education in diverse areas of study including history,

*Disclaimer: Scholarship types and award amounts are subject to change at any time at the discretion of the institution awarding the scholarship. Please confirm the details of the scholarship prior to applying.*

economics, law, political science, medicine, nursing, occupational and physical therapy, elementary and secondary education, chemistry, math, science and English.

DAR's scholarships are awarded and judged without regard to gender, race, color, religion, national origin, or disability.

- Applicants must be citizens of the United States.
- Applicants must attend or plan to attend an accredited college or university in the United States.
- All multi-year scholarships, typically renewable up to four years, must be for consecutive years of attendance.
- Awards are based on academic excellence, commitment to the field of study, and/or financial need, or other restrictions on specific scholarships.
- Awards are placed on deposit with the recipient's college or university and any unused portion shall be returned to the DAR.
- Applicants are only eligible to receive one scholarship from the DAR.

The portal will reopen for the coming year, 2024, on November 1, 2023 through January 31, 2024 at 11:59pm (Hawaii Time)

For more information, contact [scholarships@nsdar.org](mailto:scholarships@nsdar.org)

## **BENNIE SIMINGTON, SR. SCHOLARSHIP**

**Scholarship website:** <https://efmmontgomery.org/>

- Open to graduating high school seniors in the River Region
- Application requirements: official transcript, essay, 2.75 GPA or higher, ACT score of 23 or SAT of 830, two letters of recommendation, community involvement and leadership skills
- Deadline: April 1

Established December 2020 by Eternal Fountain Ministries to provide three \$1,000 scholarships annually. January 2021, the scholarship was named in honor of a man who exemplifies the definition of godliness, dignity, integrity and humility. Applications will be available on the above website January 1.

*Disclaimer: Scholarship types and award amounts are subject to change at any time at the discretion of the institution awarding the scholarship. Please confirm the details of the scholarship prior to applying.*

## AUTAUGA COUNTY

**Scholarship website:** <https://cacinfo.org>

### **Paul Easterling Dixie Youth Scholarship**

<https://cacinfo.org/scholarships/paul-easterling-dixie-youth-scholarship/>

*Open to graduating seniors from any school in Autauga County*

Established in memory of Paul Easterling, this scholarship benefits graduating seniors of any school located in Autauga County who have ever participated in Dixie Youth Baseball. The award recognizes students who good sportsmanship on and off the sports field.

Application Requirements: High School Transcript, Essay and References  
Deadline: March 1

## ELMORE COUNTY

### **Barrett Family Scholarship**

<https://cacinfo.org/scholarships/barrett-family-scholarship/>

*Open to graduating seniors from any high school in Elmore County who are planning to attend Auburn University*

The Barrett Family Scholarship, established in memory of Terry, Ben and Janet Barrett, benefits graduates of any Elmore County high school who plan to attend Auburn University. Preference will be given to graduates of Wetumpka High School, although graduates of other Elmore County high schools will be considered. Awards will be based on academic achievement, financial need and (3) community service. Applicant could be interviewed by the selection committee.

Application Requirements: High School Transcript

Deadline: March 1

### **Ben Grubbs Scholarship**

<https://cacinfo.org/scholarships/ben-grubbs-scholarship/>

*Open to graduating seniors of Elmore County High School*

The Ben Grubbs Scholarship was established to benefit graduates of Elmore County High School and will be used to fund two \$5,000 scholarship awards annually. Applicants must have a minimum 2.5 GPA,

*Disclaimer: Scholarship types and award amounts are subject to change at any time at the discretion of the institution awarding the scholarship. Please confirm the details of the scholarship prior to applying.*

and have participated must have participated in an AHSAA sponsored sport at ECHS. Preference is given to students with involvement in church and community service and to students demonstrating financial need.

Application Requirements: High School Transcript, Essay and References

Deadline: March 1

### **Coach Grady Rowe Scholarship**

<https://cacfinfo.org/scholarships/coach-grady-rowe-scholarship/>

*Open to graduating seniors from Elmore County High School*

Established in memory of the beloved ECHS teacher and football coach, Coach Grady Rowe, this \$1,000 scholarship will be awarded to a deserving girl and boy senior from Elmore County High School. Applicants must have a 3.0 GPA on a 4.0 scale and have participated in an AHSAA sponsored sport at ECHS. Selection criteria include proven leadership or motivation to excel in school or extracurricular activities, participation in church and community, and financial need.

Application Requirements: High School Transcript, Essay and References

Deadline: March 1

### **Coach Jack Ray Scholarship:**

<https://cacfinfo.org/scholarships/coach-jack-ray-scholarship/>

*Open to members of the football team who are graduating seniors from Wetumpka High School*

Established to honor Willard Jackson Ray, former head football coach of Wetumpka High School from 1952 to 1964. The scholarship will be awarded to a football player that demonstrates teamwork and true team spirit and has made a major contribution toward his team. Preference will be given to a player who does not receive a full athletic scholarship. Financial need may also be considered. Scholarship awarded to any two or four year institution, technical, trade or vocational school.

### **Deputy James Bart Hart Rotarian Memorial Scholarship**

<https://cacfinfo.org/scholarships/deputy-james-bart-hart-rotarian-memorial-scholarship/>

*Open to graduating seniors from Elmore County High School*

Established in loving memory of Deputy James Bart Hart who lost his life

Disclaimer: Scholarship types and award amounts are subject to change at any time at the discretion of the institution awarding the scholarship. Please confirm the details of the scholarship prior to applying.

in a tragic car accident while on duty, a \$1,500 scholarship will be awarded to a high school senior from Elmore County High School. Applicants must have a minimum 3.0 GPA on a 4.0 scale and be the child of a first responder (police officer, paramedic, firefighter, etc.). The scholarship is need-based.

Application Requirements: High School Transcript, Essay and References  
Deadline: March 1

**Dylon Bieber Scholarship**

<https://cacfinfo.org/scholarships/dylan-bieber-scholarship/>

*Open to graduating seniors from Wetumpka High School*

Established in memory of Wetumpka High School student Dylan Bieber, a \$1,000 scholarship will be awarded to a graduating senior at Wetumpka High School. Applicant must have a minimum 3.0 GPA on a 4.0 scale.

Application Requirements: High School Transcript, Essay and References  
Deadline: March 1

**Elmore County Healthcare Authority Scholarship**

<https://cacfinfo.org/scholarships/elmore-county-healthcare-authority-scholarship/>

*Open to graduating seniors from any Elmore County high school*

One \$500 scholarship will be awarded to a student entering the medical field of nursing or pursuing certification as an emergency medical technician. Award is based on academic accomplishment and financial need. Students who receive a scholarship their freshman year of college may annually reapply for up to three additional years. The applicant could be interviewed by the selection committee.

Application Requirements: High School Transcript, Essay and References  
Deadline: March 1

**Fitzpatrick Homemakers Club Scholarship**

<https://cacfinfo.org/scholarships/fitzpatrick-homemakers-club-scholarship/>

*Open to graduating seniors from any Elmore County high school*

Students must have a minimum 3.0 GPA on a 4.0 scale and be graduating seniors from a school located in Elmore County. Eligible students must plan to begin college in the fall of the year the scholarship is awarded.

*Disclaimer: Scholarship types and award amounts are subject to change at any time at the discretion of the institution awarding the scholarship. Please confirm the details of the scholarship prior to applying.*

Selection criteria include academic achievement and community service.

Application Requirements: High School Transcript and References

Deadline: March 1

### **Fuller Family Scholarship**

<https://cacinfo.org/scholarships/fuller-family-scholarship/>

*Open to graduating seniors from Elmore County High School*

This scholarship was established in 1999 to benefit students graduating from ECHS. Awards will be based on academic ability and financial need with a minimum ACT score of 20. Finalists may be interviewed.

Application Requirements: High School Transcript and Essay.

Deadline: March 1

### **George Truman Welch Scholarship**

<https://cacinfo.org/scholarships/george-truman-welch-scholarship/>

*Open to graduating seniors from Elmore County High School and from Wetumpka High School who are band members*

This scholarship was established in memory of George Truman Welch, Sr., who was the founding director of the legendary Elmore County Band and the former Mayor of Wetumpka. Mr. Welch directed the award winning Elmore County Band, which combined students from Eclectic and Wetumpka, for 26 years. This scholarship will award one \$1,000 scholarship to a graduating senior in the Elmore County High School Band and one \$1,000 scholarship to a graduating senior in the Wetumpka High School Band. Scholarships are awarded based on character, academics, band spirit and attitude.

Application Requirements: High School Transcript and References.

Deadline: March 1

### **Grace K. Bishop Fine Arts Scholarship**

<https://cacinfo.org/scholarships/grace-k-bishop-fine-arts-scholarship/>

*Open to graduating seniors from any Elmore County high school*

A scholarship in the amount of \$500 will be awarded to a high school senior attending any Elmore County high school. Students who have a minimum 3.0 GPA on a 4.0 scale; have participated in drama, art or chorus; and pursue a major or minor in fine arts at an accredited two-

*Disclaimer: Scholarship types and award amounts are subject to change at any time at the discretion of the institution awarding the scholarship. Please confirm the details of the scholarship prior to applying.*

or four-year college or university. Applicant could be interviewed by the selection committee.

Application Requirements: High School Transcript and Essay

Deadline: March 1

### **Herbert M. Christian Scholarship**

<https://cacinfo.org/scholarships/herbert-m-christian-scholarship-2/>

*Open to graduating seniors from any Elmore County high school*

Established in 1997, this fund benefits graduates of any Elmore County high school. Scholarships of up to \$3,000 will be annually awarded based on academic accomplishment and financial need. Special consideration will be given to those applicants having a physical handicap.

Application Requirements: High School Transcript and Essay

Deadline: March 1

### **Hoyt Hardin Scholarship**

<https://cacinfo.org/scholarships/hoyt-hardin-scholarship/>

*Open to graduating seniors from Wetumpka High School*

Established in memory of Wetumpka High School student Hoyt Hardin, a scholarship in the amount of \$1,000 will be awarded to a graduating senior at Wetumpka High School. Applicant must have a minimum 3.0 GPA on a 4.0 scale.

Application Requirements: high school transcript, essay and references

Deadline: March 1

### **Jason Michael Hilty Memorial Scholarship**

<https://cacinfo.org/scholarships/jason-michael-hilty-memorial-scholarship/>

*Open to graduating seniors from Wetumpka High School*

The scholarship benefits graduating seniors of Wetumpka High School with two annual awards of \$2,500. Awards will be based on academic accomplishment and financial need. Applicants should have a minimum GPA of 2.5 on a scale of 4.0 and a minimum ACT score of 21.

Application Requirements: High School Transcript and Essay

Deadline: March 1

*Disclaimer: Scholarship types and award amounts are subject to change at any time at the discretion of the institution awarding the scholarship. Please confirm the details of the scholarship prior to applying.*



### **Jody Marie Sanford Memorial Scholarship**

<https://cacinfo.org/scholarships/jody-marie-sanford-memorial-scholarship/>

*Open to graduating seniors from any Elmore County high school*

This scholarship was established in memory of Jody Marie Sanford and provides \$1,000 awards to one boy and one girl from Wetumpka High School and one boy and one girl from any school in Elmore County and two additional students attending school in Elmore County. Eligible applicants will have a minimum 2.0 GPA on a 4.0 scale, have participated on a school-sponsored sports team (including cheerleading and band) and plan to attend an accredited two- or four-year college or university. The scholarship is need based, and the applicant could be interviewed by the selection committee.

Application Requirements: High School Transcript and Essay

Deadline: March 1

### **John Martin Thornton Memorial Scholarship**

<https://cacinfo.org/scholarships/john-martin-thornton-memorial-scholarship/>

*Open to graduating seniors from Wetumpka High School*

The scholarship benefits graduating seniors of Wetumpka High School who plan to attend an accredited two-year or four-year college or university. Awards are based 75% on academic accomplishment and 25% on financial need. Students who receive a scholarship their freshman year of college may annually reapply for funding for up to three additional years. Applicant could be interviewed by the selection committee.

Application Requirements: High School Transcript, Essay and References

Deadline: March 1

### **Holtville High School Alumni Association Scholarship**

<https://cacinfo.org/scholarships/holtville-high-school-alumni-association-scholarship/>

*Open to graduating seniors from Holtville High School*

This scholarship is available to Holtville High School seniors who will attend an accredited college or university in the State of Alabama. Award based on academic achievement and involvement in school, and community activities.

*Disclaimer: Scholarship types and award amounts are subject to change at any time at the discretion of the institution awarding the scholarship. Please confirm the details of the scholarship prior to applying.*

Application Requirements: High School Transcript and Essay

Deadline: March 1

### **Millbrook Men's Club Conrad Henderson Memorial Scholarship**

<https://cacinfo.org/scholarships/millbrook-mens-club-conrad-henderson-memorial-scholarship/>

*Open to graduating seniors from Stanhope Elmore High School*

Established by the Millbrook Men's Club in memory of Coach Henderson, the \$1,000 scholarship benefits graduating seniors from Stanhope Elmore High School. Eligible applicants will have participated in varsity athletics at SEHS for more than one year. Applicants must have a GPA of a minimum 3.25 GPA on a 4.0 scale. Award is based on academic performance, community service, school sports activities demonstrating school spirit and leadership, and financial aid.

Application Requirements: High School Transcript and References

### **Millbrook Men's Club Scholarship**

<https://cacinfo.org/scholarships/millbrook-mens-club-scholarship/>

*Open to graduating seniors from Stanhope Elmore High School*

This scholarship is available to SEHS seniors who have attended SEHS for more than one year.

Applicants must have a GPA of 3.5 on a 4.0 scale. Award will be based on academic performance, school/community activities that demonstrate leadership, and financial need.

Application Requirements: High School Transcript and References

Deadline: March 1

### **O.M. Bratton Scholarship**

<https://cacinfo.org/scholarships/o-m-bratton-scholarship/>

*Open to graduating seniors from Wetumpka High School*

Established by the Wetumpka High School Class of 1961 to honor the late O.M. Bratton (former WHS principal), this award will be based on leadership and character demonstrated by the support of fellow students, school activities, financial need and faculty recommendations. Recipient will exhibit pride, respect and an open support of WHS. Awards will be made annually for attendance to any two- or four-year institution of higher learning or any technical, trade or vocational school.

*Disclaimer: Scholarship types and award amounts are subject to change at any time at the discretion of the institution awarding the scholarship. Please confirm the details of the scholarship prior to applying.*

Application Requirements: High School Transcript and Essay  
Deadline: March 1

### **Officer David Lee Colley Memorial Scholarship**

<https://cacinfo.org/scholarships/officer-david-lee-colley-memorial-scholarship/>

*Open to graduating seniors from Elmore County High School*

This scholarship was established by his family in memory of Officer David Lee Colley to benefit graduating seniors from Elmore County High School. Eligible applicants must be law-abiding citizens, provide a transcript reflecting a minimum 3.0 GPA on a 4.0 scale, plan to major in criminal justice, prove involvement in church and community service and have participated in an AHSAA sponsored sport at ECHS. Membership in the Beta Club is preferred, but not required.

Application Requirements: High School Transcript, Essay and References  
Deadline: March 1

### **Olive Speer Harper Scholarship**

<https://cacinfo.org/scholarships/oliver-speer-harper-scholarship/>

*Open to graduating seniors from Wetumpka High School*

The scholarship benefits graduating seniors of Wetumpka High School. Selection criteria include academic performance and ability and financial need. Students who receive a scholarship their freshman year of college may annually reapply for up to three additional years.

Application Requirements: High School Transcript  
Deadline: March 1

### **Peyton Elizabeth Cox Memorial Scholarship**

<https://cacinfo.org/scholarships/peyton-elizabeth-cox-memorial-scholarship/>

*Open to graduating seniors from any Elmore County high school who are members of their varsity softball team*

This scholarship was established in memory of Peyton Cox, an athletic, adventurous and outgoing Wetumpka Middle School student, to benefit graduating seniors of any Elmore County Board of Education school. Eligible applicants will be a member of the varsity softball team, have a minimum 3.0 GPA on a 4.0 scale, and plan to attend an accredited two- or four-year college or university, or technical, trade or vocational school.

*Disclaimer: Scholarship types and award amounts are subject to change at any time at the discretion of the institution awarding the scholarship. Please confirm the details of the scholarship prior to applying.*

The number of scholarships and amount given will be determined each year.

Application Requirements: High School Transcript, Essay and References  
Deadline: March 1

### **Ralph Doyle (Randy) Fulmer, II Memorial Scholarship**

<https://cacinfo.org/scholarships/ralph-doyle-randy-fulmer-ii-memorial-scholarship-fund/>

*Open to graduating seniors from Elmore County High School*

Established 2012 in loving memory of Randy Fulmer, this scholarship is available to ECHS graduates who have attended ECHS for at least three years. and have a minimum 2.5 GPA on a 4.0 scale. Awards will be based on academic accomplishment, school/community involvement and financial need.

Application Requirements: High School Transcript and Essay  
Deadline: March 1

### **Ramona P. Jordan Memorial Scholarship**

<https://cacinfo.org/scholarships/ramona-p-jordan-memorial-scholarship/>

*Open to graduating seniors from Elmore County High School*

This scholarship was established in 1996 in memory of Mrs. Jordan, a teacher at ECHS. Awards are based on academic ability and need. Applicants should have a minimum GPA of 3.5 on a 4.0 scale and a minimum ACT score of 21. Applicant could be interviewed by the selection committee.

Application Requirements: High School Transcript and Essay  
Deadline: March 1

### **Tommy C. Turner Memorial Scholarship**

<https://cacinfo.org/scholarships/tommy-c-turner-memorial-scholarship/>

*Open to graduating seniors from any Elmore County high school who is planning to attend the University of Alabama, the University of Alabama in Huntsville or the University of Alabama at Birmingham*

This fund was established to benefit graduates of any Elmore County high school who attend a school that is part of The University of Alabama

*Disclaimer: Scholarship types and award amounts are subject to change at any time at the discretion of the institution awarding the scholarship. Please confirm the details of the scholarship prior to applying.*

system (e.g., The University of Alabama in Tuscaloosa, The University of Alabama in Huntsville or The University of Alabama at Birmingham). Scholarships may be renewed annually. The criteria considered are the applicant's need, academic performance and ability.

Application Requirements: High School Transcript, Essay, References, Copy of IRS 1040A or 1040EZ and Interview

Deadline: March 1

## LOWNDES COUNTY

Available to seniors graduating from any Lowndes County High School:

### **Jackson Family Phoenix Fund Scholarship**

<https://cacinfo.org/scholarships/jackson-family-phoenix-fund-scholarship/>

*Open to graduating seniors from any public Montgomery County high school or from any public Lowndes County high school*

Established for the benefit of graduates of any Montgomery County or Lowndes County public high school, this scholarship was designed to encourage students to pursue degrees in math or the physical, biological or agricultural sciences. Student must attend a Historically Black College or University (HBCU) and major in a non-healthcare science (biology, chemistry, physics, agronomy, horticulture, animal sciences, etc.). Applicant must have a minimum 3.0 GPA on a 4.0 scale, a minimum ACT score of 20 or a minimum SAT score of 1030. Criteria include academic performance, community activities and financial need. Applicants could be interviewed by the selection committee.

Application Requirements: High School Transcript and Essay

Deadline: March 1

## MONTGOMERY COUNTY

### **Earl P. Andrews, Jr. Memorial Scholarship**

<https://cacinfo.org/scholarships/earl-p-andrews-jr-memorial-scholarship/>

*Open to graduating seniors from any Montgomery County high school*

Founded in 1989 by Mrs. Olive Andrews in memory of her son, this

Disclaimer: Scholarship types and award amounts are subject to change at any time at the discretion of the institution awarding the scholarship. Please confirm the details of the scholarship prior to applying.

scholarship is awarded annually to an African American/Black student who is a member of a racial/ethnic minority group. The award is based on academic achievement and need. Eligible applicants must have a minimum ACT score of 23 or SAT score of 1130 and a minimum 3.5 GPA on a 4.0 scale. Value of scholarship ranges from \$1,500 – \$3,000.

Application Requirements: High School Transcript, Essay and Referral

Deadline: March 1

### **Drake Cameron Scholarship Fund**

<https://cacinfo.org/scholarships/dorothy-d-cameron-scholarship/>

*Open to graduating seniors from any Montgomery County high school*

This scholarship benefits graduating seniors from any school located in Montgomery County. Students must indicate by their academic performance the ability and motivation to graduate from college. Awards are based on academic achievement and need. Consideration is also given to students' leadership and participation in extracurricular activities. Two scholarships of \$5,000 will be awarded annually.

Application Requirements: High School Transcript, Essay and References

Deadline: March 1

### **Jack L. Carr Scholarship**

<https://cacinfo.org/scholarships/jack-l-carr-scholarship/>

*Open to graduating seniors from any Montgomery County high school*

Established by the Kiwanis Club of Montgomery for the benefit of high school graduates pursuing a degree in engineering, the scholarship provides one \$1,500 award annually based on academic performance and need. Students who receive the scholarship their freshman year of college may annually reapply for up to for three additional years.

Application Requirements: High School Transcript, Essay and References

Deadline: March 1

### **Dexter C. Hobbs Memorial Scholarship**

<https://cacinfo.org/scholarships/dexter-c-hobbs-memorial-scholarship/>

*Open to graduating seniors from any Montgomery County high school*

Established to benefit high school graduates who emulate the outstanding

*Disclaimer: Scholarship types and award amounts are subject to change at any time at the discretion of the institution awarding the scholarship. Please confirm the details of the scholarship prior to applying.*

moral qualities and commitment of the late Dexter C. Hobbs, open to seniors from any Montgomery high school, with preference given to active participants of the Montgomery STEP program. While based on need, students must indicate by their involvement in school, church and community activities the ability and motivation to graduate from college. Students who receive a scholarship their freshman year of college may reapply for up to three additional years.

Application Requirements: High School Transcript, Essay and References

Deadline: March 1

### **Jackson Family Phoenix Fund Scholarship**

<https://cacfinfo.org/scholarships/jackson-family-phoenix-fund-scholarship/>

*Open to graduating seniors from any public Montgomery County high school or from any public Lowndes County high school*

Established for the benefit of graduates of any Montgomery County or Lowndes County public high school, this scholarship was designed to encourage students to pursue degrees in math or the physical, biological or agricultural sciences. Student must attend a Historically Black College or University (HCBU) and major in a non-healthcare science (biology, chemistry, physics, agronomy, horticulture, animal sciences, etc.). Applicant must have a minimum 3.0 GPA on a 4.0 scale, a minimum ACT score of 20 or a minimum SAT score of 1030. Criteria include academic performance, community activities and financial need. Applicants could be interviewed by the selection committee.

Application Requirements: High School Transcript and Essay

Deadline: March 1

### **Kiwanis Club of Montgomery Scholarship**

<https://cacfinfo.org/scholarships/kiwanis-club-montgomery-scholarship/>

*Open to graduating seniors from any Montgomery County high school*

This renewable scholarship is available to graduating high school seniors in Montgomery County who are planning to attend an accredited college or university. Students must indicate by their academic performance the ability and motivation to graduate from college. Preference is given to students demonstrating financial need. Consideration is also given to students' leadership, character, ability and participation in extracurricular

*Disclaimer: Scholarship types and award amounts are subject to change at any time at the discretion of the institution awarding the scholarship. Please confirm the details of the scholarship prior to applying.*

activities. Students who receive a scholarship their freshman year of college may annually reapply for up to three additional years.

Application Requirements: High School Transcript, Essay and References

Deadline: March 1

### **Jay Murphy Scholarship**

<https://cacfinfo.org/scholarships/jay-murphy-scholarship-2/>

*Open to graduating seniors from any Montgomery County high school*

This scholarship benefits individuals who have the desire to become teachers and relate well with young people. Applicants may be entering or continuing college, individuals who are in education and want to upgrade their skills or working individuals who wish to return to college to become teachers. Applicants must have a minimum 2.5 GPA on a 4.0 scale.

Application Requirements: Transcript, References, and Essay

Deadline: March 1

## **PIKE COUNTY**

### **Dr. James H. French Memorial Scholarship**

<https://cacfinfo.org/scholarships/dr-james-h-french-memorial-scholarship/>

*Open to graduating seniors from any Pike County high school*

Founded in 2007 by the estate of Dr. James French, this award benefits graduates of any Pike County high school and is based on academic achievement, school and community involvement, and financial need. In light of Dr. French's commitment to increasing student interest in science and math, preference will be given to students showing proficiency in accelerated math and science coursework. Applicants must have a minimum ACT score of 23 or SAT score of 1130 and a 3.5 GPA on a 4.0 scale. Scholarship awards range from \$1,000 to \$2,000.

Application Requirements: High School Transcript, Essay and References

Deadline: March 1



# SEARCH ENGINES AND SCHOLARSHIP PROGRAMS

## **American Indian College Fund**

<https://collegefund.org/>

Provides Native American students with scholarships and financial support for the nation's 33 accredited tribal colleges and universities.

## **Native Forward Scholars Fund**

<https://www.nativeforward.org/>

Throughout its 50-year history, Native Forward has empowered over 20,000 students from over 500 Tribes in all 50 states by providing scholarship dollars and support for services for undergraduate, graduate, and professional degrees.

## **Asian & Pacific Islander American Scholarship Fund**

<https://apiascholars.org/scholarship/apia-scholarship/>

The nation's largest non-profit organization devoted to providing college scholarships for Asian Americans and Pacific Islanders (AAPI).

## **Burger King Scholarship**

<https://burgerking.scholarsapply.org/>

## **Cappex**

<https://www.cappex.com/>

A free website where you can learn which colleges want you, before you apply and learn about more than \$11 billion in merit aid scholarships.

## **The College Board**

<https://www.collegeboard.org/>

## **BigFuture**

<https://bigfuture.collegeboard.org/pay-for-college/bigfuture-scholarships>

The program guides juniors and seniors through the college planning process and offers the chance to earn scholarships, from \$500 to \$40,000, for every action that students complete.

## **College Scholarships & Resources for Women**

<https://www.edumed.org/financial-aid/scholarships-resources-for-women/>

*Disclaimer: Scholarship types and award amounts are subject to change at any time at the discretion of the institution awarding the scholarship. Please confirm the details of the scholarship prior to applying.*

### **Davidson Institute Fellows Scholarship**

<https://www.davidsongifted.org/gifted-programs/fellows-scholarship/>

### **Dell Scholars Program**

<https://www.dellscholars.org/>

Recognizes academic potential and determination in students that have a definite need for financial assistance.

### **Diller Teen Awards (Jewish teen scholarship)**

<https://www.dillerteenawards.org/>

### **Elks National Foundation Scholarship Programs**

<https://www.elks.org/scholars/scholarships/mvs.cfm>

### **Fastweb**

<https://www.fastweb.com/>

Create a profile and let fastweb do the research on scholarships, internships colleges and more for you.

### **FinAid**

<https://finaid.org/>

### **Fulbright US Student Program**

<https://us.fulbrightonline.org/about/fulbright-us-student-program>

### **Gates Millennium Scholars**

<https://gmsp.org/>

Provides outstanding low income African American, American Indian/Alaska Native, Asian Pacific Islander American, and Hispanic American students with an opportunity to complete an undergraduate college education in any discipline they choose.

### **Going Merry**

<https://www.goingmerry.com/>

A free, one-stop scholarships platform. It matches you with scholarships and then helps you apply directly. It has both local and national scholarships and you can bulk-apply for multiple scholarships, which share similar essay prompts, using one application.

### **Goizueta Legacy Scholarship**

<https://www.goizuetafoundation.org/goizueta-legacy-scholarships/>

Provides scholarships for the children of Coca-Cola employees.

*Disclaimer: Scholarship types and award amounts are subject to change at any time at the discretion of the institution awarding the scholarship. Please confirm the details of the scholarship prior to applying.*

**Hispanic Heritage Youth Awards** (Latino youth scholarship)  
<https://hispanicheritage.org/programs/leadership/youth-awards/>

**Lamber Goodnow Education Scholarships**  
<https://lambergoodnow.com/scholarships/>

**Milton Fisher Scholarship**  
<https://mfscholarship.org/>

**Quest Bridge: National College Match**  
<https://www.questbridge.org/high-school-students/national-college-match/how-to-apply>

**“No Essay” College Scholarship**  
<https://www.niche.com/colleges/scholarships/no-essay-scholarship/>

**The NSHSS Foundation Scholarships**  
<https://nshssfoundation.org/>  
The NSHSS Foundation fosters the growth of students pursuing the STEAM (science, technology, engineering, arts, and math), business, economics, public policy, and environmental science and sustainability fields. Through special programs, including the NSHSS Honor Society, the NSHSS Foundation connects young scholars with additional opportunities to advance their education, personal growth and career interests.

**Peerlift**  
<https://www.peerlift.org/>  
Proven scholarships, internships, summer programs, and more gathered by fellow students like you. (Founded by a team of 2017 Coca-Cola Scholars!) Learn more about the creation of Peerlift.

**Personal Finance Analyst**  
<https://www.personalfinanceanalyst.com/find-scholarships/>

**Reagan Foundation Scholarships**  
<https://www.reaganfoundation.org/education/scholarship-programs/>  
Scholarship opportunities for outstanding student leaders.

**Rover Scholarship**  
<https://www.rover.com/college-scholarship/>

*Disclaimer: Scholarship types and award amounts are subject to change at any time at the discretion of the institution awarding the scholarship. Please confirm the details of the scholarship prior to applying.*

**Scholarships.com**

<https://www.scholarships.com/>

A free college scholarship search and financial aid information.

**Scholarship America**

<https://scholarshipamerica.org/>

Provides information and resources for your scholarship search.

**Taco Bell Live Más Scholarship**

<https://www.tacobellfoundation.org/live-mas-scholarship/>

**The “No Sweat” Scholarship**

<https://www.cirkledin.com/scholarships/>

**The Scholarship System**

[https://thescholarshipssystem.com/blog-for-students-families/the-ultimate-list-of-scholarships-for-women-and-girls/?sfns=mo&fbclid=IwARoLROtach3YJEh\\_R2nO98OkhVmUWHOGMdr6dcuzXU\\_IoJFEmSPlc2Cwgo](https://thescholarshipssystem.com/blog-for-students-families/the-ultimate-list-of-scholarships-for-women-and-girls/?sfns=mo&fbclid=IwARoLROtach3YJEh_R2nO98OkhVmUWHOGMdr6dcuzXU_IoJFEmSPlc2Cwgo)

**Thurgood Marshall College Fund**

<https://www.tmcf.org/>

Provides scholarships, programmatic and capacity building support to the 47 public Historically Black Colleges and Universities (HBCUs).

**TYLENOL® Future Care Scholarship**

<https://www.tylenol.com/news/scholarship>

**UNCF**

<https://uncf.org/>

Awards 10,000 students each year through 400 scholarship and internship programs so that students from low- and moderate-income families can afford college tuition, books and room and board.

**UNUNIGOCF**

<https://www.unigo.com/scholarships/our-scholarships>

**United Negro College Fund Scholarships**

<https://uncf.org/scholarships>

**U.S. News: A Guide to Scholarships for International Students**

<https://www.usnews.com/education/best-colleges/paying-for-college/>

*Disclaimer: Scholarship types and award amounts are subject to change at any time at the discretion of the institution awarding the scholarship. Please confirm the details of the scholarship prior to applying.*

# ROSEMONT GARDENS

*unique gifts & floral designs for every occasion*



**BOUQUETS · GOURMET GIFT BASKETS · BALLOON BOUQUETS  
SAME DAY FLORAL DELIVERY THROUGHOUT THE RIVER REGION**

**2210 ROSEMONT PLACE › (334) 834-7731**



# TODAY'S COLLEGE FOR TOMORROW'S WORLD

- ▶ Smaller Class Sizes
- ▶ 34 Programs of Study
- ▶ Affordable and Flexible Course Offerings
- ▶ Transferability to 4-year Colleges and Universities
- ▶ Short-term Certificate and Workforce Development Training Options

**(334) 420-4200**

**www.TrenholmState.edu**

#### ACCREDITATION

*H. Council Trenholm State Community College is accredited by the Southern Association of Colleges and Schools Commission on Colleges (SACSCOC) toward the associate degree. Degree-granting institutions also may offer credentials such as certificates and diplomas at approved degree levels. Questions about the accreditation of H. Council Trenholm State Community College may be directed in writing to the Southern Association of Colleges and Schools Commission on Colleges at 1866 Southern Lane, Decatur, GA 30033-4037, by calling (404) 679-4500, or by using information available on SACSCOC's website (www.sacscoc.org).*

#### EQUAL OPPORTUNITY IN EDUCATION AND EMPLOYMENT

It is the official policy of Trenholm State Community College that no employee or applicant for employment or promotion, shall be discriminated against on the basis of any impermissible criterion or characteristic including, without limitation, race, color, national origin, religion, marital status, disability, sex, age or any other protected class as defined by federal and state law.

Trenholm State Community College is also an Equal Opportunity Educator. It is the policy of this College that no student or other person because of age or race/color, national origin, sex, religion, disability, or the like shall be excluded or limited from participation in or be denied the benefits of any college program or activity.

#### TRENHOLM CAMPUS

**1225 Air Base Boulevard  
Montgomery, AL 36108**

#### PATTERSON SITE

**3920 Troy Highway  
Montgomery, AL 36116**



**Trenholm State**  
COMMUNITY COLLEGE

**PROTECT  
DEFEND  
SAVE**

Scan here or visit  
[GoCoastGuard.com](http://GoCoastGuard.com)  
to learn more.

 **UNITED STATES  
COAST GUARD**  
PROTECT / DEFEND / SAVE

**SP  
LC**

For employment,  
internship and  
externship  
opportunities

visit  
[splcenter.org/  
about/careers/jobs](http://splcenter.org/about/careers/jobs)

We believe our  
community shines  
a little brighter  
when we support  
one another.

*Set the bar higher.*

**JACKSON  
THORNTON**

Certified Public Accountants  
& Consultants

[jacksonthornton.com](http://jacksonthornton.com)



6836 Atlanta Highway  
Montgomery, AL 36117



334-277-8478



[www.cadencebank.com](http://www.cadencebank.com)





Thank you to Yaya's Balloons Party & More for providing the photobooth!



To book for your next event, contact Yolanda Walker at (334) 730-5276.

Visit them on social media at [YayasBalloons\\_PartyandMore](#)

**Thank you to 3 Squared Technology Group  
for providing food for the  
2023 College & Career Fair!**



*Disclaimer: Scholarship types and award amounts are subject to change at any time at the discretion of the institution awarding the scholarship. Please confirm the details of the scholarship prior to applying.*

Apply online at [www.alasu.edu](http://www.alasu.edu)

Alabama State University offers more than a degree, we offer life-altering experiences. From being the first state-supported educational institution for blacks, to being the capstone of the Civil Rights Movement, to now being the standard in innovation, leadership and excellence, this is the thread of our DNA. We are simply history makers who continue to develop history makers.

**Become Our  
Next Historymaker,  
Apply Today.**



**WHERE HISTORY IS MADE.**  
ALABAMA STATE UNIVERSITY

The logo for Alabama State University, featuring a stylized yellow and white illustration of a classical building with a dome and columns, positioned centrally between the main headline and the university name.

**ASU**

**ALABAMA STATE  
UNIVERSITY**

[www.alasu.edu](http://www.alasu.edu)

Office of Admissions | 334-229-4291 | [admissions@alasu.edu](mailto:admissions@alasu.edu)

